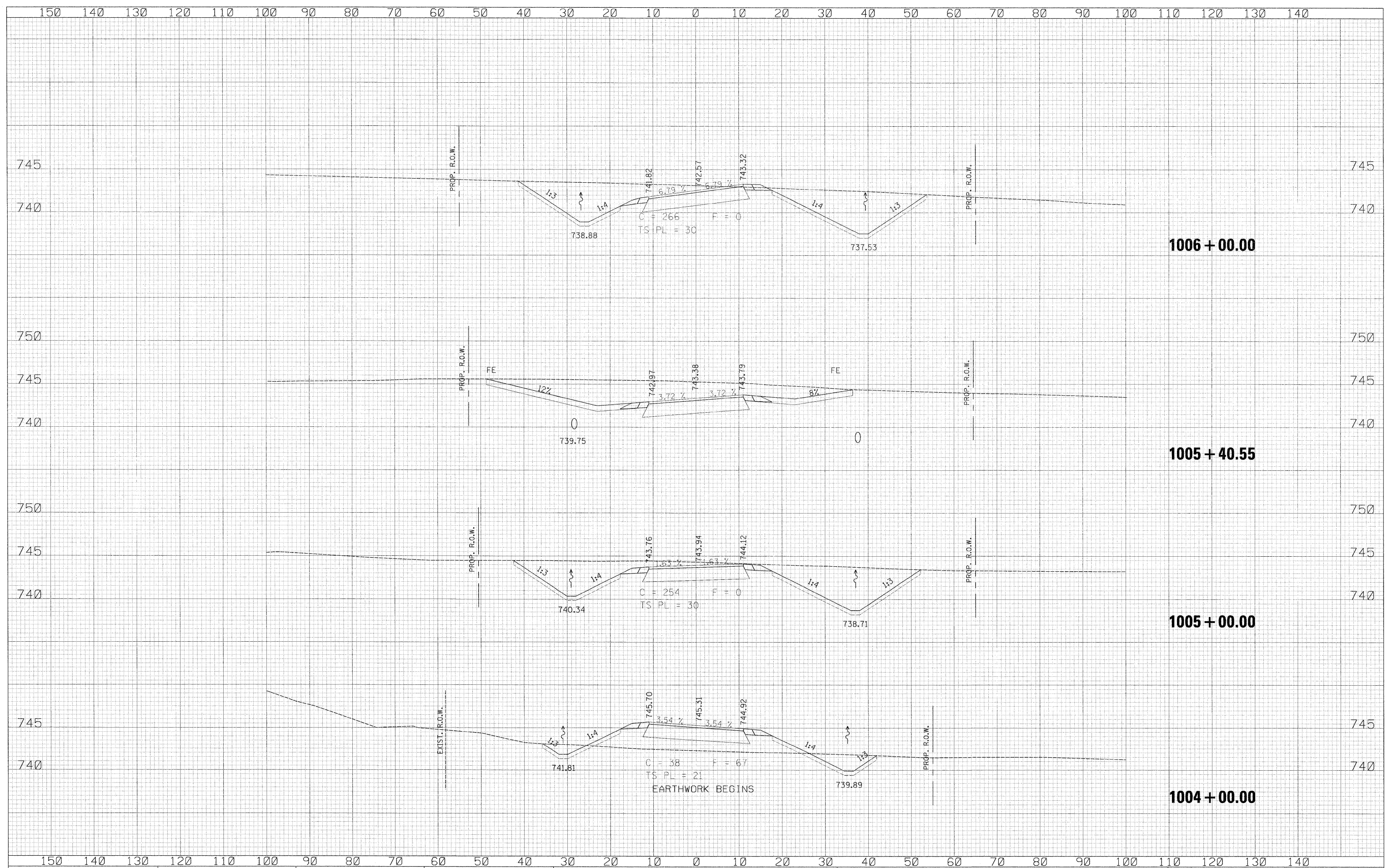


DATE	
BY	
DESIGNED	
PLOTTED	
TEMPLATE	
AREAS CHECKED	
FINAL SURVEY	
NOTE BOOK	
NO.	

DATE	
BY	
DESIGNED	
PLOTTED	
TEMPLATE	
AREAS CHECKED	
ORIGINAL SURVEY	
NOTE BOOK	
NO.	



USER NAME = zulkowad	DESIGNED RDT	REVISED -	STATE OF ILLINOIS DEPARTMENT OF TRANSPORTATION	FRONTAGE ROAD B1		F.A.P. RTE.	SECTION	COUNTY	TOTAL SHEETS	SHEET NO.
PLOT SCALE = 10.0000' / IN.	DRAWN RDT	REVISED -		CROSS SECTIONS		734	77-2-2 & 77-2B-1	WINNEBAGO	530	511
PLOT DATE = 2/2/2011	CHECKED GC	REVISED -		SCALE: H:V = 1:10		SHEET NO. 511 OF 530 SHEETS		CONTRACT NO. 64813		ILLINOIS FED. AID PROJECT
	DATE 01-14-11	REVISED -	STA. 1004+00.00 TO STA. 1006+00.00							

\\projects\11254\segment 1\sheet\civil\section\0264813\sheet\ssht-FR-31.dgn