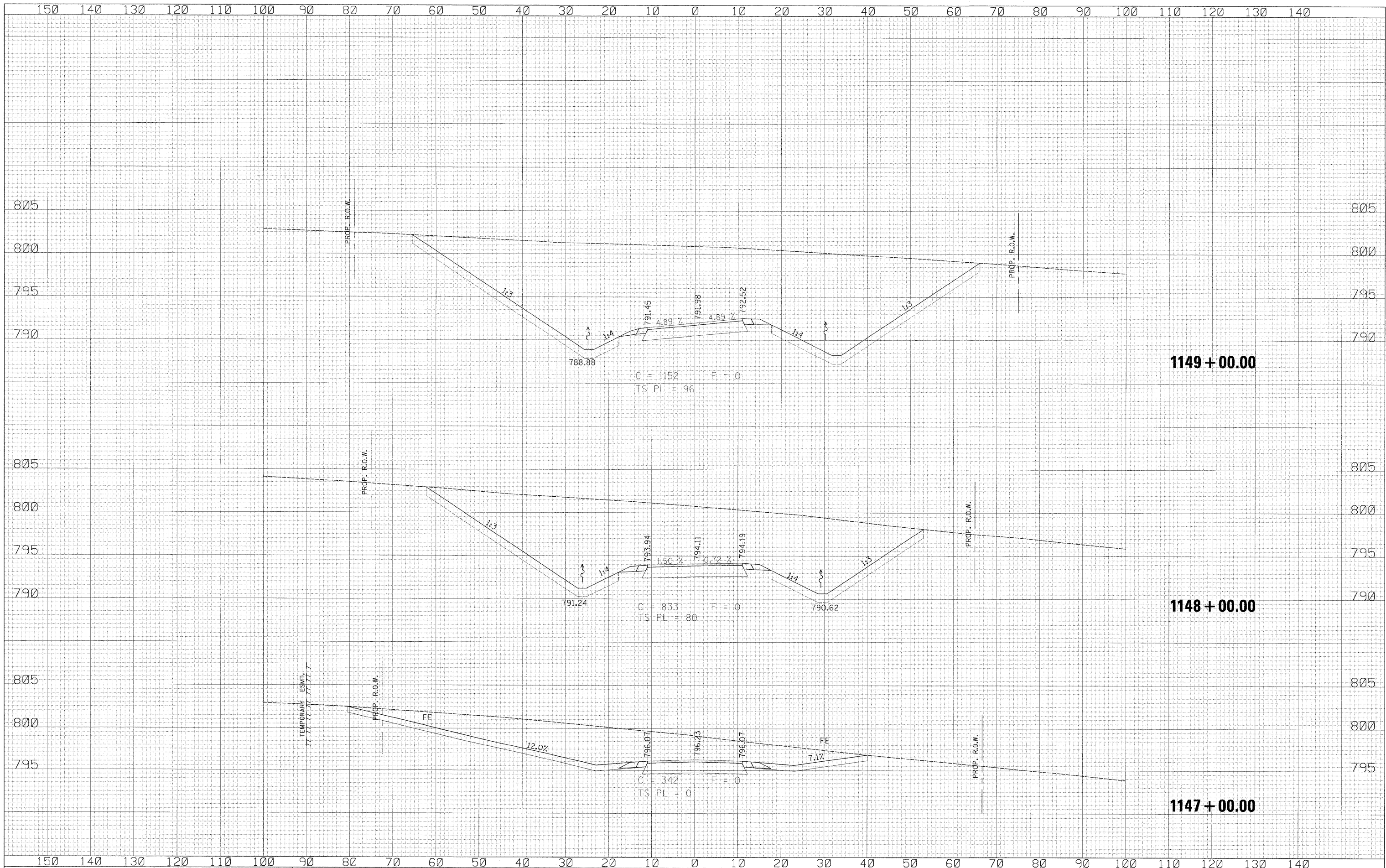


DATE	
BY	
FINAL SURVEY	
SUPERVISED	
NOTED	
NOTE BOOK	
TEMP. AREAS CHECKED	
NO.	

DATE	
BY	
ORIGINAL SURVEY	
SUPERVISED	
NOTED	
NOTE BOOK	
TEMP. AREAS CHECKED	
NO.	



150	140	130	120	110	100	90	80	70	60	50	40	30	20	10	0	10	20	30	40	50	60	70	80	90	100	110	120	130	140																														
USER NAME = zulkwed DESIGNED RDT DRAWN RDT CHECKED GC DATE 01-14-11														REVISIONS REVISED - REVISED - REVISED - REVISED -														STATE OF ILLINOIS DEPARTMENT OF TRANSPORTATION										FRONTAGE ROAD D CROSS SECTIONS										F.A.P. RTE. 734		SECTION 77-2-2 & 77-2B-1		COUNTY WINNEBAGO		TOTAL SHEETS 530		SHEET NO. 524		CONTRACT NO. 64813	
PLOT SCALE = 10.0000' / IN. PLOT DATE = 2/2/2011														SCALE: 1/4" = 10' SHEET NO. 524 OF 530 SHEETS														STA. 1147+00.00 TO STA. 1149+00.00										ILLINOIS FED. AID PROJECT																					

\\projects\11254\segment 1\sheet\civil\section\0264813-shr-ssht-FR-D.dgn