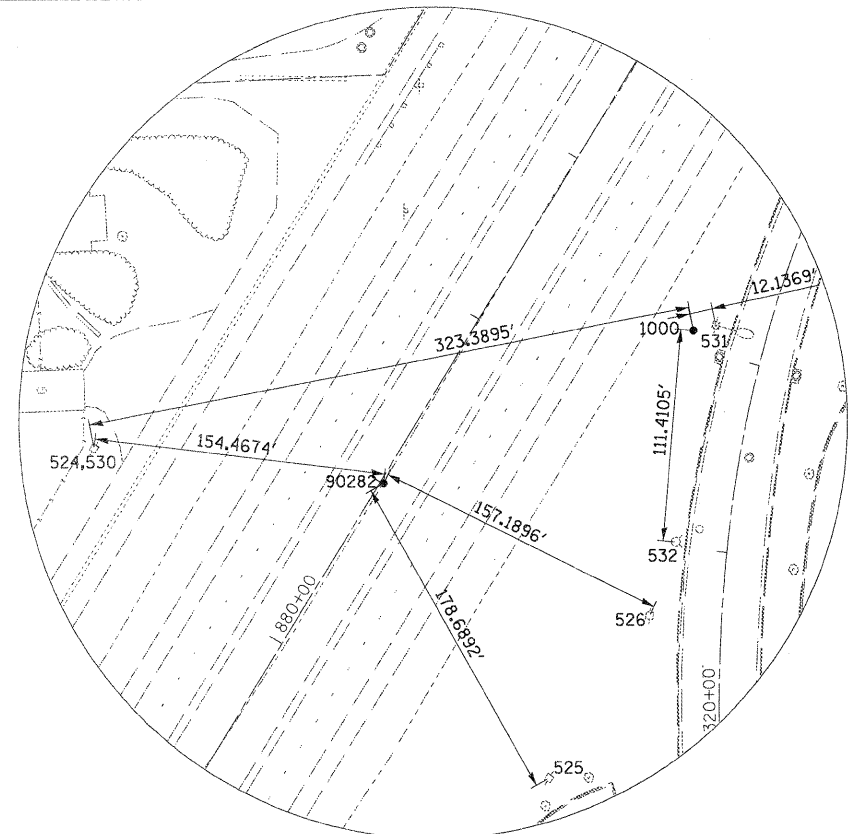
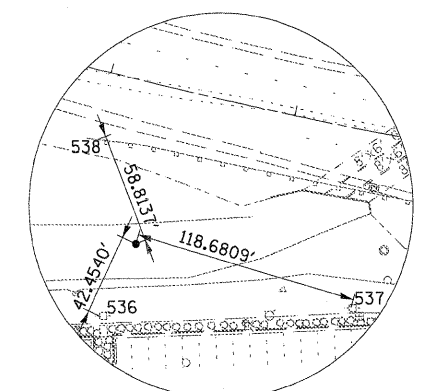


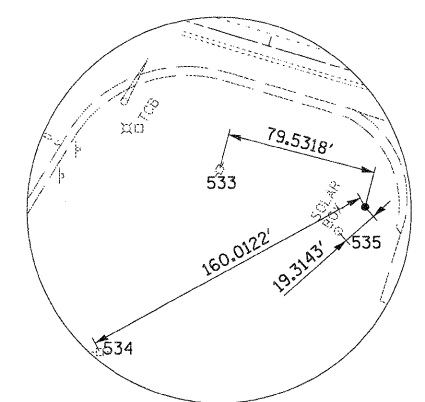
HORIZONTAL CONTROL POINT NO. 9401



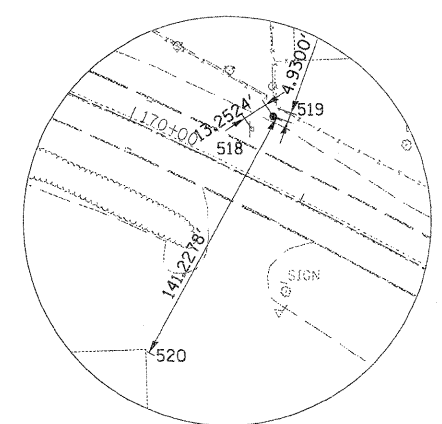
HORIZONTAL CONTROL POINT NO. 90282, 1000



HORIZONTAL CONTROL POINT NO. 9408



HORIZONTAL CONTROL POINT NO. 1001



HORIZONTAL CONTROL POINT NO. 9402

REFERENCE TIES

POINT	CHAIN	STATION	OFFSET	DESCRIPTION
515	LATHAMRD	134+33.2992	31.2202' RT	POWER POLE, SIGN POLE
516	LATHAMRD	159+05.7778	40.5765' RT	SIGN POLE, POWER POLE
517	LATHAMRD	159+46.5304	39.8934' RT	POWER POLE, R.O.W. MARKER
518	LATHAMRD	170+60.3897	23.1993' LT	R.O.W. MARKER, SIGN POLE
519	LATHAMRD	170+66.7898	39.2508' LT	SIGN POLE, FENCE CORNER
520	LATHAMRD	170+60.8205	106.7354' RT	FENCE CORNER, COMMERCIAL BUILDING
524	IL251	880+35.9846	138.5958' LT	GUARDRAIL STEEL PLATE BEAM, POWER POLE
525	IL251	880+13.0720	157.8178' RT	POWER POLE
526	IL251	881+13.9667	158.4474' RT	POWER POLE
530	IL251	880+35.9986	138.5938' LT	POWER POLE
531	IL251	882+62.5985	108.8490' RT	POWER POLE, STREET LIGHT POLE
532	IL251	881+54.5184	149.9405' RT	STREET LIGHT POLE, FIRE HYDRANT
533	IL173	3+93.4253	69.4792' RT	FIRE HYDRANT, POWER POLE WITH TRANSFORMER
534	IL173	3+59.8795	180.0048' RT	POWER POLE WITH TRANSFORMER
535	IL173	4+62.8963	83.2606' RT	POWER POLE, TRAFFIC SIGNAL CONTROLLER
536	IL173	8+26.0240	126.1218' RT	TRAFFIC CONTROLLER, POWERPOLE W/TRANSFORMER
537	IL173	9+47.6756	94.0985' RT	POWER POLE WITH TRANSFORMER
538	IL173	8+00.9842	36.2353' RT	POWER POLE, GUARDPOST

SURVEY WORK POINTS

POINT	NORTH	EAST	ELEVATION	CHAIN	STATION	OFFSET	DESCRIPTION
1070	2078635.0090	2601290.7510	737.1510	LATHAMRD	173+02.6090	20.7941' LT	PI, GPS CONTROL POINT
1071	2078904.4600	2600450.8720	741.0340	LATHAMRD	164+14.7676	27.5009' RT	GPS CONTROL POINT
1083	2078216.0830	2602083.3880	730.7390	LATHAMRD	181+97.3629	77.2545' LT	TOPO SURVEY POINT, GPS CONTROL POINT
1073	2077894.2670	2603231.7830	733.4700	IL173	11+93.9950	130.0488' LT	GPS CONTROL POINT, TOPO SURVEY POINT
1074	2077816.3520	2604088.5900	735.6830	IL173	20+63.0977	37.2588' LT	TOPO SURVEY POINT, GPS CONTROL POINT
1075	2077779.8950	2604908.1900	737.3500	IL173	28+80.9849	27.0359' RT	GPS CONTROL POINT
1076	2077909.2360	2605928.7140	751.9080	IL173	39+05.3156	67.5419' LT	GPS CONTROL POINT
1079	2077901.2850	2603881.2040	733.8530	IL173	18+58.7185	129.1920' LT	GPS CONTROL POINT

FILE NAME = D264987-shr-hvc-02.dgn

USER NAME = 3292090971  
 PLOT SCALE = 400.0000' / IN.  
 PLOT DATE = 1/18/2011

DESIGNED - LOM  
 DRAWN - MD  
 CHECKED - PDK  
 DATE - 01-19-2011

REVISED -  
 REVISED -  
 REVISED -  
 REVISED -

STATE OF ILLINOIS  
 DEPARTMENT OF TRANSPORTATION

EXISTING HORIZONTAL AND VERTICAL CONTROL

SCALE: SHEET NO. OF SHEETS STA. TO STA.

F.A.P. RTE.	SECTION	COUNTY	TOTAL SHEETS	SHEET NO.
303	129K-1	WINNEBAGO	401	51
CONTRACT NO. 64987				

FED. ROAD DIST. NO. 2 ILLINOIS FED. AID PROJECT