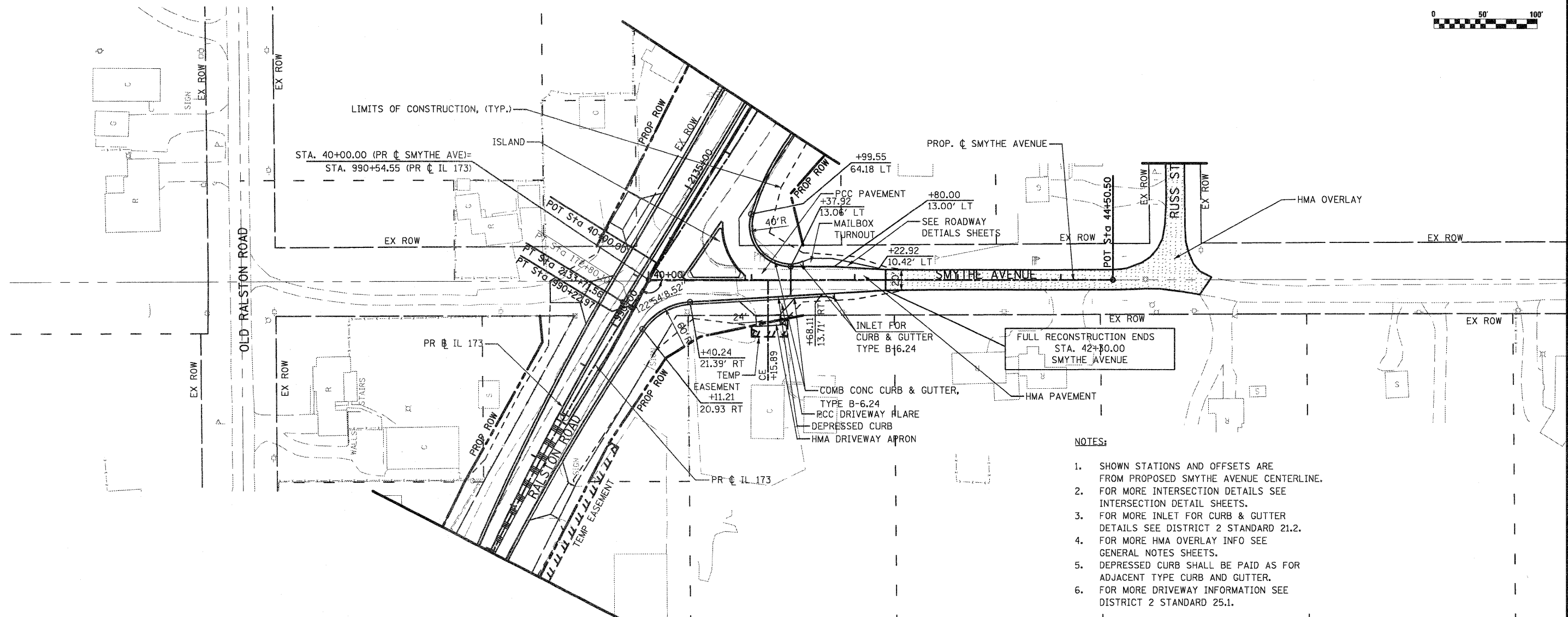
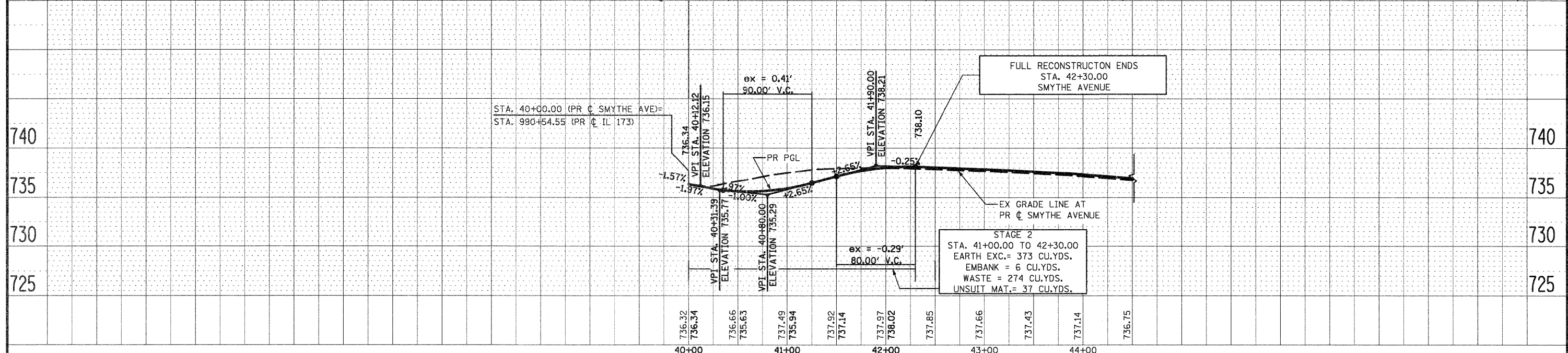


PLAN	SURVISED	DATE
	BY	
NOTE BOOK NO.	PLOTTED	
	CHECKED	
	BY	
	FILE NAME	

PROFILE	SURVISED	DATE
	BY	
NOTE BOOK NO.	PLOTTED	
	CHECKED	
	BY	
	FILE NAME	



- NOTES:**
1. SHOWN STATIONS AND OFFSETS ARE FROM PROPOSED SMYTHE AVENUE CENTERLINE.
  2. FOR MORE INTERSECTION DETAILS SEE INTERSECTION DETAIL SHEETS.
  3. FOR MORE INLET FOR CURB & GUTTER DETAILS SEE DISTRICT 2 STANDARD 21.2.
  4. FOR MORE HMA OVERLAY INFO SEE GENERAL NOTES SHEETS.
  5. DEPRESSED CURB SHALL BE PAID AS FOR ADJACENT TYPE CURB AND GUTTER.
  6. FOR MORE DRIVEWAY INFORMATION SEE DISTRICT 2 STANDARD 25.1.



FILE NAME = 0264987-ahtr:plnprf-05.dgn	USER NAME = 32028971	DESIGNED - LOM	REVISED -	<p align="center"><b>STATE OF ILLINOIS</b> <b>DEPARTMENT OF TRANSPORTATION</b></p>	<p align="center"><b>PLAN AND PROFILE</b> <b>SMYTHE AVENUE</b></p>	F.A.P. RTE. 303	SECTION 129K-1	COUNTY WINNEBAGO	TOTAL SHEETS 401	SHEET NO. 65		
	PLOT SCALE = 1/8" = 100.0000' / IN.	DRAWN - MG	REVISED -			SCALE:	SHEET NO. OF SHEETS	STA. 40+00.00 TO STA. 42+30.00	FED. ROAD DIST. NO. 2 ILLINOIS FED. AID PROJECT			
	PLOT DATE = 1/18/2011	CHECKED - PDK	REVISED -						CONTRACT NO. 64987			
		DATE - 01-19-2011	REVISED -									