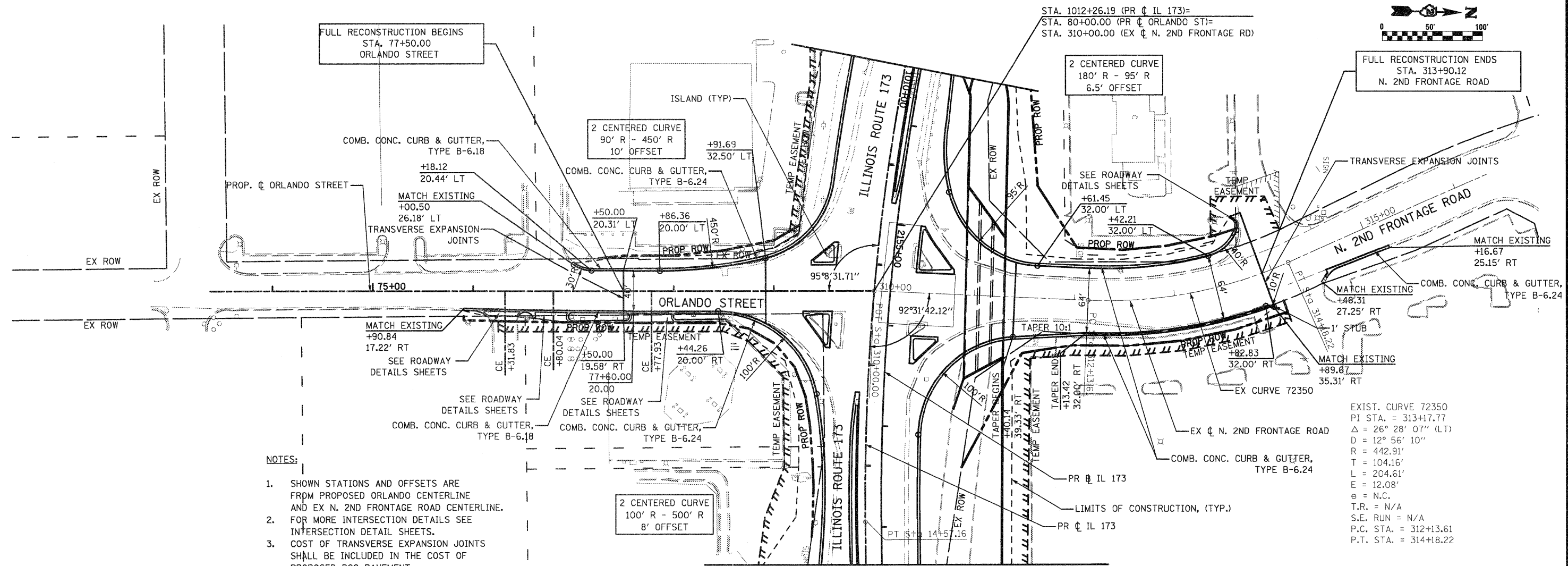
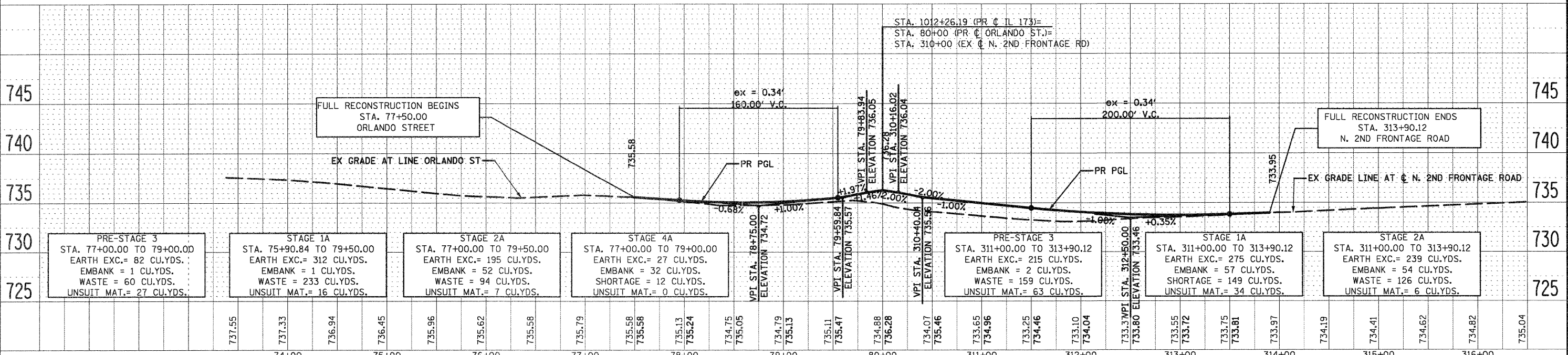


PLAN	SURVEYED	BY	DATE
	PLOTTED		
	NOTED		
	FILED		
	NO. OF WAY CHECKED		
	PAID FILE NAME		

PROFILE	SEWERED	BY	DATE
	PLOTTED		
	CHECKED		
	STRUCTURE		
	NOTATIONS		
	CHKD		



- NOTES:**
1. SHOWN STATIONS AND OFFSETS ARE FROM PROPOSED ORLANDO CENTERLINE AND EX N. 2ND FRONTAGE ROAD CENTERLINE.
 2. FOR MORE INTERSECTION DETAILS SEE INTERSECTION DETAIL SHEETS.
 3. COST OF TRANSVERSE EXPANSION JOINTS SHALL BE INCLUDED IN THE COST OF PROPOSED PCC PAVEMENT.
 4. FOR MORE DRIVEWAY INFORMATION SEE DISTRICT 2 STANDARD 25.1.



FILE NAME = 0264987-shr-plnprf-10.dgn	USER NAME = 329209871	DESIGNED - LOM	REVISED -	STATE OF ILLINOIS DEPARTMENT OF TRANSPORTATION	PLAN AND PROFILE ORLANDO STREET \ N 2ND FRONTAGE ROAD			F.A.P. RTE. = 303	SECTION = 129K-1	COUNTY = WINNEBAGO	TOTAL SHEETS = 401	SHEET NO. = 70
	PLOT SCALE = 100.0000' / IN.	DRAWN - MG	REVISED -		SCALE:	SHEET NO. OF SHEETS	STA. 77+50.00 TO STA. 313+90.00	FED. ROAD DIST. NO. 2 ILLINOIS FED. AID PROJECT				
	PLOT DATE = 1/18/2011	CHECKED - PDK	REVISED -					CONTRACT NO. 64987				
		DATE - 01-19-2011	REVISED -									