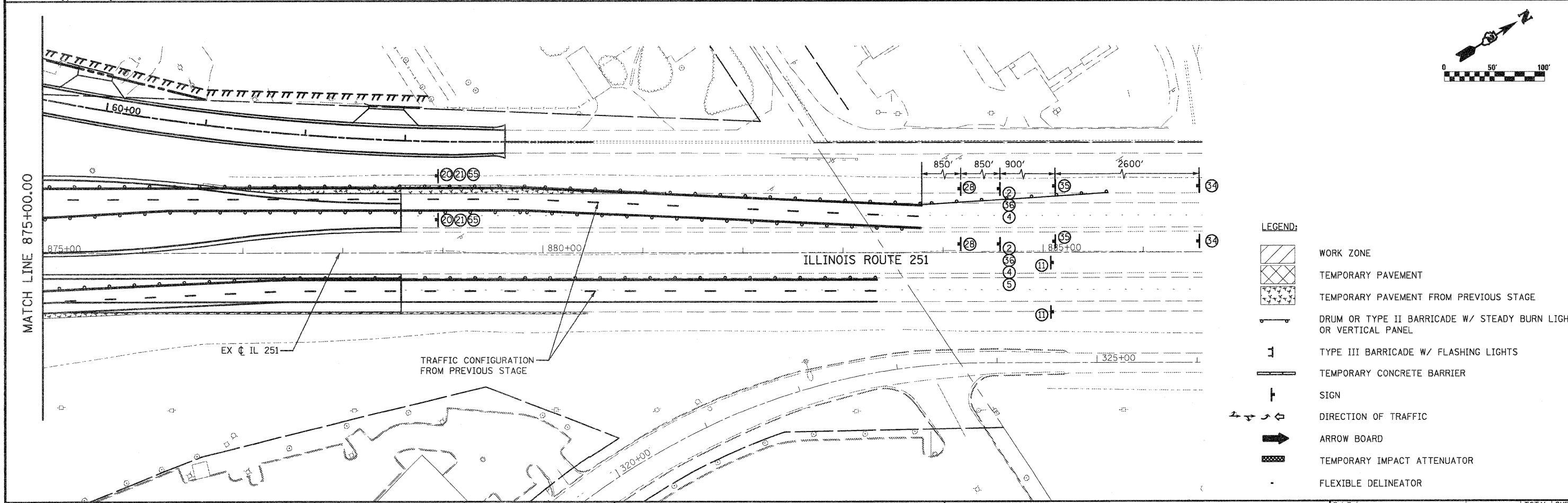


MATCH LINE 868+00.00



- LEGEND:**
- WORK ZONE
 - TEMPORARY PAVEMENT
 - TEMPORARY PAVEMENT FROM PREVIOUS STAGE
 - DRUM OR TYPE II BARRICADE W/ STEADY BURN LIGHT OR VERTICAL PANEL
 - TYPE III BARRICADE W/ FLASHING LIGHTS
 - TEMPORARY CONCRETE BARRIER
 - SIGN
 - DIRECTION OF TRAFFIC
 - ARROW BOARD
 - TEMPORARY IMPACT ATTENUATOR
 - FLEXIBLE DELINEATOR

FILE NAME = D264987-sh-t-staging-305.dgn

USER NAME = 3202090971
 PLOT SCALE = 100.0000' / IN.
 PLOT DATE = 1/19/2011

DESIGNED - LOM
 DRAWN - MD
 CHECKED - PDK
 DATE - 01-19-2011

REVISED -
 REVISED -
 REVISED -
 REVISED -

**STATE OF ILLINOIS
 DEPARTMENT OF TRANSPORTATION**

**STAGING AND TRAFFIC CONTROL PLAN
 STAGE 3
 ILLINOIS ROUTE 251**

SCALE: SHEET NO. OF SHEETS STA. 840+00.00 TO STA. 868+00.00

F.A.P. RTE.	SECTION	COUNTY	TOTAL SHEETS	SHEET NO.
303	129K-1	WINNEBAGO	401	138
CONTRACT NO. 64987				
FED. ROAD DIST. NO. 2 ILLINOIS FED. AID PROJECT				