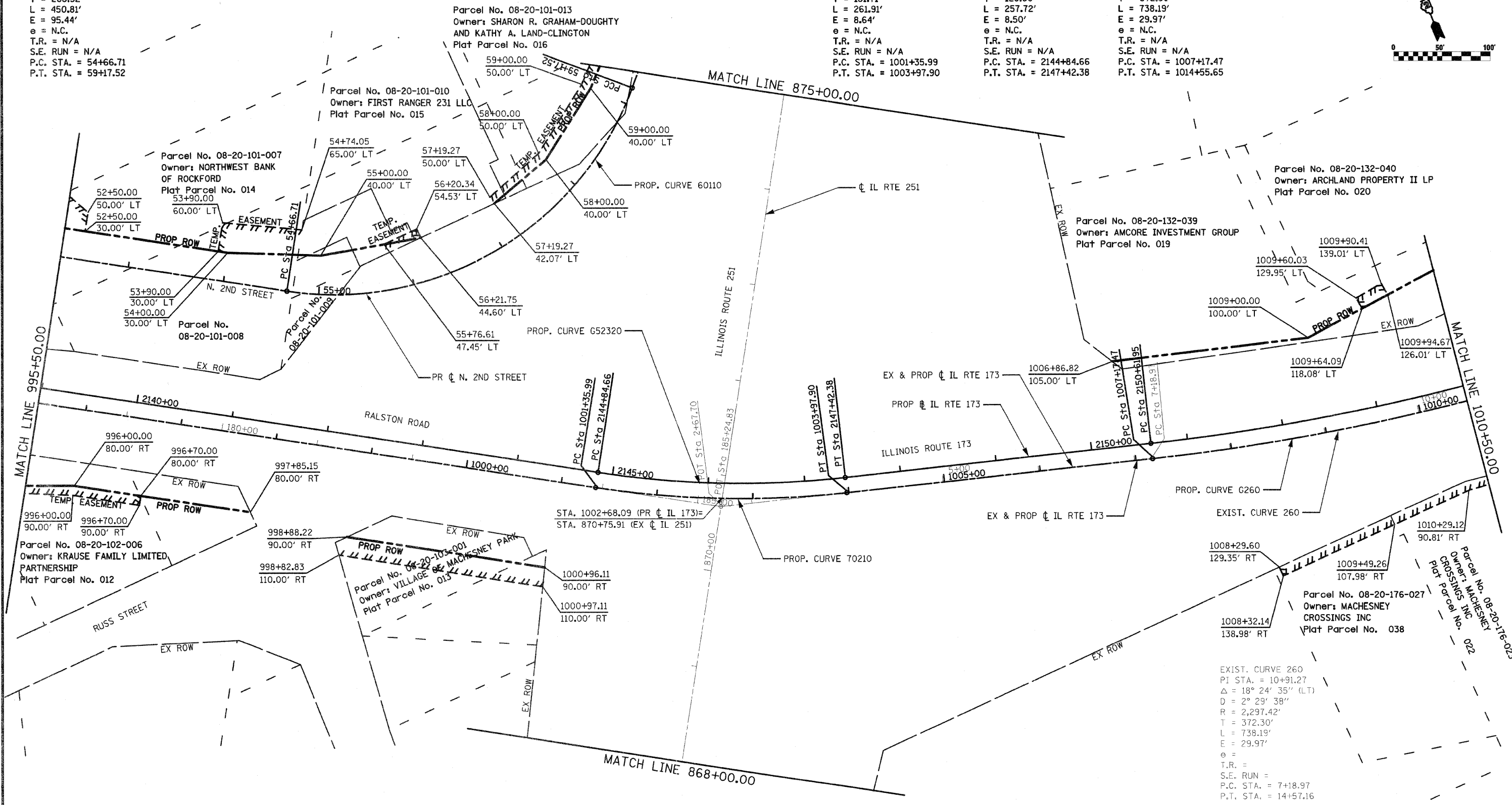
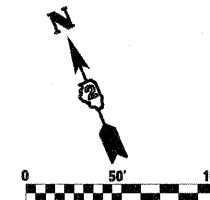


PROP. CURVE 60110  
 PI STA. = 57+35.23  
 $\Delta = 78^\circ 16' 14''$  (LT)  
 $D = 17^\circ 21' 44''$   
 $R = 330.00'$   
 $T = 268.52'$   
 $L = 450.81'$   
 $E = 95.44'$   
 $e = N.C.$   
 $T.R. = N/A$   
 $S.E. RUN = N/A$   
 $P.C. STA. = 54+66.71$   
 $P.T. STA. = 59+17.52$

PROP. CURVE 70210  
 PI STA. = 1002+67.70  
 $\Delta = 15^\circ 00' 23''$  (LT)  
 $D = 5^\circ 43' 46''$   
 $R = 1,000.00'$   
 $T = 131.71'$   
 $L = 261.91'$   
 $E = 8.64'$   
 $e = N.C.$   
 $T.R. = N/A$   
 $S.E. RUN = N/A$   
 $P.C. STA. = 1001+35.99$   
 $P.T. STA. = 1003+97.90$

PROP. CURVE G52320  
 PI STA. = 2146+14.26  
 $\Delta = 15^\circ 00' 23''$  (LT)  
 $D = 5^\circ 49' 22''$   
 $R = 984.00'$   
 $T = 129.60'$   
 $L = 257.72'$   
 $E = 8.50'$   
 $e = N.C.$   
 $T.R. = N/A$   
 $S.E. RUN = N/A$   
 $P.C. STA. = 2144+84.66$   
 $P.T. STA. = 2147+42.38$

PROP. CURVE G260  
 PI STA. = 1010+89.77  
 $\Delta = 18^\circ 24' 35''$  (LT)  
 $D = 2^\circ 29' 38''$   
 $R = 2,297.42'$   
 $T = 372.30'$   
 $L = 738.19'$   
 $E = 29.97'$   
 $e = N.C.$   
 $T.R. = N/A$   
 $S.E. RUN = N/A$   
 $P.C. STA. = 1007+17.47$   
 $P.T. STA. = 1014+55.65$



EXIST. CURVE 260  
 PI STA. = 10+91.27  
 $\Delta = 18^\circ 24' 35''$  (LT)  
 $D = 2^\circ 29' 38''$   
 $R = 2,297.42'$   
 $T = 372.30'$   
 $L = 738.19'$   
 $E = 29.97'$   
 $e =$   
 $T.R. =$   
 $S.E. RUN =$   
 $P.C. STA. = 7+18.97$   
 $P.T. STA. = 14+57.16$

FILE NAME = 0264987-shr-row-02.dgn	USER NAME = 3202090971	DESIGNED - LOM	REVISIONS	<b>STATE OF ILLINOIS DEPARTMENT OF TRANSPORTATION</b>	<b>RIGHT OF WAY PLAN RALSTON ROAD \ ILLINOIS ROUTE 173</b>			F.A.P. RTE. 303	SECTION 129K-1	COUNTY WINNEBAGO	TOTAL SHEETS 401	SHEET NO. 226
PLOT SCALE = 1/8" = 100'-0"	PLOT DATE = 3/16/2011	DRAWN - MD	REVISIONS		SCALE:	SHEET NO. OF SHEETS	STA. 995+50.00 TO STA. 1010+50.00	FED. ROAD DIST. NO. 2	ILLINOIS FED. AID PROJECT	CONTRACT NO. 64987		
		CHECKED - PDK	REVISIONS									
		DATE - 03-16-2011	REVISIONS									