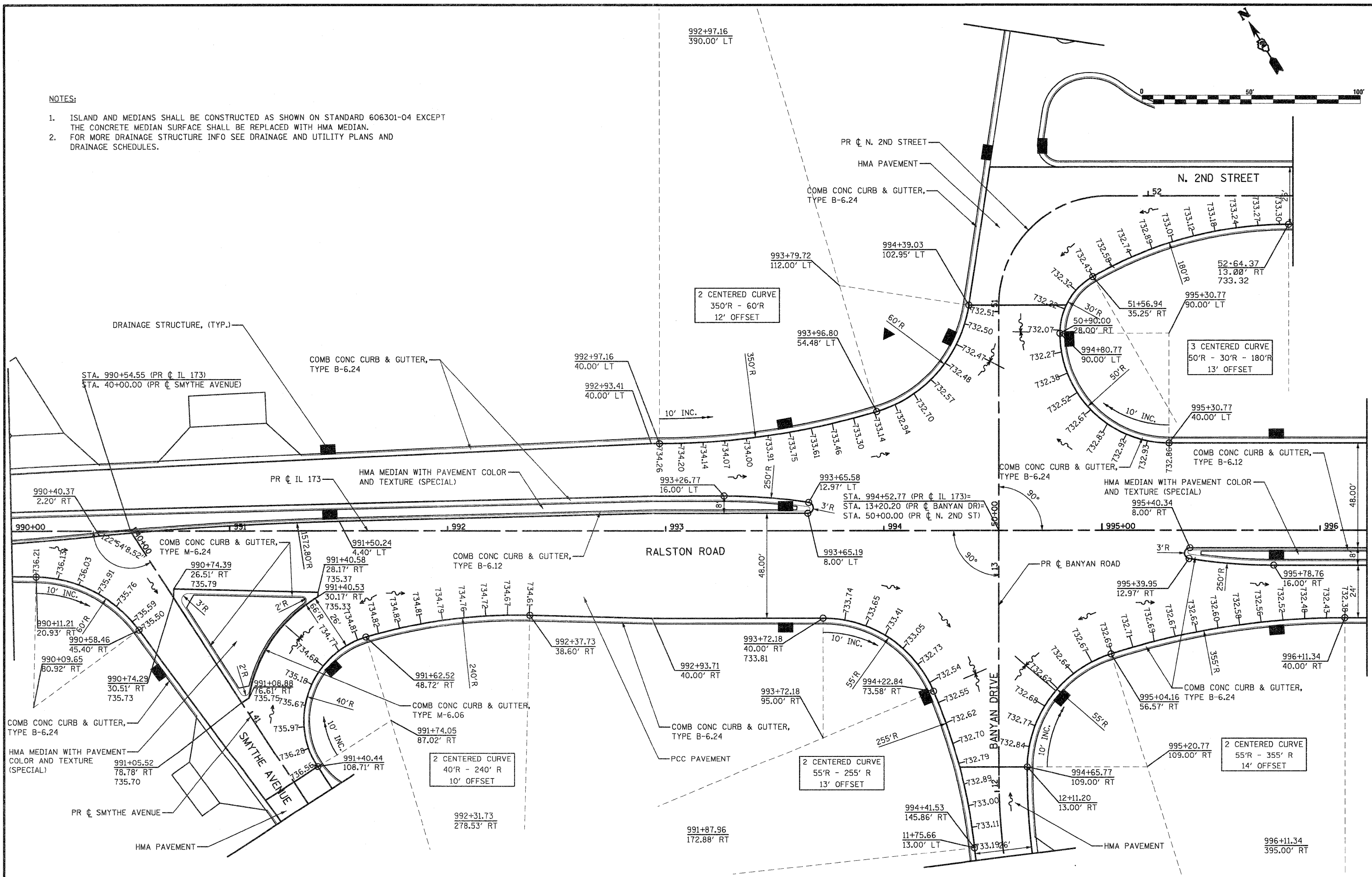


NOTES:

- ISLAND AND MEDIANS SHALL BE CONSTRUCTED AS SHOWN ON STANDARD 606301-04 EXCEPT THE CONCRETE MEDIAN SURFACE SHALL BE REPLACED WITH HMA MEDIAN.
- FOR MORE DRAINAGE STRUCTURE INFO SEE DRAINAGE AND UTILITY PLANS AND DRAINAGE SCHEDULES.

992+97.16
390.00' LT



FILE NAME = 0264987-shb-intersec-01.dgn
 USER NAME = 320209971
 PLOT SCALE = 40.0000' / IN.
 PLOT DATE = 1/18/2011

DESIGNED - LOW
 DRAWN - MD
 CHECKED - PDK
 DATE - 01-19-2011

REVISED -
 REVISED -
 REVISED -
 REVISED -

**STATE OF ILLINOIS
 DEPARTMENT OF TRANSPORTATION**

**INTERSECTION AND PAVEMENT ELEVATION DETAILS
 RALSTON ROAD & SMYTHE AVE / BANYAN DRIVE / N. 2ND STREET**

SCALE: SHEET NO. OF SHEETS STA. TO STA.

F.A.P. RTE. 303	SECTION 129K-1	COUNTY WINNEBAGO	TOTAL SHEETS 401	SHEET NO. 241
CONTRACT NO. 64987				
FED. ROAD DIST. NO. 2 ILLINOIS FED. AID PROJECT				