
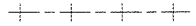
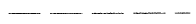
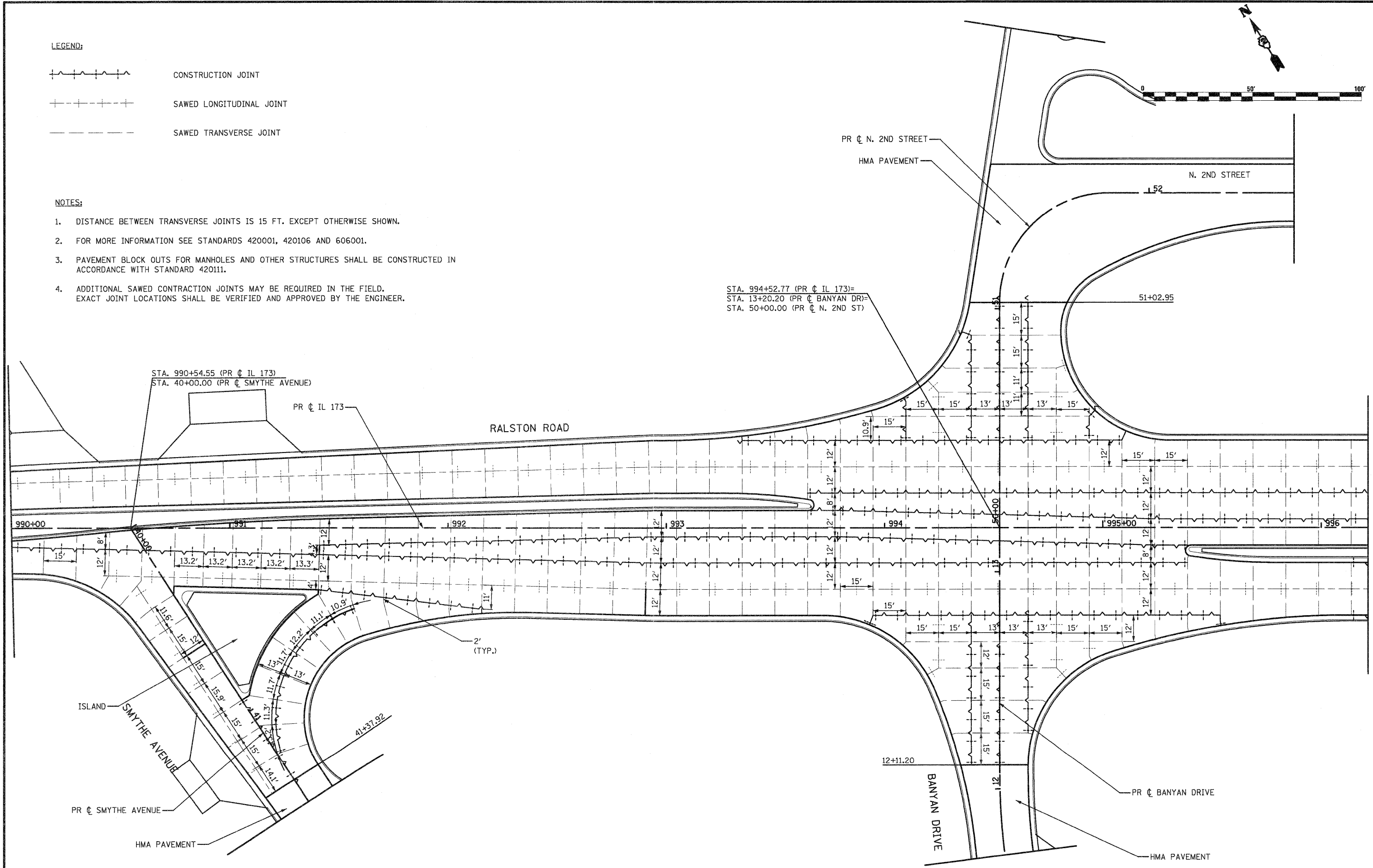
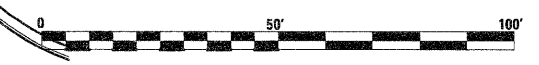
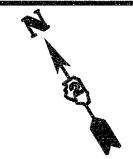


LEGEND:

-  CONSTRUCTION JOINT
-  SAWED LONGITUDINAL JOINT
-  SAWED TRANSVERSE JOINT

NOTES:

1. DISTANCE BETWEEN TRANSVERSE JOINTS IS 15 FT. EXCEPT OTHERWISE SHOWN.
2. FOR MORE INFORMATION SEE STANDARDS 420001, 420106 AND 606001.
3. PAVEMENT BLOCK OUTS FOR MANHOLES AND OTHER STRUCTURES SHALL BE CONSTRUCTED IN ACCORDANCE WITH STANDARD 420111.
4. ADDITIONAL SAWED CONTRACTION JOINTS MAY BE REQUIRED IN THE FIELD. EXACT JOINT LOCATIONS SHALL BE VERIFIED AND APPROVED BY THE ENGINEER.



FILE NAME = 0264987-shr-elev-01.dgn	USER NAME = 3282892971	DESIGNED - LOM	REVISED -	STATE OF ILLINOIS DEPARTMENT OF TRANSPORTATION	INTERSECTION JOINTING DETAILS RALSTON ROAD & SMYTHE AVE / BANYAN DRIVE / N. 2ND STREET			F.A.P. RTE. 303	SECTION 129K-1	COUNTY WINNEBAGO	TOTAL SHEETS 401	SHEET NO. 245
	PLOT SCALE = 48,0000' / IN.	DRAWN - MD	REVISED -					SCALE: SHEET NO. OF SHEETS STA. TO STA.			FED. ROAD DIST. NO. 2 ILLINOIS FED. AID PROJECT	
PLOT DATE = 1/18/2011	DATE = 01-19-2011	CHECKED - PDK	REVISED -				CONTRACT NO. 64987					