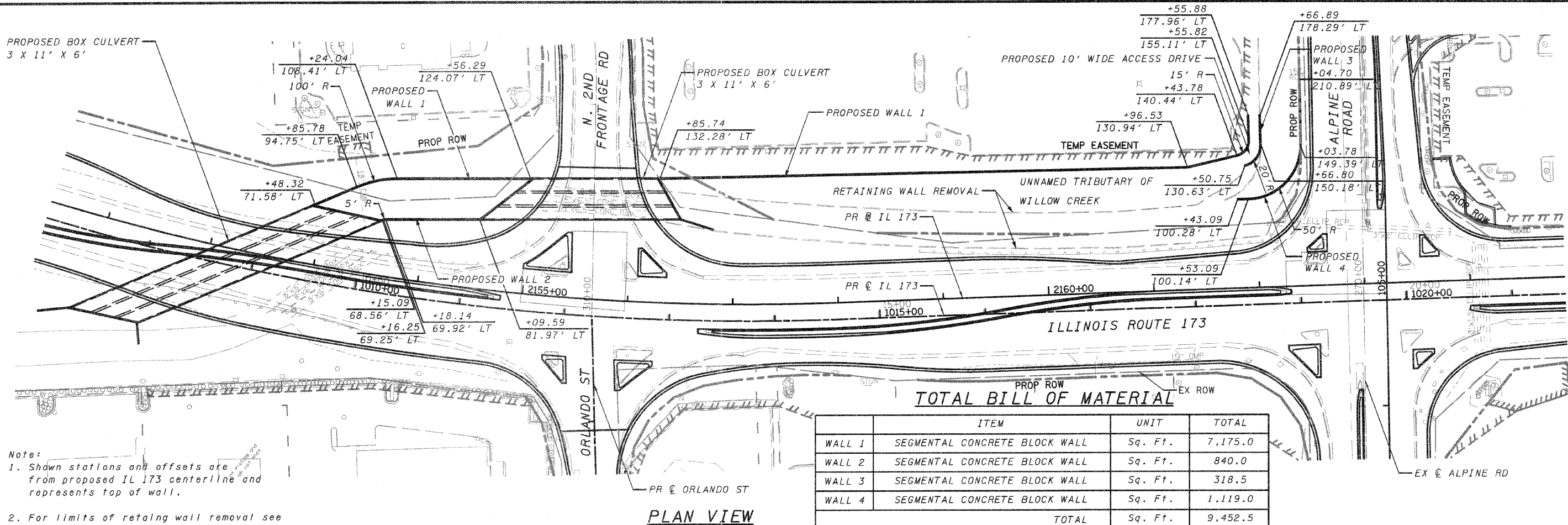


PROPOSED BOX CULVERT  
3 X 11' X 6'

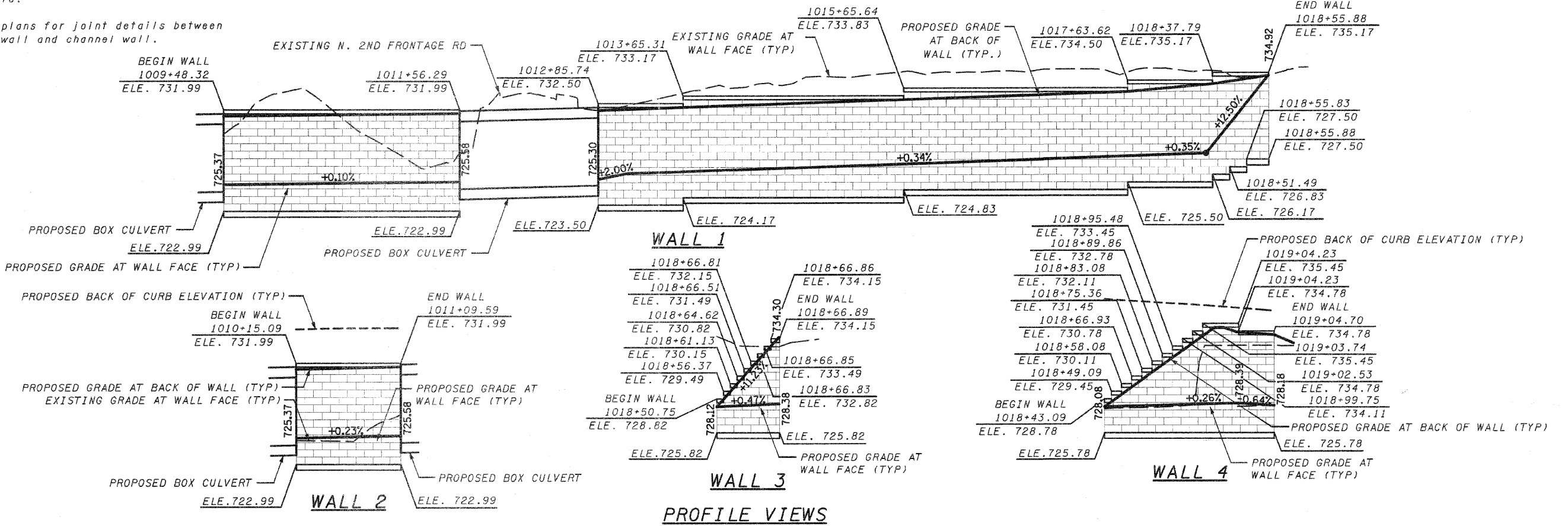


- Note:
1. Shown stations and offsets are from proposed IL 173 centerline and represents top of wall.
  2. For limits of retaining wall removal see removal sheets.
  3. See culvert plans for joint details between culvert headwall and channel wall.

**TOTAL BILL OF MATERIAL**

ITEM	UNIT	TOTAL
WALL 1 SEGMENTAL CONCRETE BLOCK WALL	Sq. Ft.	7,175.0
WALL 2 SEGMENTAL CONCRETE BLOCK WALL	Sq. Ft.	840.0
WALL 3 SEGMENTAL CONCRETE BLOCK WALL	Sq. Ft.	318.5
WALL 4 SEGMENTAL CONCRETE BLOCK WALL	Sq. Ft.	1,119.0
<b>TOTAL</b>	<b>Sq. Ft.</b>	<b>9,452.5</b>

**PLAN VIEW**



**PROFILE VIEWS**