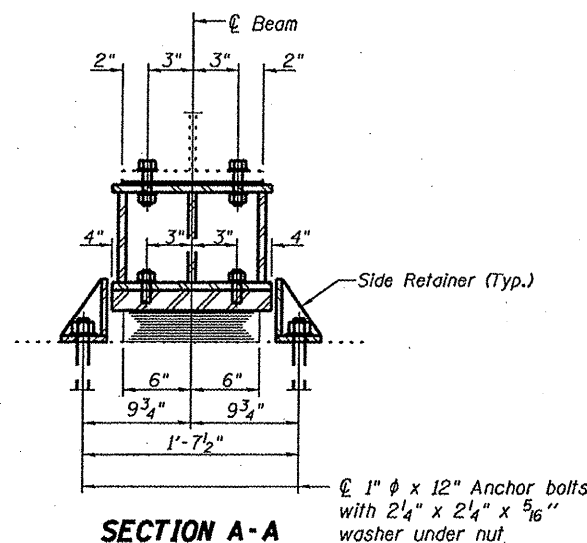


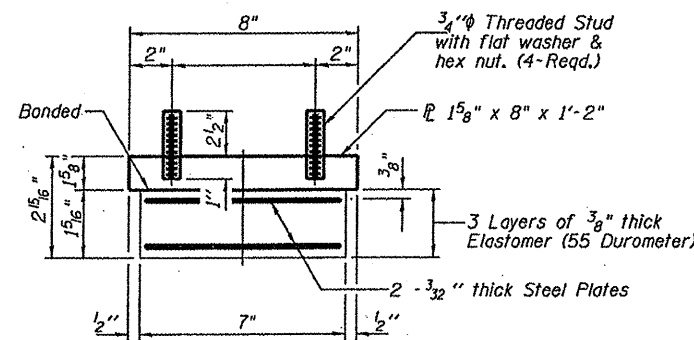
ELEVATION AT ABUTMENT



SECTION A-A

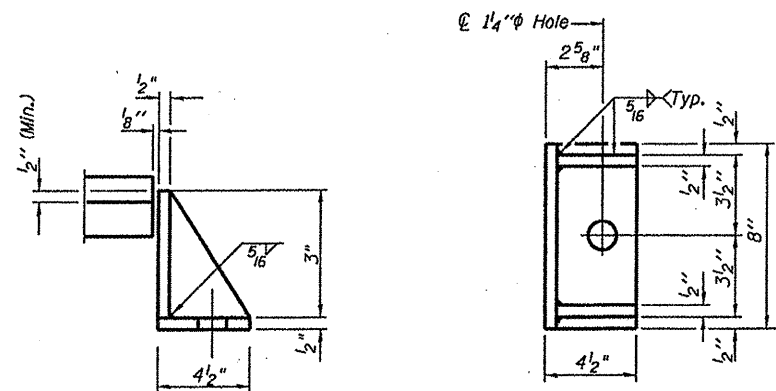
1" ϕ x 12" Anchor bolts with 2 1/4" x 2 1/4" x 5/16" washer under nut.

TYPE I ELASTOMERIC EXP. BRG.



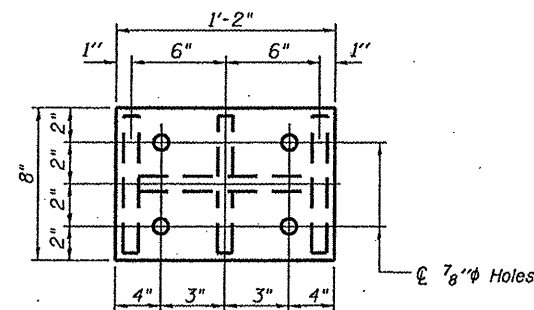
BEARING ASSEMBLY

Note: Shim plates shall not be placed under Bearing Assembly.

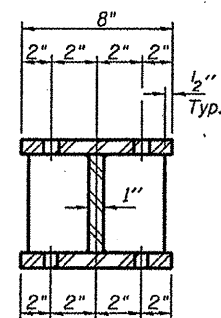


SIDE RETAINER

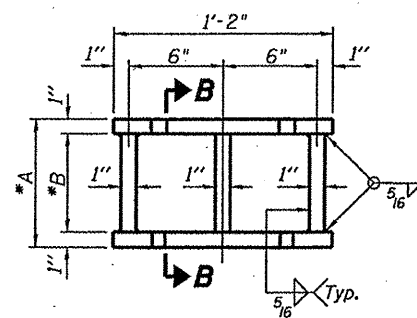
Equivalent rolled angle with stiffeners will be allowed in lieu of welded plates.



PLAN TOP AND BOTTOM PLATE



SECTION B-B



STEEL EXTENSION DETAIL

BEAM REACTIONS

RP	(K)	15.1
R ₁	(K)	32.4
Imp.	(K)	9.7
R (Total)	(K)	57.2

Notes:
 Diaphragm removal and reinstallation may be required to facilitate drilling holes. Cost included with Furnishing and Erecting Structural Steel.
 New steel extensions, shim plates and connection bolts are included with Furnishing and Erecting Structural Steel.
 Prior to ordering any material, the Contractor shall verify in the field all bearing height and shim thickness dimensions. Min. jack capacity = 30 Tons.
 Anchor bolts shall be ASTM F1554 all-thread (or an Engineer-approved alternate material) of the grade(s) and diameter(s) specified. ASTM A307 Grade C anchor bolts may be used in lieu of ASTM F1554 Grade 36 (Fy=36ksi). The corresponding specified grade of AASHTO M314 anchor bolts may be used in lieu of ASTM F1554.
 Anchor bolts at fixed bearings may be either cast in place or installed in holes drilled after the supported member is in place.
 Drilled and set anchor bolts shall be installed according to Article 521.06 of the Standard Specifications.
 Side retainers shall be included in the cost of Elastomeric Bearing Assembly, Type I.

SOUTH ABUTMENT			
BEAM NO.	"A" INCHES	"B" INCHES	SHIM PLATE THICKNESS-INCHES
1	10 3/4	8 3/4	1/4
2	10 3/4	8 3/4	0
3	10 3/4	8 3/4	1/4
4	10 3/4	8 3/4	1/8
5	10 3/4	8 3/4	1/4
6	11 1/8	9 1/8	1/8
7	11 1/8	9 1/8	1/8
8	11 1/8	9 1/8	1/8
9	11 1/8	9 1/8	1/2
10	11 1/8	9 1/8	1/8
11	11 1/8	9 1/8	1/2
12	11 1/8	9 1/8	0
13	11 1/8	9 1/8	1/8
14	11 1/8	9 1/8	1/8

BILL OF MATERIAL

Item	Unit	Total
Elastomeric Bearing Assembly, Type I	Each	14
Jack and Remove Existing Bearings	Each	14
Furnishing and Erecting Structural Steel	Pound	2110
Anchor Bolts 1" ϕ	Each	28

ELASTOMERIC BEARING ASSEMBLY, TYPE I
 IL RTE. 23 OVER OTTER CREEK
 FAP 68 (IL 23) SEC. (6B-1)
 LASALLE COUNTY
 STA. 142+08
 S.N. 050-0160

TYI/REPS 12-03-2008

FILE NAME =	USER NAME = potelyj	DESIGNED - RLW	REVISED -
ca:\pwork\pwork\potelyj\d0257398\0368	37-details.dgn	DRAWN - RLW	REVISED -
	PLOT SCALE = 100.0000' / 1"	CHECKED -	REVISED -
	PLOT DATE = 5/19/2011	DATE -	REVISED -

STATE OF ILLINOIS
 DEPARTMENT OF TRANSPORTATION

ELASTOMERIC BEARING ASSEMBLY, TYPE I
AT SOUTH ABUTMENT

SCALE: _____ SHEET NO. 8 OF 12 SHEETS STA. _____ TO STA. _____

F.A.P. RTE.	SECTION	COUNTY	TOTAL SHEETS	SHEET NO.
68	(6B-1)	LASALLE	20	16
			CONTRACT NO. 66937	
ILLINOIS FED. AID PROJECT				