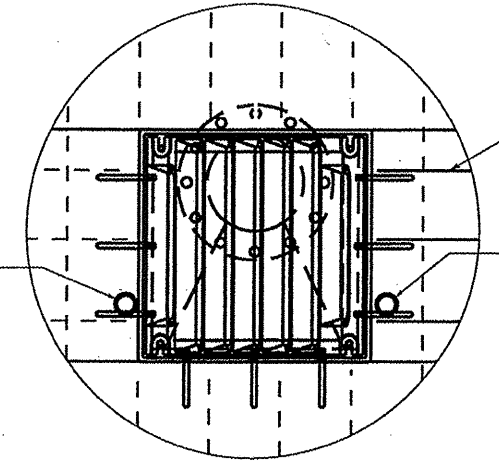


LIMIT OF REMOVAL SHALL BE SCORE CUT 3/4" IN DEPTH MAX. ALL EXISTING REINFORCEMENT BARS ARE TO REMAIN IN PLACE. EXISTING REINFORCEMENT BARS SHALL ONLY BE CUT AS NECESSARY TO INSTALL THE PROPOSED SCUPPERS AS DETAILED.

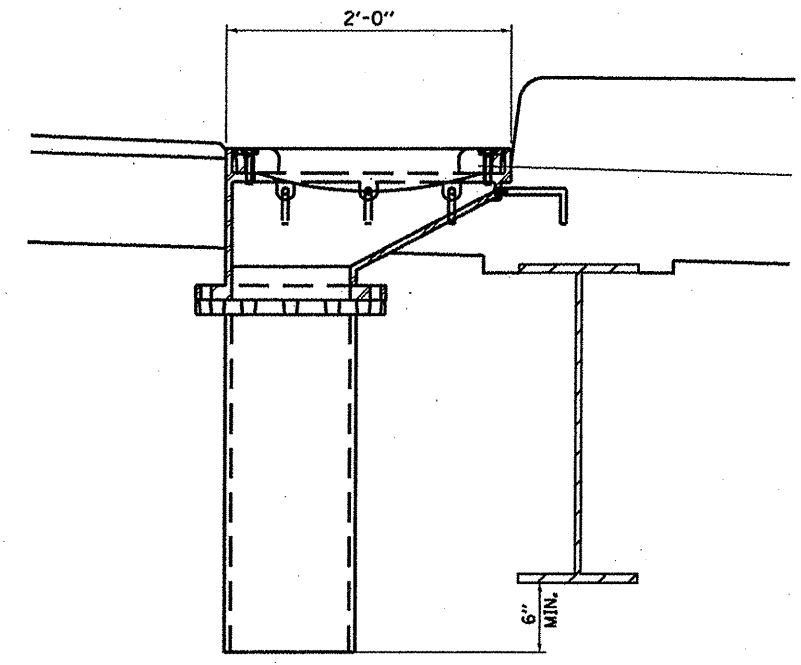
EXISTING 2" Ø GALVANIZED DRAIN PIPES SHALL BE REMOVED AND DISPOSED OF OFF THE RIGHT OF WAY.

EXISTING 2" Ø GALVANIZED DRAIN PIPES SHALL BE REMOVED AND DISPOSED OF OFF THE RIGHT OF WAY.



DETAIL A

EXISTING REINFORCEMENT SHALL BE CUT TO CLEAR DRAINAGE SCUPPER



SECTION AT DRAIN

CONCRETE REMOVAL & REPLACEMENT
PROTECTIVE COAT

BILL OF MATERIAL

ITEM	UNIT	QUANTITY
CONCRETE REMOVAL	Cu Yd	1.7
CONCRETE SUPERSTRUCTURE	Cu Yd	1.7
PROTECTIVE COAT	Sq Yd	4

DRAINAGE SCUPPER, DS-12M10
 IL RTE. 23 OVER OTTER CREEK
 FAP 68 (IL 23) SEC. (6B-1)
 LASALLE COUNTY
 STA. 142+08
 S.N. 050-0160

FILE NAME =	USER NAME = potelyj	DESIGNED - RLW	REVISED -
c:\pwork\puidot\potelyj\02257390\0365	37-details.dgn	DRAWN - RLW	REVISED -
PLOT SCALE = 100.0000' / 1"	CHECKED -	DATE -	REVISED -
PLOT DATE = 5/19/2011	DATE -	REVISED -	

STATE OF ILLINOIS
DEPARTMENT OF TRANSPORTATION

DRAINAGE SCUPPER, DS-12M10
 SCALE: _____ SHEET NO. 10 OF 12 SHEETS STA. _____ TO STA. _____

F.A.P. RTE.	SECTION	COUNTY	TOTAL SHEETS	SHEET NO.
68	(6B-1)	LASALLE	20	18
CONTRACT NO. 66937				
(ILLINOIS) FED. AID PROJECT				