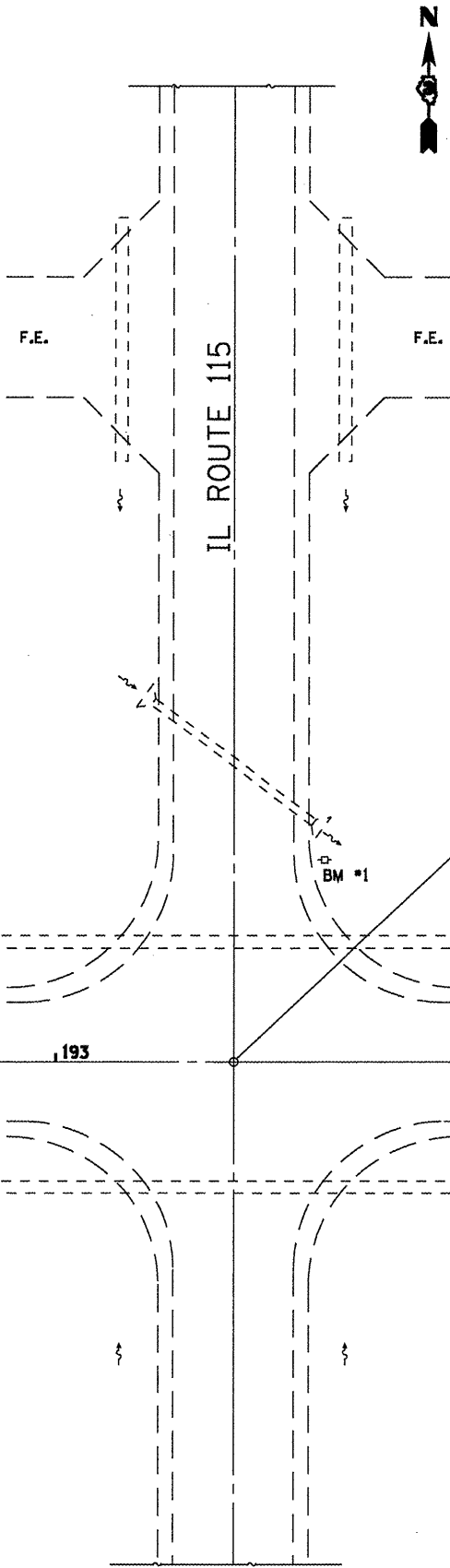
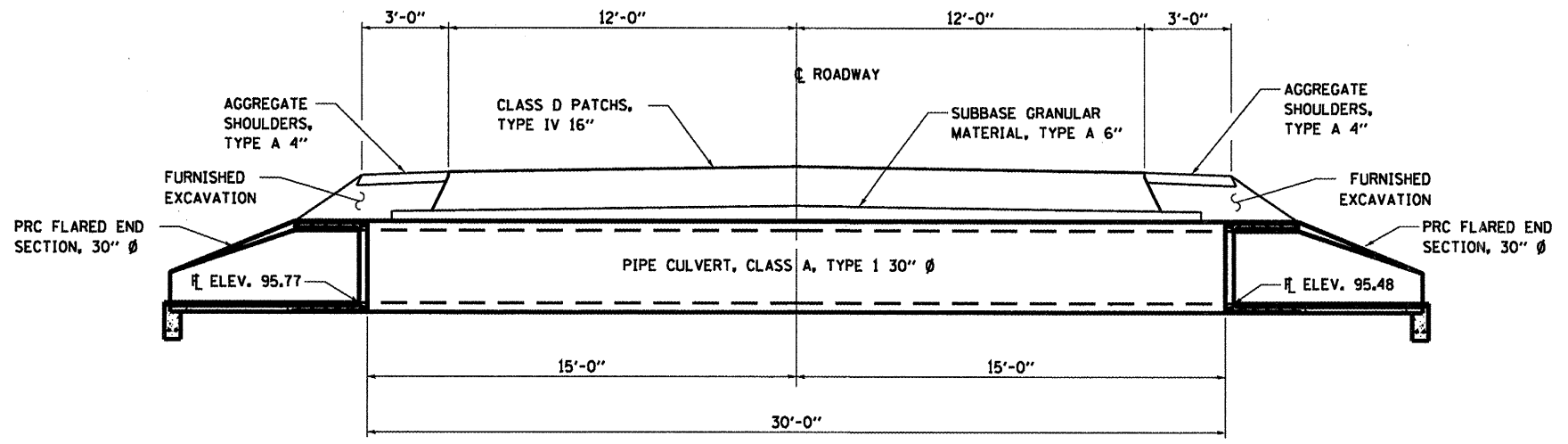


BM #1 SPIKE IN POWER POLE, NORTHEAST CORNER, ELEV. 100.00

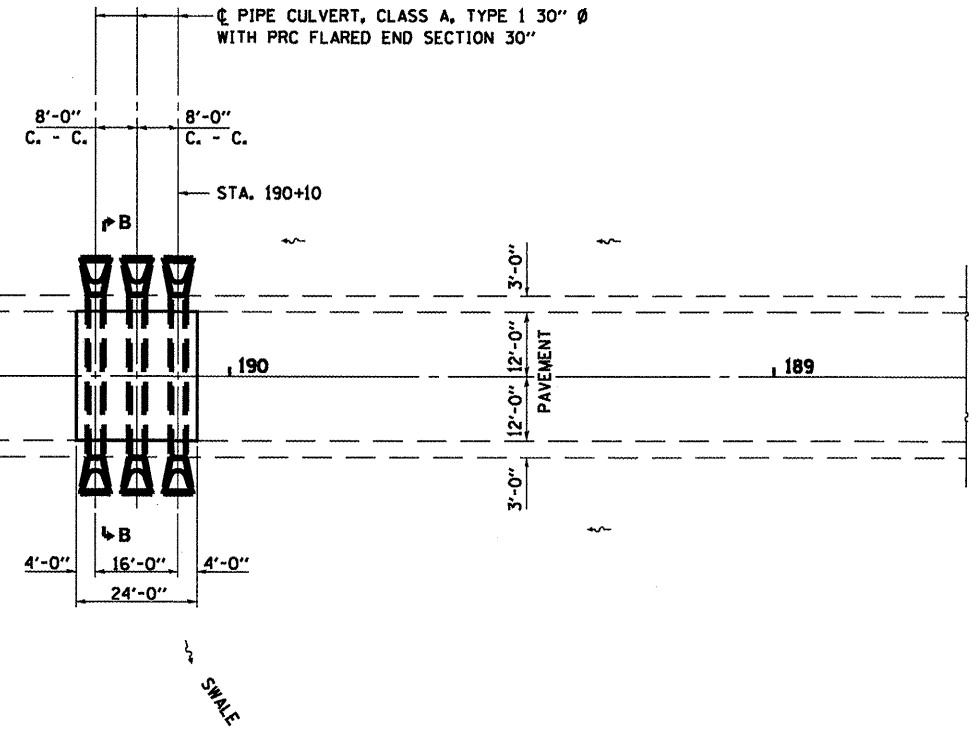


INTERSECTION
IL RTE. 9 & IL RTE. 115
STA. 192+66

PLAN



SECTION B-B
LOOKING EAST



SWALE

FILE NAME =
c:\paw_work\paw\dot\woodshenkr\1\0207695\

USER NAME = woodshenkr
0366814-shr-deta1.dgn
PLOT SCALE = 100.0000 / IN.
PLOT DATE = Feb 26, 2011 - 11:57:17 AM

DESIGNED - RLW	REVISED -
DRAWN - RLW	REVISED -
CHECKED -	REVISED -
DATE -	REVISED -

STATE OF ILLINOIS
DEPARTMENT OF TRANSPORTATION

PROPOSED PLAN DETAILS
SCALE: SHEET NO. 1 OF 1 SHEETS STA. TO STA.

F.A.P. RTE. 697	SECTION (17T)	COUNTY FORD	TOTAL SHEETS 7	SHEET NO. 6
CONTRACT NO. 66B14				
ILLINOIS FED. AID PROJECT				