

F.A.P. RTE.	SECTION	COUNTY	TOTAL SHEETS	SHEET NO.
697	(17)T	ILLINOIS	7	1
CONTRACT NO. 66B14				

**STATE OF ILLINOIS  
DEPARTMENT OF TRANSPORTATION  
DIVISION OF HIGHWAYS**

**PROPOSED  
HIGHWAY PLANS**

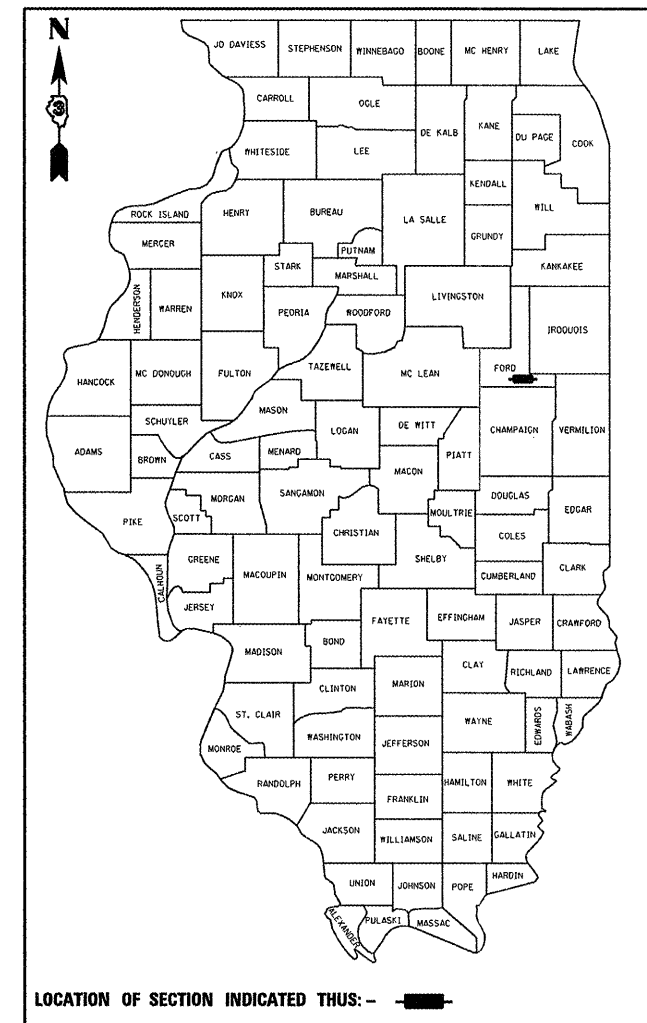
**FAP ROUTE 697 (IL 9)  
SECTION (17)T**

**CULVERT REMOVAL AND REPLACEMENT  
FORD COUNTY  
C-93-078-11**

- STANDARDS**
- COVER SHEET
  - GENERAL NOTES
  - SUMMARY OF QUANTITIES
  - TYPICAL SECTION
  - EXISTING PLAN DETAILS
  - PROPOSED PLAN DETAILS
  - FIELD TILE TREATMENT DETAILS

- STANDARDS**
- 000001-06 STANDARD SYMBOLS, ABBREVIATIONS AND PATTERNS  
001006 DECIMAL OF AN INCH AND OF A FOOT  
542301-03 PRECAST REINFORCED CONCRETE FLARED END SECTION  
542311-02 GRATING FOR CONCRETE FLARED END SECTION (FOR 24" (600 mm) THRU 54" (1350 mm) PIPE)  
701001-02 OFF-ROAD OPERATIONS 2L, 2W, MORE THAN 15' (4.5 m) AWAY  
701006-03 OFF-ROAD OPERATIONS 2L, 2W, 15' (4.5 m) TO 24" (600 mm) FROM PAVEMENT EDGE  
701201-04 LANE CLOSURE, 2L, 2W, DAY ONLY, FOR SPEEDS ≥ 45 MPH  
701301-04 LANE CLOSURE, 2L, 2W, SHORT TIME OPERATIONS  
701311-03 LANE CLOSURE, 2L, 2W, MOVING OPERATIONS - DAY ONLY  
701901-01 TRAFFIC CONTROL DEVICES

D-93-062-11

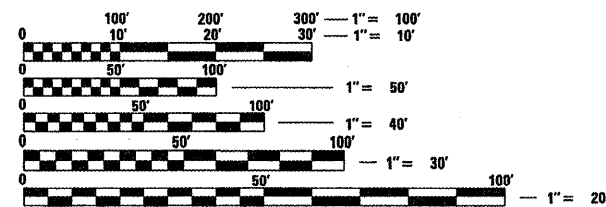


LOCATION OF SECTION INDICATED THUS: — ■ —

**MAJOR COLLECTOR**  
FAP RTE. 697 (IL 9)

2010	
ADT	2350
P.V.	89.3%
S.U.	4.3%
M.U.	6.4%

**PROJECT LOCATION**  
DUAL CROSS ROAD CULVERTS  
AT STA. 190+10  
+/-256' FT. EAST OF IL ROUTE 115

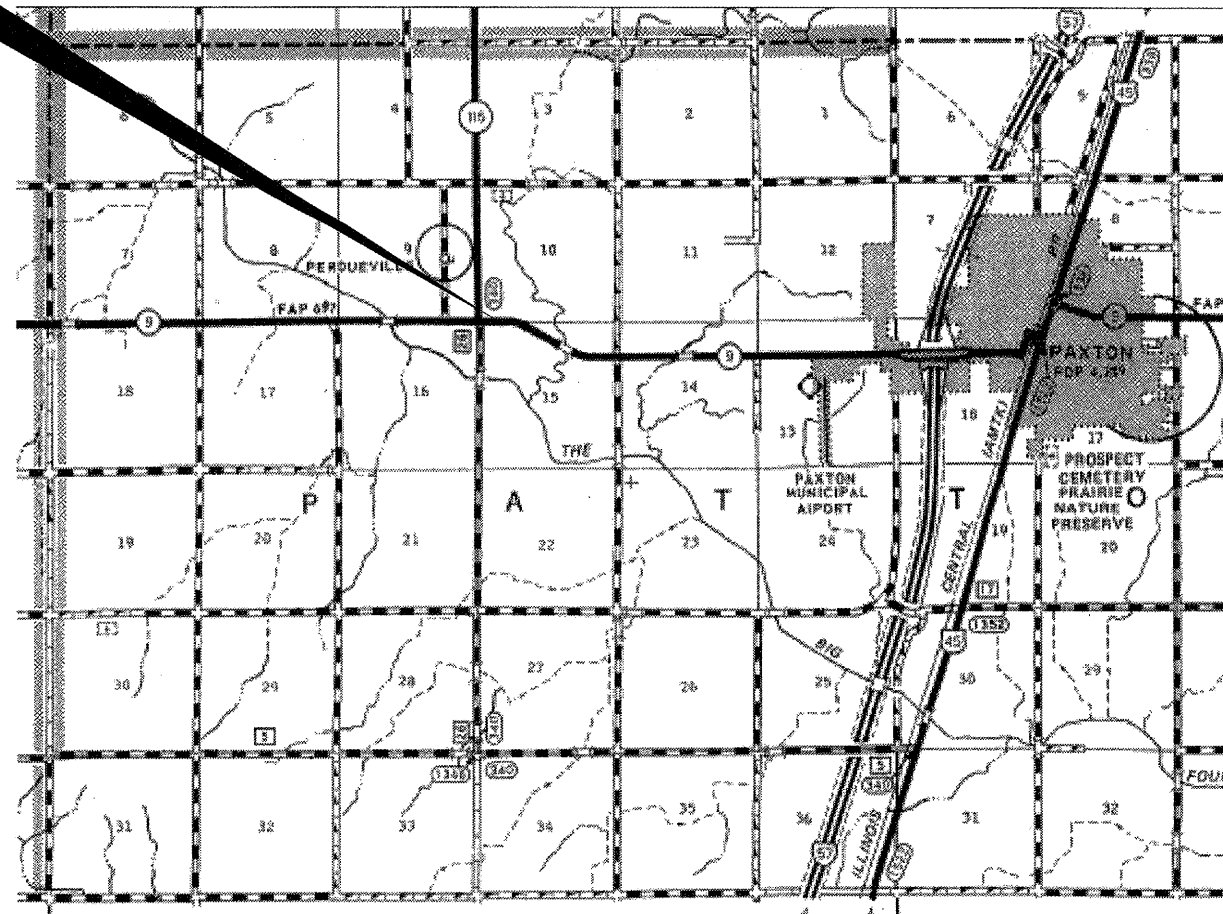


FULL SIZE PLANS HAVE BEEN PREPARED USING STANDARD ENGINEERING SCALES. REDUCED SIZED PLANS WILL NOT CONFORM TO STANDARD SCALES. IN MAKING MEASUREMENTS ON REDUCED PLANS, THE ABOVE SCALES MAY BE USED.

J.U.L.I.E.  
JOINT UTILITY LOCATION INFORMATION FOR EXCAVATION  
1-800-892-0123  
OR 811

**PROJECT ENGINEER: JOE KANNEL  
UNIT CHIEF: RON WOODSHANK  
TOWNSHIP: PATTON**

**CONTRACT NO. 66B14**



POINT LOCATION

STATE OF ILLINOIS  
DEPARTMENT OF TRANSPORTATION  
DIVISION OF HIGHWAYS

SUBMITTED 4/7 20 11  
Eric S. Therkelsen  
DEPUTY DIRECTOR OF HIGHWAYS, REGION ENGINEER  
May 13 20 11  
Scott E. Stitt, P.E.  
acting ENGINEER OF DESIGN AND ENVIRONMENT  
May 13 20 11  
Christine M. Reed  
DIRECTOR OF HIGHWAYS, CHIEF ENGINEER

**PRINTED BY THE AUTHORITY  
OF THE STATE OF ILLINOIS**

**GENERAL NOTES**

THE THICKNESS OF HMA SHOWN ON THE PLANS IS THE NOMINAL THICKNESS. DEVIATIONS FROM THE NOMINAL THICKNESS WILL BE PERMITTED WHEN SUCH DEVIATIONS OCCUR DUE TO IRREGULARITIES IN THE EXISTING SURFACE OR BASE ON WHICH THE HMA IS PLACED.

EXCEPT AS NOTED ON THE PLANS, PAVEMENT GRADES SHOWN ARE AT THE TOP OF PAVEMENT SURFACES.

BEFORE ORDERING PIPE CULVERTS OR PIPE DRAINS, THE CONTRACTOR SHALL CONSULT THE ENGINEER FOR EXACT LENGTHS.

THE ENGINEER WILL BE THE SOLE JUDGE CONCERNING CURING TIME FOR THE VARIOUS HMA LIFTS.

FOR STABILIZATION, ALL TYPE III BARRICADES SHALL REQUIRE A MINIMUM OF FOUR SAND BAGS PER BARRICADE.

SEEDING SHALL NOT BE PERMITTED AT ANY TIME WHEN THE GROUND IS FROZEN, WET, OR IN AN UNTILLABLE CONDITION. LOCATIONS TO BE SEEDED WILL BE DETERMINED BY THE ENGINEER.

THE FINISHED EARTHWORK SHALL HAVE A VEGETATION SUSTAINING SOIL COVERING THE TOP FOUR INCHES IN AREAS TO BE SEEDED OR SODDED. THE VEGETATION SUSTAINING SOIL REQUIRED WILL NOT BE PAID FOR SEPARATELY BUT SHALL BE INCLUDED IN THE COST OF "FURNISHED EXCAVATION".

ABANDONED UNDERGROUND UTILITIES THAT CONFLICT WITH CONSTRUCTION SHALL BE DISPOSED OF OUTSIDE THE LIMITS OF THE RIGHT OF WAY ACCORDING TO ARTICLE 202.03 OF THE STANDARD SPECIFICATIONS AND AS DIRECTED BY THE ENGINEER. THIS WORK WILL NOT BE PAID FOR SEPARATELY, BUT SHALL BE INCLUDED IN THE COST OF EARTH EXCAVATION.

ANY REFERENCE TO A STANDARD IN THESE PLANS SHALL BE INTERPRETED TO MEAN THE EDITION AS INDICATED BY THE SUBNUMBER SHOWN IN THE LIST OF STANDARDS OR THE COPY INCLUDED IN THESE PLANS.

THE CONTRACTOR SHALL CONTACT JULIE AT LEAST 48 HOURS PRIOR TO EXCAVATION TO DETERMINE WHICH UTILITIES ARE IN THE AREA.

THE FOLLOWING RATES OF APPLICATION HAVE BEEN USED IN CALCULATING PLAN QUANTITIES:

GRANULAR MATERIALS	2.05	TONS / CU YD
BIT MATERIALS (PRIME COAT) ON AGGREGATE BASES	0.375	GAL / SQ YD
BITUMINOUS MATERIALS (PRIME COAT)	0.08	GAL / SQ YD
AGGREGATE PRIME COAT	0.002	TONS / SQ YD
HMA RESURFACING	112	LBS / SQ YD / IN
SHORT TERM PAVEMENT MARKING	10	FT /100 FT OF APPLICATION

**COMMITMENTS**

NONE 2/4/2011

	Full Depth HMA Bottom 13 3/4"	Full Depth HMA Top 2 1/4" (3/4" lb; 1 1/2" Surface)
PG GRADE	PG 58-28	PG 64-22
DESIGN AIR VOIDS	4.0% @ N50	4.0% @ N50
MIXTURE COMPOSITION	IL 19.0	IL 9.5
FRICTION AGGREGATE		MIXTURE C
DENSITY TEST METHOD	CORES	CORES

DATE: 4/7/2011

PREPARED BY: Dave Brovick  
DISTRICT STUDIES & PLANS ENGINEER

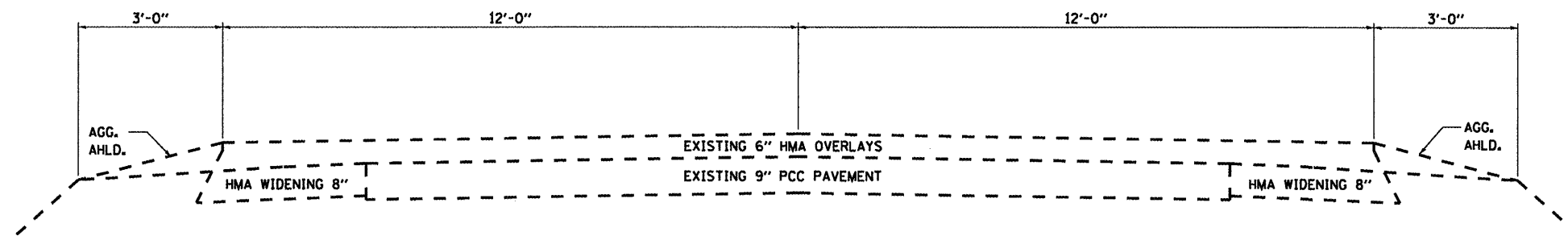
EXAMINED BY: [Signature]  
DISTRICT CONSTRUCTION ENGINEER

Wayne L. Phillips  
DISTRICT MATERIALS ENGINEER

[Signature]  
DISTRICT OPERATIONS ENGINEER

CODE NO.	ITEM	UNIT	TOTAL QUANTITY	CONSTRUCTION CODE	
				STATE FUNDS	100% STATE
				STRUCTURE	
				0040	
				RURAL	
20200100	EARTH EXCAVATION	CU YD	117		117
20400800	FURNISHED EXCAVATION	CU YD	117		117
21301048	EXPLORATION TRENCH 48" DEPTH	FOOT	100		100
21400100	GRADING AND SHAPING DITCHES	FOOT	100		100
25100635	HEAVY DUTY EROSION CONTROL BLANKET	SQ YD	90		90
31101400	SUBBASE GRANULAR MATERIAL, TYPE B 6"	SQ YD	75		75
44000100	PAVEMENT REMOVAL	SQ YD	64		64
44201845	CLASS D PATCHES, TYPE IV, 16 INCH	SQ YD	64		64
48101500	AGGREGATE SHOULDERS, TYPE B 6"	SQ YD	16		16
50105220	PIPE CULVERT REMOVAL	FOOT	48		48
542A0235	PIPE CULVERTS, CLASS A, TYPE 1 30"	FOOT	90		90
54213675	PRECAST REINFORCED CONCRETE FLARED END SECTIONS 30"	EACH	6		6
54247150	GRATING FOR CONCRETE FLARED END SECTION 30"	EACH	6		6
59300100	CONTROLLED LOW-STRENGTH MATERIAL	CU YD	74		74
67100100	MOBILIZATION	L SUM	1		1
70100450	TRAFFIC CONTROL AND PROTECTION, STANDARD 701201	L SUM	1		1
* 78001110	PAINT PAVEMENT MARKING - LINE 4"	FOOT	44		44
* 78001130	PAINT PAVEMENT MARKING - LINE 6"	FOOT	10		10
XX008401	BOX CULVERT REMOVAL	FOOT	30		30

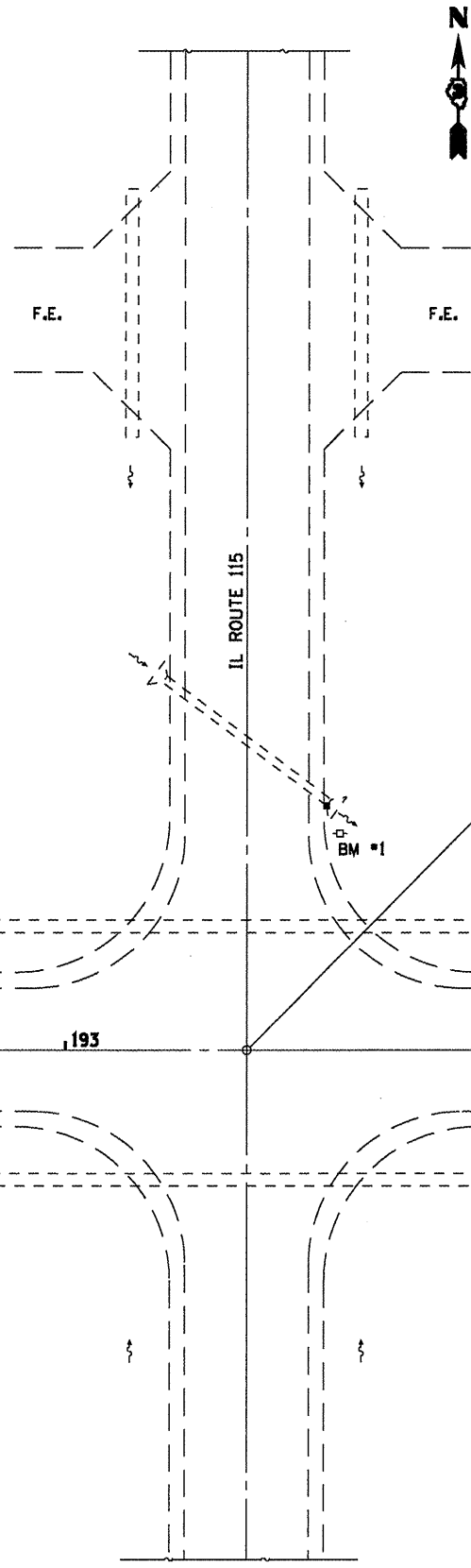
\*SPECIALITY ITEMS



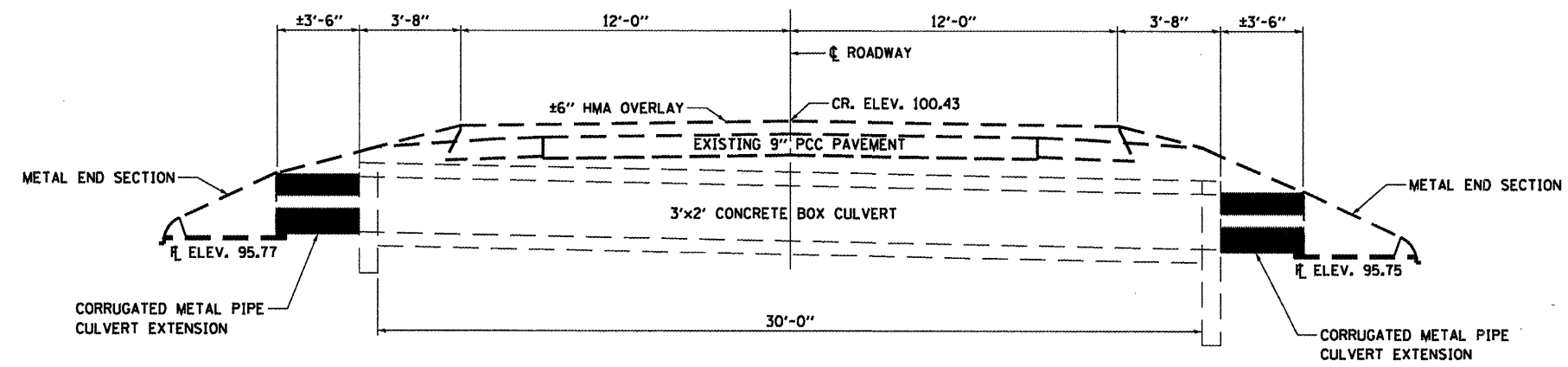
**TYPICAL SECTION**

FILE NAME =	USER NAME = woodshankr1	DESIGNED - RLW	REVISED -	<b>STATE OF ILLINOIS DEPARTMENT OF TRANSPORTATION</b>	<b>TYPICAL SECTION</b>	F.A.P. RTE.	SECTION	COUNTY	TOTAL SHEETS	SHEET NO.
c:\pwork\pwork\woodshankr1\d0267655\0366B14-sht-detail1.dgn	DRAWN - RLW	REVISED -	697			(17)T	FORD	7	4	
PLOT SCALE = 1/8" = 1'-0" / IN.	CHECKED -	REVISED -	CONTRACT NO. 66B14							
PLOT DATE = Feb 25, 2011 - 11:56:54 AM	DATE -	REVISED -	ILLINOIS FED. AID PROJECT							
				SCALE: _____	SHEET NO. 1 OF 1 SHEETS	STA. _____	TO STA. _____			

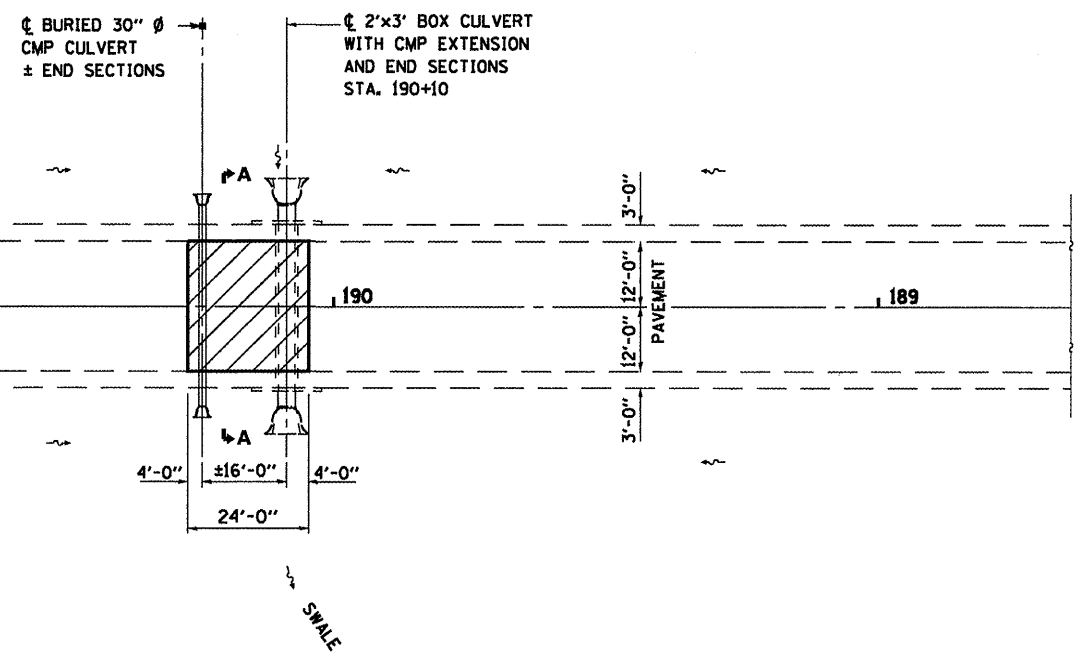
BM #1 SPIKE IN POWER POLE, NORTHEAST CORNER; ELEV. 100.00



**PLAN**

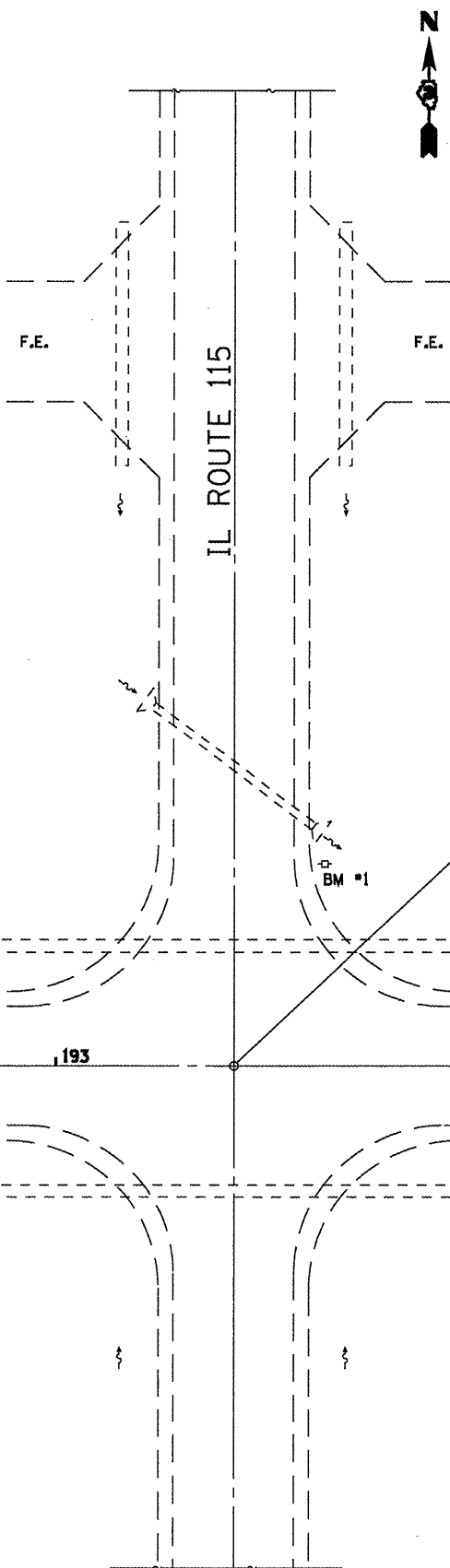


**SECTION A-A**  
LOOKING EAST



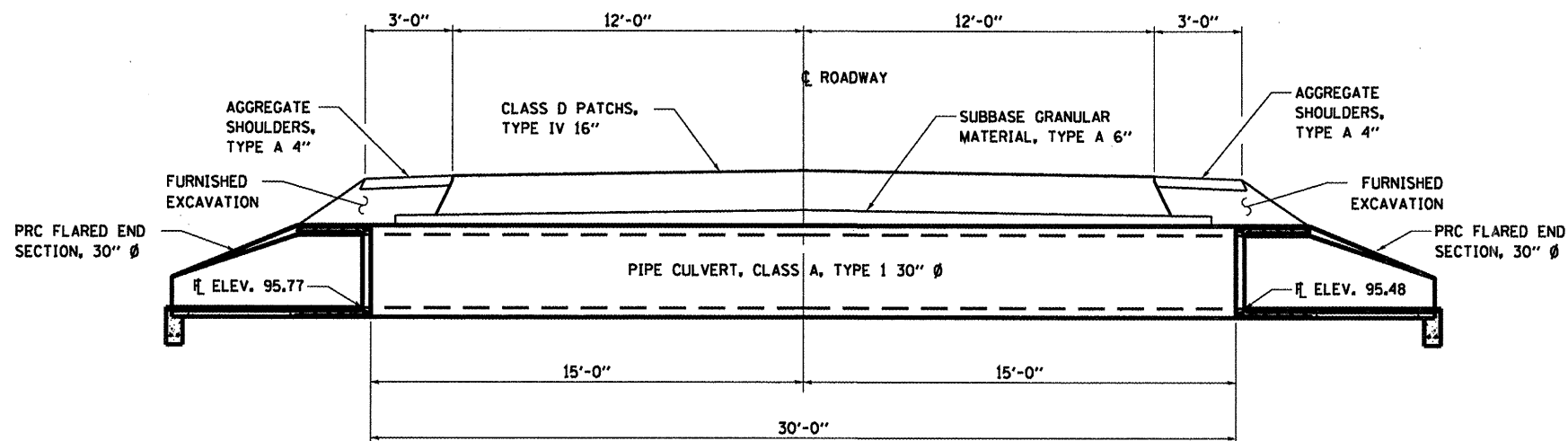
FILE NAME = c:\pwwork\pwwork\woodshankr1\d0257855\0368B14-sht-detail.dgn	USER NAME = woodshankr1	DESIGNED - RLW	REVISED -	<b>STATE OF ILLINOIS DEPARTMENT OF TRANSPORTATION</b>	<b>EXISTING PLAN DETAILS</b>	F.A.P. RTE. = 697	SECTION = (17)T	COUNTY = FORD	TOTAL SHEETS = 7	SHEET NO. = 5
	PLOT SCALE = 1/8" = 1'-0"	DRAWN - RLW	REVISED -			CONTRACT NO. 66B14				
	PLOT DATE = Feb 25, 2011 - 11:57:05 AM	CHECKED -	REVISED -			ILLINOIS FED. AID PROJECT				
		DATE -	REVISED -			SCALE: SHEET NO. 1 OF 1 SHEETS STA. TO STA.				

BM #1 SPIKE IN POWER POLE, NORTHEAST CORNER, ELEV. 100.00

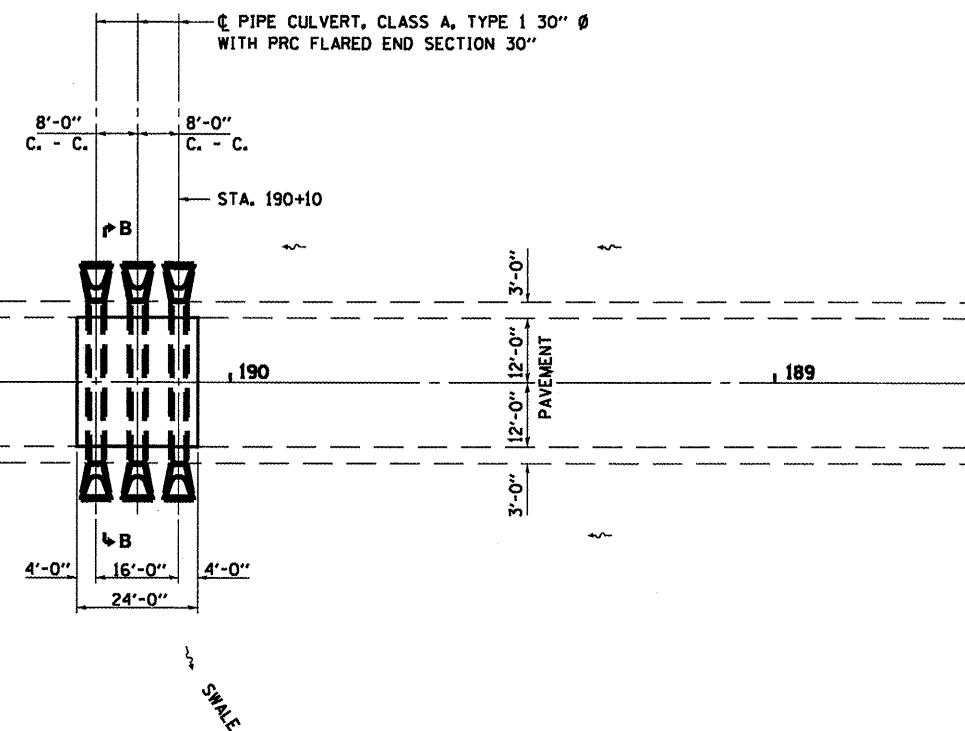


INTERSECTION  
IL RTE. 9 & IL RTE. 115  
STA. 192+66

**PLAN**



**SECTION B-B**  
LOOKING EAST



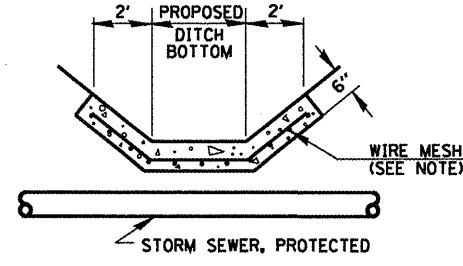
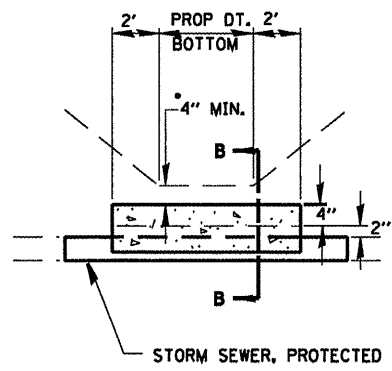
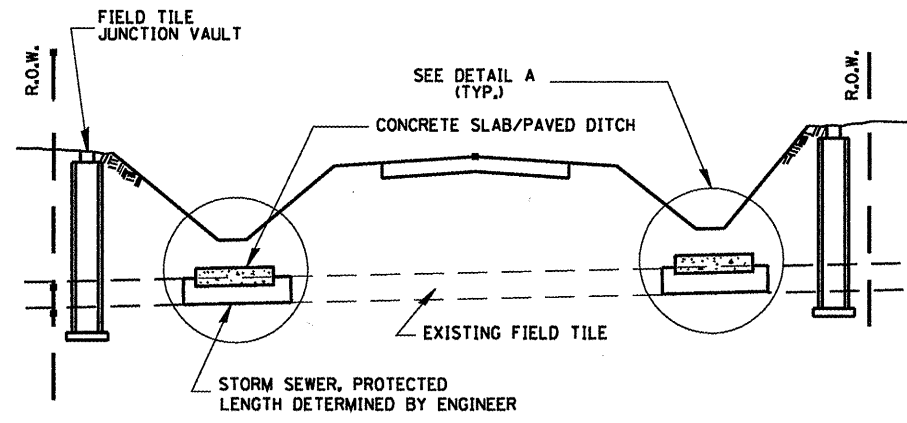
FILE NAME =	USER NAME = woodshenkr1	DESIGNED - RLW	REVISED -
c:\paw_work\pawidot\woodshenkr1\d0267695\0366814-sht-detail.dgn		DRAWN - RLW	REVISED -
PLOT SCALE = 100.0000 / IN.		CHECKED -	REVISED -
PLOT DATE = Feb 26, 2011 - 11:57:17 AM		DATE -	REVISED -

STATE OF ILLINOIS  
DEPARTMENT OF TRANSPORTATION

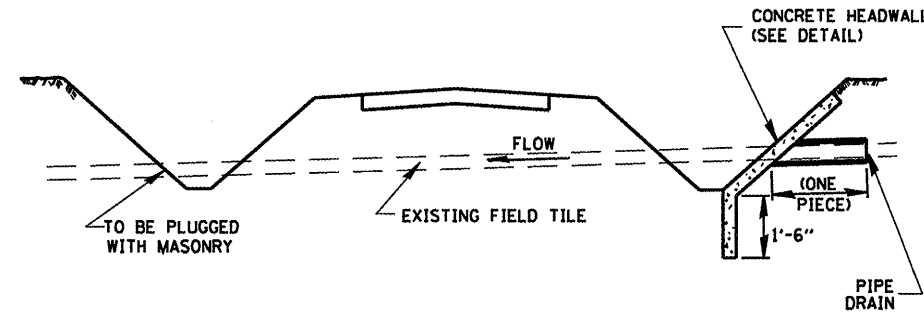
**PROPOSED PLAN DETAILS**

SCALE: SHEET NO. 1 OF 1 SHEETS STA. TO STA.

F.A.P. RTE. 697	SECTION (17)T	COUNTY FORD	TOTAL SHEETS 7	SHEET NO. 6
CONTRACT NO. 66B14				
ILLINOIS FED. AID PROJECT				



ALTERNATE MATERIALS FOR WALLS	T
PRECAST REINFORCED CONCRETE RISERS	4"
CONCRETE MASONRY UNIT	5"
MONOLITHIC CONCRETE	6"
BUILDING BRICK, GRADE SW FROM CLAY OR SHALE	8"
CONCRETE BUILDING BRICK, GRADE A	8"

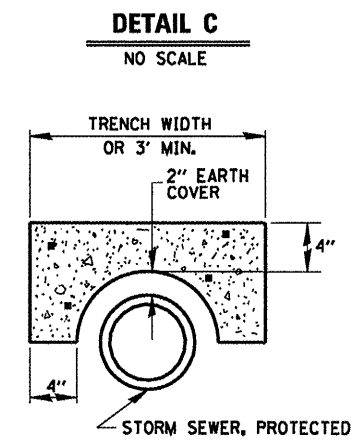


**DETAIL A**  
NO SCALE

\* IF A 4" COVER CAN NOT BE PROVIDED A PAVED DITCH SHALL BE CONSTRUCTED AS SHOWN IN DETAIL C.

**NOTES**

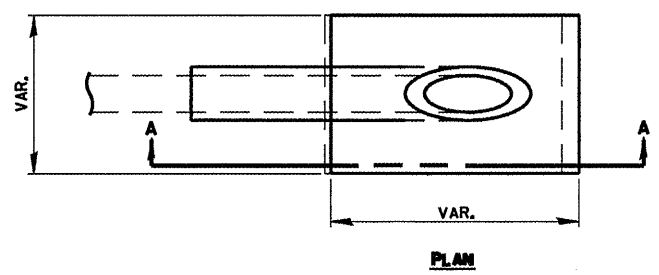
1. WIDTH OF CONCRETE SLAB SHALL BE THE SAME AS THE TRENCH WIDTH IN ACCORDANCE WITH SECTION 550 OF THE STD. SPECIFICATIONS, OR 3' MIN.
2. CONCRETE FOR SLAB, HEADWALL AND PAVED DITCH SHALL BE PAID FOR AT THE CONTRACT UNIT PRICE PER CUBIC YARD FOR "MISCELLANEOUS CONCRETE."
3. COST OF FURNISHING AND INSTALLING WIRE MESH SHALL BE INCLUDED IN THE CONTRACT UNIT PRICE PER CUBIC YARD FOR MISCELLANEOUS CONCRETE. WIRE MESH TO WEIGH NOT LESS THAN 58# PER 100 SQ. FT.



**NOTES**

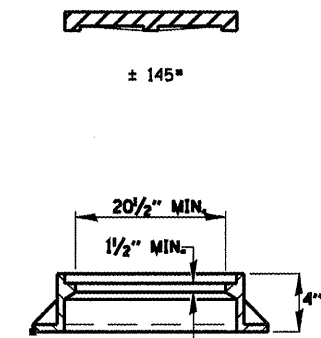
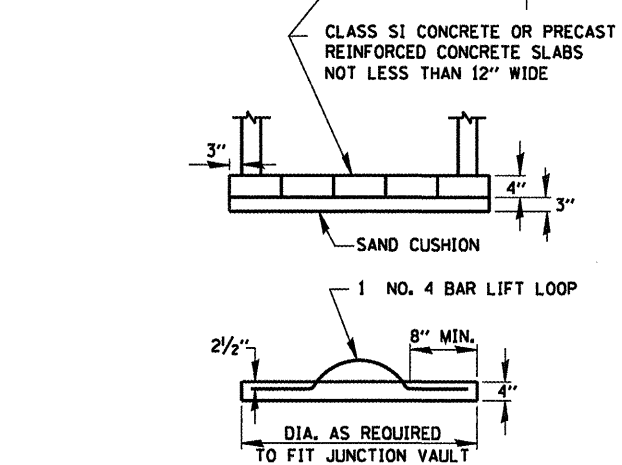
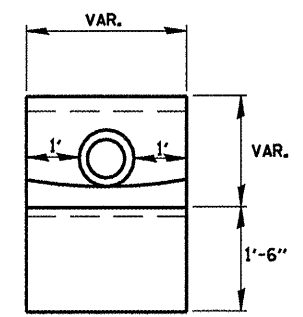
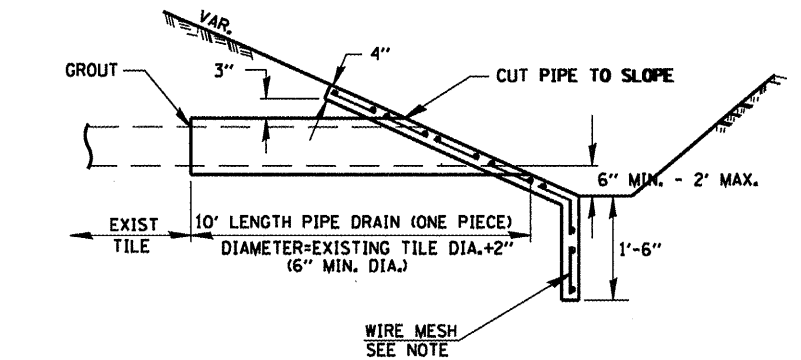
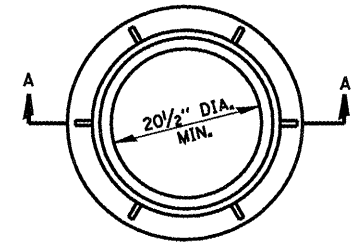
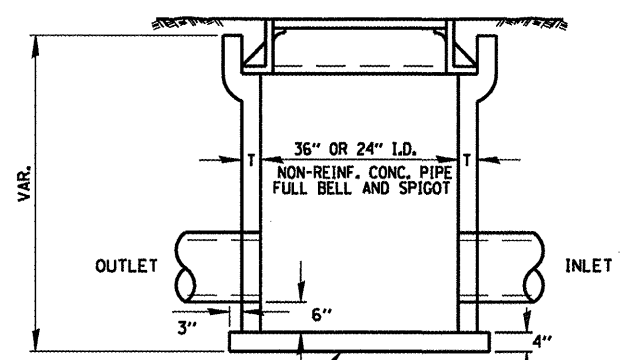
1. THE CONTRACT UNIT PRICE FOR FIELD TILE JUNCTION VAULT SHALL INCLUDE THE COST OF FURNISHING AND PLACING THE FRAME AND GRATE OR PRECAST CONCRETE LID AND WHEN REQUIRED, THE SAND CUSHION.
2. ALL FIELD TILE JUNCTION VAULTS SHALL BE 2'-0" IN DIAMETER UNLESS OTHERWISE NOTED ON THE PLANS.

**FIELD TILE REPLACEMENT**



**NOTES**

1. ANY STORM SEWER OR FIELD TILE OUTLET INTO A DITCH SHALL HAVE A HEADWALL BUILT IN ACCORDANCE WITH THIS DETAIL.
2. COST OF FURNISHING AND INSTALLING WIRE MESH SHALL BE INCLUDED IN THE CONTRACT UNIT PRICE PER CUBIC YARD FOR MISCELLANEOUS CONCRETE. WIRE MESH TO WEIGH NOT LESS THAN 58# PER 100 SQ. FT.



**SECTION A-A**

**CLASS SI CONCRETE HEADWALLS**

**FIELD TILE JUNCTION VAULT**

FILE NAME =	USER NAME = woodshankr1	DESIGNED - RLW	REVISED -
c:\pwwork\pwwork\woodshankr1\d0257855\03668(4-sht-deta)1.dgn	03668(4-sht-deta)1.dgn	DRAWN - RLW	REVISED -
PLOT SCALE = 100.0000 / IN.	CHECKED -	REVISIONS	REVISED -
PLOT DATE = Feb 25, 2011 - 11:57:27 AM	DATE -	REVISED -	REVISED -

STATE OF ILLINOIS  
DEPARTMENT OF TRANSPORTATION

FIELD TILE TREATMENT DETAILS

SCALE: SHEET NO. 1 OF 1 SHEETS STA. TO STA.

F.A.P. RTE. 697	SECTION (17T)	COUNTY FORD	TOTAL SHEETS 7	SHEET NO. 7
			CONTRACT NO. 66B14	
ILLINOIS FED. AID PROJECT				