

INDEX OF SHEETS

1. COVER SHEET
2. GENERAL NOTES
3. SUMMARY OF QUANTITIES
4. TYPICAL SECTION
5. WETLANDS PROTECTION DETAIL
6. GENERAL PLAN AND ELEVATION SN 046-0109
7. REPAIR DETAILS SN 046-0109

STANDARDS

- |           |  |
|-----------|--|
| 000001-06 | STANDARD SYMBOLS, ABBREVIATIONS AND PATTERNS                               |
| 001006    | DECIMAL OF AN INCH AND OF A FOOT   |
| 701001-02 | OFF-ROAD OPERATIONS 2L, 2W, MORE THAN 15' (4.5 m) AWAY                     |
| 701006-03 | OFF-ROAD OPERATIONS 2L, 2W, 15' (4.5 m) TO 24" (600 mm) FROM PAVEMENT EDGE |
| 701201-04 | LANE CLOSURE, 2L, 2W, DAY ONLY, FOR SPEEDS **e** 45 MPH                    |
| 701301-04 | LANE CLOSURE, 2L, 2W, SHORT TIME OPERATIONS                                |
| 701901-01 | TRAFFIC CONTROL DEVICES  |

**STATE OF ILLINOIS**  
**DEPARTMENT OF TRANSPORTATION**  
**DIVISION OF HIGHWAYS**  
**PROPOSED**  
**HIGHWAY PLANS**

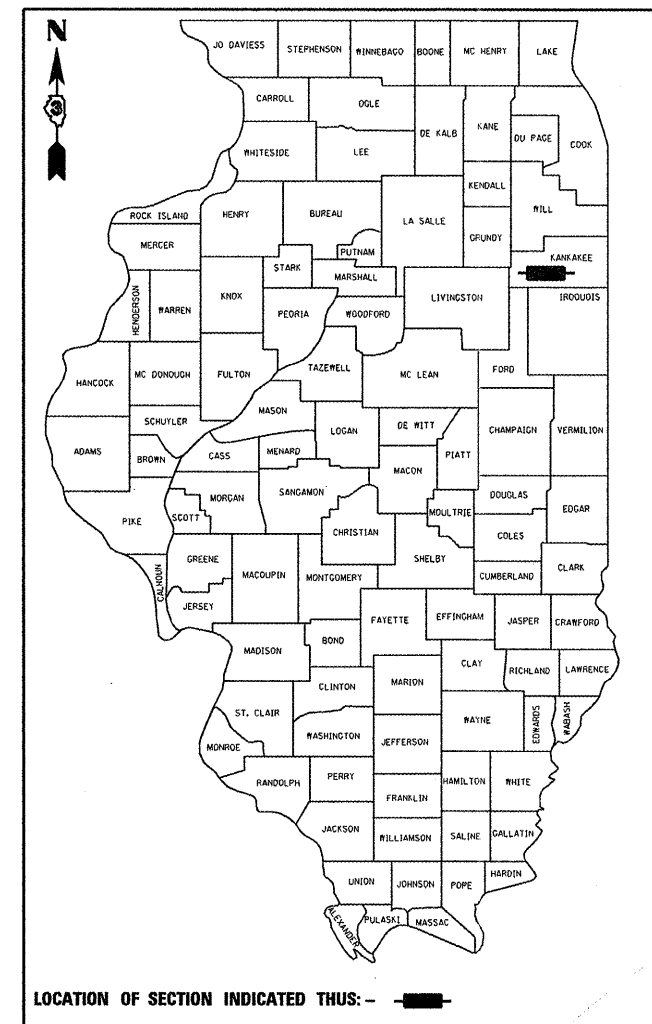
**FAS 1323 (IL 115)**  
**SECTION (102BR)I**

**BRIDGE REPAIR**  
**KANKAKEE COUNTY**

C-93-104-11

F.A.S. RTE. 1323	SECTION (102BR)I	COUNTY KANKAKEE	TOTAL SHEETS 7	SHEET NO. 1
ILLINOIS			CONTRACT NO. 66B34	

D-93-080-11



LOCATION OF SECTION INDICATED THUS: — ■ —

MAJOR COLLECTOR

FAS 1323 (IL 115)

2010

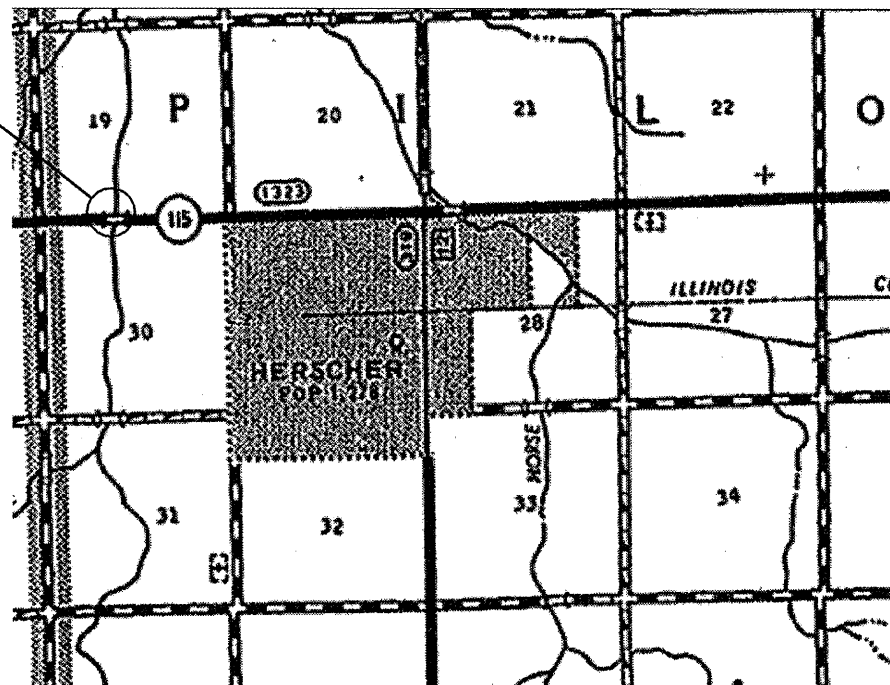
ADT	1550
P.V.	91.0%
S.U.	6.4%
M.U.	2.6%

STATE OF ILLINOIS  
 DEPARTMENT OF TRANSPORTATION  
 DIVISION OF HIGHWAYS

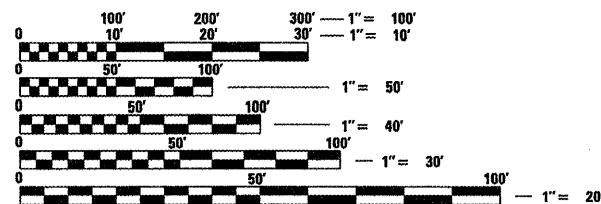
SUBMITTED 4/7 20 11  
*Eric S. Theriault*  
 DEPUTY DIRECTOR OF HIGHWAYS, REGION ENGINEER  
May 13 20 11  
*Scott E. Stitt* P.E.  
 acting ENGINEER OF DESIGN AND ENVIRONMENT  
May 13 20 11  
*Christine M. Reed*  
 DIRECTOR OF HIGHWAYS, CHIEF ENGINEER

**PROJECT LOCATION**

S.N. 046-0109 CARRYING FAS 1323 (IL 115)  
 OVER THE WEST BRANCH OF HORSE CREEK  
 0.5 MILES WEST OF HERSCHER



POINT LOCATION



FULL SIZE PLANS HAVE BEEN PREPARED USING STANDARD ENGINEERING SCALES. REDUCED SIZED PLANS WILL NOT CONFORM TO STANDARD SCALES. IN MAKING MEASUREMENTS ON REDUCED PLANS, THE ABOVE SCALES MAY BE USED.

J.U.L.I.E.  
 JOINT UTILITY LOCATION INFORMATION FOR EXCAVATION  
 1-800-892-0123  
 OR 811

**PROJECT ENGINEER: JOE KANNEL P.E.**  
**UNIT CHIEF: RON WOODSHANK**  
**TOWNSHIP: PILOT**  
**CONTRACT NO. 66B34**

**PRINTED BY THE AUTHORITY**  
**OF THE STATE OF ILLINOIS**

GENERAL NOTES

PLAN DIMENSIONS AND DETAILS RELATIVE TO EXISTING PLANS ARE SUBJECT TO ROUTINE VARIATIONS. THE CONTRACTOR SHALL FIELD VERIFY EXISTING DIMENSIONS AND DETAILS AFFECTING NEW CONSTRUCTION AND MAKE NECESSARY APPROVED ADJUSTMENTS PRIOR TO CONSTRUCTION OR ORDERING OF MATERIALS. SUCH VARIATIONS SHALL NOT BE CAUSE FOR ADDITIONAL COMPENSATION FOR A CHANGE IN THE SCOPE OF THE WORK. HOWEVER, THE CONTRACTOR WILL BE PAID FOR THE QUANTITY FURNISHED BASED UPON THE UNIT BID PRICE FOR THE WORK.

FOR STABILIZATION, ALL TYPE III BARRICADES SHALL REQUIRE A MINIMUM OF FOUR SAND BAGS PER BARRICADE.

ANY REFERENCE TO A STANDARD IN THESE PLANS SHALL BE INTERPRETED TO MEAN THE EDITION AS INDICATED BY THE SUBNUMBER LISTED ON THE INDEX OF SHEETS OR THE COPY OF THE STANDARD INCLUDED IN THESE PLANS.

DATE: 4/7/2011

PREPARED BY: Dave Barwick  
DISTRICT STUDIES & PLANS ENGINEER

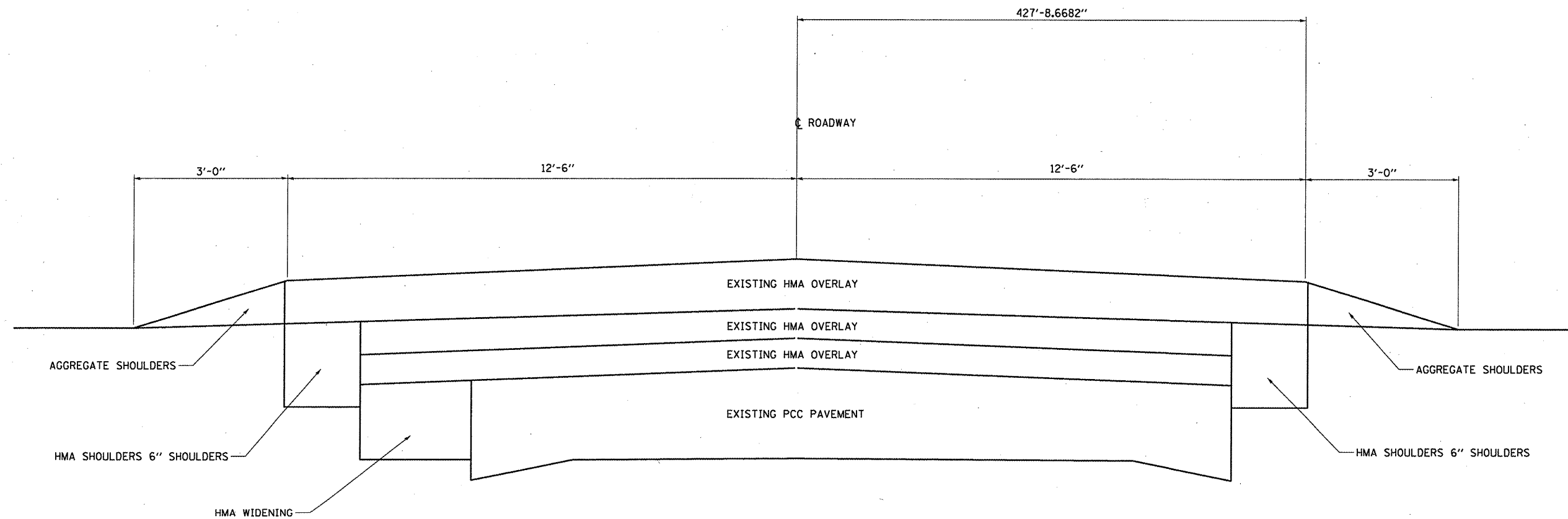
EXAMINED BY: [Signature]  
DISTRICT CONSTRUCTION ENGINEER

Wayne L Phillips  
DISTRICT MATERIALS ENGINEER

[Signature]  
DISTRICT OPERATIONS ENGINEER

FILE NAME =	USER NAME = potelyj	DESIGNED - RON_WOODSHANK	REVISED -	<b>STATE OF ILLINOIS DEPARTMENT OF TRANSPORTATION</b>	<b>GENERAL NOTES</b>	F.A.S. RTE.	SECTION	COUNTY	TOTAL SHEETS	SHEET NO.
c:\pwr_work\pwidot\potelyj\0260515\0366834-shr-details.DGN	DRAWN - RON_WOODSHANK	REVISED -	1323			(102BR)I	KANKAKEE	7	2	
PLOT SCALE = 100.0046' / IN.	CHECKED -	REVISED -	CONTRACT NO. 66B34							
PLOT DATE = Apr 07, 2011 - 09:25:57 AM	DATE -	REVISED -	ILLINOIS FED. AID PROJECT							
		SCALE: _____ SHEET NO. 1 OF 1 SHEETS			STA. _____ TO STA. _____					

CODE NO.	ITEM	UNIT	TOTAL QUANTITY	CONSTR. CODE
				100% STATE STRUCTURE 0014 RURAL
50500405	FURNISHING AND ERECTING STRUCTURAL STEEL	POUND	27,630	27,630
20101000	TEMPORARY FENCE	FOOT	146	146
28000400	PERIMETER EROSION BARRIER	FOOT	146	146
67100100	MOBILIZATION	L SUM	1	1
70100450	TRAFFIC CONTROL AND PROTECTION, STANDARD 701201	L SUM	1	1



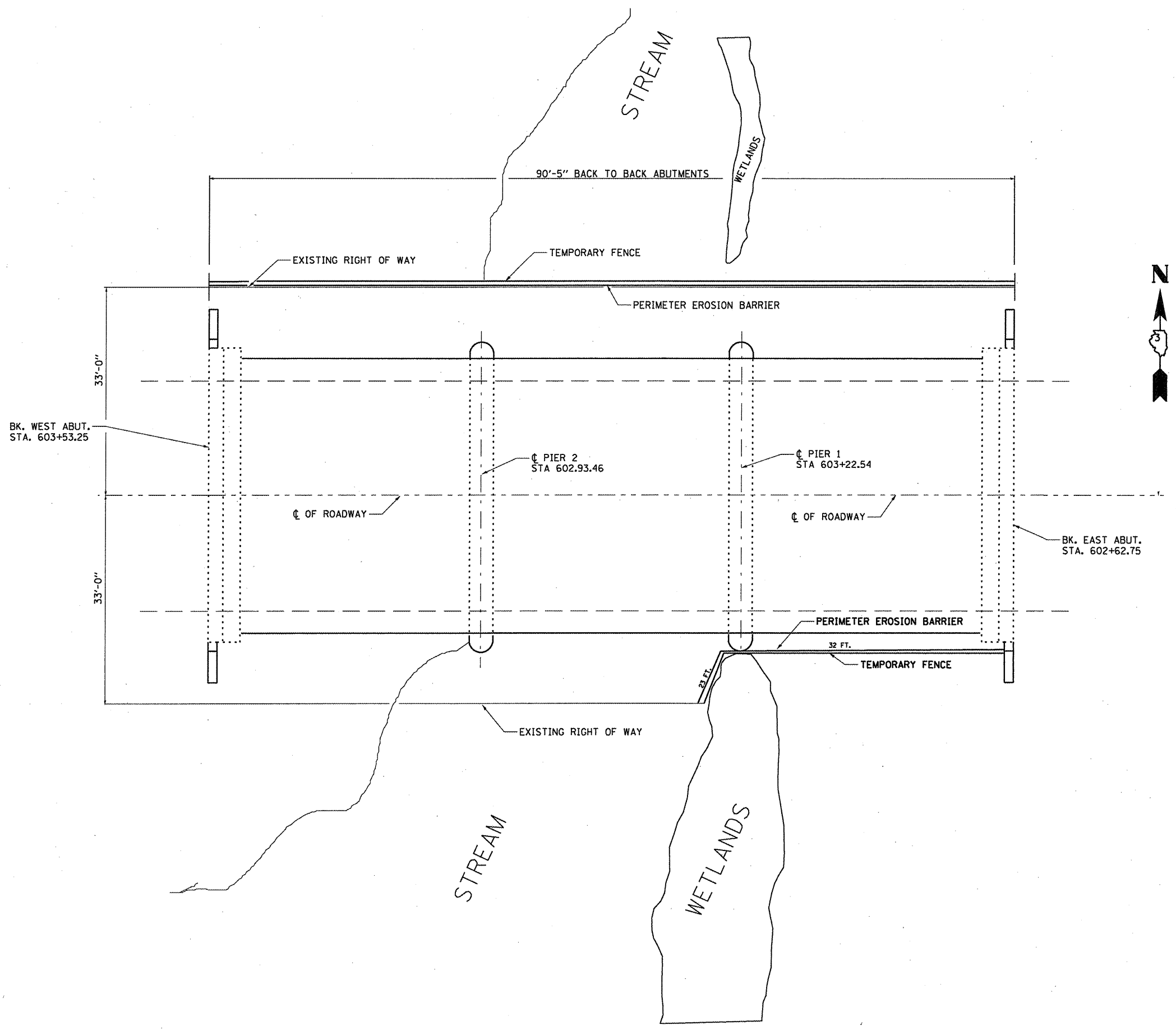
FILE NAME =	USER NAME = potelij	DESIGNED - RQN_WOODSHANK	REVISED -
ca:\pw_work\pwidot\potelij\0260515\036834-shd-details.DGN	DRAWN - RQN_WOODSHANK	CHECKED -	REVISED -
PLOT SCALE = 100.0201' / IN.	DATE -	REVISOR -	REVISOR -
PLOT DATE = Apr 07, 2011 - 09:26:43 AM			

**STATE OF ILLINOIS  
DEPARTMENT OF TRANSPORTATION**

**TYPICAL SECTION**

SCALE: \_\_\_\_\_ SHEET NO. 1 OF 1 SHEETS STA. \_\_\_\_\_ TO STA. \_\_\_\_\_

F.A.S. RTE.	SECTION	COUNTY	TOTAL SHEETS	SHEET NO.
1323	(102BR)I	KANKAKEE	7	4
CONTRACT NO. 66B34			ILLINOIS FED. AID PROJECT	



**BILL OF MATERIAL**

ITEM	UNIT	TOTAL
PERIMETER EROSION BARRIER	FEET	146
TEMPOARY FENCE	FEET	146

FILE NAME =	USER NAME = petaluj	DESIGNED - RQN_WOODSHANK	REVISED -
ct:\pwwork\pwwid\petaluj\d\268515\0366834-sht-details.DGN		DRAWN - RQN_WOODSHANK	REVISED -
	PLOT SCALE = 100.0094' / IN.	CHECKED -	REVISED -
	PLOT DATE = Apr 07, 2011 - 09:28:17 AM	DATE -	REVISED -

**STATE OF ILLINOIS  
DEPARTMENT OF TRANSPORTATION**

**WETLAND AREAS PROTECTION**

SCALE: \_\_\_\_\_ SHEET NO. 1 OF 1 SHEETS STA. \_\_\_\_\_ TO STA. \_\_\_\_\_

F.A.S. RTE.	SECTION	COUNTY	TOTAL SHEETS	SHEET NO.
1323	(102BR)I	KANKAKEE	7	5
ILLINOIS FED. AID PROJECT			CONTRACT NO. 66B34	

\* Contractor is to verify beam length prior to ordering material. Other sections meeting the section modulus requirements shown may be allowed subject to approval by the Bureau of Bridges and Structures. Maximum Girder depth = 21". No additional payment will be allowed if the contractor chooses a heavier steel section than the one specified in the plans. (Min.  $S_x = 140 \text{ in}^3$ )

Note A:  
 ☉ Transverse tie  $R$ 's (3 per span). Place additional shims at midpoints between tie  $R$ 's. Securely weld shims to top flange of support beam. Minimum shim size is 6" x flange width.

**GENERAL NOTES**

All structural steel shall conform to AASHTO Classification M-270 Gr. 36, unless otherwise noted.

Plan dimensions and details relative to existing plans are subject to nominal construction variations. The Contractor shall field verify existing dimensions and details affecting new construction and make necessary approved adjustments prior to construction or ordering of materials. Such variations shall not be cause for additional compensation for a change in scope of the work, however, the Contractor will be paid for the quantity actually furnished at the unit price bid for the work.

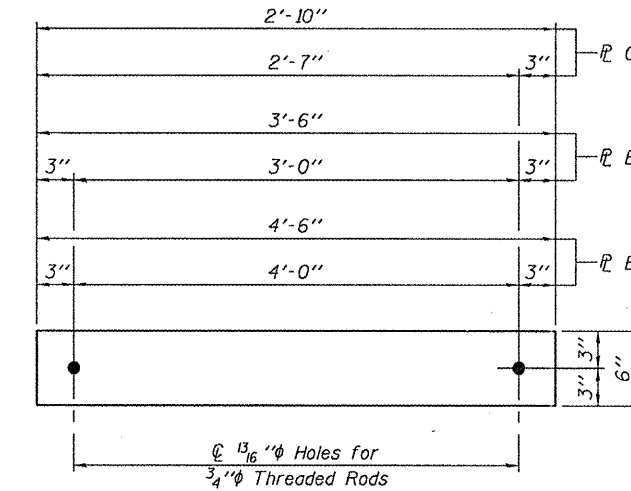
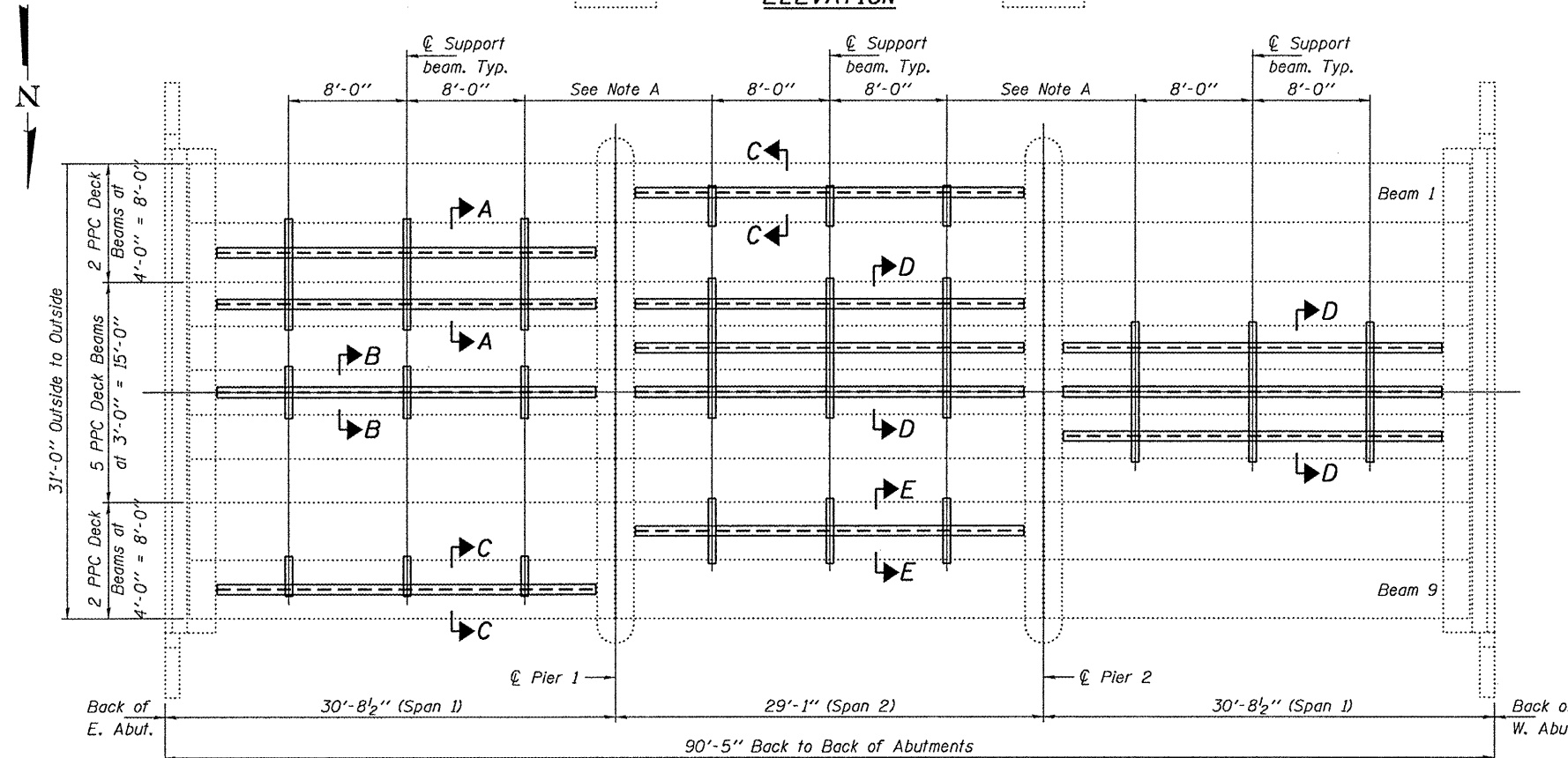
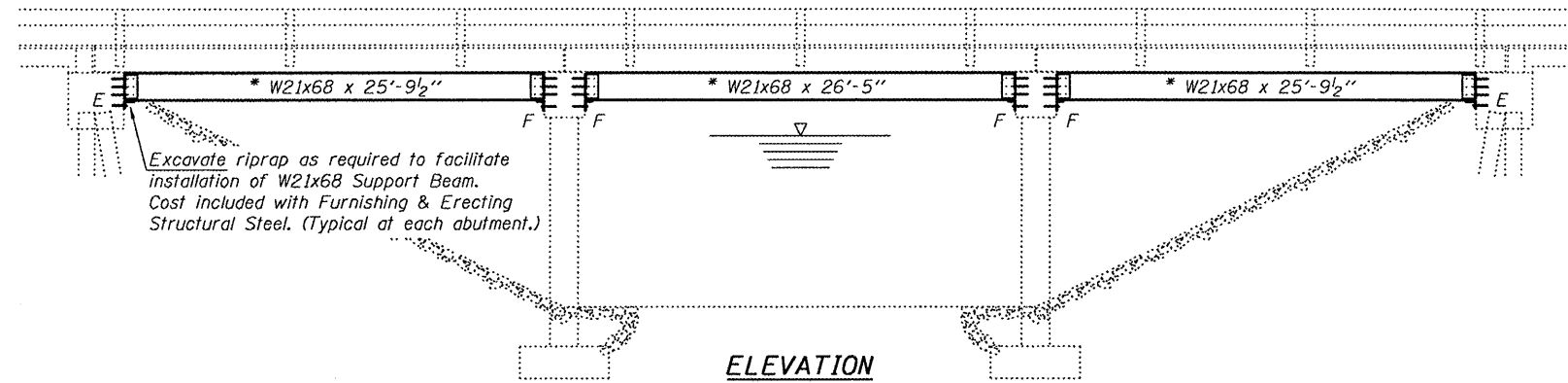
The contractor is advised that the existing PPC Deck Beams are in a deteriorated condition with reduced load carrying capacity. It is the contractor's responsibility to account for the condition of the beams when developing construction procedures.

See Section 584 of the Standard Specifications for Epoxy Grouting of Threaded Rods; Minimum embedment 9".

If the contractor's procedure for placement of beams involves placement of cranes or other heavy equipment on the bridge, a detailed procedure shall be submitted to the Engineer for approval. The procedure shall include calculations, prepared and sealed by an Illinois Licensed Structural Engineer, verifying that the equipment and procedure used will not overstress the existing beams. To distribute load to multiple beams and protect the existing surface, in all cases a double layer mat of heavy timbers shall be used at all times under crane tracks or wheels and any outriggers in the down position. If necessary, shims shall be used under the crane mat to ensure uniform contact with the underlying beams.

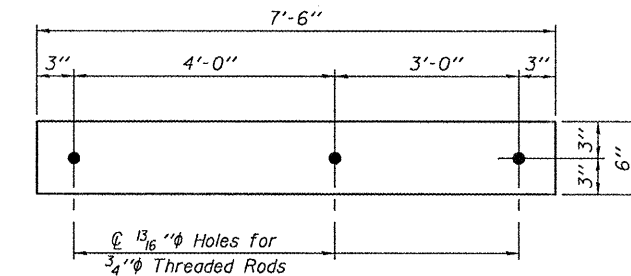
The cost of epoxy grouting threaded rods on the pier cap, abutments and beams shall be included with Furnishing and Erecting Structural Steel.

The Contractor has the option of using used steel. See Special Provisions.



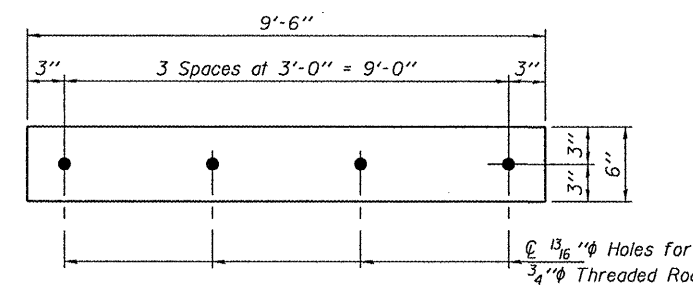
**TRANSVERSE TIE R'S B, C & E**

$R$  B  $1/2$ " x 3'-6" x 6" (3 Req'd)  
 $R$  C  $1/2$ " x 2'-10" x 6" (6 Req'd)  
 $R$  E  $1/2$ " x 4'-6" x 6" (3 Req'd)



**TRANSVERSE TIE R A**

$R$   $1/2$ " x 7'-6" x 6" (3 Req'd)

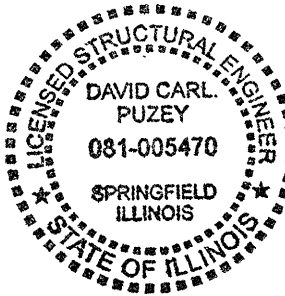


**TRANSVERSE TIE R D**

$R$   $1/2$ " x 9'-6" x 6" (6 Req'd)

**TOTAL BILL OF MATERIAL**

ITEM	UNIT	QUANTITY
Furnishing and Erecting Structural Steel	Pound	29680



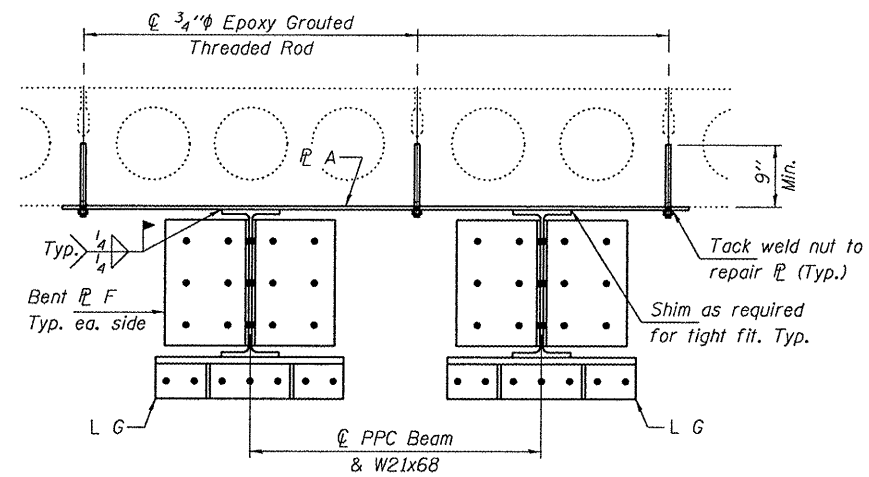
DESIGNED: <i>Alan J. Holloway</i>	EXAMINED: <i>Jon F. [Signature]</i>	DATE: APRIL 6, 2011
CHECKED: <i>[Signature]</i>	PASSED: <i>[Signature]</i>	
DRAWN: <i>[Signature]</i>		
CHECKED: <i>[Signature]</i>		

STATE OF ILLINOIS  
 DEPARTMENT OF TRANSPORTATION

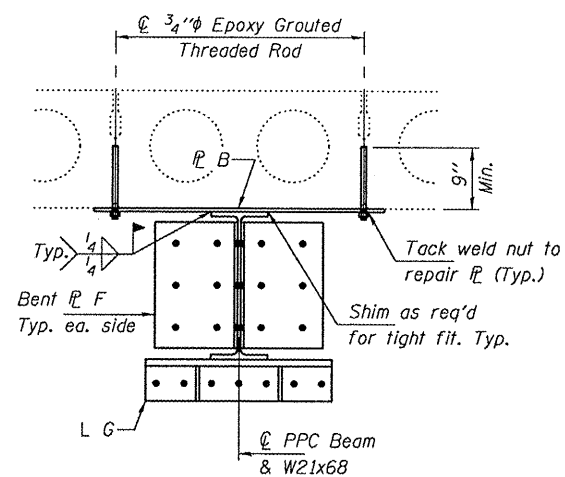
REPAIR DETAILS  
 FAS 1323 OVER WEST BRANCH OF HORSE CREEK  
 SN 046-0109

F.A.S. RTE. 1323	SECTION 1102BR1	COUNTY KANKAKEE	TOTAL SHEETS 7	SHEET NO. 6
CONTRACT NO. 66B34			ILLINOIS FED. AID PROJECT	

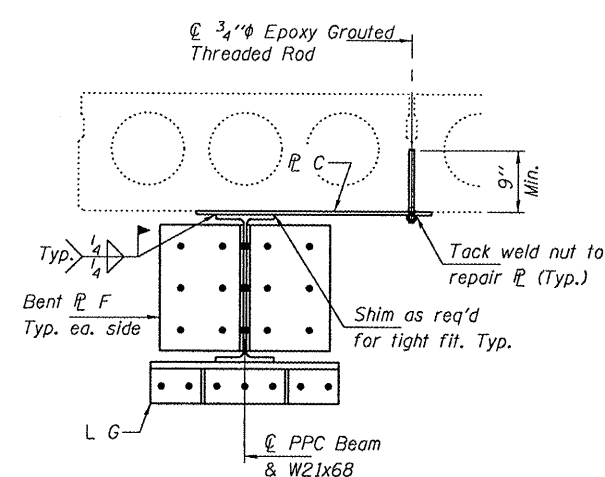
SHEET NO. 1 OF 2 SHEETS



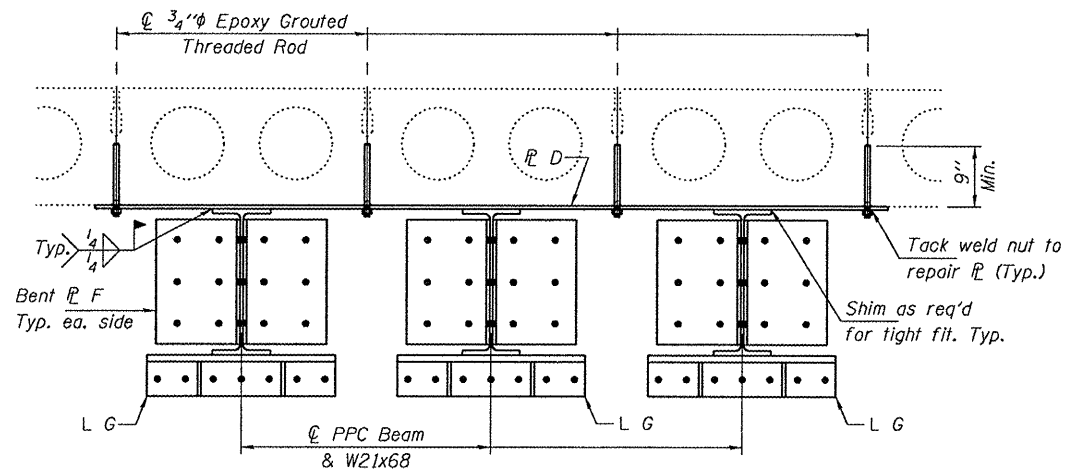
SECTION A-A



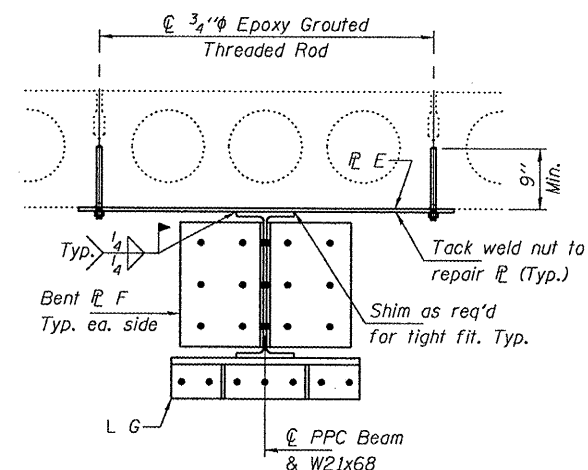
SECTION B-B



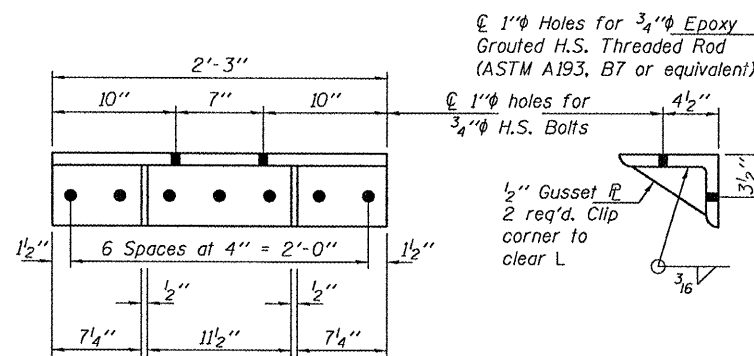
SECTION C-C



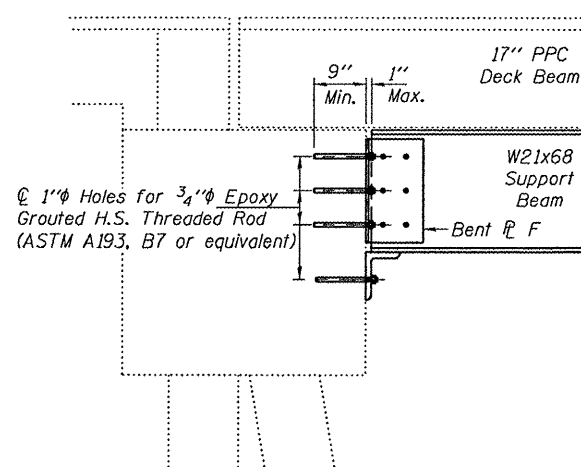
SECTION D-D



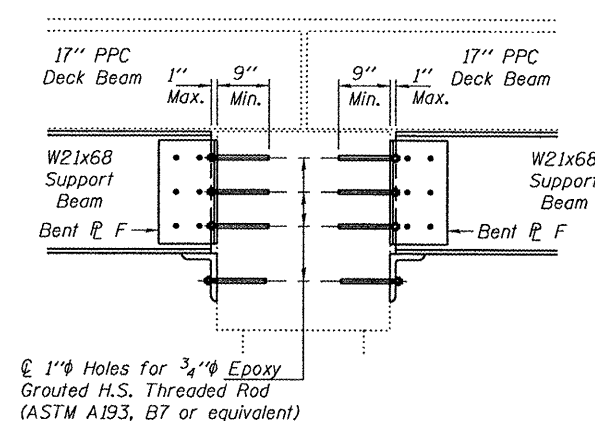
SECTION E-E



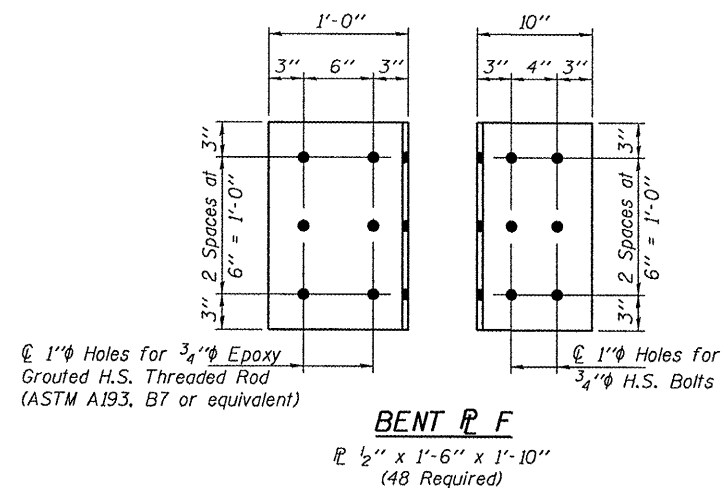
ANGLE G  
L8x6x1 x 2'-3"  
(24 Required)



TYPICAL SECTION THRU ABUTMENTS



TYPICAL SECTION THRU PIERS



BENT P F  
P 1/2" x 1'-6" x 1'-10"  
(48 Required)

DESIGNED ATH  
CHECKED GGE  
DRAWN balva  
CHECKED ATH GGE

EXAMINED *James F. [Signature]* DATE APRIL 6, 2011  
PASSED ACTING ENGINEER OF STRUCTURAL SERVICES  
ACTING ENGINEER OF BRIDGES AND STRUCTURES

STATE OF ILLINOIS  
DEPARTMENT OF TRANSPORTATION

P.P.C. DECK BEAM SUPPORT DETAILS  
SN 046-0109

F.A.S. RTE.	SECTION	COUNTY	TOTAL SHEETS	SHEET NO.
1323	(102BR)	KANKAKEE	7	7
			CONTRACT NO. 66B34	
ILLINOIS FED. AID PROJECT				

SHEET NO. 2 OF 2 SHEETS