

INDEX OF SHEETS

1. COVER SHEET
2. GENERAL NOTES
3. SUMMARY OF QUANTITIES
4. TYPICAL SECTION
5. SCHEDULES
6. PLAN DETAILS
7. CLASS B PATCHING DETAILS
8. URBAN PAVEMENT MARKING

STANDARDS

- | | |
|-----------|--|
| 000001-06 | STANDARD SYMBOLS, ABBREVIATIONS AND PATTERNS |
| 001006 | DECIMAL OF AN INCH AND OF A FOOT |
| 424001-05 | CURB RAMPS FOR SIDEWALK |
| 701001-02 | OFF-ROAD OPERATIONS 2L, 2W, MORE THAN 15' (4.5 m) AWAY |
| 701006-03 | OFF-ROAD OPERATIONS 2L, 2W, 15' (4.5 m) TO 24" (600 mm) FROM PAVEMENT EDGE |
| 701301-04 | LANE CLOSURE, 2L, 2W, SHORT TIME OPERATIONS |
| 701311-03 | LANE CLOSURE, 2L, 2W, MOVING OPERATIONS - DAY ONLY |
| 701501-06 | URBAN LANE CLOSURE, 2L, 2W, UNDIVIDED |
| 701901-01 | TRAFFIC CONTROL DEVICES |

STATE OF ILLINOIS
DEPARTMENT OF TRANSPORTATION
DIVISION OF HIGHWAYS
**PROPOSED
HIGHWAY PLANS**

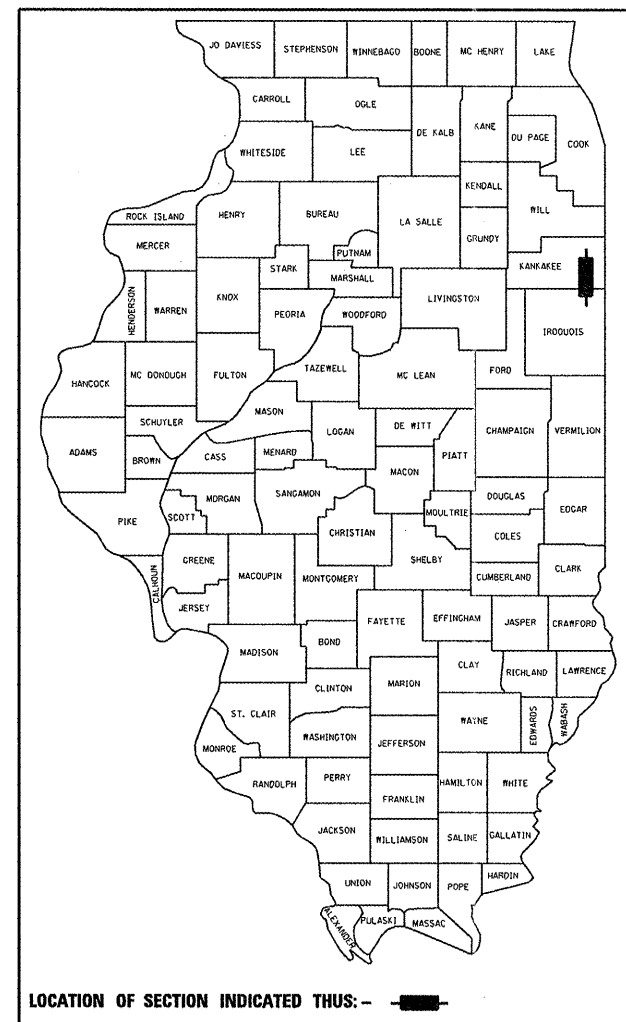
**FAP ROUTE 332 (IL 1)
SECTION (K,5)I-1**

**PAVEMENT PATCHING
KANKAKEE COUNTY**

C-93-105-11

F.A.P. RTE.	SECTION	COUNTY	TOTAL SHEETS	SHEET NO.
332	(K,5)I-1	KANKAKEE	8	1
		ILLINOIS	CONTRACT NO. 66B35	

D-93-002-11



LOCATION OF SECTION INDICATED THUS: - [black rectangle] -

OTHER PRINCIPAL ARTERIAL

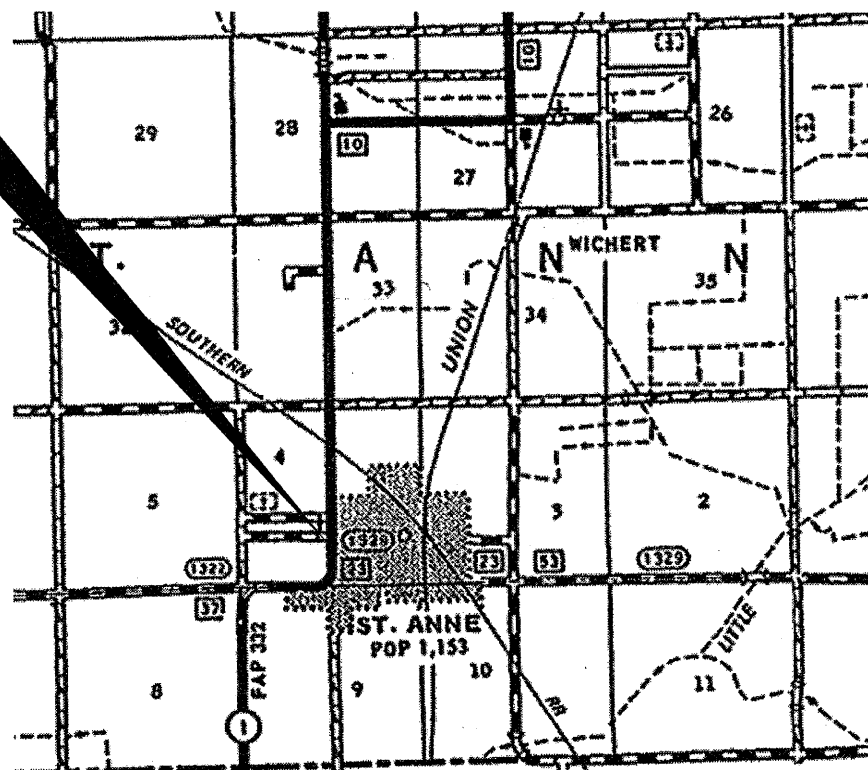
FAP RTE. 332 (IL 1)

2009

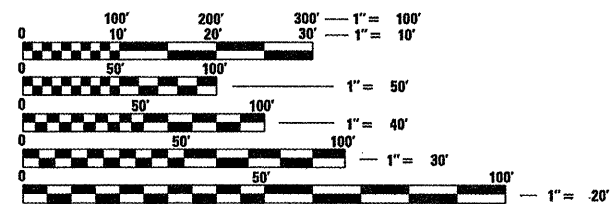
ADT	4800
P.V.	92.35%
S.U.	4.59%
M.U.	3.06%

PROJECT LOCATION

ST. ANNE
STA. 336+31 TO STA. 380+42
INTERMITTEN PAVEMENT PATCHING



GROSS LENGTH = 1411 FT. = 0.27MILE
NET LENGTH = 115 FT. = 0.02 MILE



FULL SIZE PLANS HAVE BEEN PREPARED USING STANDARD ENGINEERING SCALES. REDUCED SIZED PLANS WILL NOT CONFORM TO STANDARD SCALES. IN MAKING MEASUREMENTS ON REDUCED PLANS, THE ABOVE SCALES MAY BE USED.

J.U.L.I.E.
JOINT UTILITY LOCATION INFORMATION FOR EXCAVATION
1-800-892-0123
OR 811

PROJECT ENGINEER: JOE KANNEL P.E.
UNIT CHIEF: RON WOODSHANK
TOWNSHIP: ST. ANNE
CONTRACT NO. 66B35

STATE OF ILLINOIS
DEPARTMENT OF TRANSPORTATION
DIVISION OF HIGHWAYS

SUBMITTED 4/7/2011
Eric S. Theodorakopoulos
DEPUTY DIRECTOR OF HIGHWAYS, REGION ENGINEER

May 13 2011
Scott E. Stitt, P.E.
acting ENGINEER OF DESIGN AND ENVIRONMENT

May 13 2011
Christine M. Reed
DIRECTOR OF HIGHWAYS, CHIEF ENGINEER

**PRINTED BY THE AUTHORITY
OF THE STATE OF ILLINOIS**