

F.A.P. RTE.	SECTION	COUNTY	TOTAL SHEETS	SHEET NO.
332	(K,5)I-1	KANKAKEE	8	1
		ILLINOIS	CONTRACT NO. 66B35	

**INDEX OF SHEETS**

1. COVER SHEET
2. GENERAL NOTES
3. SUMMARY OF QUANTITIES
4. TYPICAL SECTION
5. SCHEDULES
6. PLAN DETAILS
7. CLASS B PATCHING DETAILS
8. URBAN PAVEMENT MARKING

**STANDARDS**

- |           |  |
|-----------|--|
| 000001-06 | STANDARD SYMBOLS, ABBREVIATIONS AND PATTERNS                               |
| 001006    | DECIMAL OF AN INCH AND OF A FOOT   |
| 424001-05 | CURB RAMPS FOR SIDEWALK  |
| 701001-02 | OFF-ROAD OPERATIONS 2L, 2W, MORE THAN 15' (4.5 m) AWAY                     |
| 701006-03 | OFF-ROAD OPERATIONS 2L, 2W, 15' (4.5 m) TO 24" (600 mm) FROM PAVEMENT EDGE |
| 701301-04 | LANE CLOSURE, 2L, 2W, SHORT TIME OPERATIONS                                |
| 701311-03 | LANE CLOSURE, 2L, 2W, MOVING OPERATIONS - DAY ONLY                         |
| 701501-06 | URBAN LANE CLOSURE, 2L, 2W, UNDIVIDED                                      |
| 701901-01 | TRAFFIC CONTROL DEVICES  |

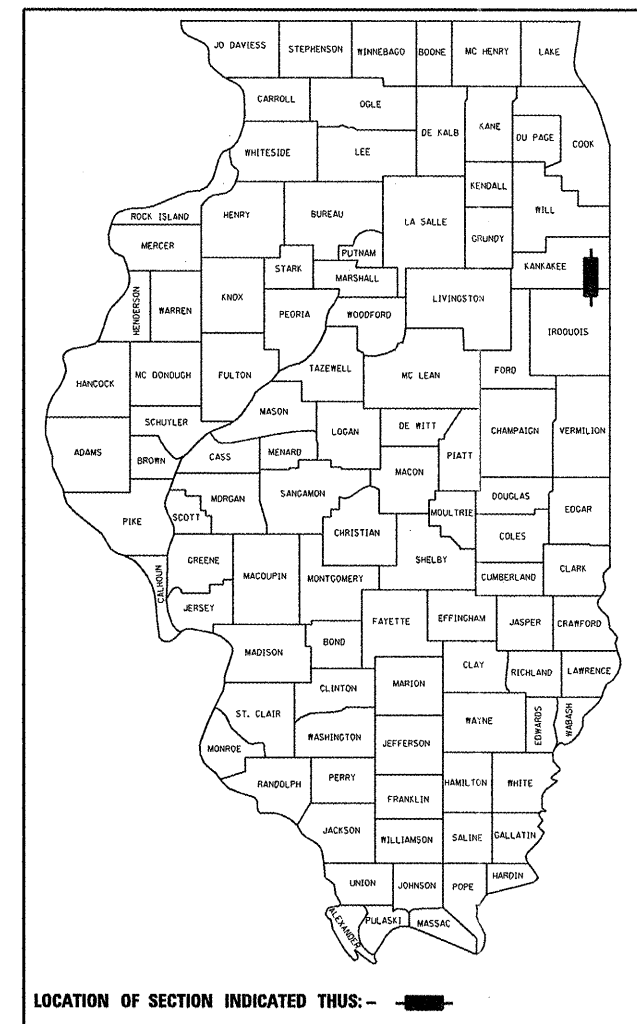
**STATE OF ILLINOIS**  
**DEPARTMENT OF TRANSPORTATION**  
**DIVISION OF HIGHWAYS**  
**PROPOSED**  
**HIGHWAY PLANS**

**FAP ROUTE 332 (IL 1)**  
**SECTION (K,5)I-1**

**PAVEMENT PATCHING**  
**KANKAKEE COUNTY**

C-93-105-11

D-93-002-11



LOCATION OF SECTION INDICATED THUS: - [black rectangle] -

**OTHER PRINCIPAL ARTERIAL**

FAP RTE. 332 (IL 1)

2009

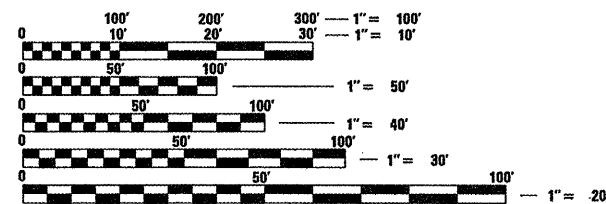
ADT	4800
P.V.	92.35%
S.U.	4.59%
M.U.	3.06%

STATE OF ILLINOIS  
DEPARTMENT OF TRANSPORTATION  
DIVISION OF HIGHWAYS

SUBMITTED 4/7/ 20 11  
Eric S. Theodorakopoulos  
DEPUTY DIRECTOR OF HIGHWAYS, REGION ENGINEER  
May 13 20 11  
Scott E. Stitt P.E.  
acting ENGINEER OF DESIGN AND ENVIRONMENT  
May 13 20 11  
Christine M. Reed  
DIRECTOR OF HIGHWAYS, CHIEF ENGINEER

**PROJECT LOCATION**

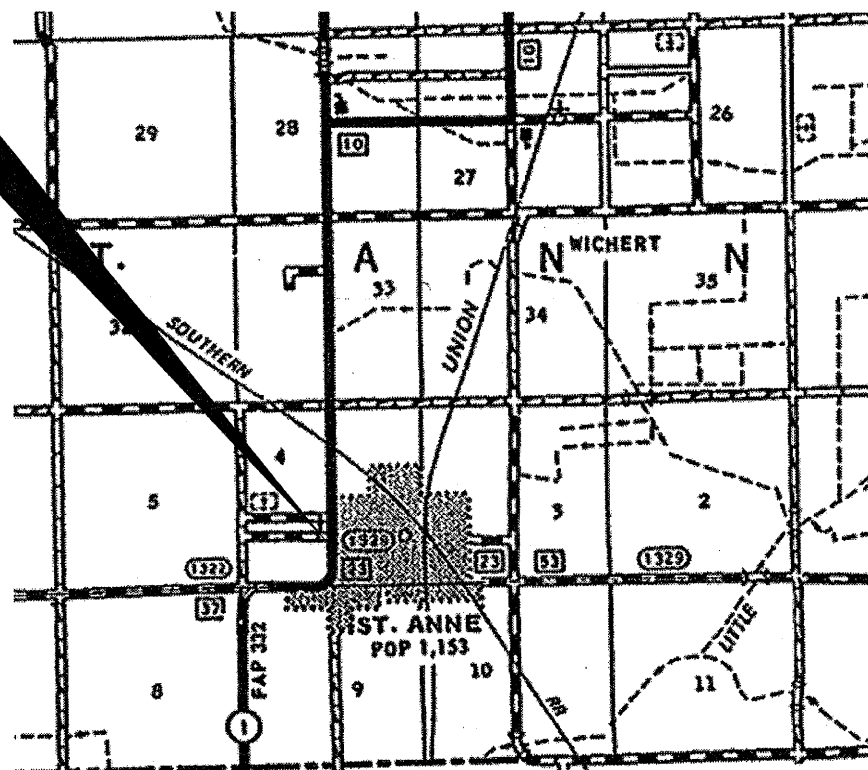
ST. ANNE  
STA. 336+31 TO STA. 380+42  
INTERMITTEN PAVEMENT PATCHING



FULL SIZE PLANS HAVE BEEN PREPARED USING STANDARD ENGINEERING SCALES. REDUCED SIZED PLANS WILL NOT CONFORM TO STANDARD SCALES. IN MAKING MEASUREMENTS ON REDUCED PLANS, THE ABOVE SCALES MAY BE USED.

J.U.L.I.E.  
JOINT UTILITY LOCATION INFORMATION FOR EXCAVATION  
1-800-892-0123  
OR 811

**PROJECT ENGINEER: JOE KANNEL P.E.**  
**UNIT CHIEF: RON WOODSHANK**  
**TOWNSHIP: ST. ANNE**  
**CONTRACT NO. 66B35**



GROSS LENGTH = 1411 FT. = 0.27 MILE  
NET LENGTH = 115 FT. = 0.02 MILE

**PRINTED BY THE AUTHORITY**  
**OF THE STATE OF ILLINOIS**

**GENERAL NOTES**

PLAN DIMENSIONS AND DETAILS RELATIVE TO EXISTING PLANS ARE SUBJECT TO NOMINAL CONSTRUCTION VARIATIONS. THE CONTRACTOR SHALL FIELD VERIFY EXISTING DIMENSIONS AND DETAILS AFFECTING NEW CONSTRUCTION AND MAKE NECESSARY APPROVED ADJUSTMENTS PRIOR TO CONSTRUCTION OR ORDERING OF MATERIALS. SUCH VARIATIONS SHALL NOT BE CAUSE FOR ADDITIONAL COMPENSATION FOR A CHANGE IN SCOPE OF WORK; HOWEVER, THE CONTRACTOR WILL BE PAID FOR THE QUANTITY ACTUALLY FURNISHED AT THE UNIT PRICE BID FOR THE WORK.

THE THICKNESS OF HMA SHOWN ON THE PLANS IS THE NOMINAL THICKNESS. DEVIATIONS FROM THE NOMINAL THICKNESS WILL BE PERMITTED WHEN SUCH DEVIATIONS OCCUR DUE TO IRREGULARITIES IN THE EXISTING SURFACE OR BASE ON WHICH THE HMA IS PLACED.

FOR STABILIZATION, ALL TYPE III BARRICADES SHALL REQUIRE A MINIMUM OF FOUR SAND BAGS PER BARRICADE.

ABANDONED UNDERGROUND UTILITIES THAT CONFLICT WITH CONSTRUCTION SHALL BE DISPOSED OF OUTSIDE THE LIMITS OF THE RIGHT OF WAY ACCORDING TO ARTICLE 202.03 OF THE STANDARD SPECIFICATIONS AND AS DIRECTED BY THE ENGINEER. THIS WORK WILL NOT BE PAID FOR SEPARATELY BUT SHALL BE INCLUDED IN THE COST OF THE CLASS OF PATCHING SPECIFIED.

ANY REFERENCE TO A STANDARD IN THESE PLANS SHALL BE INTERPRETED TO MEAN THE EDITION AS INDICATED BY THE SUBNUMBER SHOWN IN THE LIST OF STANDARDS OR THE COPY INCLUDED IN THESE PLANS.

THE CONTRACTOR SHALL CONTACT JULIE AT LEAST 48 HOURS PRIOR TO EXCAVATION TO DETERMINE WHICH UTILITIES ARE IN THE AREA.

**COMMITMENTS**

NONE 03/17/2011

DATE: 4/7/2011

PREPARED BY: *Dave Broviak*  
DISTRICT STUDIES & PLANS ENGINEER

EXAMINED BY: *[Signature]*  
DISTRICT CONSTRUCTION ENGINEER

*Wayne L. Phillips*  
DISTRICT MATERIALS ENGINEER

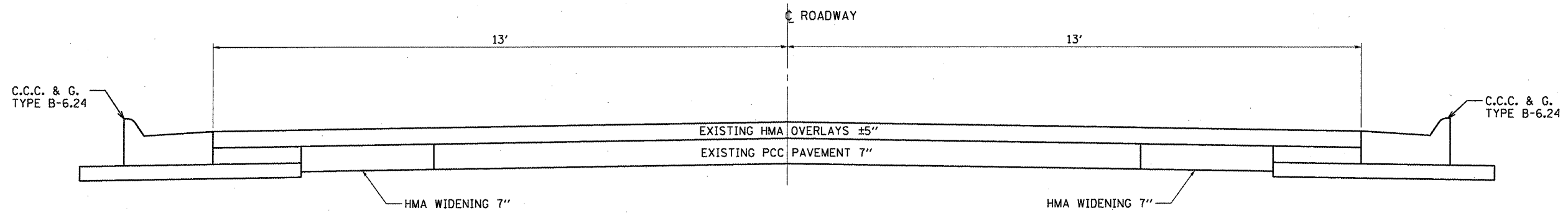
*Bruce A. Huelser*  
DISTRICT OPERATIONS ENGINEER

FILE NAME =	USER NAME = patelij	DESIGNED - RON WOODSHANK	REVISED -	<b>STATE OF ILLINOIS DEPARTMENT OF TRANSPORTATION</b>	<b>GENERAL NOTES</b>	F.A.P. RTE.	SECTION	COUNTY	TOTAL SHEETS	SHEET NO.
ci\pw_work\pwidot\patelij\10259563\0366835-sht-details.DGN	DRAWN - RON WOODSHANK	REVISED -	332			(K,5)-1	KANKAKEE	8	2	
PLOT SCALE = 99.9849 ' / IN.	CHECKED -	REVISED -	CONTRACT NO. 66B35							
PLOT DATE = Apr 07, 2011 - 10:27:58 AM	DATE -	REVISED -	ILLINOIS FED. AID PROJECT							
				SCALE: _____ SHEET NO. 1 OF 1 SHEETS STA. _____ TO STA. _____						

CODE NO.	ITEM	UNIT	TOTAL QUANTITY	CONSTR. CODE
				STATE FUNDS 100% STATE ROADWAY 0005
42400100	PORTLAND CEMENT CONCRETE SIDEWALK 4 INCH	SQ FT	103	103
42400800	DETECTABLE WARNINGS	SQ FT	8	8
44000600	SIDEWALK REMOVAL	SQ FT	103	103
44000500	COMBINATION CURB AND GUTTER REMOVAL	FOOT	10	10
60605100	COMBINATION CONCRETE CURB AND GUTTER, TYPE B-6.24 (ABUTTING EXISTING PAVEMENT)	FOOT	10	10
44200998	CLASS B PATCHES, TYPE III, 12 INCH	SQ YD	25	25
44201000	CLASS B PATCHES, TYPE IV, 12 INCH	SQ YD	181	181
44201298	DOWEL BARS 1 1/4"	EACH	116	116
44213100	PAVEMENT FABRIC	SQ YD	411	411
44213200	SAW CUTS	FOOT	543	543
44213204	TIE BARS 3/4"	EACH	98	98
67100100	MOBILIZATION	L SUM	1	1
70102620	TRAFFIC CONTROL AND PROTECTION, STANDARD 701501	L SUM	1	1
* 78005110	EPOXY PAVEMENT MARKING - LINE 4"	FOOT	116	116
* 78005130	EPOXY PAVEMENT MARKING - LINE 6"	FOOT	20	20
X5011100	FOUNDATION REMOVAL	EACH	1	1

\*SPECIALITY ITEMS

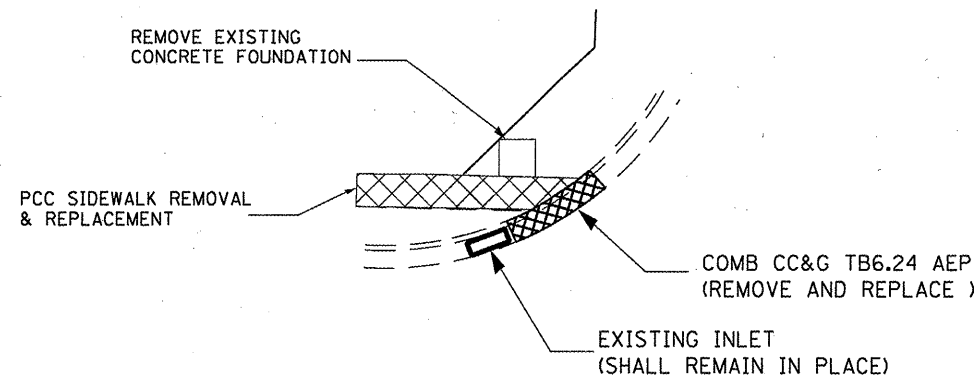
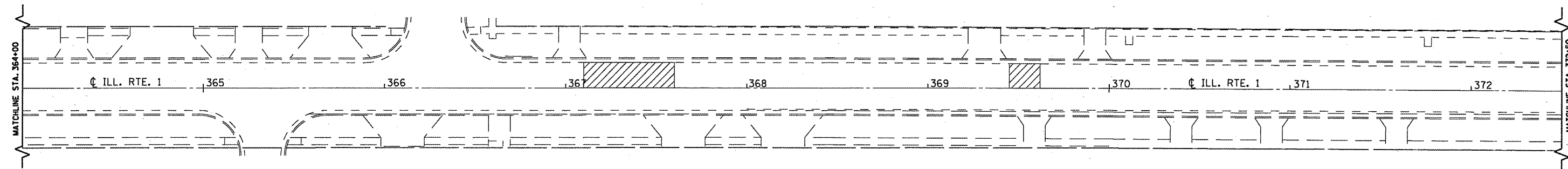
Rev.



FILE NAME =	USER NAME = patelj	DESIGNED - RON WOODSHANK	REVISED -	<b>STATE OF ILLINOIS DEPARTMENT OF TRANSPORTATION</b>	<b>TYPICAL SECTION</b>	F.A.P. RTE.	SECTION	COUNTY	TOTAL SHEETS	SHEET NO.
cr\pw\work\p\widoc\patelj\10259563\0366835-sht-details.DGN	DRAWN - RON WOODSHANK	REVISED -	332			(K,5)1-1	KANKAKEE	8	4	
PLOT SCALE = 100.0099' / IN.	CHECKED -	REVISED -	CONTRACT NO. 66B35							
PLOT DATE = Apr 07, 2011 - 09:44:56 AM	DATE -	REVISED -	ILLINOIS FED. AID PROJECT							
				SCALE: _____	SHEET NO. 1 OF 1 SHEETS	STA. _____	TO STA. _____			

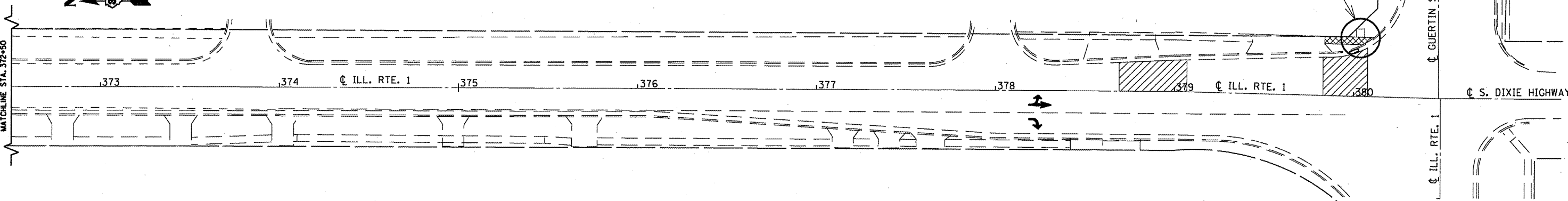
PATCHING SCHEDULE

LOCATION				NORTHBOUND LANE						
				HMA REMOVAL OVER PATCHES	CLASS B PATCHING		DOWEL BARS	SAW CUTS	PAVE'T FABRIC	TIE BARS
				SQ YD	SQ YD	SQ YD	EACH	FOOT	SQ YD	EACH
STA. 366+95	TO	STA. 367+35	LT	9		58	22	159	116	40
STA. 369+45	TO	STA. 369+62	LT	13	25		22	90	49	
STA. 378+69	TO	STA. 379+07	LT	72		72	30	165	144	38
STA. 379+83	TO	STA. 380+03	LT	51		51	42	129	102	20
TOTALS				123	25	181	116	543	411	98



**DETAIL A**

- CLASS B PATCHING**
- PCC SIDEWALK REMOVAL & REPLACEMENT**
- COMB CC&G TB6.24 AEP REMOVAL AND REPLACEMENT**



**DETAIL A**

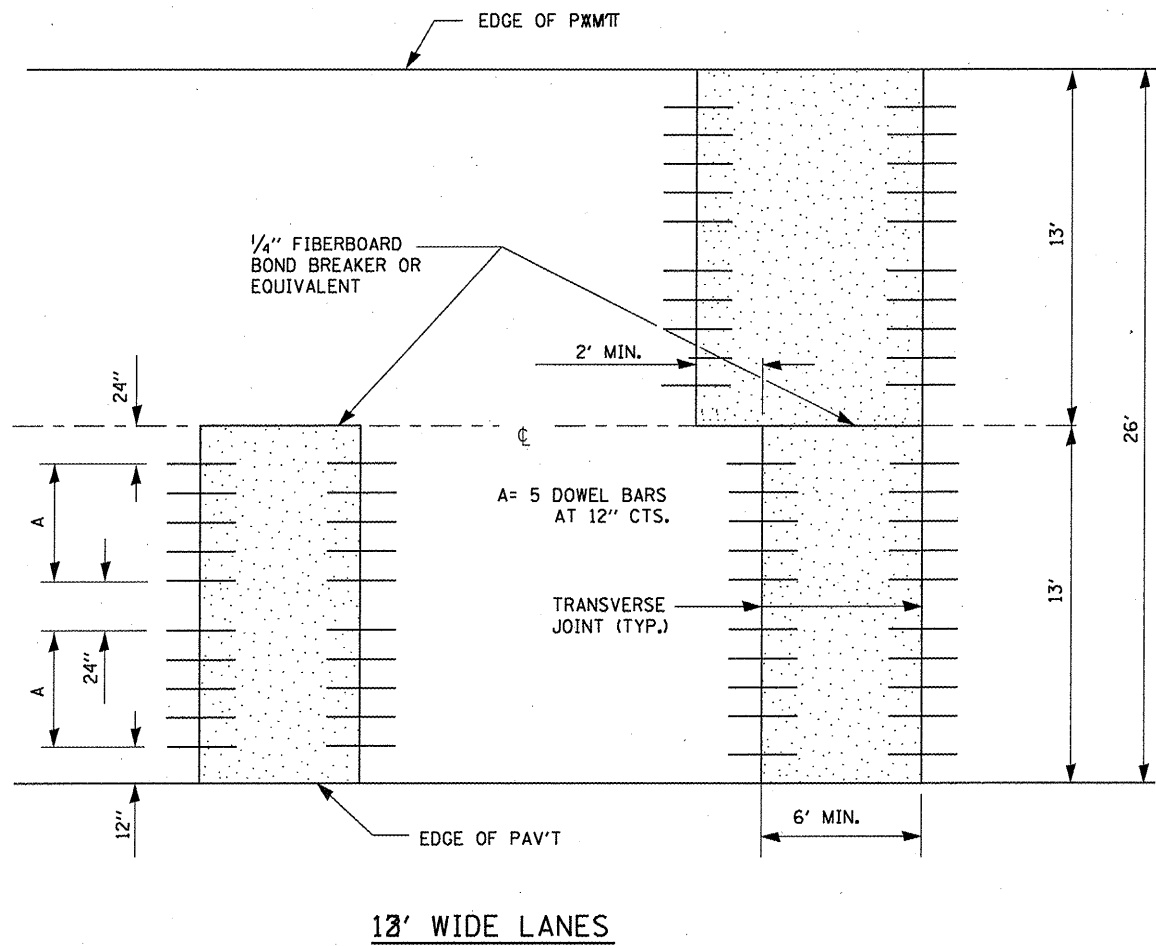
FILE NAME =	USER NAME = poteluj	DESIGNED - RQN WOODSHANK	REVISED -
ct:\pw-work\pwidot\poteluj\d0259563\0366835-sht-details.DGN		DRAWN - RQN WOODSHANK	REVISED -
	PLOT SCALE = 100.0099' / IN.	CHECKED -	REVISED -
	PLOT DATE = Apr 07, 2011 - 09:45:40 AM	DATE -	REVISED -

**STATE OF ILLINOIS  
DEPARTMENT OF TRANSPORTATION**

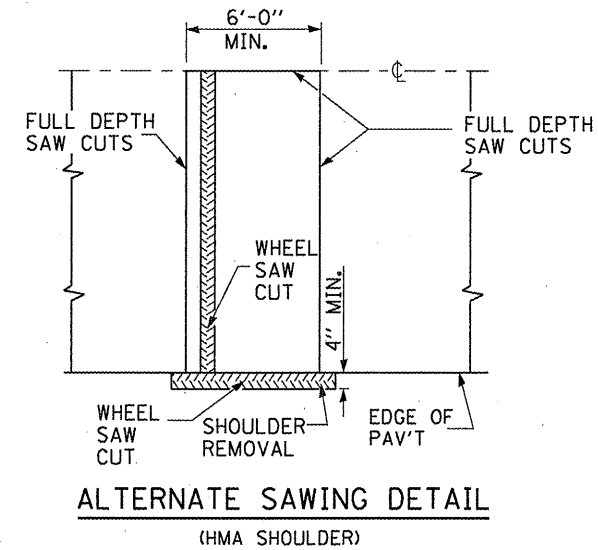
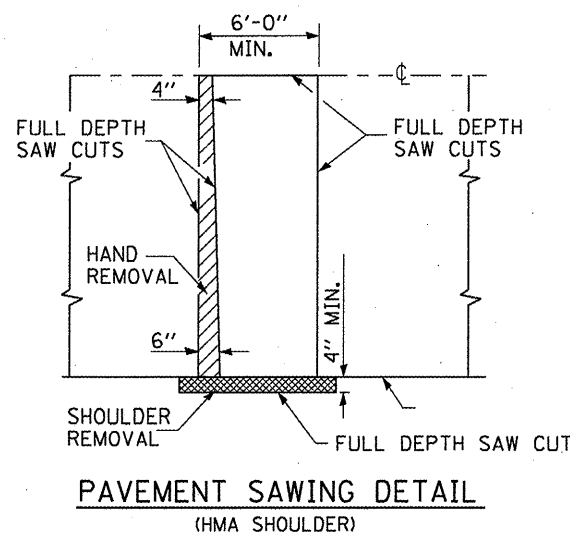
**PLAN DETAILS**

SCALE: _____	SHEET NO. 1 OF 2 SHEETS	STA. _____ TO STA. _____
--------------	-------------------------	--------------------------

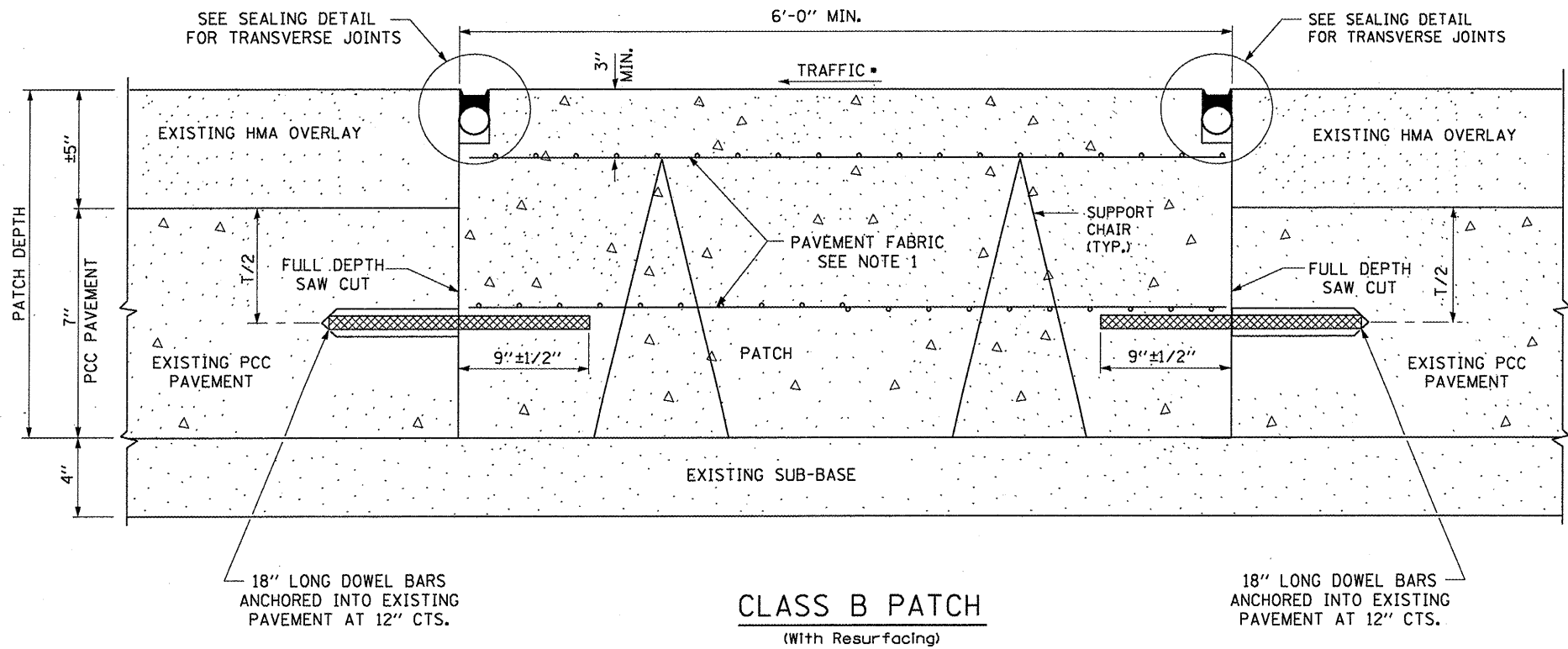
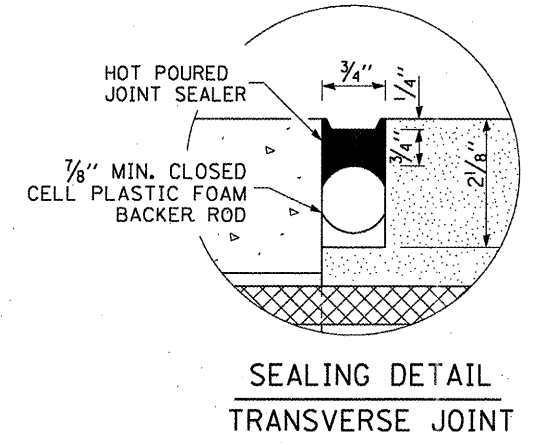
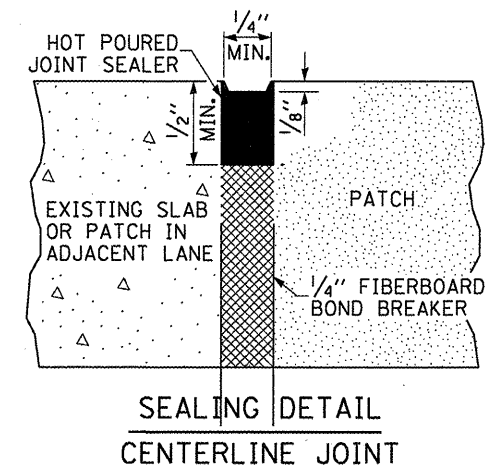
F.A.P. RTE.	SECTION	COUNTY	TOTAL SHEETS	SHEET NO.
332	(K,5)1-1	KANKAKEE	8	6
CONTRACT NO. 66B35				
ILLINOIS FED. AID PROJECT				



13' WIDE LANES



DOWEL BAR TABLE		
PAVEMENT THICKNESS	DOWEL BAR DIAMETER	HOLE DIAMETER
8" OR GREATER	1 1/2"	1 5/8"
7" THRU 7.99"	1 1/4"	1 3/8"
LESS THAN 7"	1"	1 1/8"



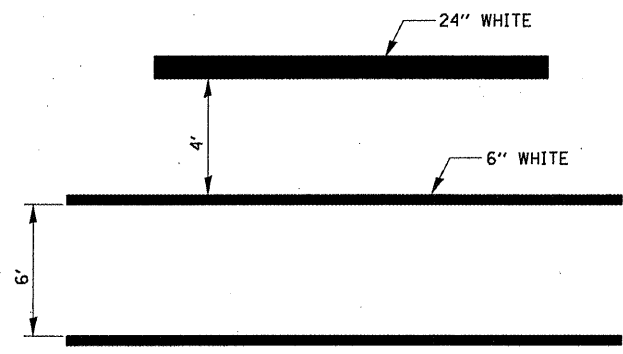
**GENERAL NOTES**

THE TRANSVERSE JOINTS FOR CLASS B PATCHES SHALL ALIGN WITH JOINTS OR CRACKS IN THE ADJACENT LANE WHENEVER POSSIBLE.

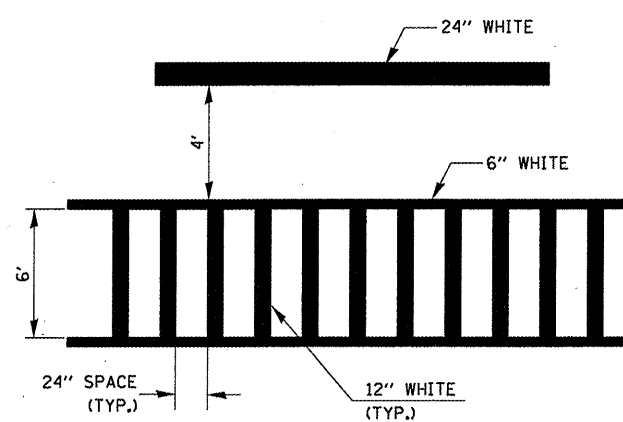
SEE STANDARD 420701 FOR DETAILS OF PAVEMENT FABRIC.

**NOTE 1:**

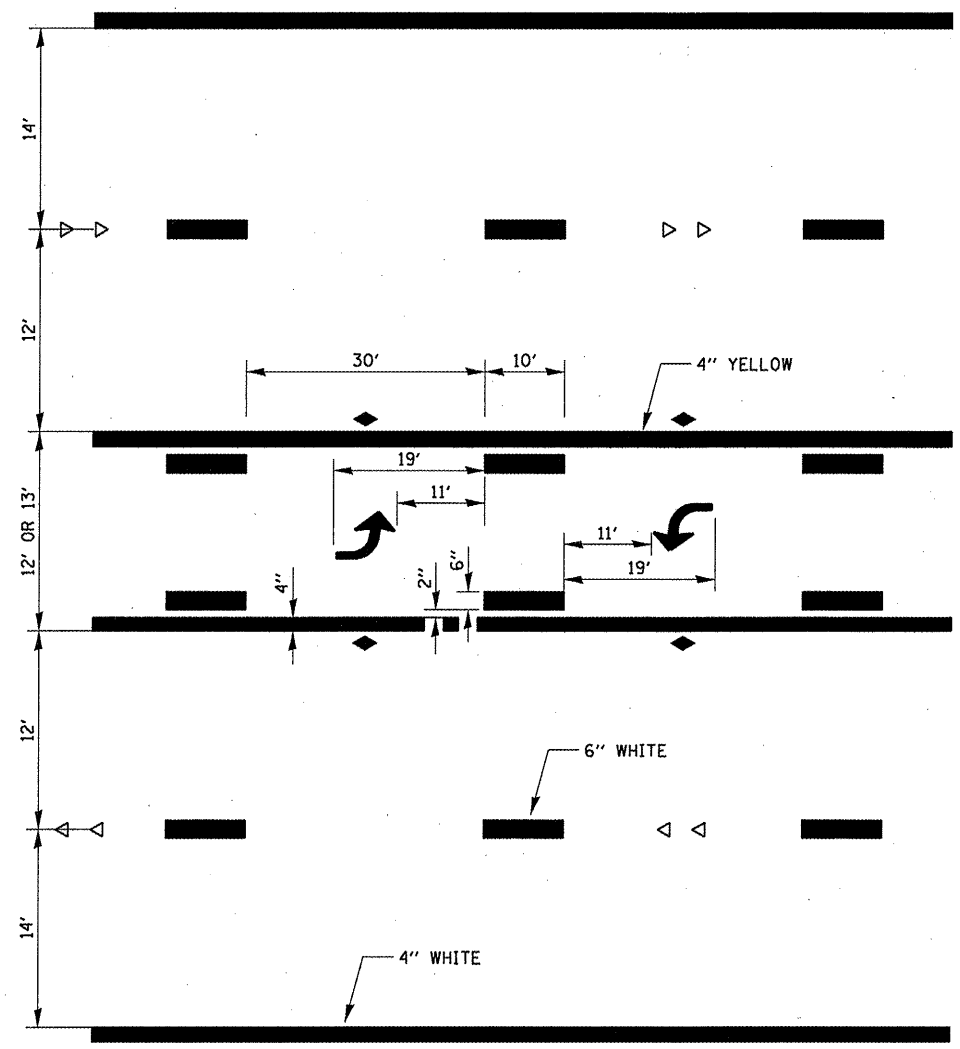
TWO LAYERS OF PAVEMENT FABRIC AS SHOWN SHALL BE REQUIRED FOR TYPE II, TYPE III AND TYPE IV CLASS B PATCHES



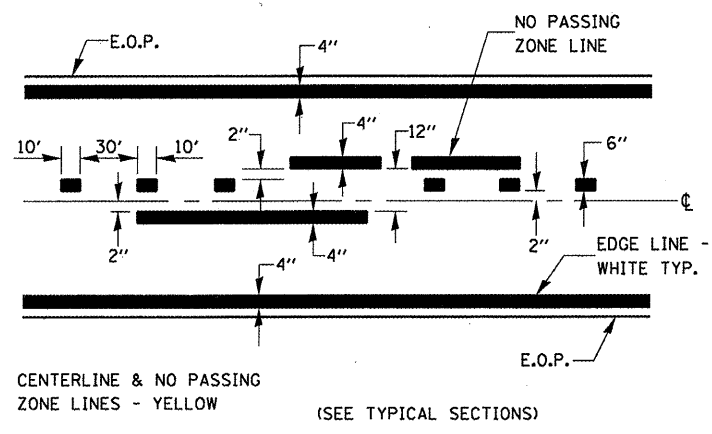
**TYPICAL SPACING DETAIL FOR CROSSWALKS AND STOP BARS**



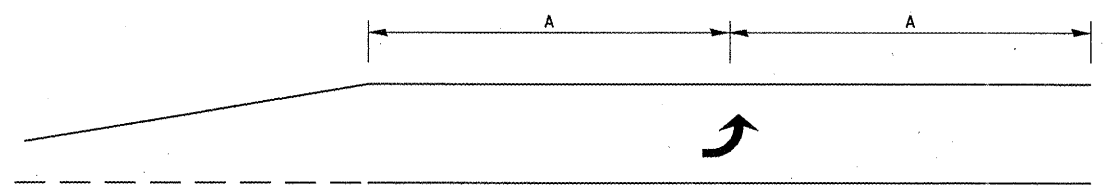
**TYPICAL SPACING DETAIL FOR CROSSWALKS AND STOP BARS**



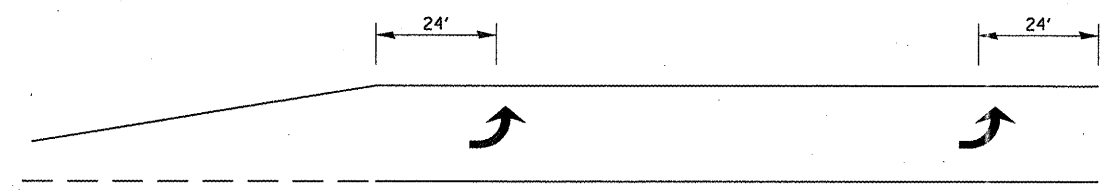
**TYPICAL APPLICATION @ TWO WAY LEFT TURN LANE (TWLTL)**



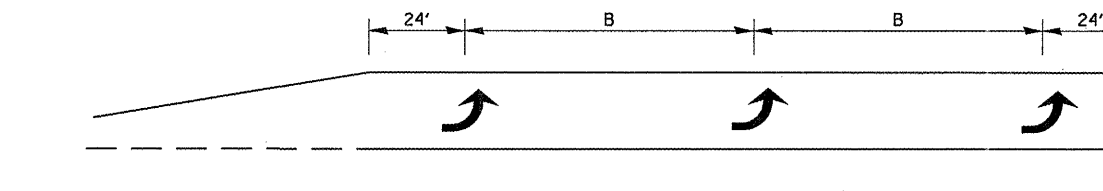
**PAVEMENT MARKING**



**99' AND UNDER**



**100' TO 149'**



**150' AND LONGER**

**TYPICAL PLACEMENT OF ARROWS IN TURN LANES**

FILE NAME =	USER NAME = petelyj	DESIGNED - RON WOODSHANK	REVISED -	<b>STATE OF ILLINOIS DEPARTMENT OF TRANSPORTATION</b>	<b>URBAN PAVEMENT MARKING</b>	F.A.P. RTE.	SECTION	COUNTY	TOTAL SHEETS	SHEET NO.	
cr:\pw\work\pwidot\petelyj\0259563\036835-shd-details.DGN	PLOT SCALE = 1/8" = 1' IN.	DRAWN - RON WOODSHANK	REVISED -			332	(K,5)1-1	KANKAKEE	8	8	
PLOT DATE = Apr 07, 2011 - 09:46:27 AM	DATE -	CHECKED -	REVISED -			SCALE: _____ SHEET NO. 1 OF 1 SHEETS STA. _____ TO STA. _____		CONTRACT NO. 66B35			
						ILLINOIS FED. AID PROJECT					