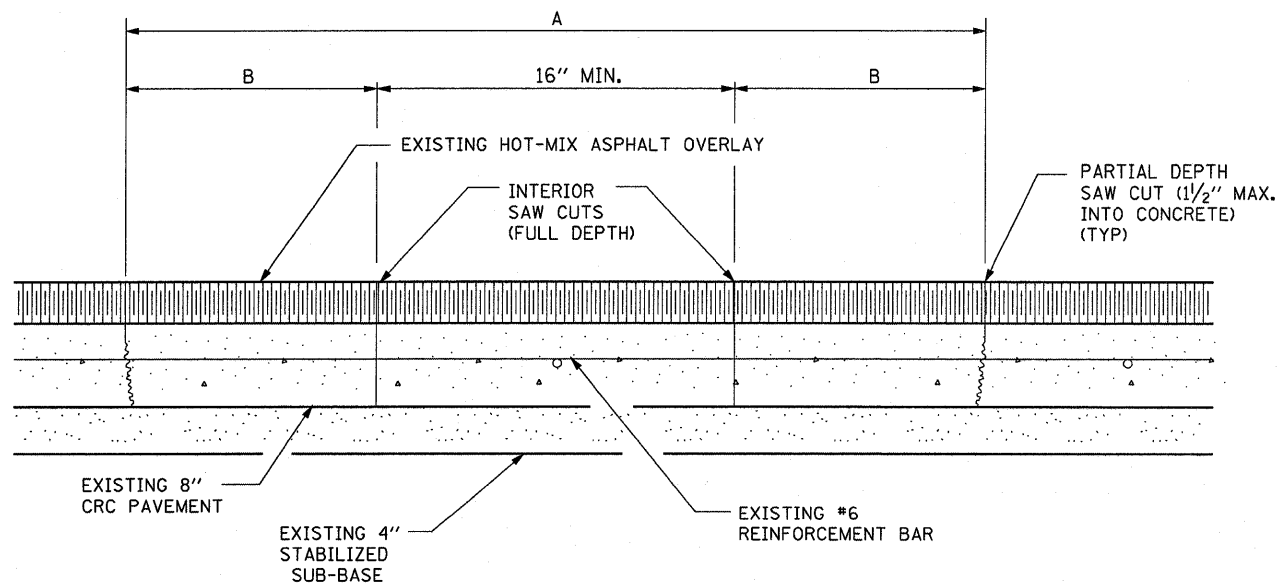
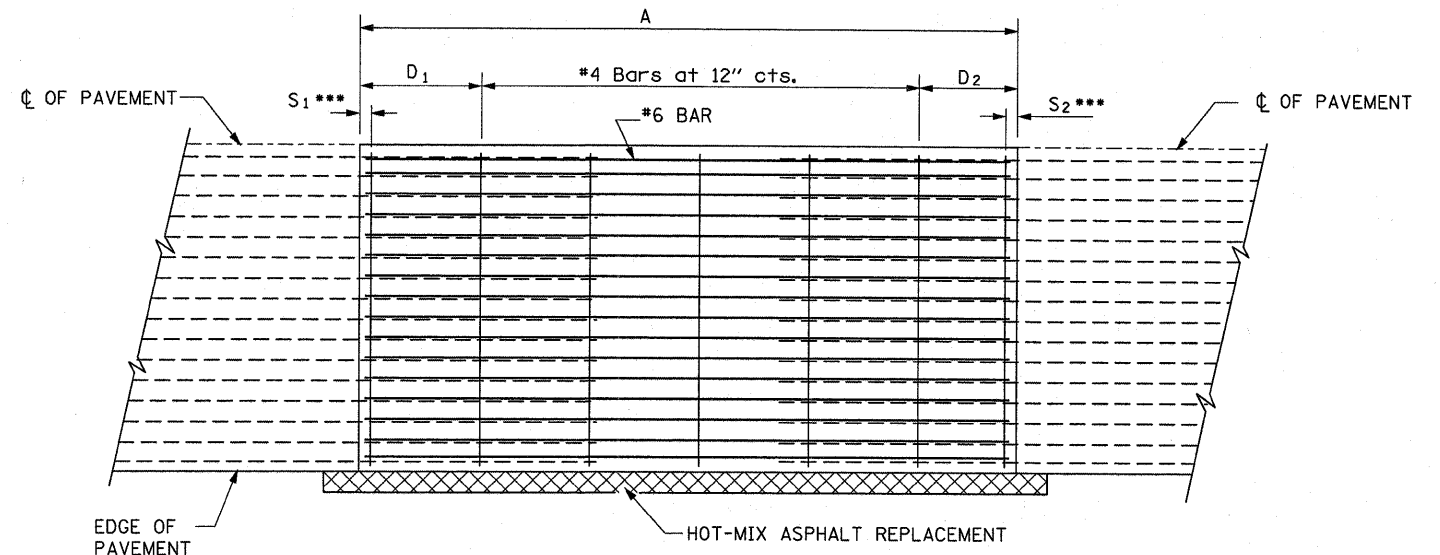


EXISTING PAVEMENT SAWING DETAIL
(AGAINST BITUMINOUS SHOULDER)

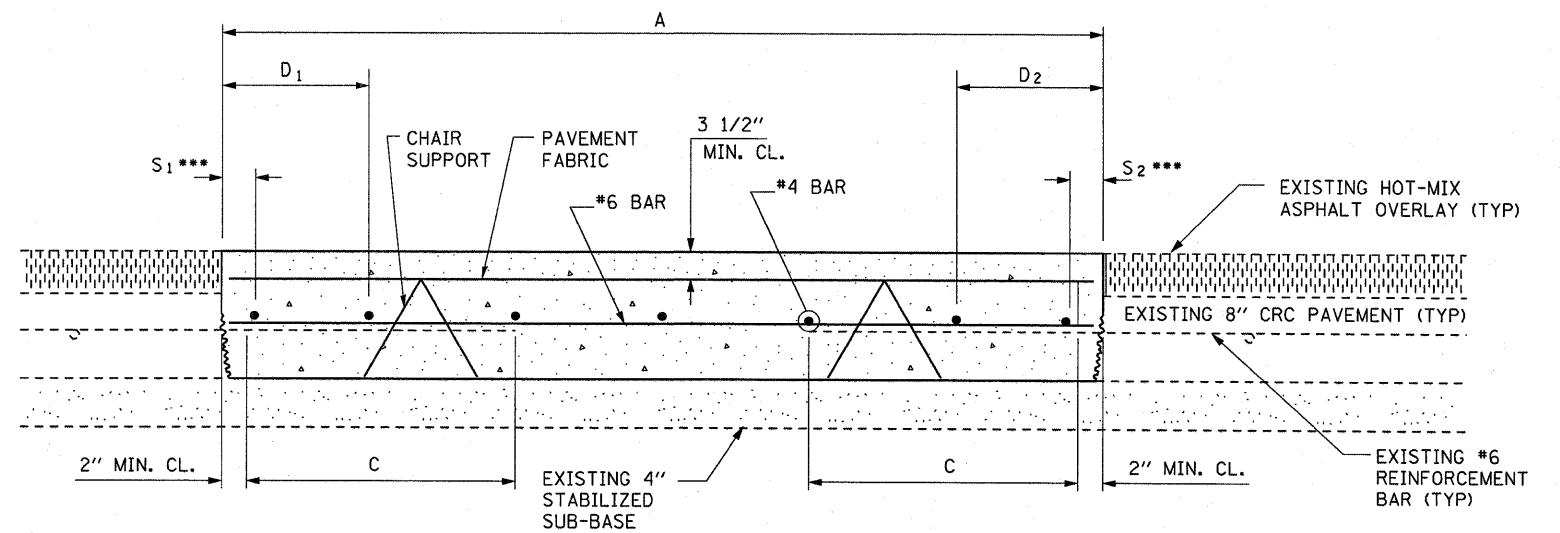
EXISTING LONGITUDINAL REINFORCEMENT BARS	A (min.)	B (min.)	C (min.)
No. 6	6'-0"	24"	19"



EXISTING PAVEMENT SAW CUTTING DETAIL



PROPOSED PAVEMENT DETAIL
(AGAINST BITUMINOUS SHOULDER)



PROPOSED CLASS A PATCHING DETAIL

- NOTES:**
- EVERY 3rd INTERSECTION MUST BE TIED
 - LAP NEW REINFORCEMENT WITH EXISTING LONGITUDINAL REINFORCEMENT
 - VARIABLES: WHERE S_1 AND S_2 ARE $2\frac{1}{2}$ " MIN. AND 12" MAX. $D_1 = 2(S_1)$ AND $D_2 = 2(S_2)$

FILE NAME =	USER NAME = mcnallysr	DESIGNED - RON WOODSHANK	REVISED -
c:\pwork\psidot\monallysr\d0264654\0386836-shr-details.dgn		DRAWN - RON WOODSHANK	REVISED -
	PLDT SCALE = 50.0000' / IN.	CHECKED -	REVISED -
	PLDT DATE = Apr 01, 2011 - 10:36:50 AM	DATE -	REVISED -

STATE OF ILLINOIS
DEPARTMENT OF TRANSPORTATION

CLASS A PATCHING DETAIL

SCALE: _____ SHEET NO. 1 OF 1 SHEETS STA. _____ TO STA. _____

F.A.I. RTE.	SECTION	COUNTY	TOTAL SHEETS	SHEET NO.
57	D3 PATCHING 2012-1	**	10	9
CONTRACT NO. 66B36			** FORD & IROQUOIS	