

F.A.I. RTE.	SECTION	COUNTY	TOTAL SHEETS	SHEET NO.
57	D3 PATCHING 2012-1	**	10	1
		ILLINOIS	CONTRACT NO. 66B36	

** FORD & IROQUOIS

D-93-002-11

STATE OF ILLINOIS
DEPARTMENT OF TRANSPORTATION
DIVISION OF HIGHWAYS

**PROPOSED
HIGHWAY PLANS**

FAI ROUTE 57 (I-57)
SECTION D3 PATCHING 2012-1

PAVEMENT PATCHING
FORD & IROQUOIS COUNTY

C-93-108-11



FUNCTIONAL CLASSIFICATION
RURAL - INTERSTATE
FAI RTE. 57 (I-57)
2010 ADT 16300
P.V 64.05% M.U. 28.37% S.U. 7.58%

STATE OF ILLINOIS
DEPARTMENT OF TRANSPORTATION
DIVISION OF HIGHWAYS

SUBMITTED 4/11 20 11

Eric S. Theobald
DEPUTY DIRECTOR OF HIGHWAYS, REGION ENGINEER

May 13 20 11
Scott E. Stitt P.E.
acting ENGINEER OF DESIGN AND ENVIRONMENT

May 13 20 11
Christine M. Road
DIRECTOR OF HIGHWAYS, CHIEF ENGINEER

PRINTED BY THE AUTHORITY
OF THE STATE OF ILLINOIS

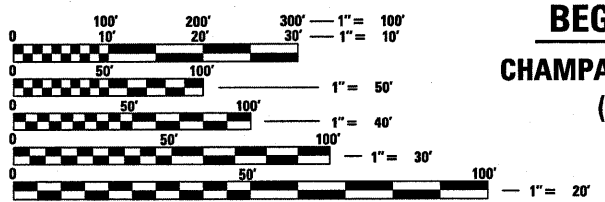
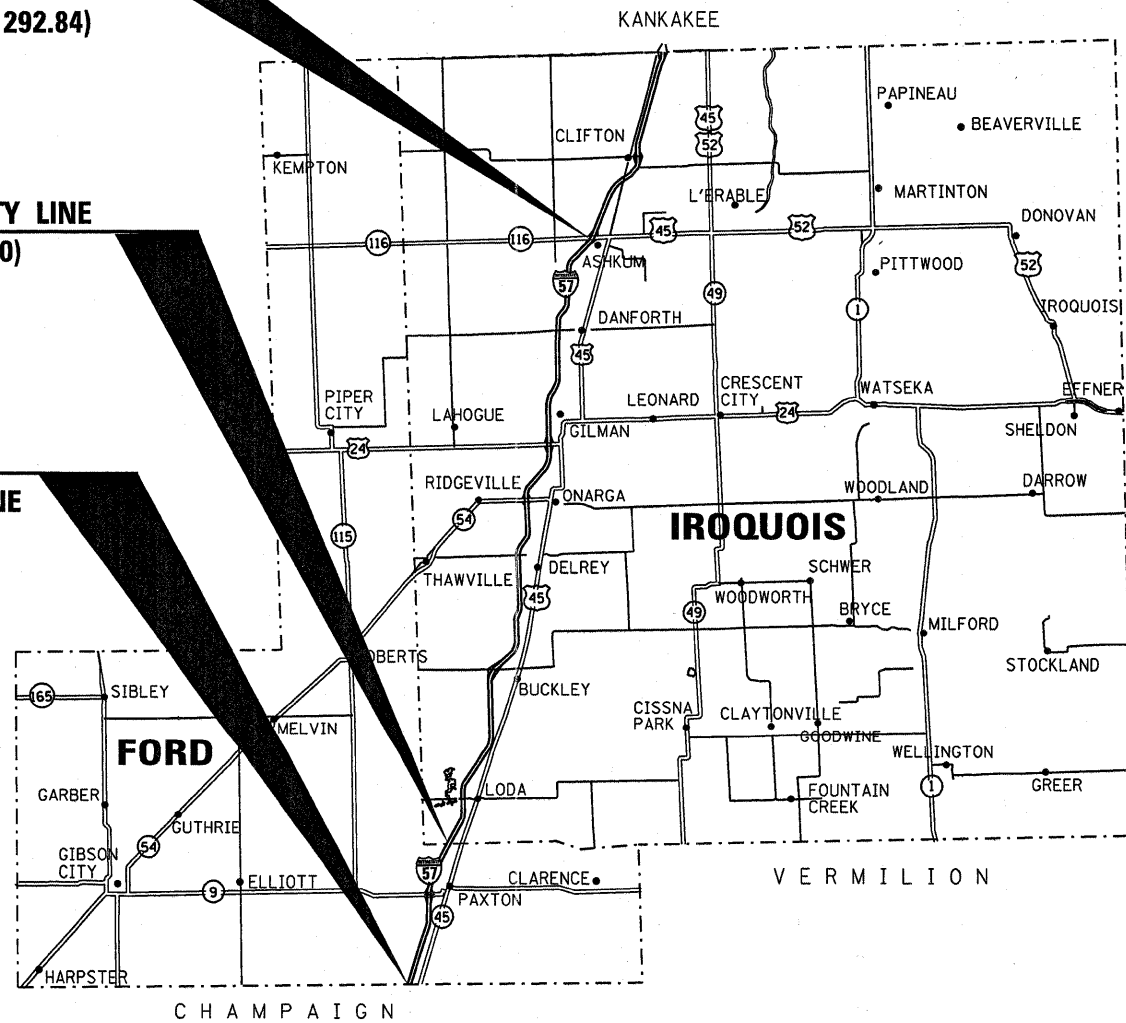
- INDEX OF SHEETS**
- COVER SHEET
 - GENERAL NOTES
 - SUMMARY OF QUANTITIES
 - TYPICAL SECTIONS
 - PATCHING SCHEDULE- NBL
 - PATCHING SCHEDULE- SBL
 - PAVEMENT MARKING SCHEDULES
 - TRAFFIC CONTROL AND PROTECTION, STANDARD 701400 (SPECIAL)
 - CLASS A PATCHING DETAILS
 - TYPICAL PAVEMENT MARKINGS

- STANDARDS**
- 000001-06 STANDARD SYMBOLS, ABBREVIATIONS AND PATTERNS
 - 001001-02 AREAS OF REINFORCEMENT BARS
 - 001006 DECIMAL OF AN INCH AND OF A FOOT
 - 421001-02 BAR REINFORCEMENT FOR CRC PAVEMENT
 - 701001-02 OFF-ROAD OPERATIONS 2L, 2W, MORE THAN 15' (4.5 m) AWAY
 - 701006-03 OFF-ROAD OPERATIONS 2L, 2W, 15' (4.5 m) TO 24" (600 mm) FROM PAVEMENT EDGE
 - 701101-02 OFF-ROAD OPERATIONS MULTILANE, 15' (4.5 m) TO 24" (600 mm) FROM PAVEMENT EDGE
 - 701106-02 OFF-ROAD OPERATIONS, MULTILANE, MORE THAN 15' (4.5 m) AWAY
 - 701401-06 LANE CLOSURE, FREEWAY/EXPRESSWAY
 - 701411-07 LANE CLOSURE, MULTILANE, AT ENTRANCE OR EXIT RAMP FOR SPEEDS ≥ 45 MPH
 - 701426-04 LANE CLOSURE, MULTILANE INTERMITTENT OR MOVING OPERATION, FOR SPEEDS ≥ 45 MPH
 - 701901-01 TRAFFIC CONTROL DEVICES

END PROJECT
IL RTE. 116
M.P. 292.84)

IROQUOIS COUNTY LINE
(M.P. 263.40)

BEGIN PROJECT
CHAMPAIGN COUNTY LINE
(M.P. 257.17)



FULL SIZE PLANS HAVE BEEN PREPARED USING STANDARD ENGINEERING SCALES. REDUCED SIZED PLANS WILL NOT CONFORM TO STANDARD SCALES. IN MAKING MEASUREMENTS ON REDUCED PLANS, THE ABOVE SCALES MAY BE USED.

J.U.L.I.E.
JOINT UTILITY LOCATION INFORMATION FOR EXCAVATION
1-800-892-0123
OR 811

PROJECT ENGINEER JOE KANNEL, P.E.
UNIT CHIEF PAT BRABOY
TOWNSHIPS VARIOUS
CONTRACT NO. 66B36

GROSS LENGTH = 177,777.60 FT. = 33.67 MILE

INDIANA

GENERAL NOTES

PLAN DIMENSIONS AND DETAILS RELATIVE TO EXISTING ROADWAY OR STRUCTURE HAVE BEEN TAKEN FROM EXISTING PLANS AND ARE SUBJECT TO NOMINAL CONSTRUCTION VARIATIONS. IT SHALL BE THE CONTRACTOR'S RESPONSIBILITY TO VERIFY SUCH DIMENSIONS AND DETAILS IN THE FIELD AND TO MAKE NECESSARY APPROVED ADJUSTMENTS PRIOR TO CONSTRUCTION OR ORDERING OF MATERIALS. SUCH VARIATIONS SHALL NOT BE CAUSE FOR ADDITIONAL COMPENSATION FOR A CHANGE IN THE SCOPE OF THE WORK, HOWEVER, THE CONTRACTOR WILL BE PAID FOR THE QUANTITY ACTUALLY FURNISHED AT THE UNIT BID FOR THE WORK.

FOR STABILIZATION, ALL TYPE III BARRICADES SHALL REQUIRE A MINIMUM OF FOUR SAND BAGS PER BARRICADE.

ABANDONED UNDERGROUND UTILITIES THAT CONFLICT WITH CONSTRUCTION SHALL BE DISPOSED OF OUTSIDE THE LIMITS OF THE RIGHT OF WAY ACCORDING TO ARTICLE 202.03 OF THE STANDARD SPECIFICATIONS AND AS DIRECTED BY THE ENGINEER. THIS WORK WILL NOT BE PAID FOR SEPARATELY BUT SHALL BE INCLUDED IN THE COST OF CLASS A PATCHING.

ANY REFERENCE TO A STANDARD IN THESE PLANS SHALL BE INTERPRETED TO MEAN THE EDITION AS INDICATED BY THE SUBNUMBER LISTED ON THE INDEX OF SHEETS OR THE COPY OF THE STANDARD INCLUDED IN THESE PLANS.

EXISTING REINFORCEMENT BARS EXTENDING INTO REMOVAL AREA SHALL BE CLEANED, STRAIGHTENED AND INCORPORATED INTO THE NEW CONSTRUCTION. ANY REINFORCEMENT BARS THAT ARE DAMAGED DURING CONCRETE REMOVAL SHALL BE REPLACED WITH AN APPROVED BAR SPLICER OR ANCHORAGE SYSTEM. COST INCLUDED WITH CONCRETE REMOVAL.

THE CONTRACTOR SHALL CONTACT JULIE AT LEAST 48 HOURS PRIOR TO EXCAVATION TO DETERMINE WHICH UTILITIES ARE IN THE AREA.

DATE: 4/11/11

PREPARED BY: Don Brackman
DISTRICT STUDIES & PLANS ENGINEER

EXAMINED BY: Herb Jurg
DISTRICT CONSTRUCTION ENGINEER

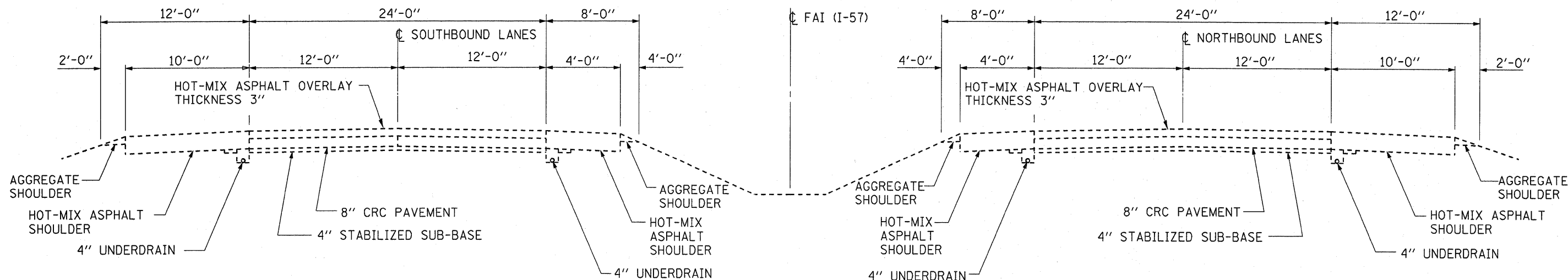
Ray J. Phillips
DISTRICT MATERIALS ENGINEER

James A. Husker
DISTRICT OPERATIONS ENGINEER

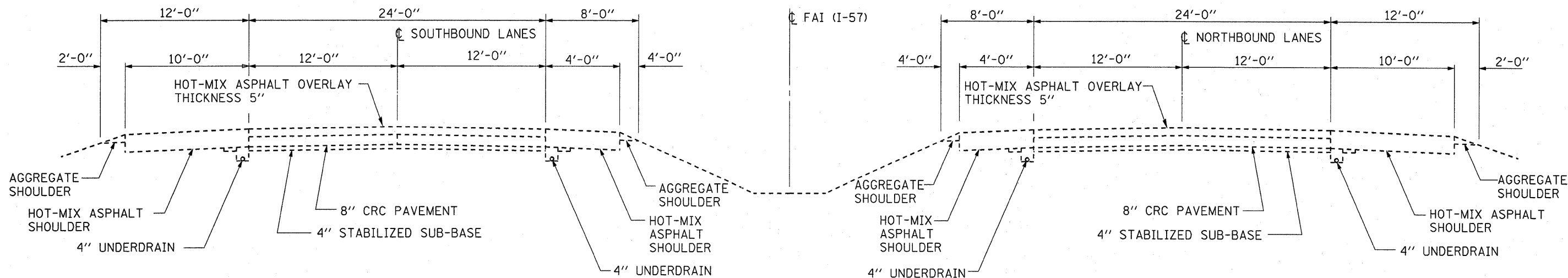
FILE NAME =	USER NAME = monallger	DESIGNED - RON WOODSHANK	REVISED -	STATE OF ILLINOIS DEPARTMENT OF TRANSPORTATION	GENERAL NOTES	F.A.I. RTE.	SECTION	COUNTY	TOTAL SHEETS	SHEET NO.
cd:\pw_work\pwwork\monallger\d0264654\0366B36-ahd-details.dgn	DRAWN - RON WOODSHANK	REVISED -	57			D3 PATCHING 2012-1	**	10	2	
PLOT SCALE = 50.0000' / IN.	CHECKED -	REVISED -	CONTRACT NO. 66B36							
PLOT DATE = Apr 01, 2011 - 10:39:06 AM	DATE -	REVISED -	** FORD & IROQUOIS							
					SCALE: _____	SHEET NO. 1 OF 1 SHEETS		STA. _____ TO STA. _____		

SUMMARY OF QUANTITIES					
CONSTRUCTION CODE TYPE:			0005		
			RURAL 100% STATE		
CODE NO.	ITEM	UNIT	TOTAL QUANTITY	FORD COUNTY	IROQUOIS COUNTY
44200565	CLASS A PATCHES, TYPE II, 11 INCH	SQ YD	72	72	0
44200569	CLASS A PATCHES, TYPE III, 11 INCH	SQ YD	80	80	0
44200610	CLASS A PATCHES, TYPE II, 13 INCH	SQ YD	624	0	624
44200612	CLASS A PATCHES, TYPE III, 13 INCH	SQ YD	32	0	32
44213000	PATCHING REINFORCEMENT	SQ YD	808	152	656
44213100	PAVEMENT FABRIC	SQ YD	808	152	656
44213200	SAW CUTS	FOOT	6150	972	5178
67100100	MOBILIZATION	L SUM	1	0.5	0.5
70100420	TRAFFIC CONTROL AND PROTECTION, STANDARD 701411	EACH	16	4	12
70103815	TRAFFIC CONTROL SURVEILLANCE	CAL DA	25	7	18
* 78005110	EPOXY PAVEMENT MARKING - LINE 4"	FOOT	1014	144	870
* 78005130	EPOXY PAVEMENT MARKING - LINE 6"	FOOT	133	21	112
X7010805	TRAFFIC CONTROL AND PROTECTION, STANDARD 701401 (SPECIAL)	L SUM	1	0.5	0.5

* • SPECIALTY ITEM



TYPICAL SECTIONS
M.P. 257.14 TO M.P. 263.49
FORD COUNTY



TYPICAL SECTIONS
M.P. 263.49 TO M.P. 292.84
IROQUOIS COUNTY

FILE NAME =	USER NAME = mconallyr	DESIGNED - RON WOODSHANK	REVISED -	STATE OF ILLINOIS DEPARTMENT OF TRANSPORTATION	TYPICAL SECTIONS	F.A.I. RTE.	SECTION	COUNTY	TOTAL SHEETS	SHEET NO.
c:\pwwork\pwwid\mconallyr\d0264654\0386836-shr-details.dgn	DRAWN - RON WOODSHANK	REVISED -	57			D3 PATCHING 2012-1	**	10	4	
PLLOT SCALE = 50.0000' / IN.	CHECKED -	REVISED -	CONTRACT NO. 66B36							
PLLOT DATE = Apr 01, 2011 - 10:38:29 AM	DATE -	REVISED -	** FORD & IROQUOIS							
SCALE: _____ SHEET NO. 1 OF 1 SHEETS STA. _____ TO STA. _____						ILLINOIS				

PATCHING SCHEDULE - NBL															
LOCATION BY LOG MILE	PASSING LANE						DRIVING LANE						REMARKS		
	CLASS A PATCHING*			PATCH REINF. SQ YD	PAVE'T FABRIC SQ YD	SAW CUTS FOOT	TIE BARS EACH	CLASS A PATCHING*			PATCH REINF. SQ YD	PAVE'T FABRIC SQ YD		SAW CUTS FOOT	TIE BARS EACH
TYPE II SQ YD	TYPE III SQ YD	TYPE IV SQ YD	TYPE II SQ YD					TYPE III SQ YD	TYPE IV SQ YD						
FORD COUNTY															
257.14															CHAMPAIGN COUNTY LINE
258.71	8			8	8	66		8			8	8	66		
261.06		16		16	16	84			16		16	16	84		
262.20		16		16	16	84			16		16	16	84		
262.30	8			8	8	60		8			8	8	66		
263.49															IROQUOIS COUNTY LINE
FORD SUB TOT	16	32		48	48	294		16	32		48	48	300		
IROQUOIS COUNTY															
276.10								8			8	8	66		
276.19								8			8	8	66		
280.13															IL RTE. 54
282.90								8			8	8	60		
283.04															US RTE. 24
283.45								8			8	8	60		
284.10	8			8	8	60		8			8	8	60		
284.30	8			8	8	60		8			8	8	60		
286.70	8			8	8	60		8			8	8	60		
288.70	8			8	8	60		8			8	8	60		
288.72								8			8	8	60		
289.80								8			8	8	60		
290.20								8			8	8	60		
290.40									16		16	16	72		
290.68	8			8	8	60		8			8	8	60		
291.70	8			8	8	60									
291.72	8			8	8	60									
291.80	8			8	8	60									
291.90								8			8	8	60		
292.10								8			8	8	60		
292.20								8			8	8	60		
292.84															IL RTE. 116
IROO SUBTOT	64			64	64	480		120	16		136	136	984		
TOTALS	80	32		112	112	774		136	48		184	184	1284		

*PATCHING THICKNESS 11" IN FORD COUNTY, 13" IN IROQUOIS COUNTY

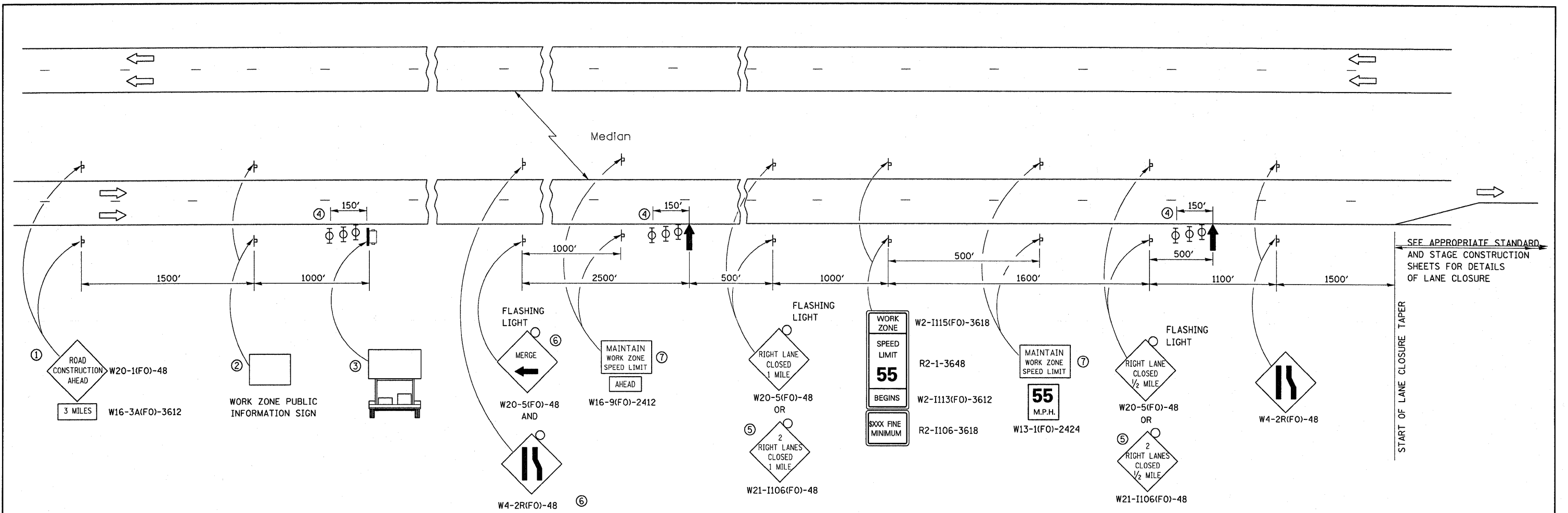
FILE NAME =	USER NAME = monallyr	DESIGNED - RON WOODSHANK	REVISED - ---	STATE OF ILLINOIS DEPARTMENT OF TRANSPORTATION	PATCHING SCHEDULES - NBL	F.A.I. RTE.	SECTION	COUNTY	TOTAL SHEETS	SHEET NO.
ci:\pwork\pw\dot\monallyr\d0264654\036836-shd-detail.dgn	DRAWN - RON WOODSHANK	REVISED - ---	57			D3 PATCHING 2012-1	**	10	5	
PLOT SCALE = 50.0000' / IN.	CHECKED - ---	REVISED - ---	CONTRACT NO. 66B36							
PLOT DATE = Apr 01, 2011 - 10:38:12 AM	DATE - ---	REVISED - ---	** FORD & IROQUOIS							
SCALE: _____ SHEET NO. 1 OF 1 SHEETS STA. _____ TO STA. _____						ILLINOIS				

PATCHING SCHEDULE - SBL															
LOCATION BY LOG MILE	PASSING LANE							DRIVING LANE							REMARKS
	CLASS A PATCHING*			PATCH REINF. SQ YD	PAVE'T FABRIC SQ YD	SAW CUTS FOOT	TIE BARS EACH	CLASS A PATCHING*			PATCH REINF. SQ YD	PAVE'T FABRIC SQ YD	SAW CUTS FOOT	TIE BARS EACH	
	TYPE II SQ YD	TYPE III SQ YD	TYPE IV SQ YD					TYPE II SQ YD	TYPE III SQ YD	TYPE IV SQ YD					
IROQUOIS COUNTY															
292.84	0	0	0	0	0	0	0	0	0	0	0	0	0	0	IL RTE 116
293.00	0	0	0	0	0	0	0	8	0	0	8	8	66	0	
292.30	8	0	0	8	8	66	0	8	0	0	8	8	66	0	
292.20	0	0	0	0	0	0	0	8	0	0	8	8	66	0	
292.00	0	0	0	0	0	0	0	8	0	0	8	8	66	0	
291.50	0	0	0	0	0	0	0	8	0	0	8	8	66	0	
291.05	0	0	0	0	0	0	0	8	0	0	8	8	66	0	
290.80	8	0	0	8	8	66	0	0	0	0	0	0	0	0	
290.40	8	0	0	8	8	66	0	0	0	0	0	0	0	0	
289.98	8	0	0	8	8	66	0	0	0	0	0	0	0	0	
287.73	8	0	0	8	8	66	0	8	0	0	8	8	66	0	
287.10	8	0	0	8	8	66	0	0	16	0	16	16	84	0	
286.10	8	0	0	8	8	66	0	8	0	0	8	8	66	0	
284.60	0	0	0	0	0	0	0	8	0	0	8	8	66	0	
284.20	8	0	0	8	8	66	0	8	0	0	8	8	66	0	
284.10	8	0	0	8	8	66	0	8	0	0	8	8	66	0	
283.70	0	0	0	0	0	0	0	8	0	0	8	8	66	0	
283.30	0	0	0	0	0	0	0	8	0	0	8	8	66	0	
283.04	0	0	0	0	0	0	0	0	0	0	0	0	0	0	US RTE 24
282.60	8	0	0	8	8	66	0	0	0	0	0	0	0	0	
282.59	8	0	0	8	8	66	0	8	0	0	8	8	66	0	
282.50	8	0	0	8	8	66	0	0	0	0	0	0	0	0	
281.30	8	0	0	8	8	66	0	8	0	0	8	8	66	0	
280.60	8	0	0	8	8	66	0	8	0	0	8	8	66	0	
280.55	8	0	0	8	8	66	0	0	0	0	0	0	0	0	
280.39	0	0	0	0	0	0	0	8	0	0	8	8	66	0	
280.13	0	0	0	0	0	0	0	0	0	0	0	0	0	0	IL RTE 54
279.60	0	0	0	0	0	0	0	8	0	0	8	8	66	0	
279.55	0	0	0	0	0	0	0	8	0	0	8	8	66	0	
278.40	0	0	0	0	0	0	0	8	0	0	8	8	66	0	
278.39	0	0	0	0	0	0	0	8	0	0	8	8	66	0	
277.80	0	0	0	0	0	0	0	8	0	0	8	8	66	0	
277.70	8	0	0	8	8	66	0	8	0	0	8	8	66	0	
276.39	0	0	0	0	0	0	0	8	0	0	8	8	66	0	
276.23	0	0	0	0	0	0	0	8	0	0	8	8	66	0	
276.20	0	0	0	0	0	0	0	8	0	0	8	8	66	0	
275.90	0	0	0	0	0	0	0	8	0	0	8	8	66	0	
275.80	0	0	0	0	0	0	0	8	0	0	8	8	66	0	
275.60	0	0	0	0	0	0	0	8	0	0	8	8	66	0	
275.40	0	0	0	0	0	0	0	8	0	0	8	8	66	0	
275.30	0	0	0	0	0	0	0	8	0	0	8	8	66	0	
270.60	0	0	0	0	0	0	0	8	0	0	8	8	66	0	
270.49	0	0	0	0	0	0	0	8	0	0	8	8	66	0	
269.92	0	0	0	0	0	0	0	8	0	0	8	8	66	0	
269.90	0	0	0	0	0	0	0	8	0	0	8	8	66	0	
267.80	0	0	0	0	0	0	0	8	0	0	8	8	66	0	
267.50	8	0	0	8	8	66	0	8	0	0	8	8	66	0	
266.60	0	0	0	0	0	0	0	8	0	0	8	8	66	0	
IROO SUBTOT	136	0	0	136	136	1122	0	304	16	0	320	320	2592	0	
FORD COUNTY															
263.49	0	0	0	0	0	0	0	0	0	0	0	0	0	0	FORD COUNTY LINE
261.40	0	0	0	0	0	0	0	8	0	0	8	8	66	0	
261.39	0	0	0	0	0	0	0	8	0	0	8	8	60	0	
261.05	0	0	0	0	0	0	0	0	16	0	16	16	72	0	
260.10	8	0	0	8	8	60	0	8	0	0	8	8	60	0	
258.60	0	0	0	0	0	0	0	8	0	0	8	8	60	0	
FORD SUBTOT	8	0	0	8	8	60	0	32	16	0	48	48	318	0	
TOTALS	144	0	0	144	144	1182	0	336	32	0	368	368	2910	0	

*PATCHING THICKNESS 11" IN FORD COUNTY, 13" IN IROQUOIS COUNTY

PAVEMENT MARKING SCHEDULE - NBL				
LOCATION	EPOXY PAVEMENT MARKING TYPE 1, LINE 4"		EPOXY PAVEMENT MARKING TYPE 1, LINE 6"	REMARKS
	YELLOW	WHITE	WHITE	
MILE POST				
257.14				CHAMPAIGN CO. LINE
258.71	6	6	2	
261.06	12	12	3	
262.20	12	12	3	
262.30	6	6	2	
263.49				IROOUIOS COUNTY LINE
TOTAL	36	36		
FORD TOTAL		72	10	
276.10		6	2	
276.19		6	2	
280.13				IL RTE. 54
282.90		6	2	
283.04				US RTE. 24
283.45		6	2	
284.10	6	6	2	
284.30	6	6	2	
286.70	6	6	2	
288.70	6	6	2	
288.72		6	2	
289.80		6	2	
290.20		6	2	
290.40		12	3	
290.68	6	6	2	
291.70	6			
291.72	6			
291.80	6			
291.90		6	2	
292.10		6	2	
292.20		6	2	
292.84				
IO. SUBTOTALS	48	102		
TOTALS		150	33	

PAVEMENT MARKING SCHEDULE - SBL				
LOCATION	EPOXY PAVEMENT MARKING TYPE 1, LINE 4"		EPOXY PAVEMENT MARKING TYPE 1, LINE 6"	REMARKS
	YELLOW	WHITE	WHITE	
MILE POST				
292.84				IL RTE 116
293.00		6	2	
292.30	6	6	2	
292.20		6	2	
292.00		6	2	
291.50		6	2	
291.05		6	2	
290.80	6			
290.40	6			
289.98	6			
287.73	6	6	2	
287.10	6	12	3	
286.10	6	6	2	
284.60		6	2	
284.20	6	6	2	
284.10	6	6	2	
283.70		6	2	
283.30		6	2	
283.04				US RTE 24
282.60	6			
282.59	6	6	2	
282.50	6			
281.30	6	6	2	
280.60	6	6	2	
280.55	6			
280.39		6	2	
280.13				IL RTE 54
279.60		6	2	
279.55		6	2	
278.40		6	2	
278.39		6	2	
277.80		6	2	
277.70	6	6	2	
276.39		6	2	
276.23		6	2	
276.20		6	2	
275.90		6	2	
275.80		6	2	
275.60		6	2	
275.40		6	2	
275.30		6	2	
270.60		6	2	
270.49		6	2	
269.92		6	2	
269.90		6	2	
267.80		6	2	
267.50	6	6	2	
266.60		6	2	
263.49				FORD COUNTY LINE
TOTAL	102	240		
IROO. TOTAL		342	79	
261.40		6	2	
261.39		6	2	
261.05		12	3	
260.10	6	6	2	
258.60		6	2	
FORD SUBTOTALS	6	36		
TOTALS		42	11	



- ① THE ROAD CONSTRUCTION AHEAD SIGN SHALL BE LOCATED 3 MILES IN ADVANCE OF THE PROJECT LIMITS.
- ② THE MESSAGE AND SIZE OF THE WORK ZONE PUBLIC INFORMATION SIGN SHALL BE AS SPECIFIED BY THE DEPARTMENT.
- ③ TO BE PLACED IN THE MEDIAN WHEN FEASIBLE. THE MESSAGE BOARD SHALL BE USED TO DISPLAY STATUS OF LANES WITHIN THE PROJECT. THE PRIMARY MESSAGES SHALL BE:
"RIGHT LANE CLOSED" / " X MILES AHEAD"
"LEFT LANE CLOSED" / " X MILES AHEAD"
"ALL LANES OPEN"
- ④ THREE, TYPE II BARRICADES, DRUMS, OR VERTICAL BARRICADES AT 50' CENTERS.
- ⑤ THIS SIGN SHALL BE USED WHEN 2 LANES ARE CLOSED.
- ⑥ WHEN THE LEFT LANE IS CLOSED, SWITCH THESE TWO SIGNS AND THE DIRECTION OF THE MERGE ARROW.

⑦ 48"x36" FLUORESCENT ORANGE SIGN WITH BLACK LETTERS.
48"

MAINTAIN	8"
WORK ZONE	6"
SPEED LIMIT	6"

- ↑ ARROW BOARD
- ☐ PORTABLE CHANGEABLE MESSAGE SIGN
- ⊥ SIGN
- ⊕ TYPE II BARRICADE, DRUM, OR VERTICAL BARRICADE WITH MONODIRECTIONAL FLASHING LIGHT

GENERAL NOTE:

THIS STANDARD IS USED WHERE AT ANY TIME A LANE IS CLOSED ON A FREEWAY/EXPRESSWAY.

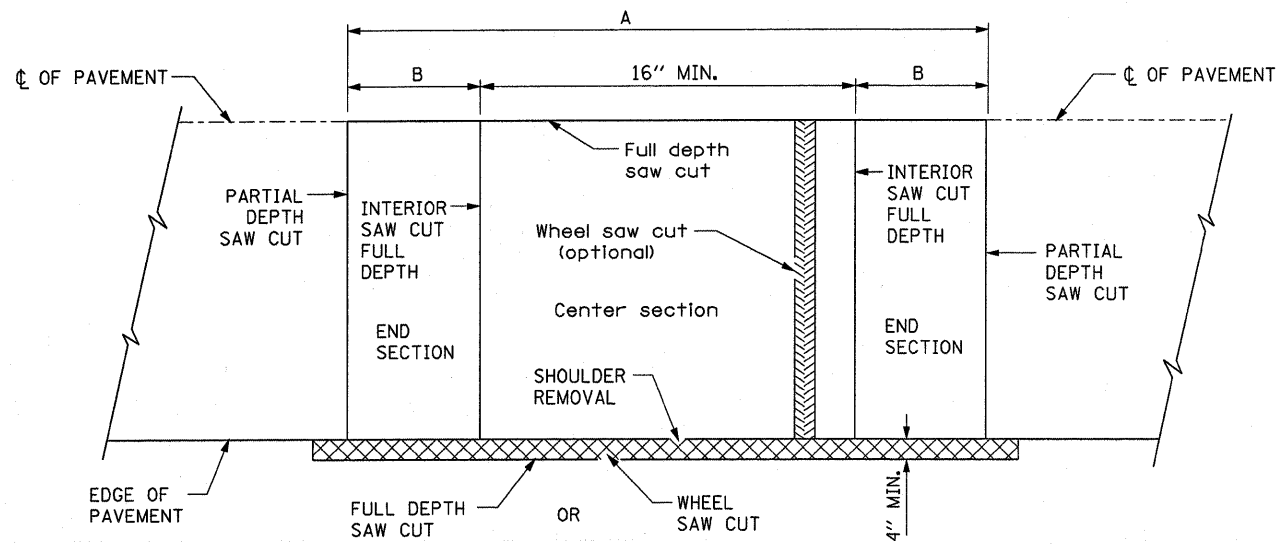
WHEN THE LEFT LANE IS CLOSED, LEFT LANE CLOSED SIGNS SHALL BE SUBSTITUTED FOR THE RIGHT LANE CLOSED SIGNS.

THE FIRST TWO SIGNS AND THE MESSAGE BOARD ARE STATIONARY. THE OTHER SIGNS AND ARROWBOARDS SHALL BE MOVED AS NECESSARY TO MAINTAIN THE REQUIRED DISTANCE FROM THE START OF THE LANE CLOSURE TAPER(S).

SEE SPECIAL PROVISIONS.

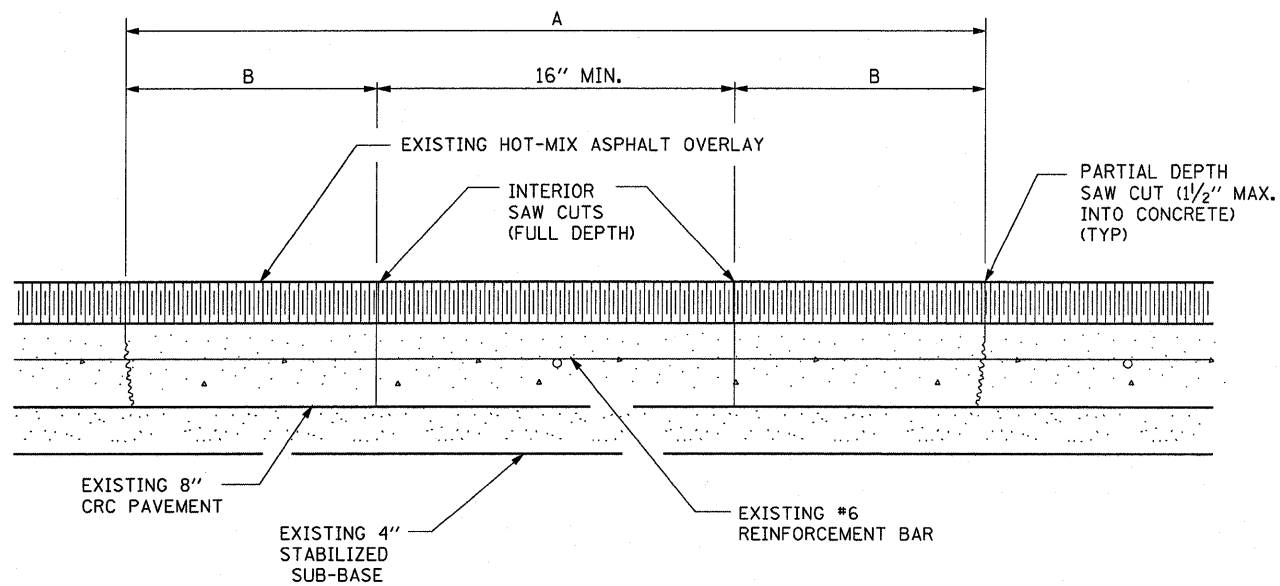
ALL DIMENSIONS ARE IN INCHES UNLESS OTHERWISE SHOWN.

FILE NAME =	USER NAME = monallyer	DESIGNED - RON WOODSHANK	REVISED -	STATE OF ILLINOIS DEPARTMENT OF TRANSPORTATION	TRAFFIC CONTROL AND PROTECTION STANDARD 701400 (SPECIAL) DETAILS	F.A.I. RTE.	SECTION	COUNTY	TOTAL SHEETS	SHEET NO.
o:\pr_work\pwidot\monallyer\d0264654\0366836-shd-details.dgn	DRAWN - RON WOODSHANK	REVISED -	D3 PATCHING 2012-1			**	10	8		
PLOT SCALE = 50.0000' / IN.	CHECKED -	REVISED -	CONTRACT NO. 66B36							
PLOT DATE = Apr 01, 2011 - 10:37:12 AM	DATE -	REVISED -	** FORD & IROQUOIS							
SCALE: _____		SHEET NO. 1 OF 1 SHEETS		STA. _____ TO STA. _____		ILLINOIS				

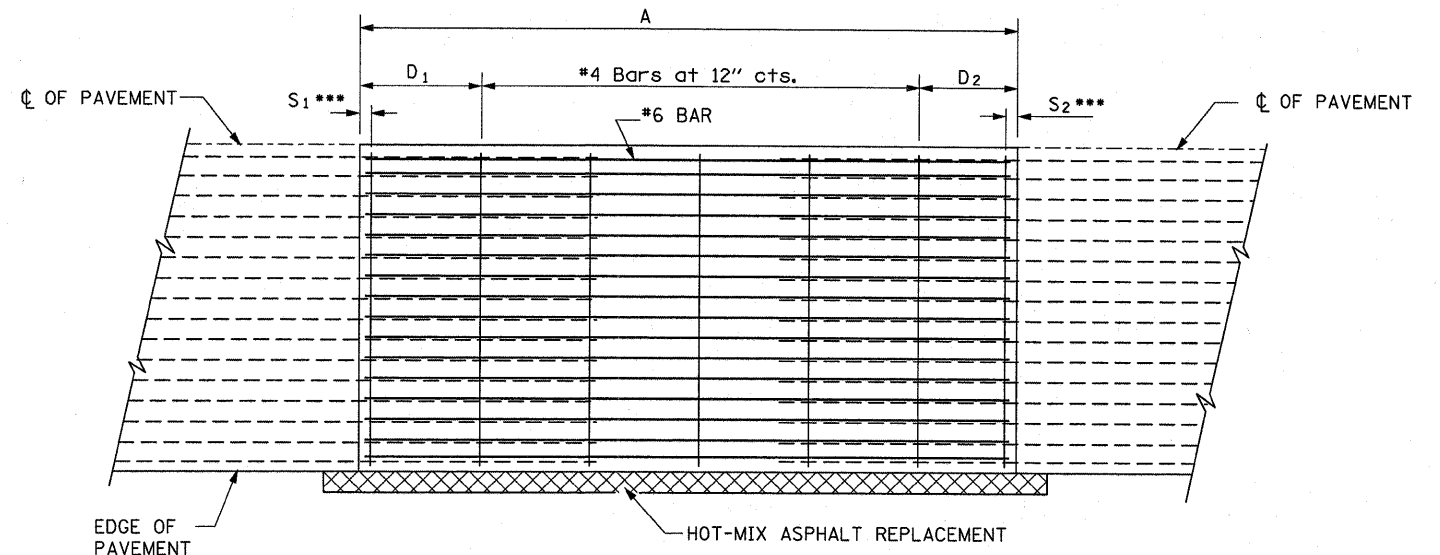


EXISTING PAVEMENT SAWING DETAIL
(AGAINST BITUMINOUS SHOULDER)

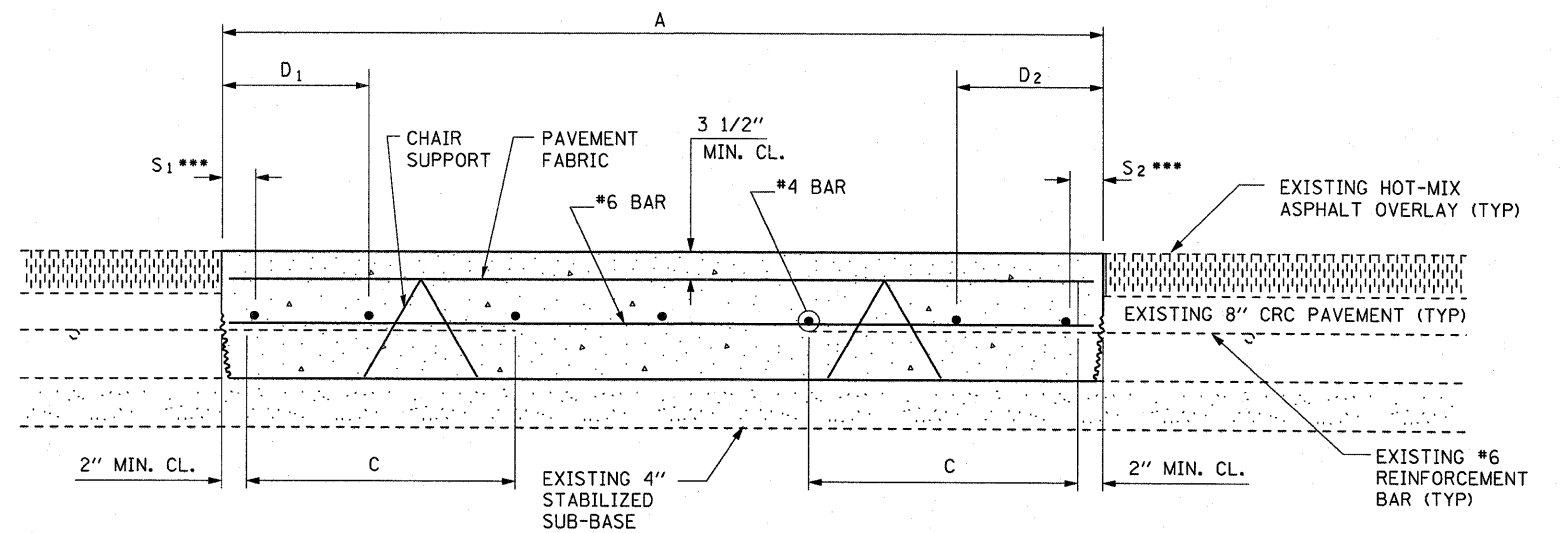
EXISTING LONGITUDINAL REINFORCEMENT BARS	A (min.)	B (min.)	C (min.)
No. 6	6'-0"	24"	19"



EXISTING PAVEMENT SAW CUTTING DETAIL



PROPOSED PAVEMENT DETAIL
(AGAINST BITUMINOUS SHOULDER)



PROPOSED CLASS A PATCHING DETAIL

- NOTES:**
- EVERY 3rd INTERSECTION MUST BE TIED
 - LAP NEW REINFORCEMENT WITH EXISTING LONGITUDINAL REINFORCEMENT
 - VARIABLES: WHERE S_1 AND S_2 ARE $2\frac{1}{2}$ " MIN. AND 12" MAX. $D_1 = 2(S_1)$ AND $D_2 = 2(S_2)$

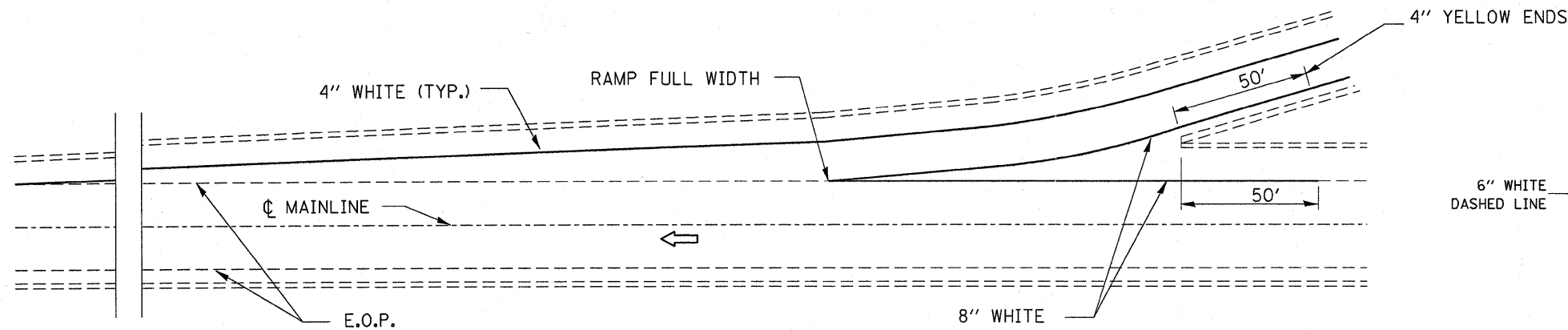
FILE NAME =	USER NAME = mcnallysr	DESIGNED - RON WOODSHANK	REVISED -
c:\pwork\psidot\monallysr\d0264654\0386836-shr-details.dgn		DRAWN - RON WOODSHANK	REVISED -
	PLDT SCALE = 50.0000' / IN.	CHECKED -	REVISED -
	PLDT DATE = Apr 01, 2011 - 10:36:50 AM	DATE -	REVISED -

**STATE OF ILLINOIS
DEPARTMENT OF TRANSPORTATION**

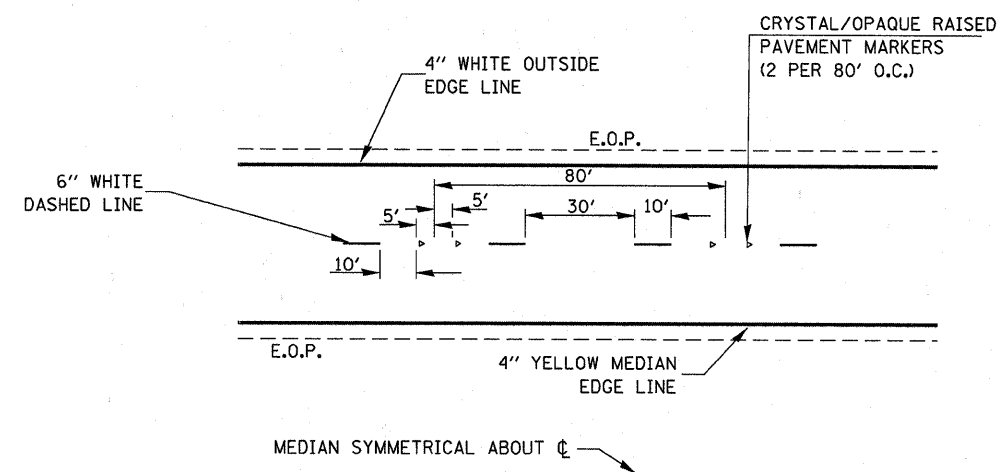
CLASS A PATCHING DETAIL

SCALE: _____ SHEET NO. 1 OF 1 SHEETS STA. _____ TO STA. _____

F.A.I. RTE.	SECTION	COUNTY	TOTAL SHEETS	SHEET NO.
57	D3 PATCHING 2012-1	**	10	9
CONTRACT NO. 66B36			** FORD & IROQUOIS	



TYPICAL PAVEMENT MARKING FOR ENTRANCE RAMP TERMINALS



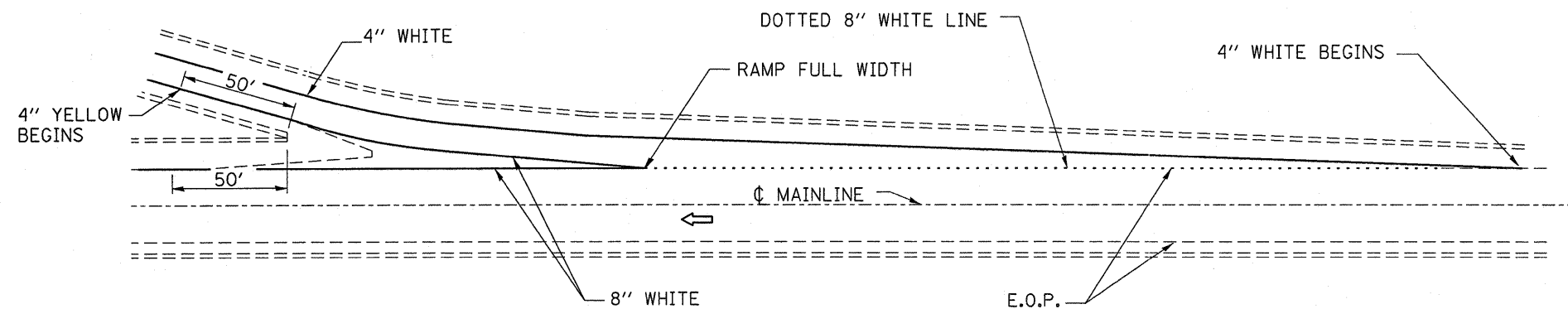
TYPICAL PAVEMENT MARKINGS

FAI 57

NOTE:

WHEN PATCHING IS ADJACENT TO 8" PAVEMENT MARKING LINE THE 8" STRIP SHALL BE REPLACED WITH TWO 4" LINES.

RAISED REFLECTIVE PAVEMENT MARKERS THAT FALL WITHIN PATCHED BOUNDARIES WILL NOT BE REPLACED.



TYPICAL PAVEMENT MARKINGS FOR EXIT RAMP TERMINALS

FILE NAME =	USER NAME = monallyar	DESIGNED - RON WOODSHANK	REVISED -
ct:\pwork\pwidot\monallyar\d0264654\0386836-shr-details.dgn		DRAWN - RON WOODSHANK	REVISED -
	PLDT SCALE = 50.0000' / IN.	CHECKED -	REVISED -
	PLDT DATE = Apr 01, 2011 - 10:36:35 AM	DATE -	REVISED -

STATE OF ILLINOIS
DEPARTMENT OF TRANSPORTATION

TYPICAL PAVEMENT MARKING

SCALE: SHEET NO. 1 OF 1 SHEETS STA. TO STA.

F.A.I. RTE.	SECTION	COUNTY	TOTAL SHEETS	SHEET NO.
57	D3 PATCHING 2012-1	**	10	10
CONTRACT NO. 66B36			** FORD & IROQUOIS	