

STATE OF ILLINOIS
DEPARTMENT OF TRANSPORTATION
DIVISION OF HIGHWAYS

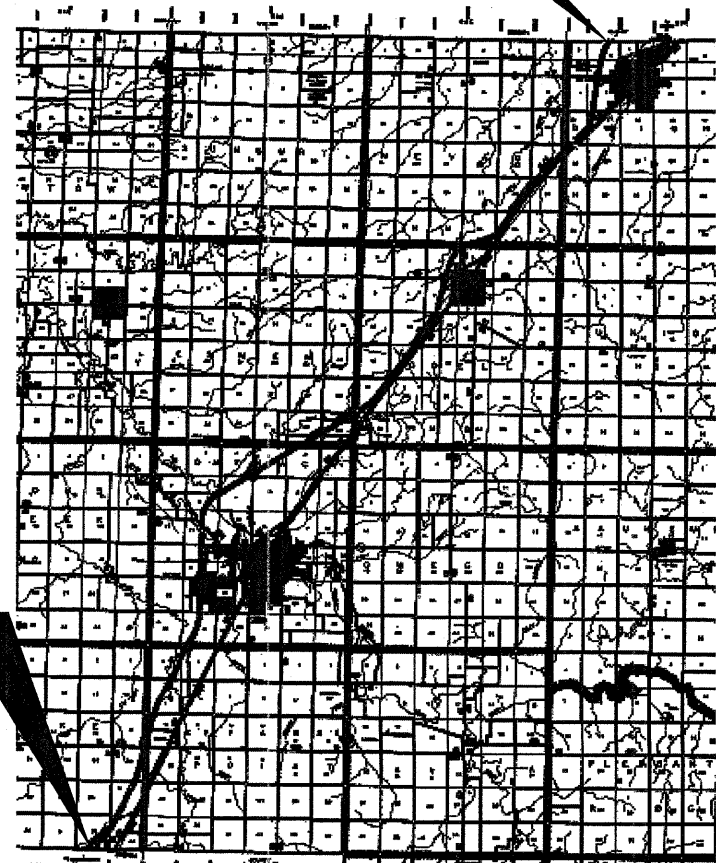
PROPOSED
HIGHWAY PLANS

FAI ROUTE 55 (I-55)
SECTION D3 PATCHING 2012-4

CLASS A PATCHING
LIVINGSTON COUNTY
C-93-111-11

END FAI 55 PROJECT
CLASS A PATCHING
GRUNDY COUNTY LINE
(M.M. 218.07)

BEGIN FAI 55 PROJECT
CLASS A PATCHING
McCLEAN COUNTY LINE
(M.M. 187.70)



INDEX OF SHEETS

1. COVER SHEET
2. GENERAL NOTES
3. SUMMARY OF QUANTITIES
4. TYPICAL SECTIONS - FAI 55
5. PATCHING SCHEDULE - I-55 NB
6. PATCHING SCHEDULE - I-55 SB
7. PAVEMENT MARKING SCHEDULE - I-55
8. TRAFFIC CONTROL SHEET
9. CLASS A PATCHING DETAILS WITHOUT HMA OVERLAY
10. CLASS A PATCHING DETAILS WITH HMA OVERLAY
11. TYPICAL PAVEMENT MARKINGS

STANDARDS

- | | |
|-----------|--|
| 000001-06 | STANDARD SYMBOLS, ABBREVIATIONS AND PATTERNS |
| 001001-02 | AREAS OF REINFORCEMENT BARS |
| 001006 | DECIMAL OF AN INCH AND OF A FOOT |
| 420001-07 | PAVEMENT JOINTS |
| 420101-04 | 24' (7.2 m) JOINTED PCC PAVEMENT |
| 420111-03 | PCC PAVEMENT ROUNDOUTS |
| 421001-02 | BAR REINFORCEMENT FOR CRC PAVEMENT |
| 442001-04 | CLASS A PATCHES |
| 701101-02 | OFF-ROAD OPERATIONS MULTILANE, 15' (4.5 m) TO 24" (600 mm) FROM PAVEMENT EDGE |
| 701106-02 | OFF-ROAD OPERATIONS, MULTILANE, MORE THAN 15' (4.5 m) AWAY |
| 701401-06 | LANE CLOSURE, FREEWAY/EXPRESSWAY |
| 701411-07 | LANE CLOSURE, MULTILANE, AT ENTRANCE OR EXIT RAMP FOR SPEEDS Δ 45 MPH |
| 701426-04 | LANE CLOSURE, MULTILANE INTERMITTENT OR MOVING OPERATION, FOR SPEEDS Δ 45 MPH |
| 701901-01 | TRAFFIC CONTROL DEVICES |

J.U.L.I.E.
JOINT UTILITY LOCATION INFORMATION FOR EXCAVATION
1-800-892-0123
OR 811

PROJECT ENGINEER: JOE KANNEL, P.E.
UNIT CHIEF: PAT BRABOY
TOWNSHIPS: VARIOUS
CONTRACT NO. 66B39

F.A.I. RTE.	SECTION	COUNTY	TOTAL SHEETS	SHEET NO.
55	**	LIVINGSTON	11	1
ILLINOIS			CONTRACT NO. 66B39	

** D3 PATCHING 2012-4

D-93-002-11



LOCATION OF SECTION INDICATED THUS: - [thick black line] -

FUNCTIONAL CLASSIFICATION
RURAL: INTERSTATE
FAI ROUTE 55
2010 ADT = 20100
P.V. = 74.9% M.U. = 21.4% S.U. = 3.7%

STATE OF ILLINOIS
DEPARTMENT OF TRANSPORTATION
DIVISION OF HIGHWAYS

SUBMITTED April 4 20 11

Eric S. Throckmorton
DEPUTY DIRECTOR OF HIGHWAYS, REGION ENGINEER

May 13 20 11

Scott E. Stitt P.E. JR.
ENGINEER OF DESIGN AND ENVIRONMENT

May 13 20 11

Christine M. Reed
DIRECTOR OF HIGHWAYS, CHIEF ENGINEER

PRINTED BY THE AUTHORITY
OF THE STATE OF ILLINOIS

GENERAL NOTES

PLAN DIMENSIONS AND DETAILS RELATIVE TO EXISTING ROADWAY OR STRUCTURE HAVE BEEN TAKEN FROM EXISTING PLANS AND ARE SUBJECT TO NOMINAL CONSTRUCTION VARIATIONS. IT SHALL BE THE CONTRACTOR'S RESPONSIBILITY TO VERIFY SUCH DIMENSIONS AND DETAILS IN THE FIELD AND TO MAKE NECESSARY APPROVED ADJUSTMENTS PRIOR TO CONSTRUCTION OR ORDERING OF MATERIALS. SUCH VARIATIONS SHALL NOT BE CAUSE FOR ADDITIONAL COMPENSATION FOR A CHANGE IN THE SCOPE OF THE WORK, HOWEVER, THE CONTRACTOR WILL BE PAID FOR THE QUANTITY ACTUALLY FURNISHED AT THE UNIT BID FOR THE WORK.

FOR STABILIZATION, ALL TYPE III BARRICADES SHALL REQUIRE A MINIMUM OF FOUR SAND BAGS PER BARRICADE.

ABANDONED UNDERGROUND UTILITIES THAT CONFLICT WITH CONSTRUCTION SHALL BE DISPOSED OF OUTSIDE THE LIMITS OF THE RIGHT OF WAY ACCORDING TO ARTICLE 202.03 OF THE STANDARD SPECIFICATIONS AND AS DIRECTED BY THE ENGINEER. THIS WORK WILL NOT BE PAID FOR SEPARATELY BUT SHALL BE INCLUDED IN THE COST OF CLASS A PATCHING.

ANY REFERENCE TO A STANDARD IN THESE PLANS SHALL BE INTERPRETED TO MEAN THE EDITION AS INDICATED BY THE SUBNUMBER LISTED ON THE INDEX OF SHEETS OR THE COPY OF THE STANDARD INCLUDED IN THESE PLANS.

EXISTING REINFORCEMENT BARS EXTENDING INTO REMOVAL AREA SHALL BE CLEANED, STRAIGHTENED AND INCORPORATED INTO THE NEW CONSTRUCTION. ANY REINFORCEMENT BARS THAT ARE DAMAGED DURING CONCRETE REMOVAL SHALL BE REPLACED WITH AN APPROVED BAR SPLICER OR ANCHORAGE SYSTEM. COST INCLUDED WITH CONCRETE REMOVAL.

THE CONTRACTOR SHALL CONTACT JULIE AT LEAST 48 HOURS PRIOR TO EXCAVATION TO DETERMINE WHICH UTILITIES ARE IN THE AREA.

DATE: 4-4-11

PREPARED BY: *Don Blomil*
DISTRICT STUDIES & PLANS ENGINEER

EXAMINED BY: *[Signature]*
DISTRICT CONSTRUCTION ENGINEER

Wayne Phillips
DISTRICT MATERIALS ENGINEER

Bruce A. Hoff
DISTRICT OPERATIONS ENGINEER

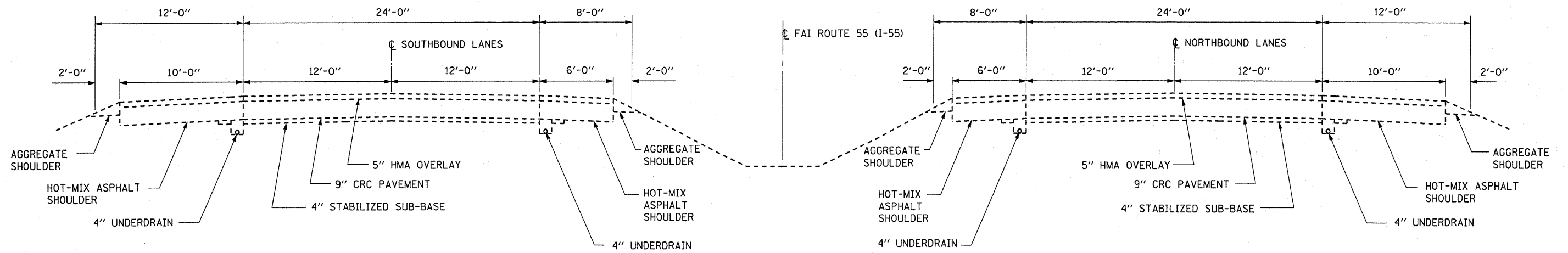
FILE NAME =	USER NAME = brcboypc	DESIGNED - RON WOODSHANK	REVISED -	STATE OF ILLINOIS DEPARTMENT OF TRANSPORTATION	GENERAL NOTES	F.A.I. RTE.	SECTION	COUNTY	TOTAL SHEETS	SHEET NO.
ct:\pw_work\pwidot\brcboypc\d0264585\036839-sht-details.dgn	DRAWN - RON WOODSHANK	REVISED -	55			D3 PATCHING 2012-4	LIVINGSTON	11	2	
PLOT SCALE = 50.0000' / IN.	CHECKED -	REVISED -	CONTRACT NO. 66B39							
PLOT DATE = Apr 02, 2011 - 06:46:42 PM	DATE -	REVISED -	SCALE: _____			SHEET NO. 1 OF 1 SHEETS	STA. _____ TO STA. _____	ILLINOIS		

SUMMARY OF QUANTITIES			
CONSTRUCTION CODE: 0005			
CODE NO.	ITEM	UNIT	100% STATE TOTAL QUANTITY
44200541	CLASS A PATCHES, TYPE II, 9 INCH	SO YD	59
44200620	CLASS A PATCHES, TYPE II, 14 INCH	SO YD	455
44200624	CLASS A PATCHES, TYPE III, 14 INCH	SO YD	152
44200628	CLASS A PATCHES, TYPE IV, 14 INCH	SO YD	127
44213000	PATCHING REINFORCEMENT	SO YD	793
44213100	PAVEMENT FABRIC	SO YD	734
44213200	SAW CUTS	FOOT	4644
67100100	MOBILIZATION	L SUM	1
70100420	TRAFFIC CONTROL AND PROTECTION, STANDARD 701411	EACH	16
70103815	TRAFFIC CONTROL SURVEILLANCE	CAL DA	15
X7800610	URETHANE PAVEMENT MARKING - LINE 4"	FOOT	594
X7800630	URETHANE PAVEMENT MARKING - LINE 6"	FOOT	163
X7010805	TRAFFIC CONTROL AND PROTECTION, STANDARD 701401 (SPECIAL)	L SUM	1
44213204	TIE BARS 3/4"	EACH	47

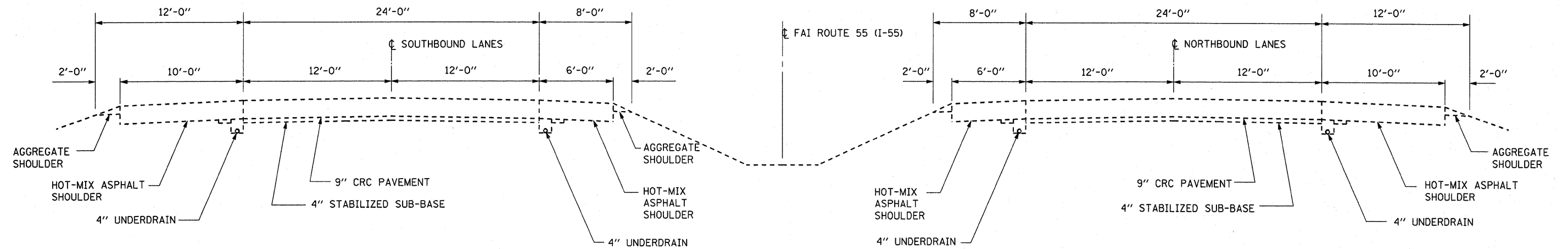
•SPECIALTY ITEM

FILE NAME =	USER NAME = braboyce	DESIGNED - RON WOODSHANK	REVISED -	STATE OF ILLINOIS DEPARTMENT OF TRANSPORTATION	SUMMARY OF QUANTITIES	F.A.I. RTE.	SECTION	COUNTY	TOTAL SHEETS	SHEET NO.
c:\pwork\pwork\braboyce\0264585\0366839-shd-details.dgn	DRAWN - RON WOODSHANK	REVISED -	55			D3 PATCHING 2012-4	LIVINGSTON	11	3	
PLOT SCALE = 50.0000' / IN.	CHECKED -	REVISED -	CONTRACT NO. 66B39							
PLOT DATE = Apr 04, 2011 - 09:09:51 AM	DATE -	REVISED -	SCALE: _____			SHEET NO. 1 OF 1 SHEETS	STA. _____ TO STA. _____	ILLINOIS		

Rev.



**TYPICAL SECTION
MAINLINE**
M.M. 137.70 TO M.M. 215.40



**TYPICAL SECTION
MAINLINE**
M.M. 215.40 TO M.M. 218.07

FILE NAME =	USER NAME = braboypc	DESIGNED - RON WOODSHANK	REVISED -	STATE OF ILLINOIS DEPARTMENT OF TRANSPORTATION	TYPICAL SECTIONS - FAI 55	F.A.I. RTE.	SECTION	COUNTY	TOTAL SHEETS	SHEET NO.
c:\pwwork\pwwork\braboypc\d0264585\0366839-shd-details.dgn	DRAWN - RON WOODSHANK	REVISED -	55			D3 PATCHING 2012-4	LIVINGSTON	11	4	
PLT SCALE = 50.0000' / IN.	CHECKED -	REVISED -	CONTRACT NO. 66B39							
PLT DATE = Apr 02, 2011 - 06:46:23 PM	DATE -	REVISED -	ILLINOIS							
					SCALE: _____	SHEET NO. 1 OF 1 SHEETS		STA. _____ TO STA. _____		

PATCHING SCHEDULE - NBL

LOCATION BY MILE POST	PASS LANE	DRIVE LANE	LOCATION BY LOG MILE	PASSING LANE							DRIVING LANE							REMARKS	
				CLASS A TYPE II 9"	CLASS A TYPE II 14"	CLASS A TYPE III 14"	PATCH REINF.	PAV'T FABRIC	SAW CUTS	TIE BARS	CLASS A TYPE II 9"	CLASS A TYPE II 14"	CLASS A TYPE III 14"	TYPE IV 14"	PATCH REINF.	PAV'T FABRIC	SAW CUTS		TIE BARS
				SQ YD	SQ YD	SQ YD	SQ YD	SQ YD	FOOT	EACH	SQ YD	SQ YD	SQ YD	SQ YD	SQ YD	SQ YD	FOOT		EACH
187.70							0	0											MCLEAN COUNTY LINE
187.73		50	7.08				0	0					67	67	67	148	25		
188.17		15	7.52				0	0						20	20	78	0		
189.03		10	8.38				0	0					13	13	13	68	0		
189.17		6	8.52				0	0				8	8	8	60	0			
189.38	10	6	8.73		14		14	14	68			8	8	8	60	0			
191.06		6	10.41				0	0				8	8	8	60	0			
191.09		6	10.44				0	0				8	8	8	60	0			
191.17		6	10.52				0	0				8	8	8	60	0			
191.26		6	10.61				0	0				8	8	8	60	0			
191.61		6	10.96				0	0				8	8	8	60	0			
191.74		6	11.09				0	0				8	8	8	60	0			
191.82		6	11.17				0	0				8	8	8	60	0			
191.84		6	11.19				0	0				8	8	8	60	0			
192.17		6	11.52				0	0				8	8	8	60	0			
194.35		6	13.70				0	0				8	8	8	60	0			
194.87		6	14.22				0	0				8	8	8	60	0			
194.98		6	14.33				0	0				8	8	8	60	0			
194.99		6	14.34				0	0				8	8	8	60	0			
195.18		6	14.53				0	0				8	8	8	60	0			
195.39		6	14.74				0	0				8	8	8	60	0			
195.47		6	14.82				0	0				8	8	8	60	0			
195.98		8	15.33				0	0					11	11	11	64	0		
196.53		6	15.88				0	0				8	8	8	60	0			
197.14		6	16.49				0	0				8	8	8	60	0			
197.15		6	16.50				0	0				8	8	8	60	0			
204.93		8	24.28				0	0					11	11	11	64	0		
207.75			27.10				0	0						0	0	0	0	END HMA SECTION; BEGIN CONCRETE SECTION	
207.88	6		27.33		8		8	8	60					0	0	0	0		
207.92		8	27.27				0	0					11	11	11	64	0		
207.94		6	27.29				0	0				8	8	8	60	0			
209.17		8	28.52				0	0					11	11	11	64	0		
209.20		6	28.55				0	0				8	8	8	60	0			
209.95		9	29.30				0	0					12	12	12	66	0		
210.10		6	29.45				0	0				8	8	8	60	0			
							0	0						0	0	0	0		
							0	0						0	0	0	0		
							0	0						0	0	0	0		
NBL TOTALS					22		22	22	128	0	0	205	76	67	348	348	2056	25	

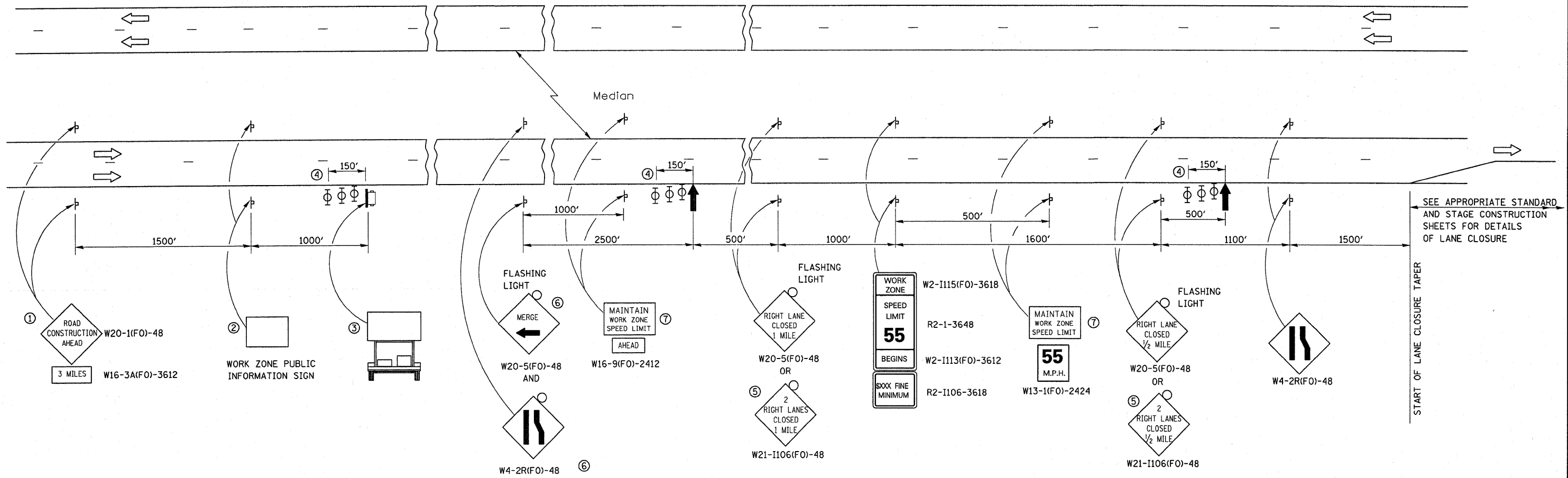
ILLINOIS CONTRACT NO. 66B39

PATCHING SCHEDULE - SBL

LOCATION BY MILE POST	PASS LANE	DRIVE LANE	LOCATION BY LOG MILE	PASSING LANE								DRIVING LANE								REMARKS
				CLASS A TYPE II 9"	CLASS A TYPE II 14"	CLASS A TYPE III 14"	PATCH REINF.	PAV'T FABRIC	SAW CUTS	TIE BARS	CLASS A TYPE II 9"	CLASS A TYPE II 14"	CLASS A TYPE III 14"	TYPE IV 14"	PATCH REINF.	PAV'T FABRIC	SAW CUTS	TIE BARS		
				SQ YD	SQ YD	SQ YD	SQ YD	SQ YD	FOOT	EACH	SQ YD	SQ YD	SQ YD	SQ YD	SQ YD	SQ YD	FOOT	EACH		
218.07																			GRUNDY COUNTY LINE	
217.95	6	8	0.12	8			8			60				11			64	0		
217.68		6	0.39				0	0						8			60	0		
217.66		6	0.41				0	0						8			60	0		
217.65		6	0.42				0	0		0				8			60	0		
217.57	6	6	0.50	8			8			60				8			60	0		
208.01	15	15	10.06			20	20	20		78					20	20	78	0		
204.29		6	13.78	0			0	0						8	8		60	0		
204.21		6	13.86				0	0						8	8		60	0		
204.20		6	13.87				0	0						8	8		60	0		
204.19		6	13.88				0	0						8	8		60	0		
204.17		6	13.90				0	0						8	8		60	0		
203.91		6	14.16				0	0						8	8		60	0		
203.87		6	14.20				0	0						8	8		60	0		
203.86		6	14.21				0	0						8	8		60	0		
203.67		6	14.40				0	0						8	8		60	0		
203.57		6	14.50				0	0						8	8		60	0		
203.47		6	14.60				0	0						8	8		60	0		
202.95		12	15.12				0	0							16	16	72	0		
202.56		6	15.51				0	0						8	8		60	0		
202.41		6	15.66				0	0						8	8		60	0		
202.12		10	15.95				0	0						13	13		68	0		
200.69		10	17.38				0	0						13	13		68	0		
200.63		15	17.44				0	0							20	20	78	0		
200.48		6	17.59				0	0						8	8		60	0		
199.91		25	18.16				0	0								33	33	98	12	
199.88		10	18.19				0	0						13	13		68	0		
199.77		10	18.30				0	0						13	13		68	0		
199.75		8	18.32				0	0						11	11		64	0		
199.67		6	18.40				0	0						8	8		60	0		
199.63		10	18.44				0	0						13	13		68	0		
199.62		6	18.45				0	0						8	8		60	0		
199.61		6	18.46				0	0						8	8		60	0		
199.59		20	18.48				0	0								27	27	88	10	
198.81		6	19.26				0	0						8	8		60	0		
196.76		6	21.31				0	0						8	8		60	0		
188.07							0	0						0	0		0	0		
SBL TOTALS				16	0	20	36	20	198	0	43	228	56	60	387	344	2262	22	MCLEAN/LIVINGSTON COUNTY LINE	

PAVEMENT MARKING SCHEDULE - FAI 55			
LOCATION NBL	URETHANE PAVEMENT MARKING, LINE 4"		URETHANE PAVEMENT MARKING, LINE 6"
	FEET		FEET
LOG MILE	YELLOW	WHITE	WHITE
187.70	MCLEAN COUNTY LINE		
187.73		50	13
188.17		15	4
189.03		10	3
189.17		6	2
189.38	10	6	2
191.06		6	2
191.09		6	2
191.17		6	2
191.26		6	2
191.61		6	2
191.74		6	2
191.82	6		
191.84		6	2
192.17		6	2
194.35		6	2
194.87		6	2
194.98		6	2
194.99		6	2
195.18		6	2
195.39		6	2
195.47		6	2
195.98		8	2
196.53		6	2
197.14		6	2
197.15		6	2
204.93		8	2
207.75			
207.88	6		
207.92		8	2
207.94		6	2
209.17		8	2
209.20		6	2
209.95		9	3
210.10		6	2
218.70	GRUNDY COUNTY LINE		
SUBTOTALS	22	254	77
TOTAL		276	77

PAVEMENT MARKING SCHEDULE - FAI 55			
LOCATION SBL	URETHANE PAVEMENT MARKING, LINE 4"		URETHANE PAVEMENT MARKING, LINE 6"
	FEET		FEET
LOG MILE	YELLOW	WHITE	WHITE
218.07	GRUNDY COUNTY LINE		
217.95	6	8	2
217.68	6	6	2
217.66		6	2
217.65		6	2
217.57	6	6	2
215.23	ASPHALT OVERLAY BEGINS		
208.01	15	15	4
204.29		6	2
204.21		6	2
204.2		6	2
204.19		6	2
204.17		6	2
203.91		6	2
203.87		6	2
203.86		6	2
203.67		6	2
203.47		6	2
202.95		12	3
202.56		6	2
202.41		6	2
202.12		10	3
200.69		10	3
200.63		15	4
200.48		6	2
199.91		25	7
199.88		10	3
199.77		10	3
199.75		8	2
199.67		6	2
199.63		10	3
199.62		6	2
199.61		6	2
199.59		20	5
198.81		6	2
196.76		6	2
SUBTOTALS	33	285	86
TOTAL		318	86



- ① THE ROAD CONSTRUCTION AHEAD SIGN SHALL BE LOCATED 3 MILES IN ADVANCE OF THE PROJECT LIMITS.
- ② THE MESSAGE AND SIZE OF THE WORK ZONE PUBLIC INFORMATION SIGN SHALL BE AS SPECIFIED BY THE DEPARTMENT.
- ③ TO BE PLACED IN THE MEDIAN WHEN FEASIBLE. THE MESSAGE BOARD SHALL BE USED TO DISPLAY STATUS OF LANES WITHIN THE PROJECT. THE PRIMARY MESSAGES SHALL BE:
"RIGHT LANE CLOSED" / " x MILES AHEAD"
"LEFT LANE CLOSED" / " x MILES AHEAD"
"ALL LANES OPEN"
- ④ THREE, TYPE II BARRICADES, DRUMS, OR VERTICAL BARRICADES AT 50' CENTERS.
- ⑤ THIS SIGN SHALL BE USED WHEN 2 LANES ARE CLOSED.
- ⑥ WHEN THE LEFT LANE IS CLOSED, SWITCH THESE TWO SIGNS AND THE DIRECTION OF THE MERGE ARROW.

- ⑦ 48"x36" FLUORESCENT ORANGE SIGN WITH BLACK LETTERS.
48"
36" MAINTAIN WORK ZONE SPEED LIMIT 8" 6" 6"
- ↑ ARROW BOARD
- ☐ PORTABLE CHANGEABLE MESSAGE SIGN
- ⊥ SIGN
- ⊕ TYPE II BARRICADE, DRUM, OR VERTICAL BARRICADE WITH MONODIRECTIONAL FLASHING LIGHT

GENERAL NOTE:

THIS STANDARD IS USED WHERE AT ANY TIME A LANE IS CLOSED ON A FREEWAY/EXPRESSWAY.

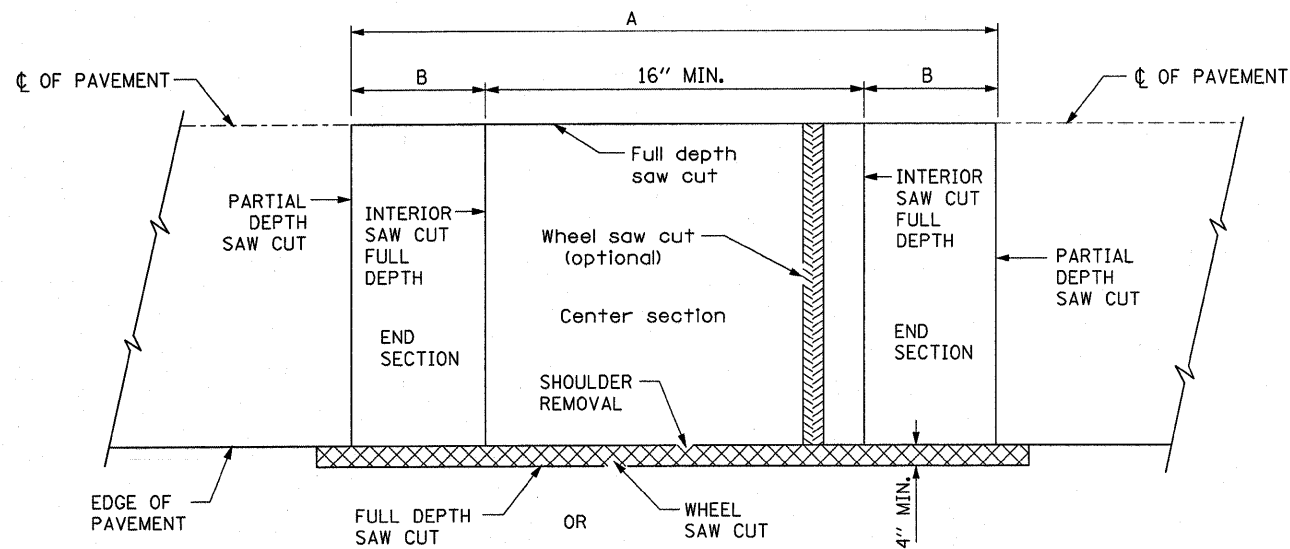
WHEN THE LEFT LANE IS CLOSED, LEFT LANE CLOSED SIGNS SHALL BE SUBSTITUTED FOR THE RIGHT LANE CLOSED SIGNS.

THE FIRST TWO SIGNS AND THE MESSAGE BOARD ARE STATIONARY. THE OTHER SIGNS AND ARROWBOARDS SHALL BE MOVED AS NECESSARY TO MAINTAIN THE REQUIRED DISTANCE FROM THE START OF THE LANE CLOSURE TAPER(S).

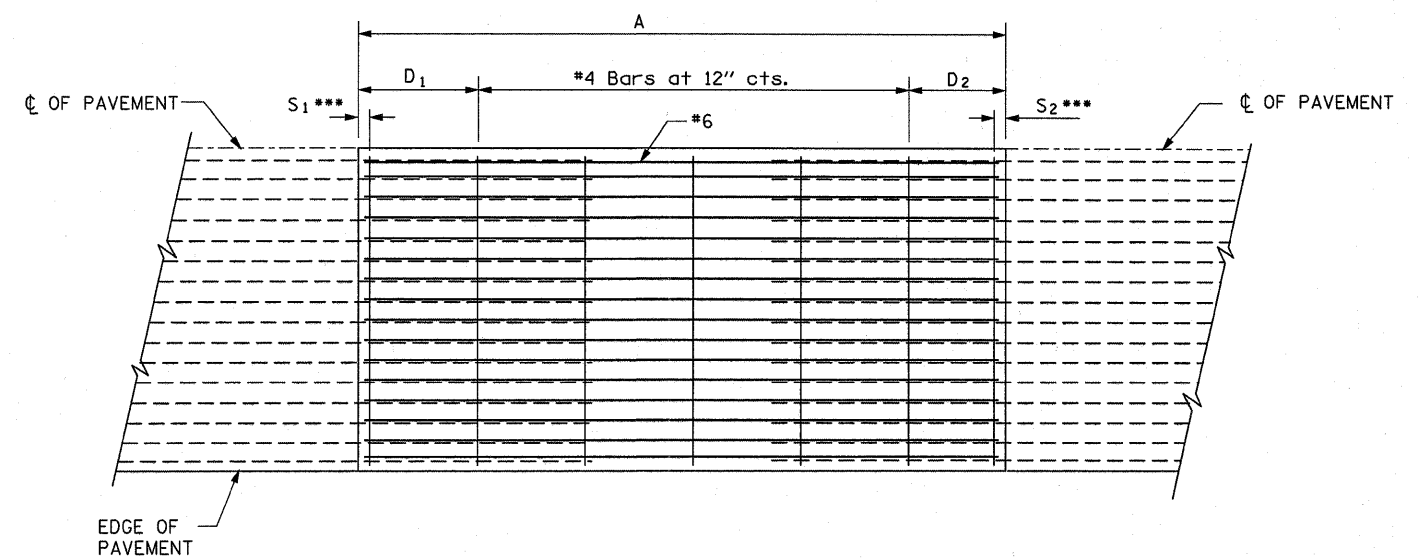
SEE SPECIAL PROVISIONS.

ALL DIMENSIONS ARE IN INCHES UNLESS OTHERWISE SHOWN.

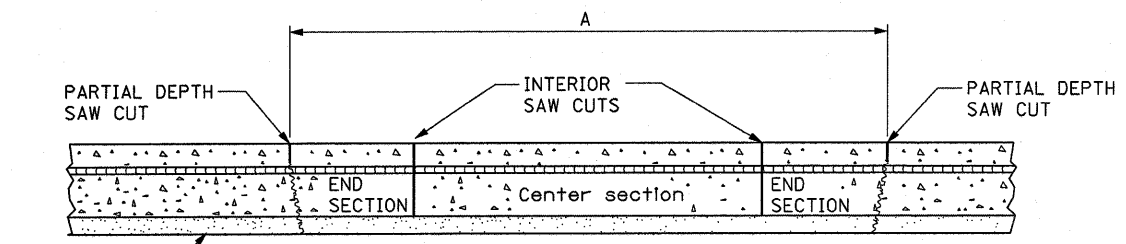
FILE NAME =	USER NAME = braboygo	DESIGNED - RON WOODSHANK	REVISED -	STATE OF ILLINOIS DEPARTMENT OF TRANSPORTATION	TRAFFIC CONTROL AND PROTECTION STANDARD 701400 (SPECIAL)	F.A.I. RTE.	SECTION	COUNTY	TOTAL SHEETS	SHEET NO.
ci:\pwork\pw\dot\braboygo\d0264585\036839-shit-details.dgn	DRAWN - RON WOODSHANK	REVISED -	55			D3 PATCHING 2012-4	LIVINGSTON	11	8	
PLOT SCALE = 58.0000' / IN.	CHECKED -	REVISED -	CONTRACT NO. 66B39							
PLOT DATE = Apr 02, 2011 - 06:45:46 PM	DATE -	REVISED -	[ILLINOIS]							



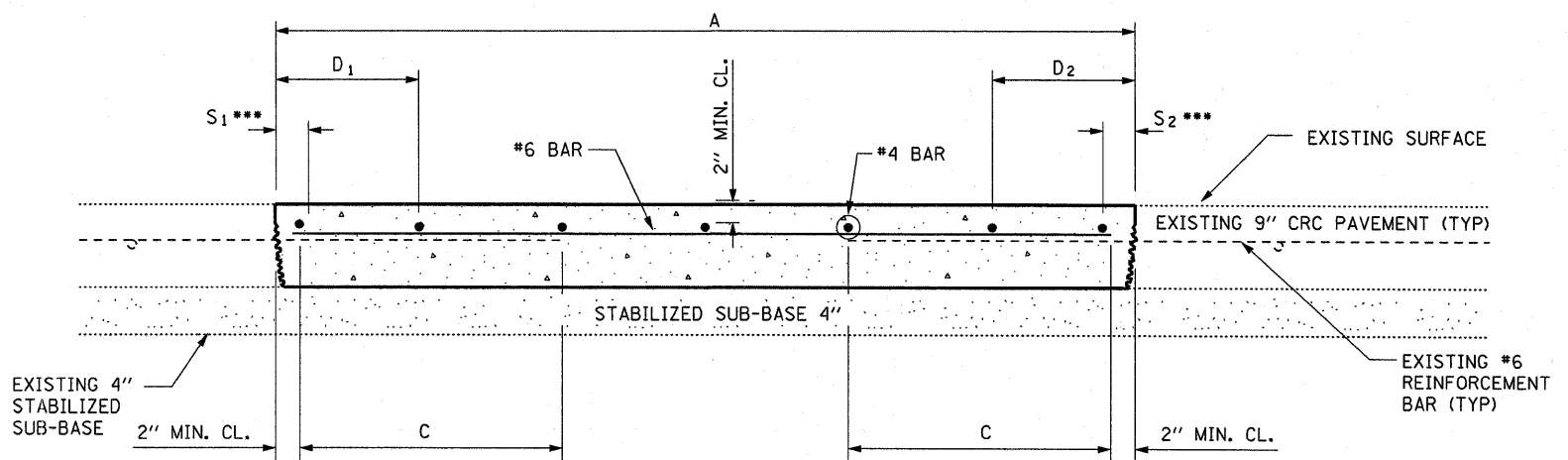
EXISTING PAVEMENT SAWING DETAIL
(AGAINST BITUMINOUS SHOULDER)



PROPOSED PAVEMENT DETAIL
(AGAINST CONCRETE SHOULDER)



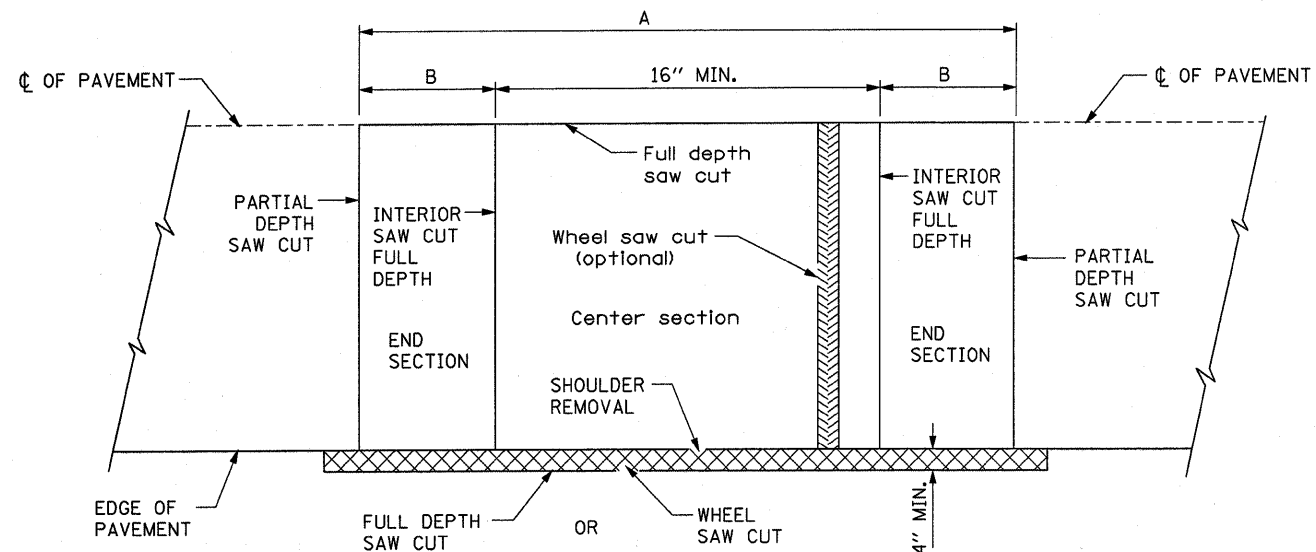
REMOVAL DETAIL



PROPOSED CLASS A PATCHING DETAIL

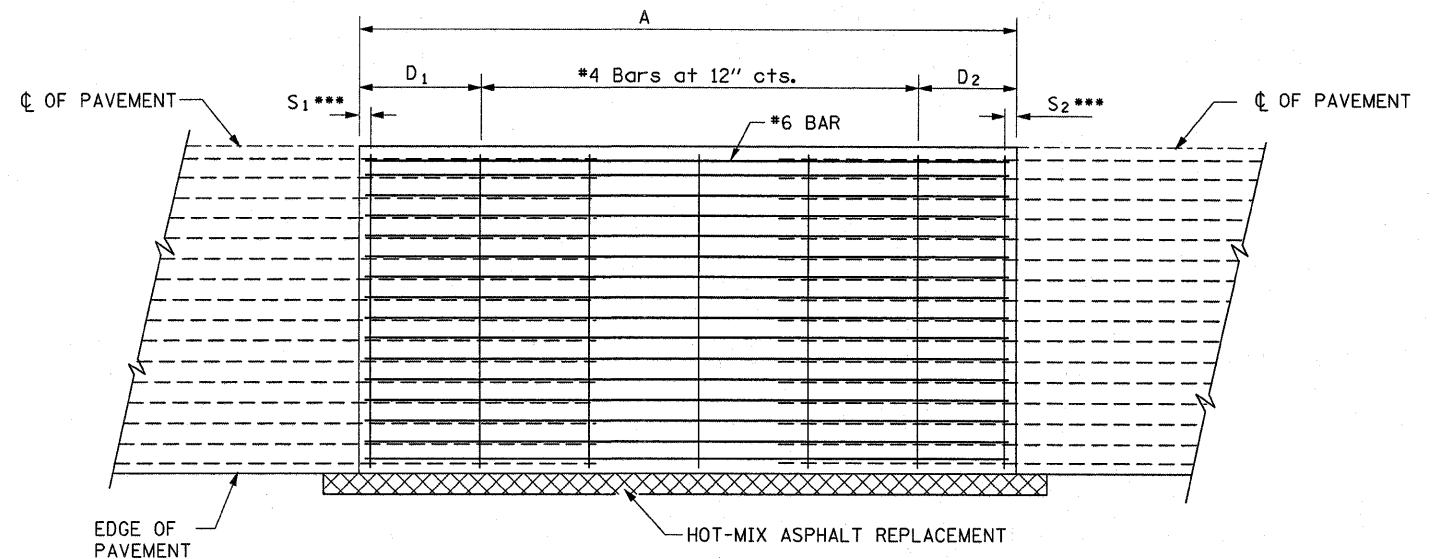
EXISTING LONGITUDINAL REINFORCEMENT BARS	A (min.)	B (min.)	C (min.)
No. 6	6'-0"	21"	19"

- NOTES:**
- EVERY 3rd INTERSECTION MUST BE TIED
 - LAP NEW REINFORCEMENT WITH EXISTING LONGITUDINAL REINFORCEMENT
 - VARIABLES: WHERE S₁ AND S₂ ARE 2 1/2" MIN. AND 12" MAX. D₁ = 2(S₁) AND D₂ = 2(S₂)



EXISTING PAVEMENT SAWING DETAIL

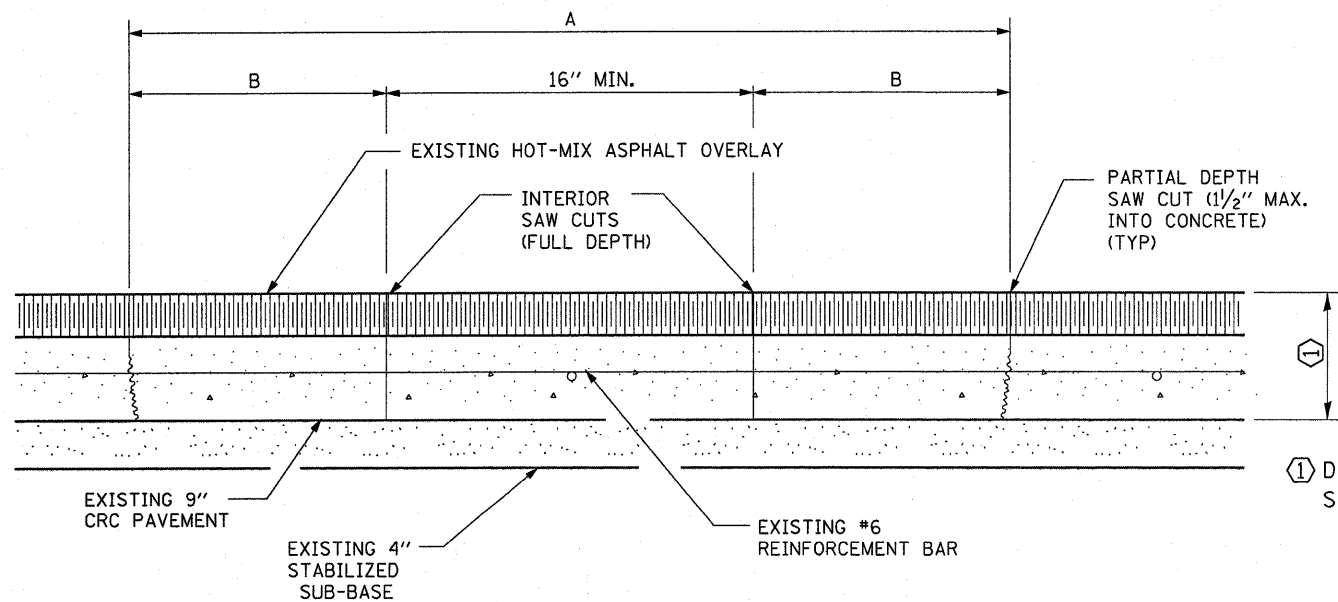
(AGAINST BITUMINOUS SHOULDER)



PROPOSED PAVEMENT DETAIL

(AGAINST BITUMINOUS SHOULDER)

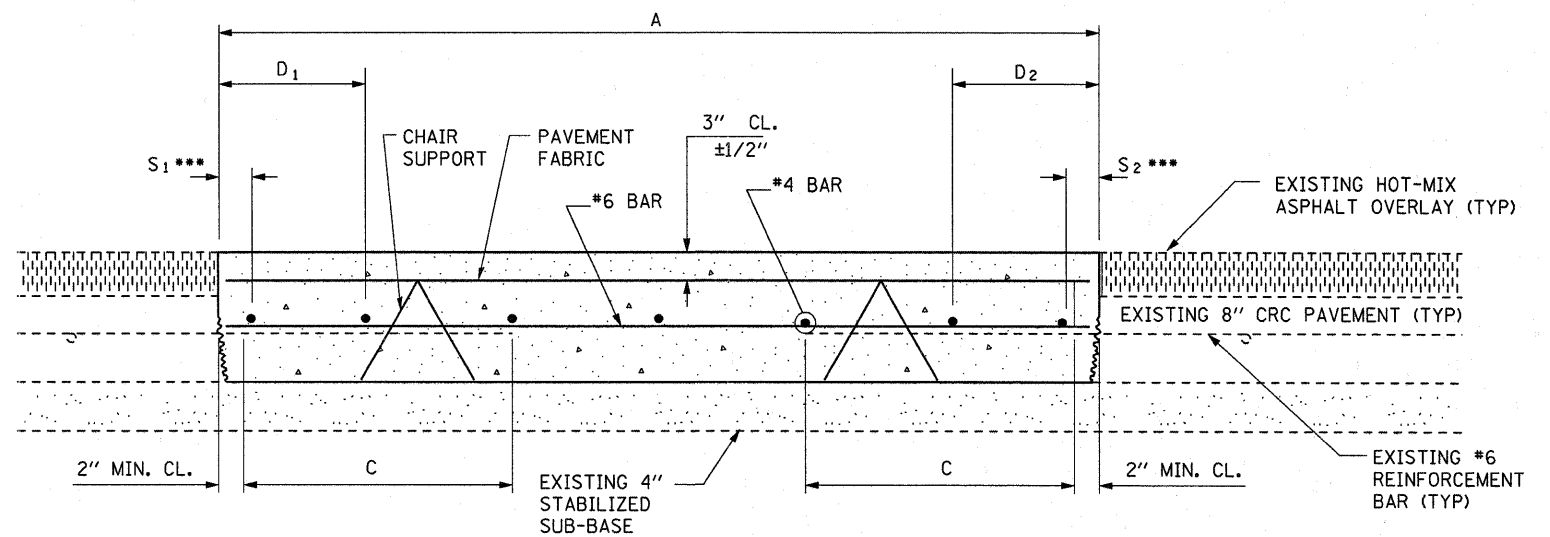
EXISTING LONGITUDINAL REINFORCEMENT BARS	A (min.)	B (min.)	C (min.)
No. 6	6'-0"	24"	19"



EXISTING PAVEMENT

SAW CUTTING DETAIL

① DEPTH VARIES
SEE TYPICAL SECTIONS

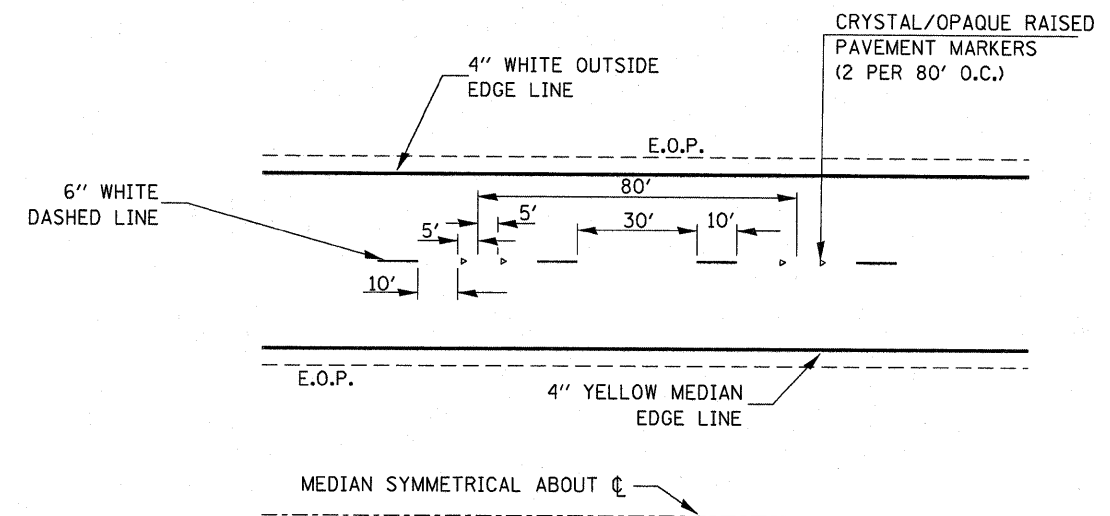
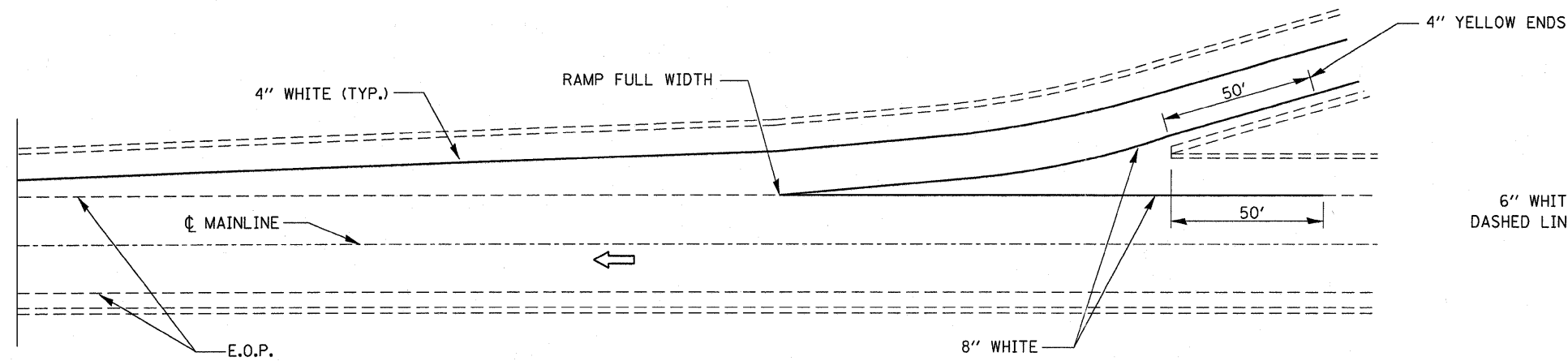


PROPOSED CLASS A PATCHING DETAIL

NOTES:

- * EVERY 3rd INTERSECTION MUST BE TIED
- ** LAP NEW REINFORCEMENT WITH EXISTING LONGITUDINAL REINFORCEMENT
- *** VARIABLES: WHERE S₁ AND S₂ ARE 2 1/2" MIN. AND 12" MAX. D₁ = 2(S₁) AND D₂ = 2(S₂)

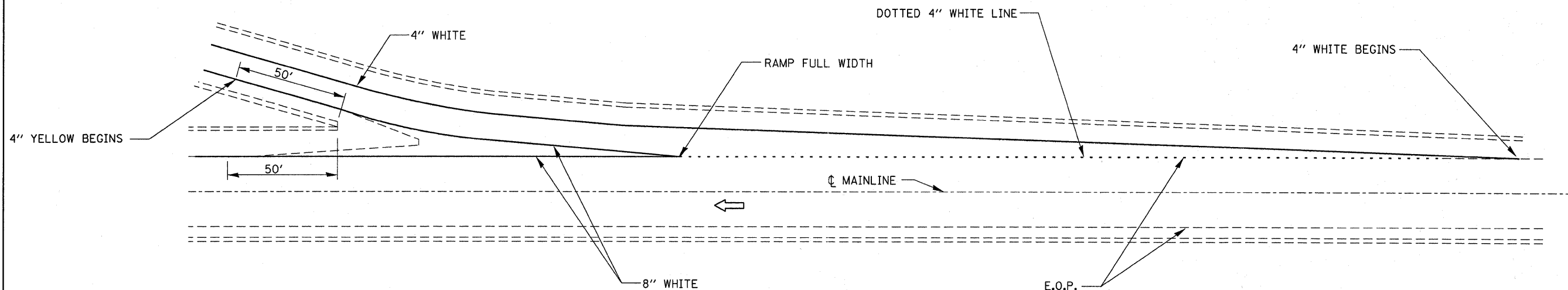
FILE NAME =	USER NAME = braboygc	DESIGNED - RON WOODSHANK	REVISED -	STATE OF ILLINOIS DEPARTMENT OF TRANSPORTATION	CLASS A PATCHING DETAILS WITH HMA OVERLAY	F.A.I. RTE.	SECTION	COUNTY	TOTAL SHEETS	SHEET NO.	
c:\pwork\pwork\dot\braboygc\d0264585\036839-shd-details.dgn	PLT SCALE = 50.0000' / IN.	DRAWN - RON WOODSHANK	REVISED -			55	D3 PATCHING 2012-4	LIVINGSTON	11	10	
PLT DATE = Apr 02, 2011 - 06:45:24 PM	DATE -	CHECKED -	REVISED -			CONTRACT NO. 66B39					
						ILLINOIS					



TYPICAL PAVEMENT MARKING FOR ENTRANCE RAMP TERMINALS

TYPICAL PAVEMENT MARKINGS

NOTE:
 WHEN PATCHING IS ADJACENT TO 8" PAVEMENT MARKING LINE
 THE 8" STRIP SHALL BE REPLACED WITH TWO 4" LINES.
 RAISED REFLECTIVE PAVEMENT MARKERS THAT FALL WITHIN
 PATCHED BOUNDARIES WILL NOT BE REPLACED.



TYPICAL PAVEMENT MARKINGS FOR EXIT RAMP TERMINALS

FILE NAME =	USER NAME = braboygc	DESIGNED - RON WOODSHANK	REVISED -	STATE OF ILLINOIS DEPARTMENT OF TRANSPORTATION	TYPICAL PAVEMENT MARKING	F.A.I. RTE. 55	SECTION D3 PATCHING 2012-4	COUNTY LIVINGSTON	TOTAL SHEETS 11	SHEET NO. 11		
cr:\pw_work\pwsdot\braboygc\d0264585\036839-sht-details.dgn	DRAWN - RON WOODSHANK	REVISI				SCALE: _____	SHEET NO. 1 OF 1 SHEETS	STA. _____ TO STA. _____	CONTRACT NO. 66B39			
PLOT SCALE = 50.0000' / IN.	CHECKED -	REVISI				[ILLINOIS]						
PLOT DATE = Apr 02, 2011 - 06:45:16 PM	DATE -	REVISI										