

F.A.I. RTE.	SECTION	COUNTY	TOTAL SHEETS	SHEET NO.
39	D3 PATCHING 2012-5	LASALLE	14	1
		ILLINOIS	CONTRACT NO. 66B40	

INDEX OF SHEETS

1. COVER SHEET
2. GENERAL NOTES
3. SUMMARY OF QUANTITIES
4. TYPICAL SECTIONS
- 5 - 6. SCHEDULES - NBL
- 7 - 8. SCHEDULES - SBL
9. TRAFFIC CONTROL AND PROTECTION, STANDARD 701400 (SPECIAL)
- 10 - 11. PATCHING DETAILS
12. PAVEMENT MARKING
- 13 - 14. EXISTING APPROACH PAVEMENT FOR INFORMATION ONLY

STANDARDS

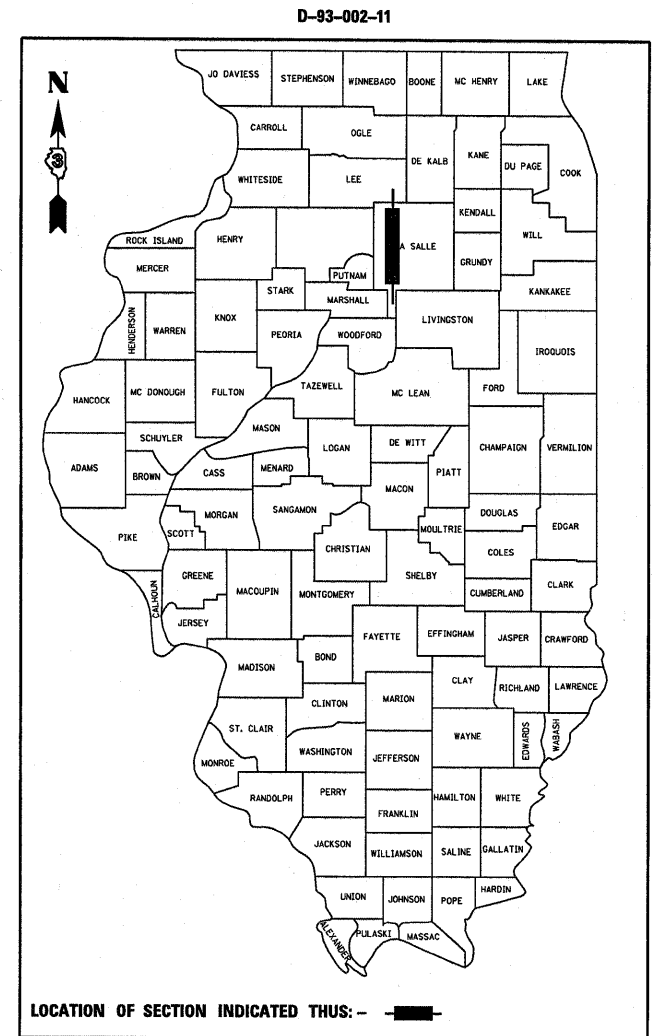
- | | |
|-----------|--|
| 000001-06 | STANDARD SYMBOLS, ABBREVIATIONS AND PATTERNS |
| 001001-02 | AREAS OF REINFORCEMENT BARS |
| 001006 | DECIMAL OF AN INCH AND OF A FOOT |
| 420001-07 | PAVEMENT JOINTS |
| 420101-04 | 24' (7.2 m) JOINTED PCC PAVEMENT |
| 420111-03 | PCC PAVEMENT ROUNDOUTS |
| 701101-02 | OFF-ROAD OPERATIONS MULTILANE, 15' (4.5 m) TO 24" (600 mm) FROM PAVEMENT EDGE |
| 701106-02 | OFF-ROAD OPERATIONS, MULTILANE, MORE THAN 15' (4.5 m) AWAY |
| 701401-06 | LANE CLOSURE, FREEWAY/EXPRESSWAY |
| 701411-07 | LANE CLOSURE, MULTILANE, AT ENTRANCE OR EXIT RAMP FOR SPEEDS \downarrow 45 MPH |
| 701426-04 | LANE CLOSURE, MULTILANE INTERMITTENT OR MOVING OPERATION, FOR SPEEDS \downarrow 45 MPH |
| 701901-01 | TRAFFIC CONTROL DEVICES |

**STATE OF ILLINOIS
DEPARTMENT OF TRANSPORTATION
DIVISION OF HIGHWAYS**

**PROPOSED
HIGHWAY PLANS**

**FAI ROUTE 39 (I-39)
SECTION D3 PATCHING 2012-5**

**LASALLE COUNTY
C-93-112-11
PAVEMENT PATCHING**



FUNCTIONAL CLASSIFICATION
RURAL - INTERSTATE
F.A.I. ROUTE 39 (I-39)
2010 ADT = 18200
P.V = 60.89% M.U. = 26.92% S.U. = 12.19%

**STATE OF ILLINOIS
DEPARTMENT OF TRANSPORTATION
DIVISION OF HIGHWAYS**

SUBMITTED April 4 20 11
Eric S. Threlkenton
DEPUTY DIRECTOR OF HIGHWAYS, REGION ENGINEER

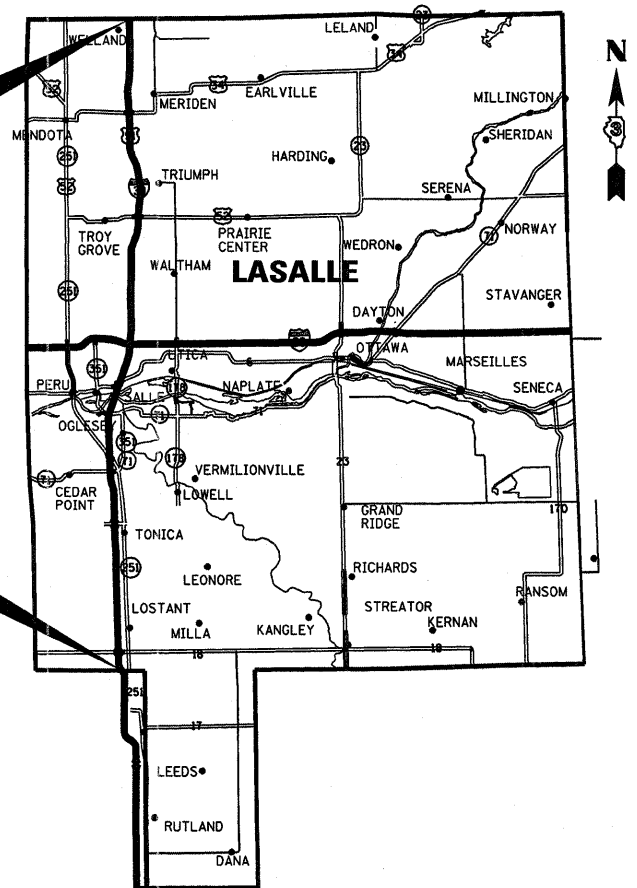
May 13 20 11
Scott E. Stitt P.E.
acting ENGINEER OF DESIGN AND ENVIRONMENT

May 13 20 11
Christine M. Reed
DIRECTOR OF HIGHWAYS, CHIEF ENGINEER

**PRINTED BY THE AUTHORITY
OF THE STATE OF ILLINOIS**

**PROJECT ENDS
LEE COUNTY LINE
(M.P. 77.76)**

**PROJECT BEGINS
MARSHALL COUNTY LINE
(M.P. 40.24)**



LOCATION MAP
NOT TO SCALE
GROSS LENGTH = 198105 FT. = 37.52 MI.
NET LENGTH = 4446 FT. = 0.84 MI

MICROFILMED _____
REEL NUMBER _____
AWARDED _____
RESIDENT ENGINEER _____
AS BUILT CHANGES WERE MADE
ON THE FOLLOWING SHEETS _____

J.U.L.I.E.
JOINT UTILITY LOCATION INFORMATION FOR EXCAVATION
1-800-892-0123

DISTRICT 3 NO. (815) 434-6131
PROJECT ENGINEER: JOE KANNEL, P.E.
UNIT CHIEF: PAT BRABOY
TOWNSHIP: VARIOUS
CONTRACT NO. 66B40

GENERAL NOTES

PLAN DIMENSIONS AND DETAILS RELATIVE TO EXISTING ROADWAY OR STRUCTURE HAVE BEEN TAKEN FROM EXISTING PLANS AND ARE SUBJECT TO NOMINAL CONSTRUCTION VARIATIONS. IT SHALL BE THE CONTRACTOR'S RESPONSIBILITY TO VERIFY SUCH DIMENSIONS AND DETAILS IN THE FIELD AND TO MAKE NECESSARY APPROVED ADJUSTMENTS PRIOR TO CONSTRUCTION OR ORDERING OF MATERIALS. SUCH VARIATIONS SHALL NOT BE CAUSE FOR ADDITIONAL COMPENSATION FOR A CHANGE IN THE SCOPE OF THE WORK, HOWEVER, THE CONTRACTOR WILL BE PAID FOR THE QUANTITY ACTUALLY FURNISHED AT THE UNIT BID FOR THE WORK.

FOR STABILIZATION, ALL TYPE III BARRICADES SHALL REQUIRE A MINIMUM OF FOUR SAND BAGS PER BARRICADE.

ABANDONED UNDERGROUND UTILITIES THAT CONFLICT WITH CONSTRUCTION SHALL BE DISPOSED OF OUTSIDE THE LIMITS OF THE RIGHT OF WAY ACCORDING TO ARTICLE 202.03 OF THE STANDARD SPECIFICATIONS AND AS DIRECTED BY THE ENGINEER. THIS WORK WILL NOT BE PAID FOR SEPARATELY BUT SHALL BE INCLUDED IN THE COST OF CLASS A PATCHING.

ANY REFERENCE TO A STANDARD IN THESE PLANS SHALL BE INTERPRETED TO MEAN THE EDITION AS INDICATED BY THE SUBNUMBER LISTED ON THE INDEX OF SHEETS OR THE COPY OF THE STANDARD INCLUDED IN THESE PLANS.

EXISTING REINFORCEMENT BARS EXTENDING INTO REMOVAL AREA SHALL BE CLEANED, STRAIGHTENED AND INCORPORATED INTO THE NEW CONSTRUCTION. ANY REINFORCEMENT BARS THAT ARE DAMAGED DURING CONCRETE REMOVAL SHALL BE REPLACED WITH AN APPROVED BAR SPLICER OR ANCHORAGE SYSTEM. COST INCLUDED WITH CONCRETE REMOVAL.

THE CONTRACTOR SHALL CONTACT JULIE AT LEAST 48 HOURS PRIOR TO EXCAVATION TO DETERMINE WHICH UTILITIES ARE IN THE AREA.

DATE: 4-4-11

PREPARED BY: *Don Brown*
DISTRICT STUDIES & PLANS ENGINEER

EXAMINED BY: *Michael J. ...*
DISTRICT CONSTRUCTION ENGINEER

Wayne Phillips
DISTRICT MATERIALS ENGINEER

Bruce A. Heber 4/4/11
DISTRICT OPERATIONS ENGINEER

FILE NAME =	USER NAME = braboypc	DESIGNED - RON WOODSHANK	REVISED - -----	STATE OF ILLINOIS DEPARTMENT OF TRANSPORTATION	GENERAL NOTES	F.A.I. RTE.	SECTION	COUNTY	TOTAL SHEETS	SHEET NO.
c:\pw_work\pw\dot\braboypc\0264562\0366840-shd-details.dgn	DRAWN - RON WOODSHANK	REVISED - -----	39			D3 PATCHING 2012-5	LASALLE	14	2	
PLOT SCALE = 50,0000 ' / IN.	CHECKED - ---	REVISED - -----	CONTRACT NO. 66B40							
PLOT DATE = Apr 02, 2011 - 06:51:40 PM	DATE - -----	REVISED - -----	ILLINOIS							
		SCALE: -----		SHEET NO. ___ OF ___ SHEETS		STA. ----- TO STA. -----				

SUMMARY OF QUANTITIES

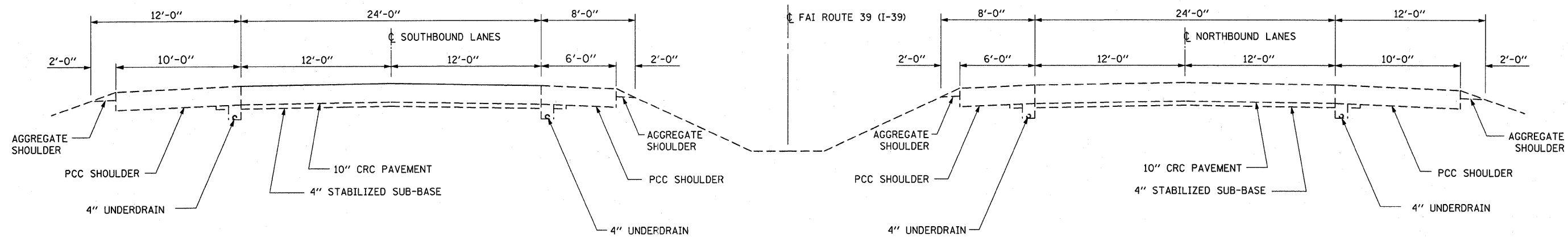
CONSTRUCTION CODE TYPE: 0005

RURAL
100% STATE

CODE NO.	ITEM	UNIT	TOTAL QUANTITY
44200553	CLASS A PATCHES, TYPE II, 10 INCH	SO YD	1027
44213000	PATCHING REINFORCEMENT	SO YD	1027
44213200	SAW CUTS	FOOT	8432
67100100	MOBILIZATION	L SUM	1
70100420	TRAFFIC CONTROL AND PROTECTION, STANDARD 701411	EACH	21
70103815	TRAFFIC CONTROL SURVEILLANCE	CAL DA	15
78005110	EPOXY PAVEMENT MARKING - LINE 4"	FOOT	770
78005130	EPOXY PAVEMENT MARKING - LINE 6"	FOOT	208
X7010805	TRAFFIC CONTROL AND PROTECTION, STANDARD 701401 (SPECIAL)	L SUM	1

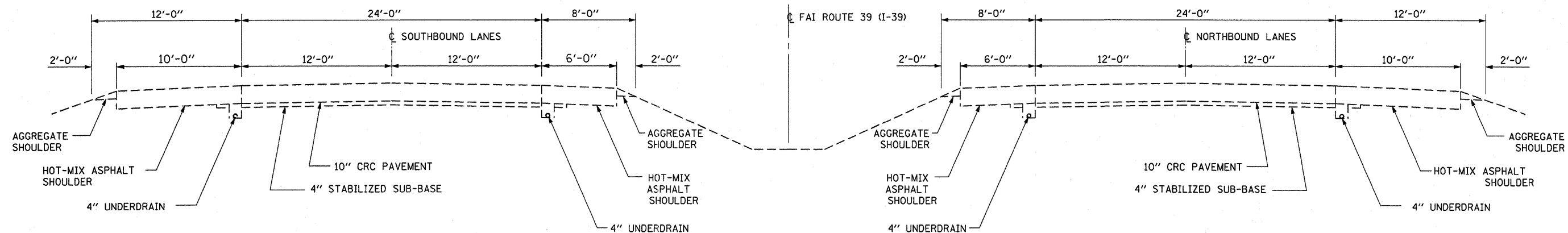
• SPECIALTY ITEM

FILE NAME =	USER NAME = braboypc	DESIGNED - RON WOODSHANK	REVISED -	STATE OF ILLINOIS DEPARTMENT OF TRANSPORTATION	SUMMARY OF QUANTITIES	F.A.I. RTE.	SECTION	COUNTY	TOTAL SHEETS	SHEET NO.
ci:\pwork\pwork\braboypc\0264562\0366640-shr-details.dgn	DRAWN - RON WOODSHANK	REVISED -	39			D3 PATCHING 2012-5	LASALLE	14	3	
PLDT SCALE = 50.0000' / IN.	CHECKED -	REVISED -	CONTRACT NO. 66B40							
PLDT DATE = Apr 02, 2011 - 04:51:39 PM	DATE -	REVISED -	SCALE: _____	SHEET NO. ____ OF ____ SHEETS	STA. _____ TO STA. _____	ILLINOIS				



TYPICAL SECTIONS

M.P. 41.24 TO M.P. 55.36



TYPICAL SECTIONS

M.P. 55.36 TO M.P. 77.76

FILE NAME = c:\pwwork\pwwork\braboyco\d0264562\0385840-shr-detail.dgn	USER NAME = braboyco	DESIGNED - RON WOODSHANK	REVISED -	STATE OF ILLINOIS DEPARTMENT OF TRANSPORTATION	TYPICAL SECTIONS	F.A.I. RTE. 39	SECTION D3 PATCHING 2012-5	COUNTY LASALLE	TOTAL SHEETS 14	SHEET NO. 4
	PLOT SCALE = 50.0000' / IN.	DRAWN - RON WOODSHANK	REVISED -			CONTRACT NO. 66B40				
	PLOT DATE = Apr 02, 2011 - 04:38:16 PM	CHECKED -	REVISED -			ILLINOIS				
	DATE -	REVISED -	SCALE: _____ SHEET NO. ___ OF ___ SHEETS STA. _____ TO STA. _____							

PATCHING SCHEDULE - NBL							
LOCATION BY LOG MILE	PASSING LANE			DRIVING LANE			REMARKS
	CLASS A PATCHING TYPE II SQ YD	PATCH REINF. SQ YD	SAW CUTS FOOT	CLASS A PATCHING TYPE II SQ YD	PATCH REINF. SQ YD	SAW CUTS FOOT	
40.24							MARSHALL COUNTY LINE
40.25	8	8	66	8	8	66	
40.251	8	8	66				
40.74				8	8	66	
41.64	8	8	66				
43.74				8	8	66	
44.89				8	8	66	
44.90				8	8	66	
44.94				8	8	66	
44.95				8	8	66	
44.96				8	8	66	
46.62				8	8	66	
46.69				8	8	66	
47.44				8	8	66	
47.78	8	8	66				
47.79	8	8	66				
47.84	8	8	66				
48.34				8	8	66	
50.63				8	8	66	
52.34				8	8	66	
53.16				8	8	66	
53.88	8	8	66				
54.15				8	8	66	
54.24				8	8	66	
55.79				8	8	60	
56.36				8	8	60	
57.49				8	8	60	
57.72				8	8	60	
57.99				8	8	60	
58.31				8	8	60	
58.74	8	8	60	8	8	60	
58.76				8	8	60	
59.10	8	8	60				
60.76	8	8	60				
61.96				8	8	60	
64.12				8	8	60	
64.16				8	8	60	
64.64	8	8	60				
66.09				8	8	60	
66.63				8	8	60	
66.84	8	8	60				
67.24				8	8	60	
69.38				8	8	60	
69.39				8	8	60	
70.37				8	8	60	
70.59				8	8	60	
70.61				8	8	60	
71.61				8	8	60	
72.03	8	8	60	8	8	60	
72.04				8	8	60	
72.09				8	8	60	
72.24	8	8	60				
73.31				8	8	60	
73.77				8	8	60	
74.11				8	8	60	
75.43				8	8	60	
75.84				8	8	60	
75.94				8	8	60	
76.07				8	8	60	
77.76							LEE COUNTY LINE
TOTALS	112	112	882	376	376	2922	

PAVEMENT MARKING SCHEDULE - NBL				
LOCATION MILE POST	EPOXY PAVEMENT MARKING TYPE 1, LINE 4"		EPOXY PAVEMENT MARKING TYPE 1, LINE 6"	REMARKS
	YELLOW	WHITE	WHITE	
40.24				MARSHALL COUNTY LINE
40.25	6	6	2	
40.251	6			
40.74		6	2	
41.64	6			
43.74		6	2	
44.89		6	2	
44.90		6	2	
44.94		6	2	
44.95		6	2	
44.96		6	2	
46.62		6	2	
46.69		6	2	
47.44		6	2	
47.78	6			
47.79	6			
47.84	6			
48.34		6	2	
50.63		6	2	
52.34		6	2	
53.16		6	2	
53.88	6			
54.15		6	2	
54.24		6	2	
55.79		6	2	
56.36		6	2	
57.49		6	2	
57.72		6	2	
57.99		6	2	
58.31		6	2	
58.74	6	6	2	
58.76		6	2	
59.10	6			
60.76	6			
61.96		6	2	
64.12		6	2	
64.16		6	2	
64.64	6			
66.09		6	2	
66.63		6	2	
66.84	6			
67.24		6	2	
69.38		6	2	
69.39		6	2	
70.37		6	2	
70.59		6	2	
70.61		6	2	
71.61		6	2	
72.03	6	6	2	
72.04		6	2	
72.09		6	2	
72.24	6			
73.31		6	2	
73.77		6	2	
74.11		6	2	
75.43		6	2	
75.84		6	2	
75.94		6	2	
76.07		6	2	
77.76				LEE COUNTY LINE
NB SUBTOTALS	84	282		
TOTALS		366	94	

FILE NAME =	USER NAME = braboypc	DESIGNED - RON WOODSHANK	REVISED - -----
c:\pwork\pwork\braboypc\d0264562\0385840-shit-details.dgn		DRAWN - RON WOODSHANK	REVISED - -----
	PLLOT SCALE = 50.0000' / IN.	CHECKED - ----	REVISED - -----
	PLLOT DATE = Apr 02, 2011 - 06:51:31 PM	DATE - -----	REVISED - -----

STATE OF ILLINOIS
DEPARTMENT OF TRANSPORTATION

SCHEDULES - NBL

SCALE: _____ SHEET NO. 2 OF 2 SHEETS STA. _____ TO STA. _____

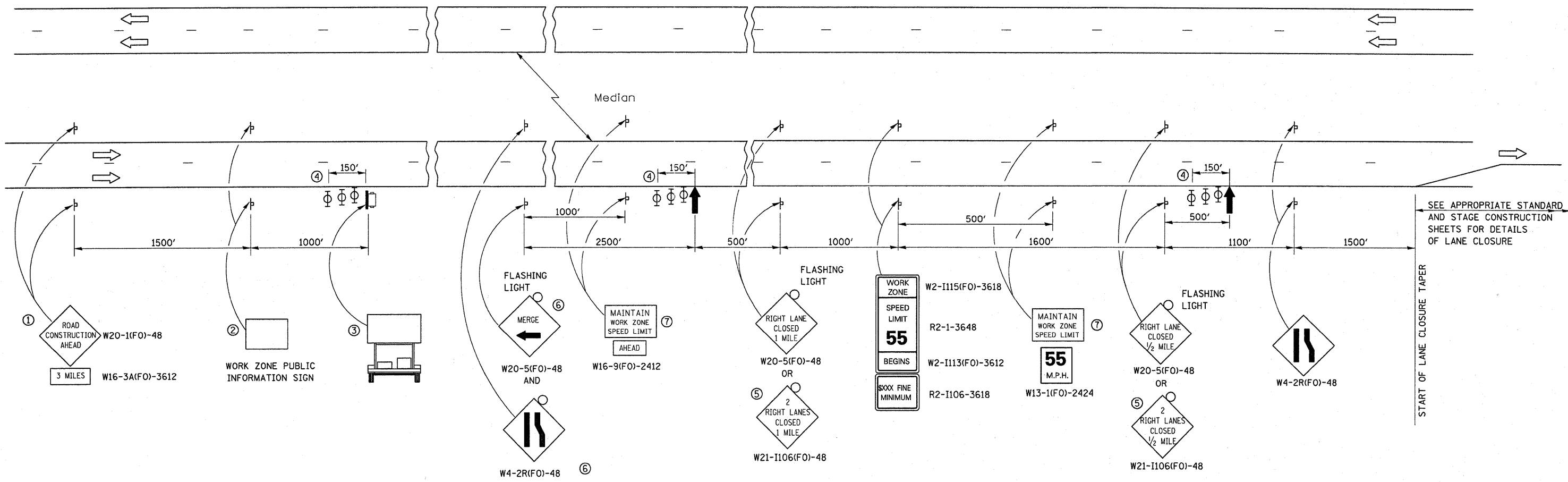
F.A.I. RTE.	SECTION	COUNTY	TOTAL SHEETS	SHEET NO.
39	D3 PATCHING 2012-5	LASALLE	14	6
CONTRACT NO. 66B40				

[ILLINOIS]

PATCHING SCHEDULE - SBL							REMARKS
LOCATION BY MILE MARKER	PASSING LANE			DRIVING LANE			
	CLASS A PATCHING TYPE II SQ YD	PATCH REINF. SQ YD	SAW CUTS FOOT	CLASS A PATCHING TYPE II SQ YD	PATCH REINF. SQ YD	SAW CUTS FOOT	
77.76			0			0	LEE COUNTY LINE
77.67	0	0	0	8	8	60	
77.56	0	0	0	8	8	60	
76.94	0	0	0	8	8	60	
76.21	0	0	0	8	8	60	
75.96	0	0	0	8	8	60	
75.95	0	0	0	8	8	60	
75.14	0	0	0	8	8	60	
75.01	0	0	0	8	8	60	
74.18	0	0	0	8	8	60	
74.15	0	0	0	8	8	60	
73.95	0	0	0	8	8	60	
73.66	0	0	0	8	8	60	
73.25	0	0	0	8	8	60	
73.23	0	0	0	8	8	60	
72.17	0	0	0	8	8	60	
71.76	8	8	60	8	8	60	
72.14	8	8	60	0	0	0	
72.12	0	0	0	8	8	60	
71.78	0	0	0	8	8	60	
71.60	0	0	0	8	8	60	
70.70	0	0	0	8	8	60	
69.67	0	0	0	8	8	60	
69.47	0	0	0	8	8	60	
69.38	0	0	0	8	8	60	
69.08	0	0	0	8	8	60	
69.07	0	0	0	8	8	60	
68.66	0	0	0	8	8	60	
68.36	8	8	60	0	0	0	
68.26	8	8	60	8	8	60	
68.16	0	0	0	8	8	60	
SUBTOTALS	32	32	240	224	224	1680	

PATCHING SCHEDULE - SBL							REMARKS
LOCATION BY MILE MARKER	PASSING LANE			DRIVING LANE			
	CLASS A PATCHING TYPE II SQ YD	PATCH REINF. SQ YD	SAW CUTS FOOT	CLASS A PATCHING TYPE II SQ YD	PATCH REINF. SQ YD	SAW CUTS FOOT	
68.14	0	0	0	8	8	60	
68.06	0	0	0	8	8	60	
67.95	0	0	0	8	8	60	
65.33	0	0	0	8	8	60	
64.84	0	0	0	8	8	60	
64.09	0	0	0	8	8	60	
63.49	0	0	0	8	8	60	
63.43	8	8	60	8	8	60	
62.96	0	0	0	8	8	60	
62.22	0	0	0	8	8	60	
61.76	0	0	0	8	8	60	
60.64	0	0	0	8	8	60	
60.44	0	0	0	8	8	60	
59.91	8	8	60	0	0	0	
59.76	0	0	0	8	8	60	
59.66	0	0	0	8	8	60	
58.61	0	0	0	8	8	60	
58.60	0	0	0	8	8	60	
55.76	0	0	0	8	8	60	
55.66	8	8	60	8	8	60	
55.47	0	0	0	8	8	60	
55.46	0	0	0	11	11	64	
55.37	0	0	0	8	8	60	
55.36	0	0	0	8	8	66	
51.68	0	0	0	8	8	66	
49.49	8	8	66	0	0	0	
49.42	8	8	66	0	0	0	
49.33	0	0	0	8	8	66	
49.23	8	8	66	0	0	0	
48.52	0	0	0	8	8	66	
47.55	0	0	0	8	8	66	
44.94	0	0	0	8	8	66	
44.45	0	0	0	8	8	66	
40.24			0	0	0	0	
SUBTOTALS	48	48	378	235	235	1786	
TOTALS	80	80	618	459	459	3466	

PAVEMENT MARKING SCHEDULE - SBL				
LOCATION MILE POST	EPOXY PAVEMENT MARKING TYPE 1, LINE 4"		EPOXY PAVEMENT MARKING TYPE 1, LINE 6"	REMARKS
	YELLOW	WHITE	WHITE	
77.76				LEE COUNTY LINE
77.67		6	2	
77.56		6	2	
76.94		6	2	
76.21		6	2	
75.96		6	2	
75.95		6	2	
75.14		6	2	
75.01		6	2	
74.18		6	2	
74.15		6	2	
73.95		6	2	
73.66		6	2	
73.25		6	2	
73.23		6	2	
72.17		6	2	
71.76	6	6	2	
72.14	6			
72.12		6	2	
71.78		6	2	
71.60		6	2	
70.70		6	2	
69.67		6	2	
69.47		6	2	
69.38		6	2	
69.08		6	2	
69.07		6	2	
68.66		6	2	
68.36	6			
68.26	6	6	2	
68.16		6	2	
68.14		6	2	
68.06		6	2	
67.95		6	2	
65.33		6	2	
64.84		6	2	
64.09		6	2	
63.49		6	2	
63.43	6	6	2	
62.96		6	2	
62.22		6	2	
61.76		6	2	
60.64		6	2	
60.44		6	2	
59.91	6			
59.76		6	2	
59.66		6	2	
58.61		6	2	
58.60		6	2	
55.76		6	2	
55.66	6	6	2	
55.47		6	2	
55.46		8	2	
55.37		6	2	
55.36		6	2	
51.68		6	2	
49.49	6			
49.42	6			
49.33		6	2	
49.23	6			
48.52		6	2	
47.55		6	2	
44.94		6	2	
44.45		6	2	
40.24				MARSHALL COUNTY LINE
SB SUBTOTALS	60	344		
TOTALS		404	114	

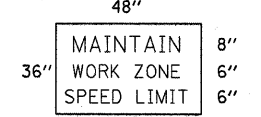


SEE APPROPRIATE STANDARD AND STAGE CONSTRUCTION SHEETS FOR DETAILS OF LANE CLOSURE

START OF LANE CLOSURE TAPER

- ① THE ROAD CONSTRUCTION AHEAD SIGN SHALL BE LOCATED 3 MILES IN ADVANCE OF THE PROJECT LIMITS.
- ② THE MESSAGE AND SIZE OF THE WORK ZONE PUBLIC INFORMATION SIGN SHALL BE AS SPECIFIED BY THE DEPARTMENT.
- ③ TO BE PLACED IN THE MEDIAN WHEN FEASIBLE. THE MESSAGE BOARD SHALL BE USED TO DISPLAY STATUS OF LANES WITHIN THE PROJECT. THE PRIMARY MESSAGES SHALL BE:
"RIGHT LANE CLOSED" / " x MILES AHEAD"
"LEFT LANE CLOSED" / " x MILES AHEAD"
"ALL LANES OPEN"
- ④ THREE, TYPE II BARRICADES, DRUMS, OR VERTICAL BARRICADES AT 50' CENTERS.
- ⑤ THIS SIGN SHALL BE USED WHEN 2 LANES ARE CLOSED.
- ⑥ WHEN THE LEFT LANE IS CLOSED, SWITCH THESE TWO SIGNS AND THE DIRECTION OF THE MERGE ARROW.

- ⑦ 48"x36" FLUORESCENT ORANGE SIGN WITH BLACK LETTERS.



- ↑ ARROW BOARD
- ☐ PORTABLE CHANGEABLE MESSAGE SIGN
- ⊥ SIGN
- ⊕ TYPE II BARRICADE, DRUM, OR VERTICAL BARRICADE WITH MONODIRECTIONAL FLASHING LIGHT

GENERAL NOTE:

THIS STANDARD IS USED WHERE AT ANY TIME A LANE IS CLOSED ON A FREEWAY/EXPRESSWAY.

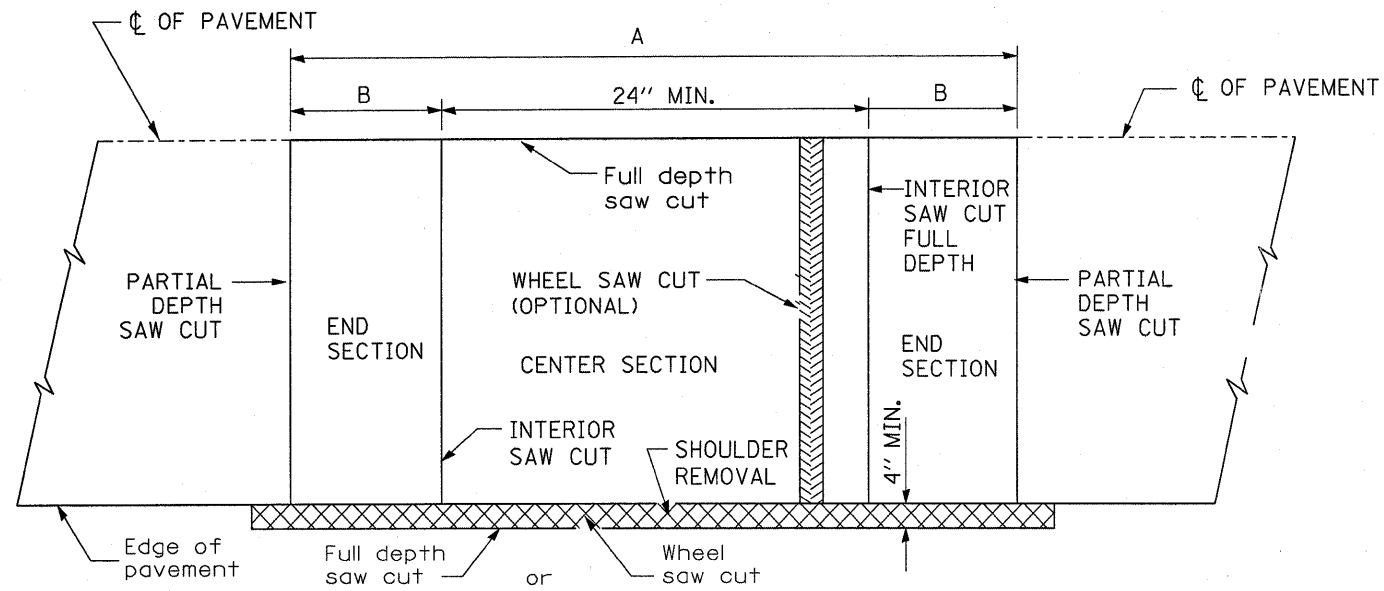
WHEN THE LEFT LANE IS CLOSED, LEFT LANE CLOSED SIGNS SHALL BE SUBSTITUTED FOR THE RIGHT LANE CLOSED SIGNS.

THE FIRST TWO SIGNS AND THE MESSAGE BOARD ARE STATIONARY. THE OTHER SIGNS AND ARROWBOARDS SHALL BE MOVED AS NECESSARY TO MAINTAIN THE REQUIRED DISTANCE FROM THE START OF THE LANE CLOSURE TAPER(S).

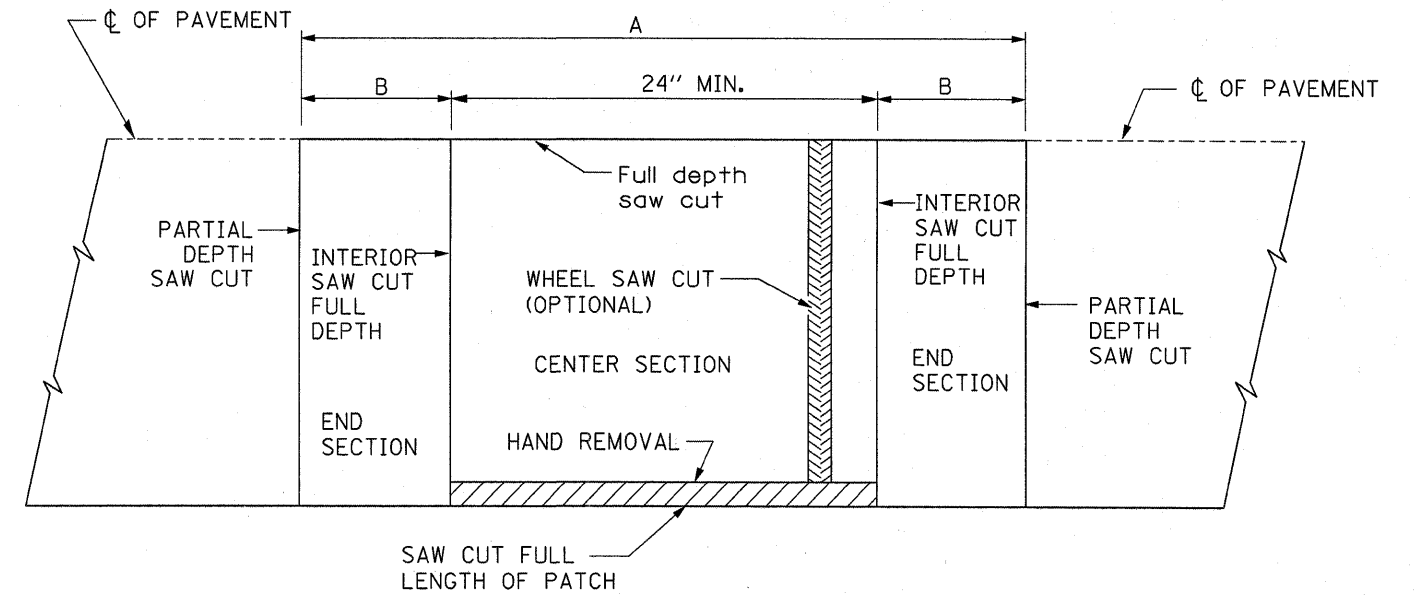
SEE SPECIAL PROVISIONS.

ALL DIMENSIONS ARE IN INCHES UNLESS OTHERWISE SHOWN.

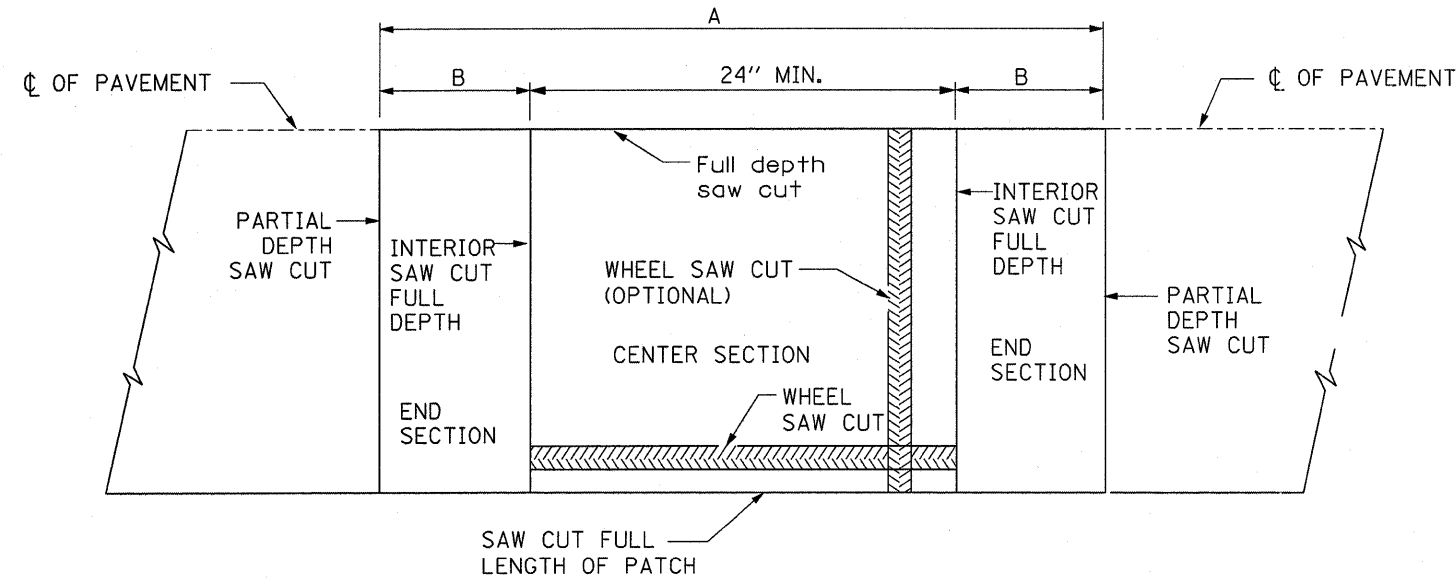
FILE NAME =	USER NAME = braboypc	DESIGNED - RON WOODSHANK	REVISED -	STATE OF ILLINOIS DEPARTMENT OF TRANSPORTATION	TRAFFIC CONTROL AND PROTECTION STANDARD 701400 (SPECIAL) DETAILS	F.A.I. RTE.	SECTION	COUNTY	TOTAL SHEETS	SHEET NO.
c:\pw_work\pwwdot\braboypc\0264562\0366848-sht-details.dgn	DRAWN - RON WOODSHANK	REVISED -	39			D3 PATCHING 2012-5	LASALLE	14	9	
PLOT SCALE = 50.0000' / IN.	CHECKED -	REVISED -	CONTRACT NO. 66B40							
PLOT DATE = Apr 02, 2011 - 04:37:38 PM	DATE -	REVISED -	ILLINOIS							
					SCALE: _____	SHEET NO. 1 OF 1 SHEETS		STA. _____ TO STA. _____		



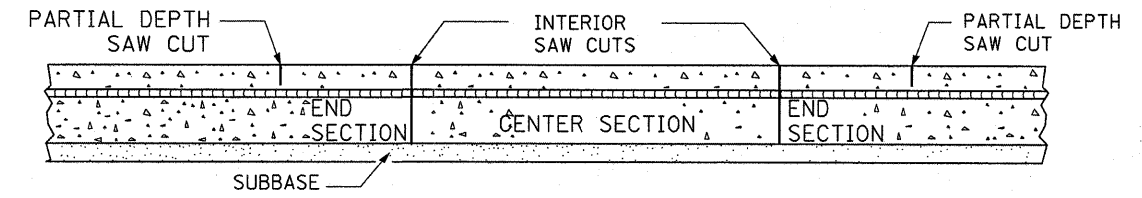
PAVEMENT SAWING DETAIL
(HMA SHOULDER)



PAVEMENT SAWING DETAIL
(PCC SHOULDER)



ALTERNATE SAWING DETAIL
(PCC SHOULDER)



SAW CUT DETAIL

EXISTING LONGITUDINAL REINFORCEMENT BARS	A (min.)	B (min.)	C (min.)
No. 7	6'-0"	24"	22"

NOTES:

- * EVERY 3rd INTERSECTION MUST BE TIED
- ** LAP NEW REINFORCEMENT WITH EXISTING LONGITUDINAL REINFORCEMENT
- *** VARIABLES: WHERE S₁ AND S₂ ARE 2 1/2" MIN. AND 12" MAX. D₁ = 2(S₁) AND D₂ = 2(S₂)

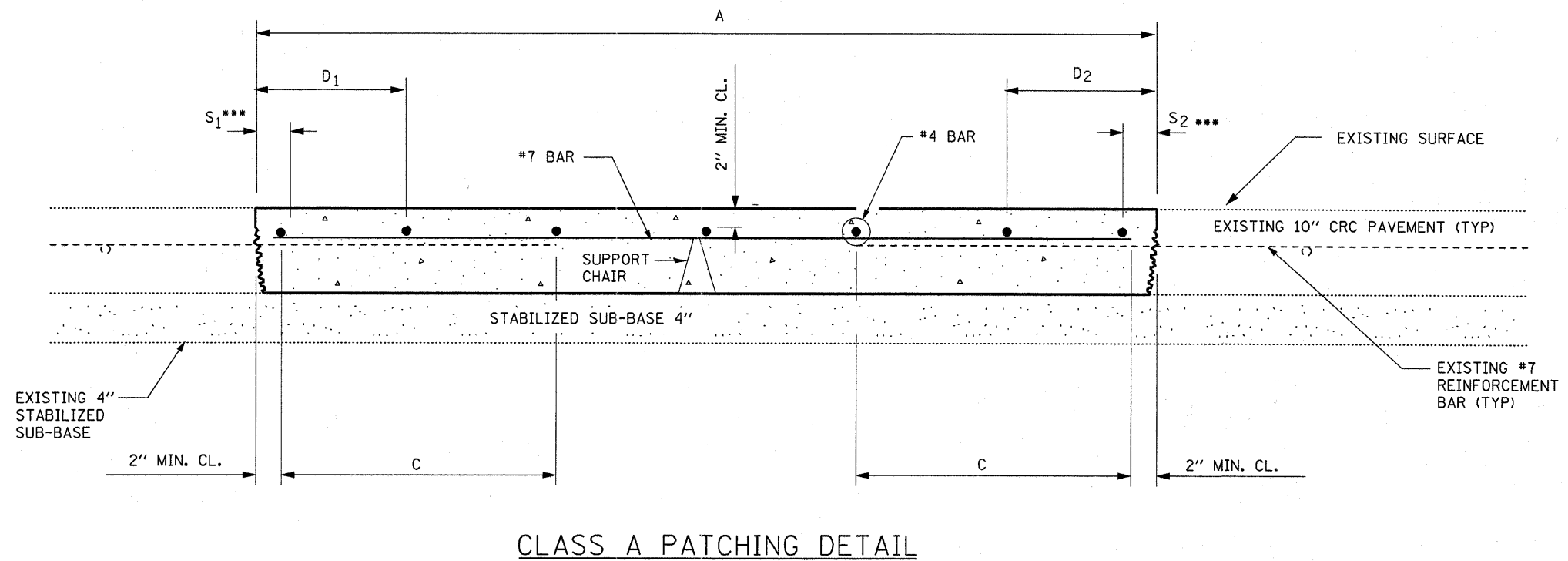
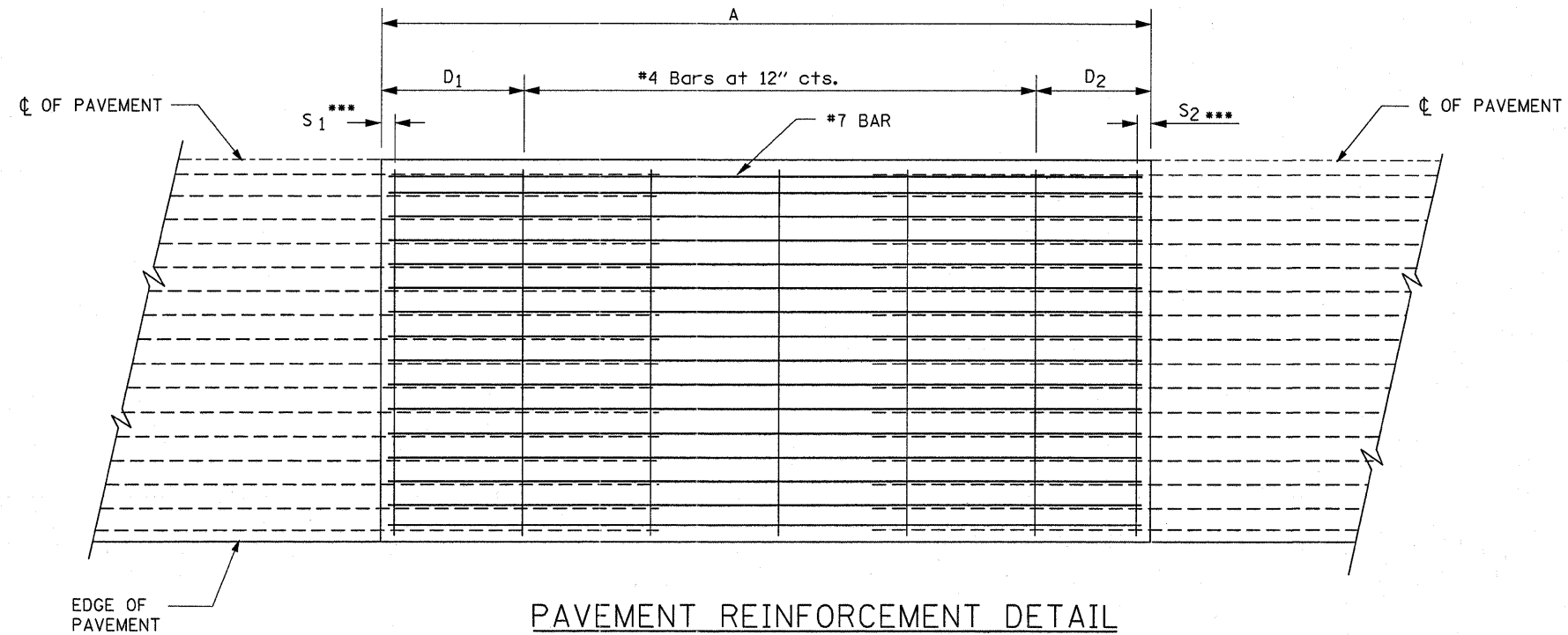
FILE NAME =	USER NAME = braboypc	DESIGNED - RON WOODSHANK	REVISED -
ct:\pw_work\pwwork\braboypc\0264562\0365840-sht-details.dgn		DRAWN - RON WOODSHANK	REVISED -
	PLOT SCALE = 50.0000' / IN.	CHECKED -	REVISED -
	PLOT DATE = Apr 02, 2011 - 04:37:30 PM	DATE -	REVISED -

STATE OF ILLINOIS
DEPARTMENT OF TRANSPORTATION

PATCHING DETAILS

SCALE: SHEET NO. 1 OF 2 SHEETS STA. TO STA.

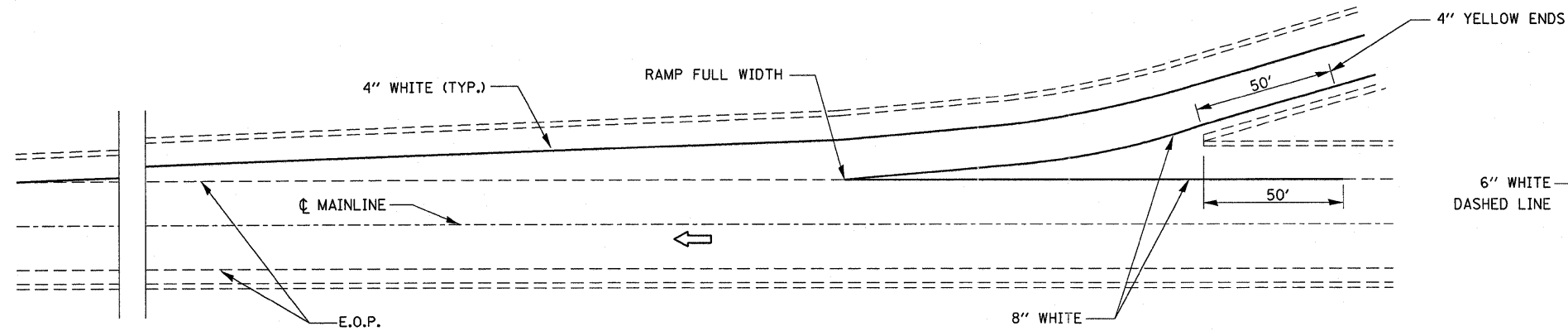
F.A.T. RTE.	SECTION	COUNTY	TOTAL SHEETS	SHEET NO.
39	D3 PATCHING 2012-5	LASALLE	14	10
			CONTRACT NO. 66B40	



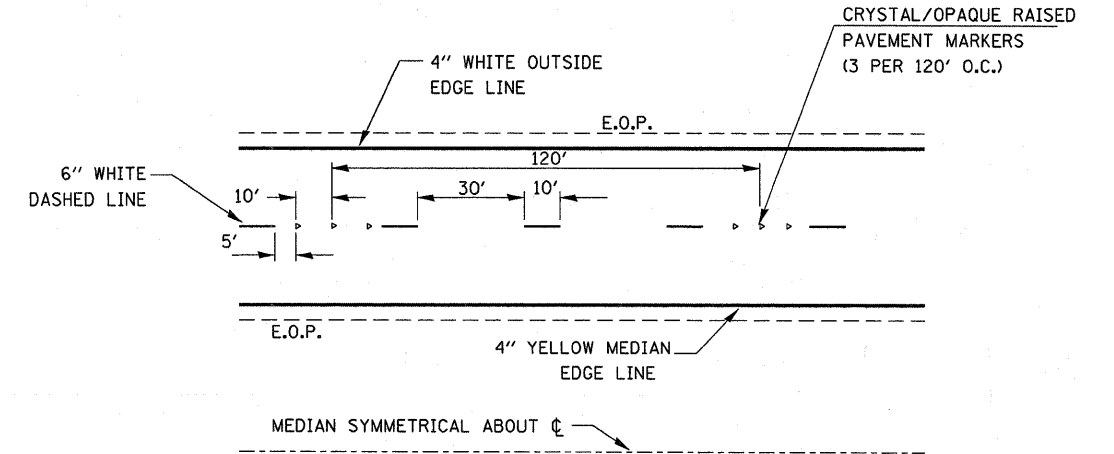
NOTES:

- EVERY 3rd INTERSECTION MUST BE TIED
- LAP NEW REINFORCEMENT WITH EXISTING LONGITUDINAL REINFORCEMENT
- VARIABLES: WHERE S_1 AND S_2 ARE $2\frac{1}{2}$ " MIN. AND 12" MAX. $D_1 = 2(S_1)$ AND $D_2 = 2(S_2)$

FILE NAME =	USER NAME = braboypc	DESIGNED - RON WOODSHANK	REVISED -	STATE OF ILLINOIS DEPARTMENT OF TRANSPORTATION	PATCHING DETAILS	F.A.I. RTE. 39	SECTION D3 PATCHING 2012-5	COUNTY LASALLE	TOTAL SHEETS 14	SHEET NO. 11	
cs:\pw_work\pwr\dot\braboypc\d0264562\0366840-sht-details.dgn	DRAWN - RON WOODSHANK	REVISED -	REVISED -			CONTRACT NO. 66B40					
PLOT SCALE = 50,0000' / IN.	CHECKED -	REVISED -	REVISED -			ILLINOIS					
PLOT DATE = Apr 02, 2011 - 04:37:24 PM	DATE -	REVISED -	REVISED -			SCALE: _____ SHEET NO. 2 OF 2 SHEETS STA. _____ TO STA. _____					



TYPICAL PAVEMENT MARKING FOR ENTRANCE RAMP TERMINALS

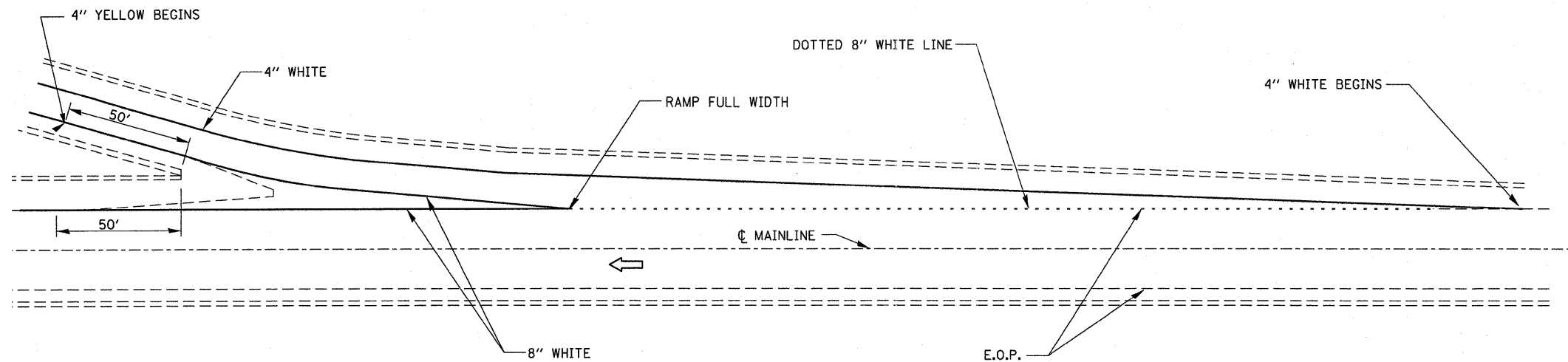


TYPICAL PAVEMENT MARKINGS

NOTE:

WHEN PATCHING IS ADJACENT TO 8" PAVEMENT MARKING LINE THE 8" STRIP SHALL BE REPLACED WITH TWO 4" LINES.

RAISED REFLECTIVE PAVEMENT MARKERS THAT FALL WITHIN PATCHED BOUNDARIES WILL NOT BE REPLACED.



TYPICAL PAVEMENT MARKINGS FOR EXIT RAMP TERMINALS

FILE NAME =	USER NAME = braboyce	DESIGNED - RON WOODSHANK	REVISED -
o:\pwork\pwsdot\braboyce\d0264562\036840-shr-details.dgn		DRAWN - RON WOODSHANK	REVISED -
	PLLOT SCALE = 50.0000' / IN.	CHECKED -	REVISED -
	PLLOT DATE = Apr 02, 2011 - 04:37:17 PM	DATE -	REVISED -

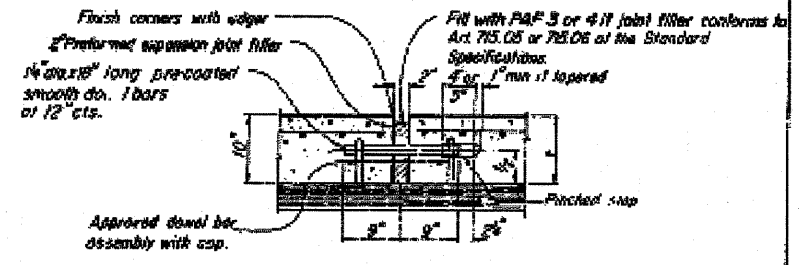
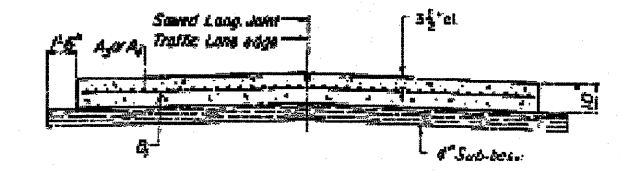
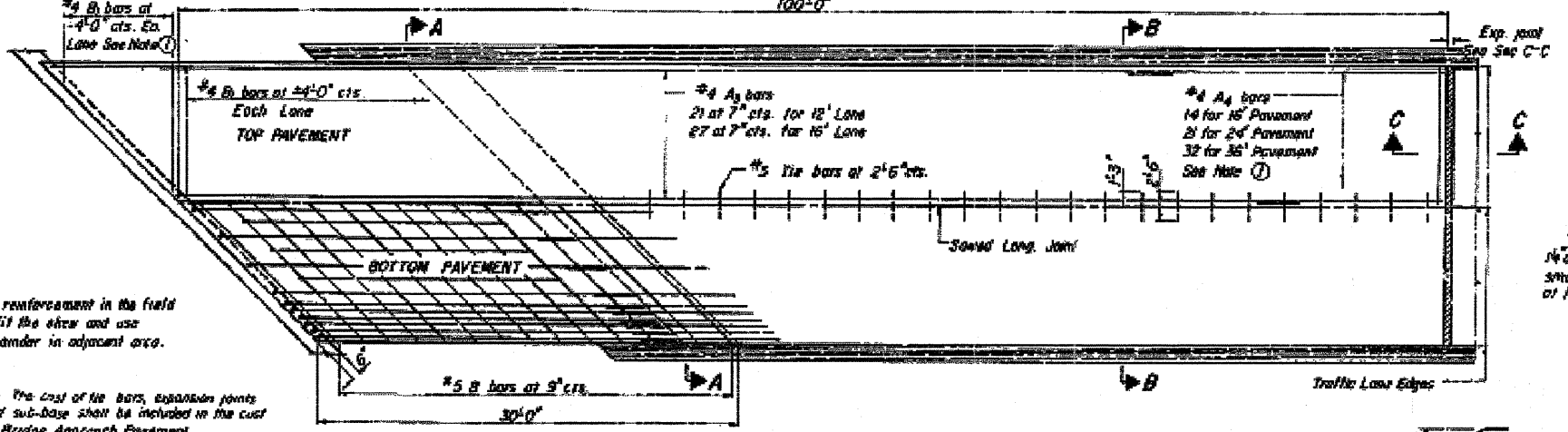
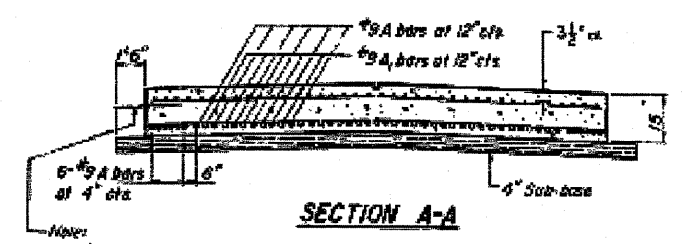
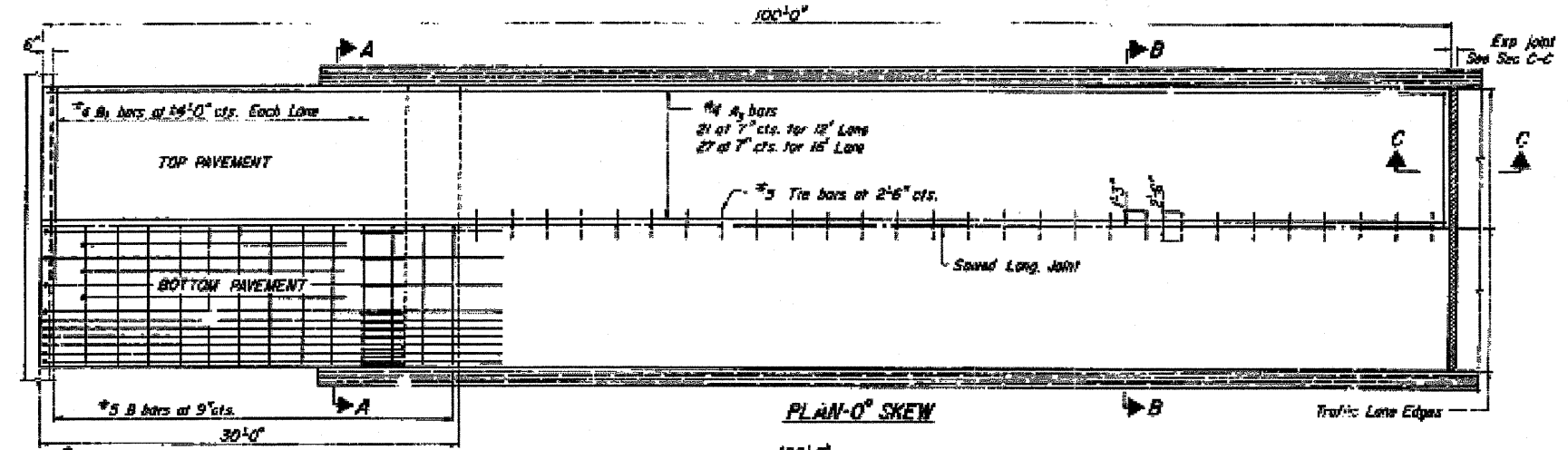
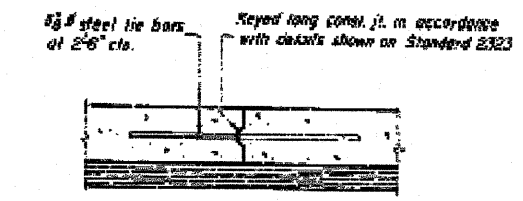
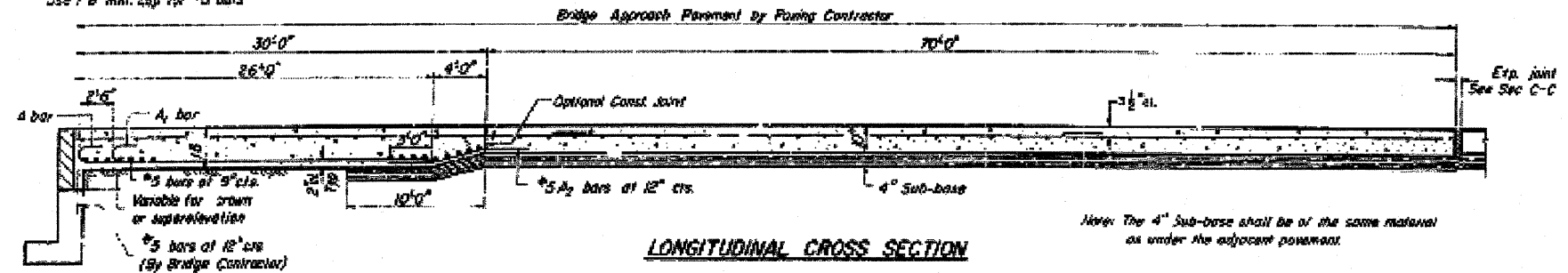
**STATE OF ILLINOIS
DEPARTMENT OF TRANSPORTATION**

PAVEMENT MARKING

SCALE: _____ SHEET NO. 1 OF 1 SHEETS STA. _____ TO STA. _____

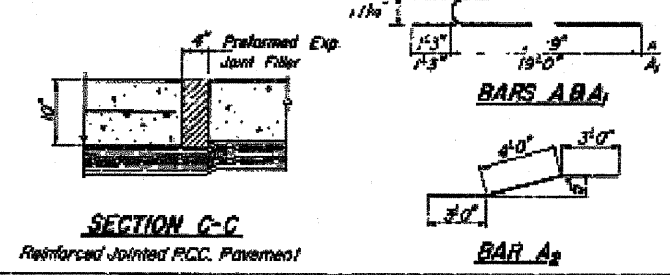
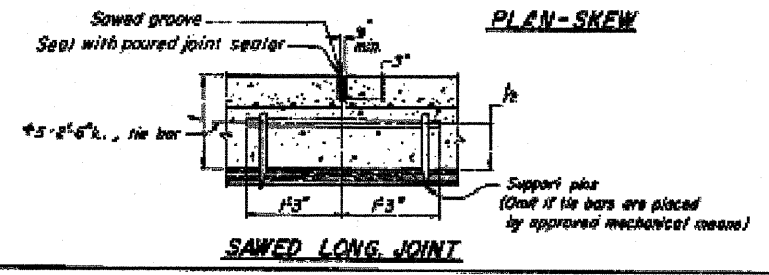
F.A.I. RTE.	SECTION	COUNTY	TOTAL SHEETS	SHEET NO.
39	D3 PATCHING 2012-5	LASALLE	14	12
CONTRACT NO. 66B40			ILLINOIS	

Use 1/2 inch of #3 bars for min. 3' grad. Use 1/4" Min. Lap for #4 bars.
Use 1/8" Min. Lap for #5 bars



1. Cut reinforcement in the field to fit the skew and use remainder in adjacent area.

Note: The cost of tie bars, expansion joints and sub-base shall be included in the cost of Bridge Approach Pavement



Illinois Department of Transportation

DESIGNED: Ron Woodshank
DRAWN: Ron Woodshank
CHECKED: [Signature]
DATE: [Date]

APPROVED: [Signature]
DATE: May 20, 1981

PROJECT: [Project Name]

BRIDGE APPROACH PAVEMENT

1 Sheet of 2
STANDARD 2353-5

FOR INFORMATION ONLY

FILE NAME =	USER NAME = brcbaycp	DESIGNED - RON WOODSHANK	REVISED -	STATE OF ILLINOIS DEPARTMENT OF TRANSPORTATION	EXISTING APPROACH PAVEMENT	F.A.I. RTE. 39	SECTION D3 PATCHING 2012-5	COUNTY LASALLE	TOTAL SHEETS 14	SHEET NO. 13	
CONTRACT NO. 66B40	SCALE: 1/8" = 1'-0"	DRAWN - RON WOODSHANK	REVISED -			STANDARD 2353-5	SHEET NO. 1 OF 2 SHEETS	STA. _____ TO STA. _____	ILLINOIS	CONTRACT NO. 66B40	
	PLOT SCALE = 50.0000' / IN.	CHECKED -	REVISED -								
	PLOT DATE = Apr 02, 2011 - 04:37:00 PM	DATE -	REVISED -								

QUANTITIES FOR 100-FOOT APPROACH SLAB

Skew Angle	Bottom Reinforcement			Top Reinforcement				Total Weight bars-lbs.
	No.	Length	Bar Size	No.	Length	No.	Length	

Skew Angle	Bottom Reinforcement			Top Reinforcement				Total Weight bars-lbs.
	No.	Length	Bar Size	No.	Length	No.	Length	

Skew Angle	Bottom Reinforcement			Top Reinforcement				Total Weight bars-lbs.
	No.	Length	Bar Size	No.	Length	No.	Length	

16-FOOT WIDTH PAVEMENT

Skew Angle	No.	Length	Bar Size	No.	Length	No.	Length	Total Weight bars-lbs.
0°	40	15'-6"	#5	81	34'-3"	—	—	5980
5°	40	15'-7"	#5	81	34'-0"	14	3'-11"	6010
10°	40	15'-9"	#5	81	33'-10"	14	5'-2"	6020
15°	40	16'-1"	#5	81	33'-7"	14	8'-5"	6030
20°	40	16'-6"	#5	81	33'-5"	14	7'-9"	6050
25°	40	17'-1"	#5	81	33'-2"	14	9'-2"	6070
30°	40	17'-11"	#5	81	32'-11"	14	10'-9"	6110
35°	40	18'-11"	#5	81	32'-7"	14	12'-8"	6130
40°	40	20'-3"	#5	81	32'-5"	14	14'-5"	6200
45°	40	21'-11"	#5	81	31'-11"	14	16'-8"	6280
50°	40	24'-7"	#5	81	31'-3"	14	19'-4"	6370
55°	40	27'-0"	#5	81	30'-11"	14	22'-8"	6490
60°	40	31'-0"	#5	81	30'-2"	14	26'-11"	6660

24-FOOT WIDTH PAVEMENT

Skew Angle	No.	Length	Bar Size	No.	Length	No.	Length	Total Weight bars-lbs.
0°	40	25'-6"	#5	126	34'-3"	—	—	8840
5°	40	25'-7"	#5	126	33'-10"	21	4'-9"	8880
10°	40	25'-10"	#5	126	33'-8"	21	6'-11"	8890
15°	40	26'-4"	#5	126	33'-2"	21	9'-1"	8910
20°	40	26'-9"	#5	126	32'-9"	21	11'-5"	8940
25°	40	26'-11"	#5	126	32'-4"	21	13'-10"	8980
30°	40	27'-2"	#5	126	31'-11"	21	16'-6"	9030
35°	40	28'-8"	#5	126	31'-5"	21	19'-8"	9090
40°	40	30'-8"	#5	126	30'-10"	21	22'-10"	9170
45°	40	33'-3"	#5	126	30'-3"	21	26'-8"	9290
50°	40	37'-1"	#5	126	29'-5"	21	31'-3"	9490
55°	40	41'-4"	#5	126	28'-5"	21	36'-11"	9680
60°	40	46'-4"	#5	126	27'-5"	42	22'-9"	9940

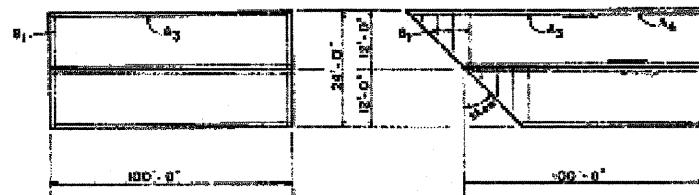
36-FOOT WIDTH PAVEMENT

Skew Angle	No.	Length	Bar Size	No.	Length	No.	Length	Total Weight bars-lbs.
0°	40	35'-6"	#5	189	34'-3"	—	—	13040
5°	40	35'-8"	#5	189	33'-8"	32	5'-10"	13090
10°	40	36'-0"	#5	189	33'-2"	32	9'-0"	13110
15°	40	36'-4"	#5	189	32'-8"	32	12'-4"	13250
20°	40	36'-10"	#5	189	32'-0"	32	15'-9"	13260
25°	40	36'-7"	#5	189	31'-5"	32	19'-6"	13330
30°	40	37'-6"	#5	189	30'-9"	32	23'-8"	13410
35°	40	38'-8"	#5	189	30'-0"	32	27'-10"	13510
40°	40	40'-8"	#5	189	29'-2"	32	32'-10"	13630
45°	40	43'-2"	#5	189	28'-3"	64	20'-0"	13840
50°	40	46'-8"	#5	189	27'-1"	64	23'-8"	14050
55°	40	50'-0"	#5	189	25'-8"	64	27'-9"	14330
60°	40	54'-7"	#5	189	23'-10"	64	31'-2"	14710

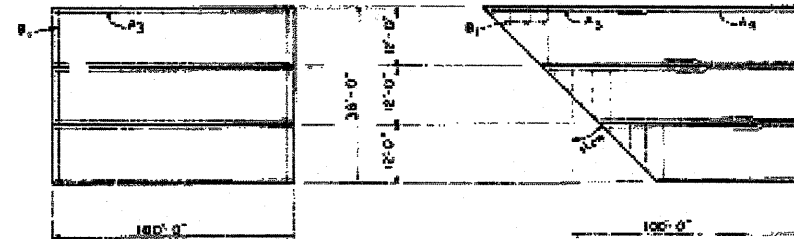
TOP OF SLAB BAR ARRANGEMENT



TOP OF SLAB BAR ARRANGEMENT



TOP OF SLAB BAR ARRANGEMENT



Illinois Department of Transportation
 PASSED BY: [Signature] DATE: 02/10/11
 APPROVED BY: [Signature] DATE: 02/10/11
 PROJECT: [Signature] DATE: 02/10/11

BRIDGE APPROACH PAVEMENT
 1 Sheet 2 of 2
 STANDARD 2353-5
 Full Size OAKS

FOR INFORMATION ONLY

FILE NAME =	USER NAME = braboyco	DESIGNED - RON WOODSHANK	REVISED -	STATE OF ILLINOIS DEPARTMENT OF TRANSPORTATION	EXISTING APPROACH PAVEMENT	F.A.I. RTE. 39	SECTION D3 PATCHING 2012-5	COUNTY LASALLE	TOTAL SHEETS 14	SHEET NO. 14
CONTRACT NO. 66B40	SCALE: _____	SHEET NO. 2 OF 2 SHEETS	STA. _____ TO STA. _____			ILLINOIS				
CONTRACT NO. 66B40	SCALE: _____	SHEET NO. 2 OF 2 SHEETS	STA. _____ TO STA. _____			ILLINOIS				
CONTRACT NO. 66B40	SCALE: _____	SHEET NO. 2 OF 2 SHEETS	STA. _____ TO STA. _____			ILLINOIS				