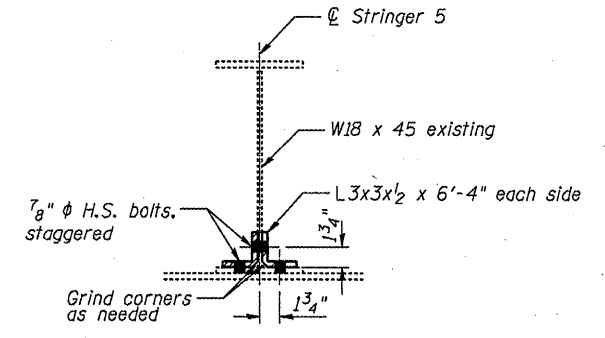
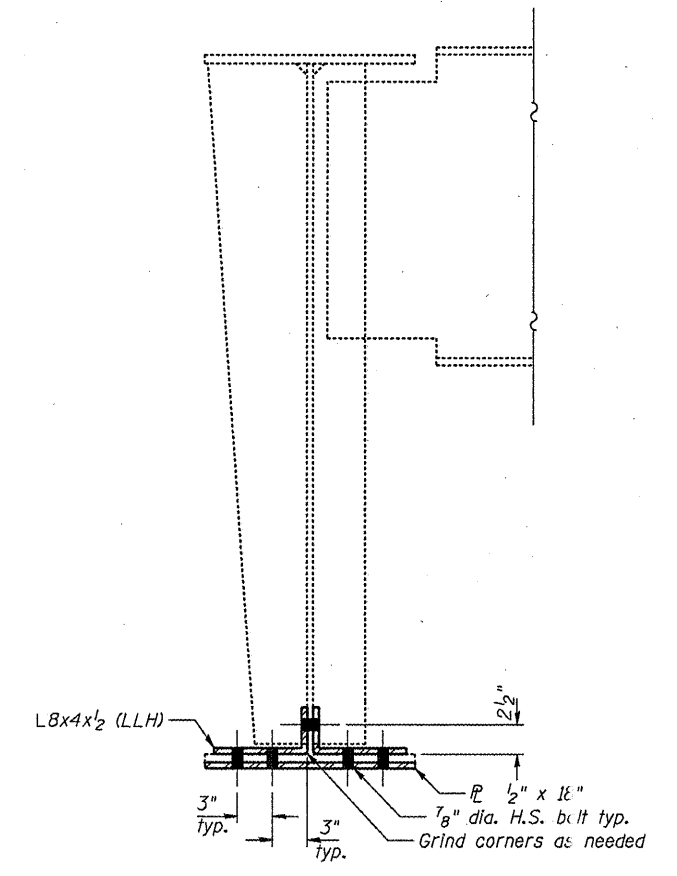


**DETAIL 6**

Str. 5 over FB. 1, Span 14-15 (S.N. 090-0108)  
 Str. 5 over FB. 1, Span 5-6 (S.N. 090-0109)

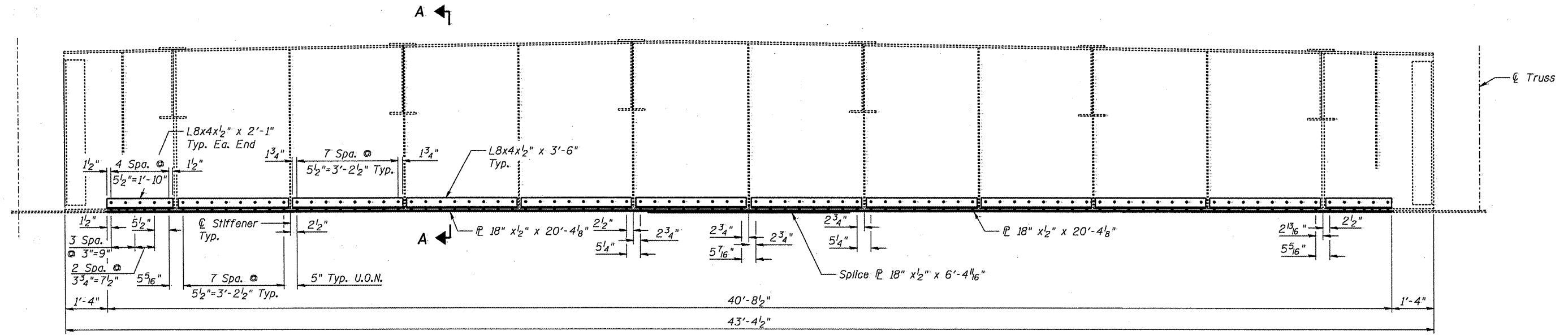


**SECTION B-B**



**SECTION A-A**

**Note:**  
 Gaps between the existing steel and the new steel angles and/or cover plates shall be sealed with an approved polyurethane sealant. The sealant shall be compatible with the proposed paint system and shall be submitted to the Engineer for approval prior to use. All costs associated with the installation of the sealant shall be included with the cost for STRUCTURAL STEEL REPAIR.



**DETAIL 7**  
**SPAN 9 FB. 0**

(Looking East)  
 (S.N. 090-0108)

FILE NAME =	USER NAME =	DESIGNED - JAN	REVISED -
		CHECKED - BTO	REVISED -
PLOT SCALE =		DRAWN - RAB	REVISED -
PLOT DATE =		CHECKED - JAN	REVISED -

**STATE OF ILLINOIS**  
**DEPARTMENT OF TRANSPORTATION**

**STRUCTURAL STEEL REPAIR DETAILS, SHEET 3**  
**STRUCTURE NO: 090-0108 & 090-0109**  
 SHEET NO. 54 OF 65 SHEETS

F.A.I. RTE.	SECTION	COUNT	TOTAL SHEETS	SHEET NO.
474		PEORIA & TAZEWELL	129	88
			CONTRACT NO. 68069	
ILLINOIS FED. AID PROJECT				