

GENERAL NOTES

Two Type A Low Intensity Flashing Lights shall be used on each approach in advance of the work area during hours of darkness. One light shall be installed above the barricades and the other above the first advance warning sign.

When fluorescent signs are used, orange flags are not required.

All signs shall be post mounted if the closure time exceeds four days.

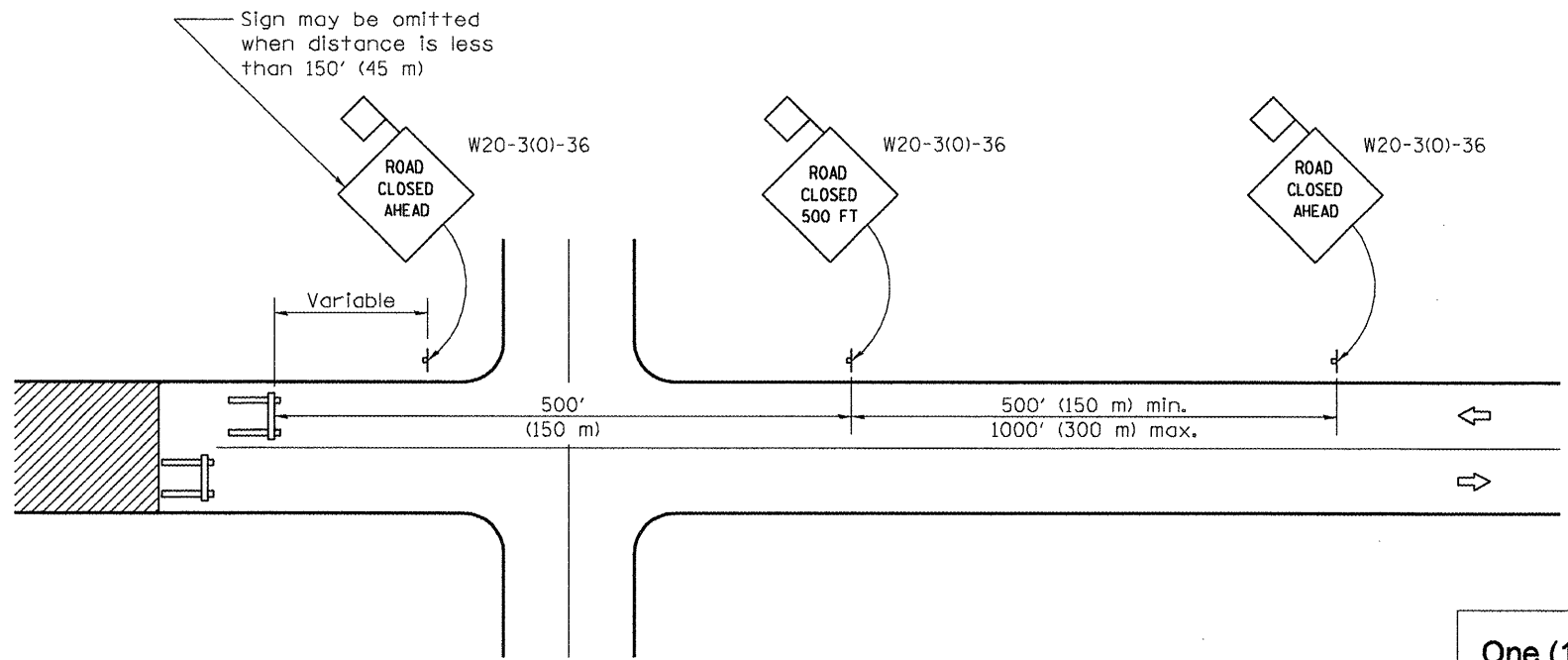
Longitudinal dimensions may be adjusted to fit field conditions.

All warning signs shall have minimum dimensions of 36 x 36 (900 x 900) and have a black legend on an orange reflectorized background.

When the distance between the barricade and the intersection is between 1500' (450 m) and 2000' (600 m), the advance sign shall be placed at the intersection. When the distance between the barricade and the intersection is over 2000' (600 m), an additional sign shall be placed at the intersection. The additional sign shall give the distance to the barricade in miles or fractions of a mile.

All work zone signs are required to meet, as a minimum, Type B reflectivity requirements of Table 1091-2 in Article 1091.02 of the Standard Specifications.

All dimensions are in inches (millimeters) unless otherwise shown.



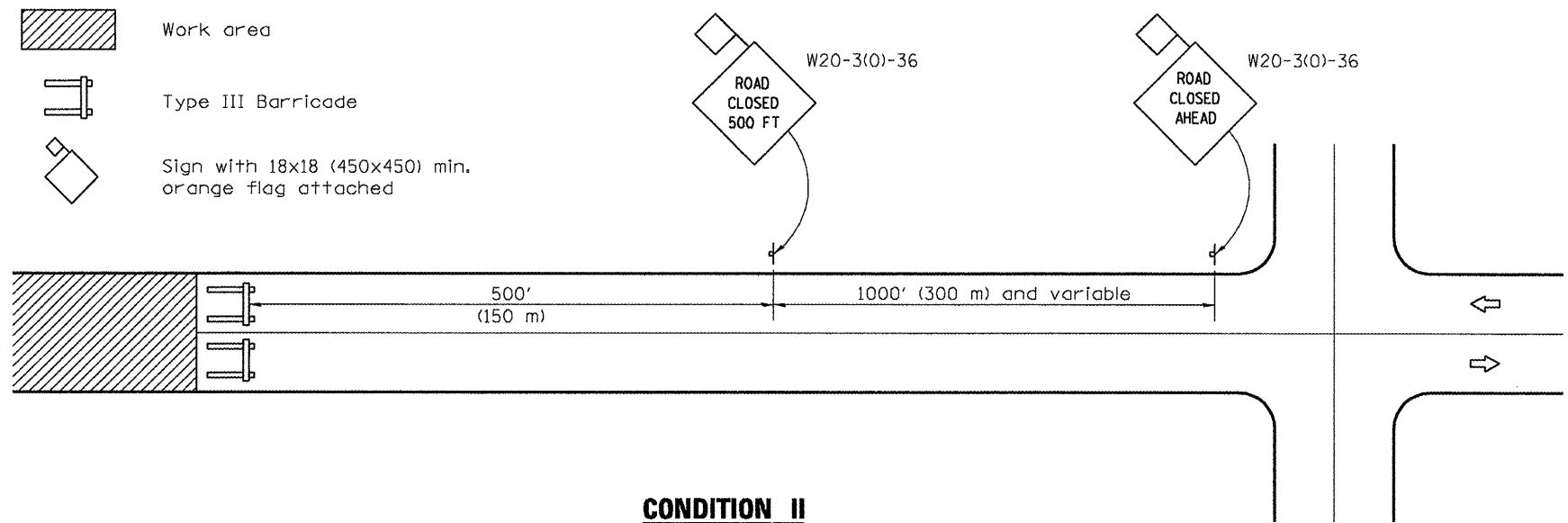
CONDITION I

When distance from closure to crossroad is less than 1500' (450 m)

One (1) message board shall be placed on Hart Lane for one (1) week prior to the closure of Hart Lane to inform motorists of the start date of the closure. This will not be paid for separately, but shall be included in the price of TRAFFIC CONTROL SPECIAL, STANDARD BLR 21 (SPECIAL)

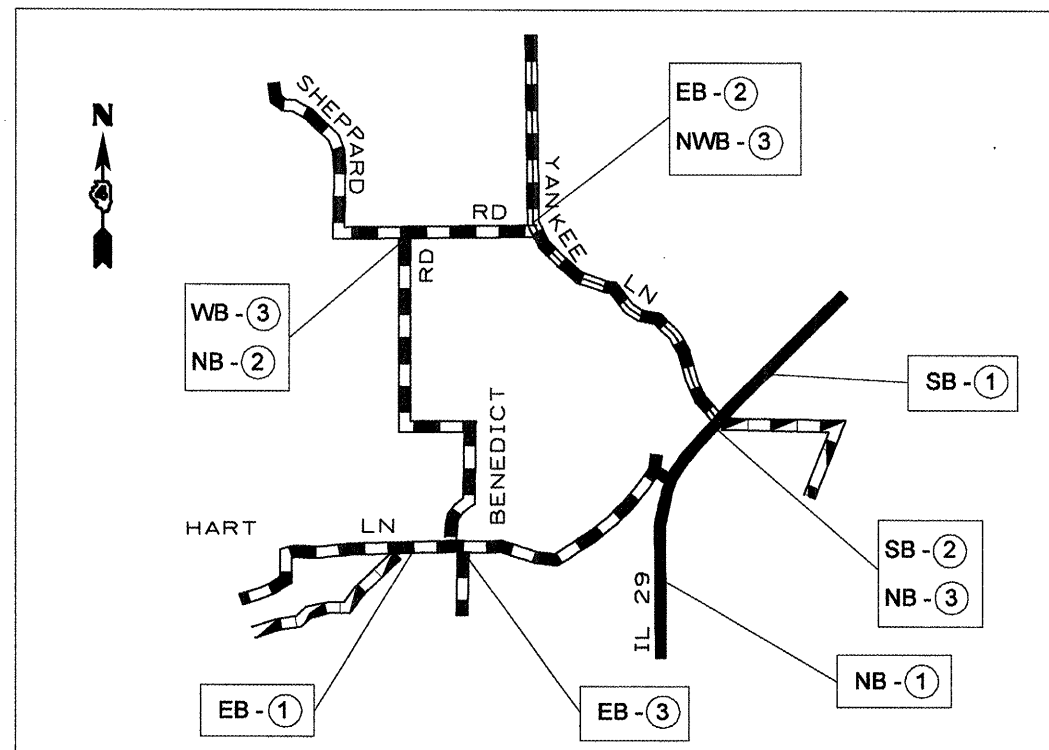
SYMBOLS

- Work area
- Type III Barricade
- Sign with 18x18 (450x450) min. orange flag attached



CONDITION II

When distance from closure to crossroad is greater than 1500' (450 m)



MARKED DETOUR SIGNING LEGEND

- ① R11-3-6030 "HART LANE CLOSED AT IL 29 1 MILE AHEAD" M4-8-2412 "DETOUR"
- ② M4-8-2412 "DETOUR" M1-5-2424 "HART LANE" M6-1-2115 (RIGHT ARROW)
- ③ M4-8-2412 "DETOUR" M1-5-2424 "HART LANE" M6-1-2115 (LEFT ARROW)

Hart Lane and Benedict Road Condition I
Type III Barricades and R11-4-6030 signs shall be positioned as shown in the "Road Closed To Thru Traffic" detail on Highway Standard 701901

Hart Lane and IL 29 Condition II
Type III Barricades and R11-2-4830 signs shall be positioned as shown in the "Road Closed To All Traffic" detail on Highway Standard 701901

FILE NAME = D:\68993-sht-details.dgn	USER NAME = hudelsonm	DESIGNED -	REVISED -	STATE OF ILLINOIS DEPARTMENT OF TRANSPORTATION	TRAFFIC CONTROL & PROTECTION BLR 21 (SPL)	F.A.P. RTE. 318	SECTION 4W-2, RS-3	COUNTY PEORIA	TOTAL SHEETS 37	SHEET NO. 16	
		DRAWN -	REVISED -			SCALE: SHEET NO. OF SHEETS STA. TO STA.					
		CHECKED -	REVISED -			CONTRACT NO. 68993					
		DATE -	REVISED -			ILLINOIS FED. AID PROJECT					