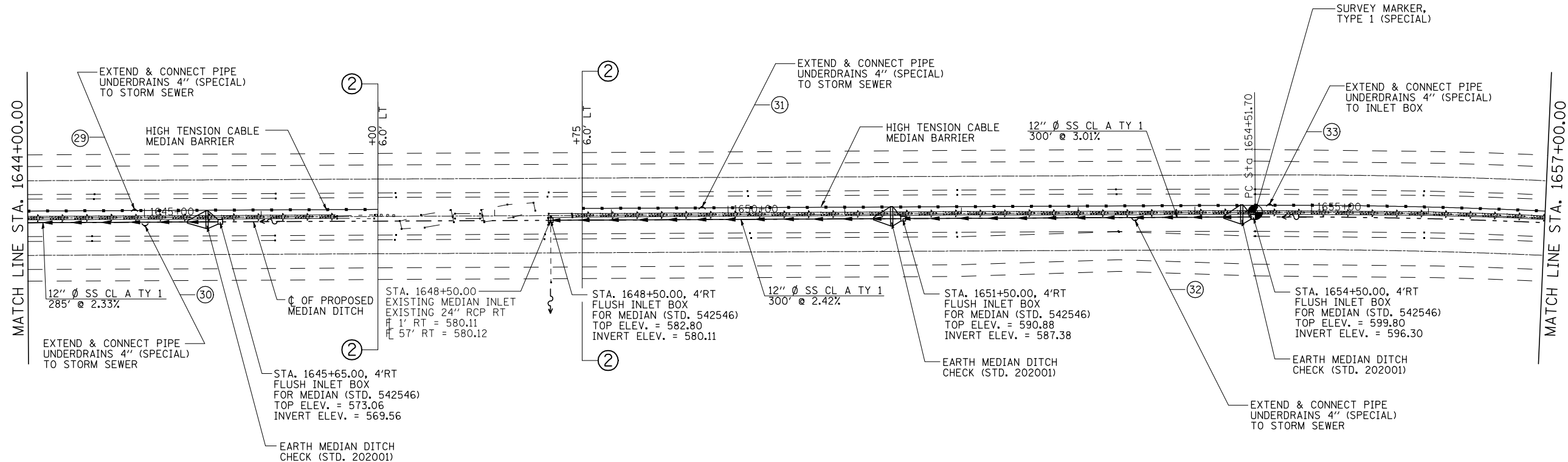


PLAN	SURVEYED	BY	DATE
	PLOTTED		
	CHECKED		
	DATE		
	NO.		

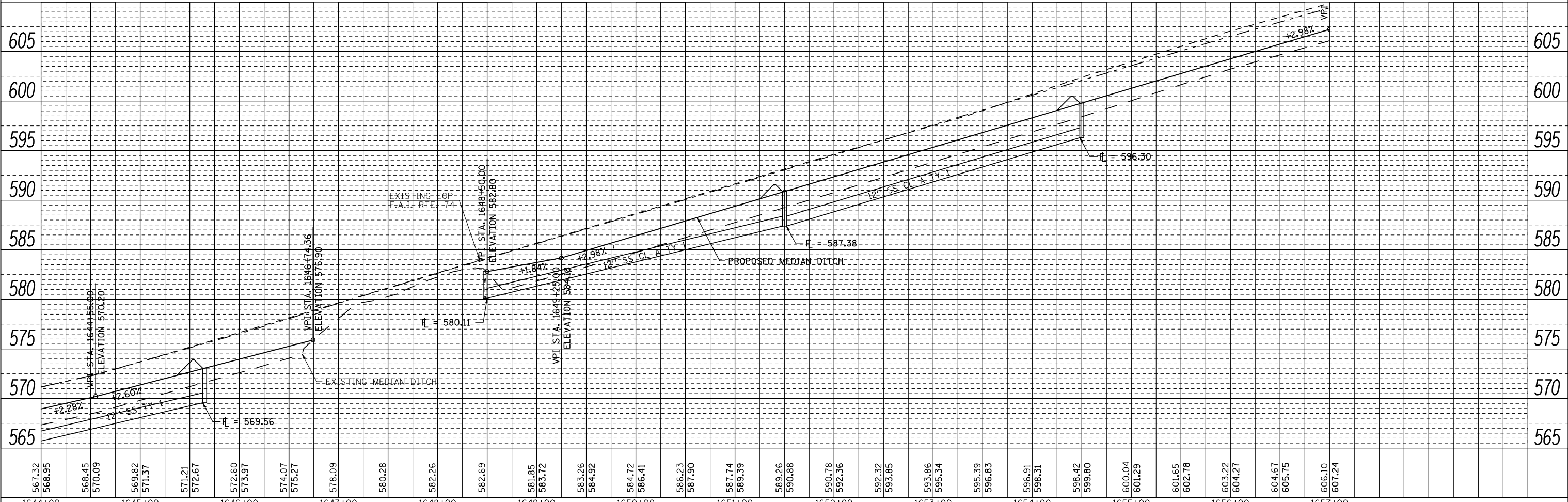


BM: (TRAVERSE STATION 451)  
9.08' RT STA 1644+87.58  
ELEV. 572.22

MEDIAN INLET BOX REMOVAL - 1 EACH  
STA 1648+50.00

BM: (TRAVERSE STATION 452)  
11.03' RT STA 1649+80.09  
ELEV. 587.08

PROFILE	SURVEYED	BY	DATE
	GRADES CHECKED		
	STRUCTURE NOTATIONS CHECKED		
	NO.		



FILE NAME =	USER NAME = *USER*	DESIGNED -	REVISED -	<b>STATE OF ILLINOIS DEPARTMENT OF TRANSPORTATION</b>	<b>PLAN &amp; PROFILE F.A.I. 74</b>		F.A.I. RTE. =	SECTION	COUNTY	TOTAL SHEETS	SHEET NO.
*FILEL*		DRAWN -	REVISED -		74	HSIP FY2011-4	VERMILION	88	15		
		CHECKED -	REVISED -		SCALE: SHEET NO. 6 OF 13 SHEETS STA. 1644+00.00 TO STA. 1657+00.00		CONTRACT NO. 70910		ILLINOIS FED. AID PROJECT		
		DATE -	REVISED -								