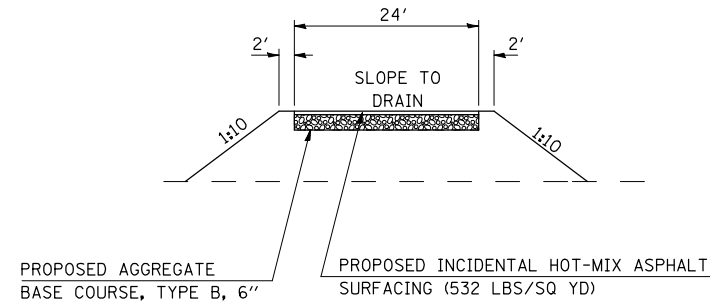
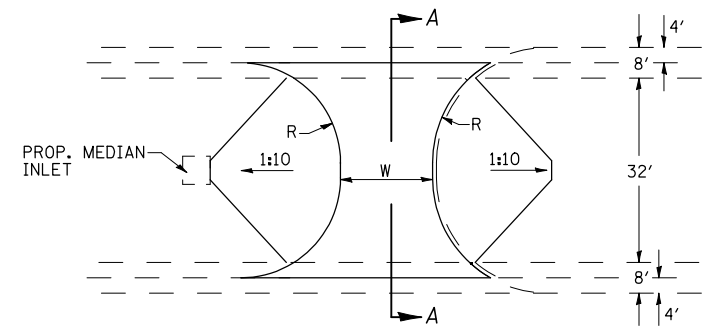


DETAIL OF MEDIAN CROSSOVER TO BE RECONSTRUCTED

STA. 1639+50.00
STA. 1734+75.00

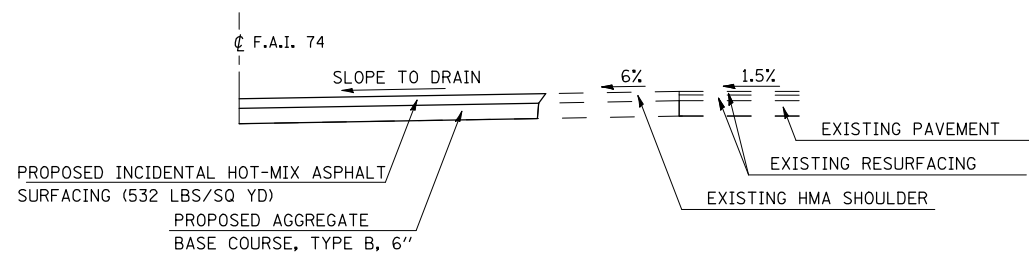


ELEVATION



PLAN

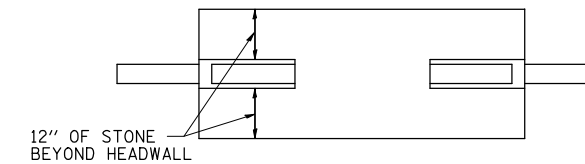
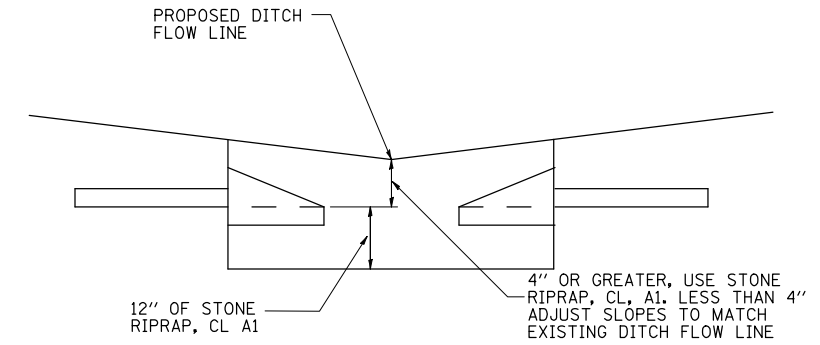
STA.	R	W
1639+50	20'	24'
1734+75	30'	20'



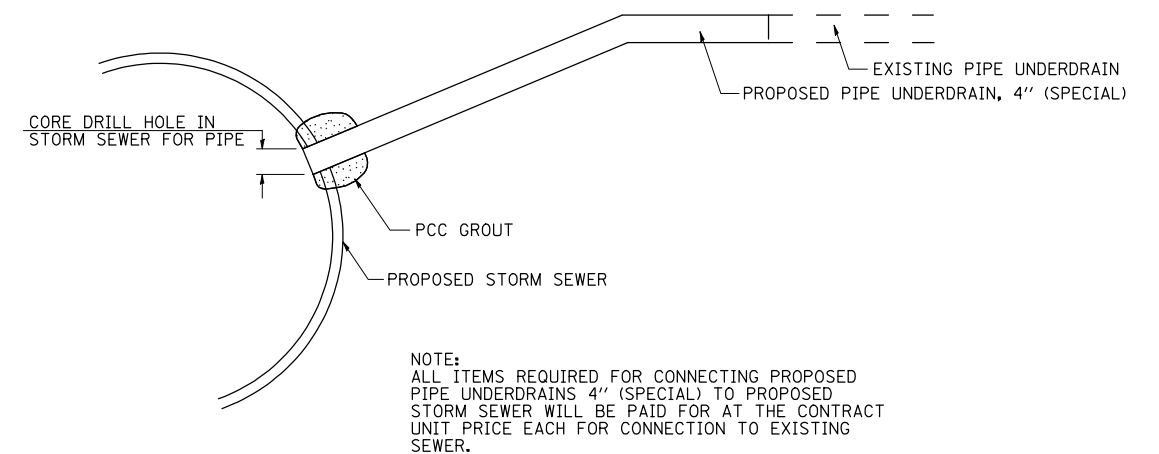
SECTION A-A
SYMMETRICAL ABOUT CENTERLINE

NOTES

1. THE COST OF REMOVAL OF EXISTING SURFACING IS INCLUDED IN THE COST OF PIPE CULVERT REMOVAL. REMOVAL OF SURFACING SHALL MEET THE REQUIREMENTS OF ARTICLE 440 OF THE STANDARD SPECIFICATIONS.



UNDERDRAIN OUTLET
BELOW DITCH GRADE
TYPICAL DETAIL



NOTE:
ALL ITEMS REQUIRED FOR CONNECTING PROPOSED PIPE UNDERDRAINS 4" (SPECIAL) TO PROPOSED STORM SEWER WILL BE PAID FOR AT THE CONTRACT UNIT PRICE EACH FOR CONNECTION TO EXISTING SEWER.

DETAIL OF CONNECTING PIPE UNDERDRAINS
4" (SPECIAL) TO PROPOSED STORM SEWER