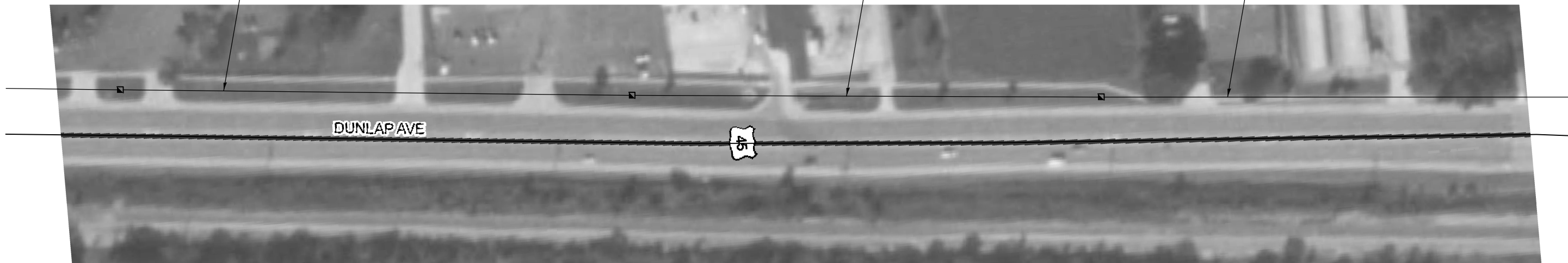




590' PVC - 2" - P  
1 FO 62.5/125 12SM 12MM  
1 NO. 12 1C, XLP

575' PVC - 2" - P  
1 FO 62.5/125 12SM 12MM  
1 NO. 12 1C, XLP

590' PVC - 2" - P  
1 FO 62.5/125 12SM 12MM  
1 NO. 12 1C, XLP



DUNLAP AVE



128' PVC - 2" - P  
1 FO 62.5/125 12SM 12MM  
1 NO. 12 1C, XLP  
DRILL EXIST. HH- 1 EA.

CURTIS RD.

8' EXIST. GS - 6"  
PULL: 1 NO. 18, 3 PR. COMM.  
ADD: 2 FO 62.5/125 12SM 12MM

EXIST. TYPE 4 CABINET  
TRANSCIVER - FO - 1 EACH

36' EXIST. GS - 1 1/2"  
PULL: 1 NO. 18, 3 PR. COMM.  
ADD: 1 FO 62.5/125 12SM 12MM  
1 NO. 12 1C, XLP

176' EXIST. GS - 1 1/2"  
PULL: 1 NO. 18, 3 PR. COMM.  
ADD: 1 FO 62.5/125 12SM 12MM  
1 NO. 12 1C, XLP

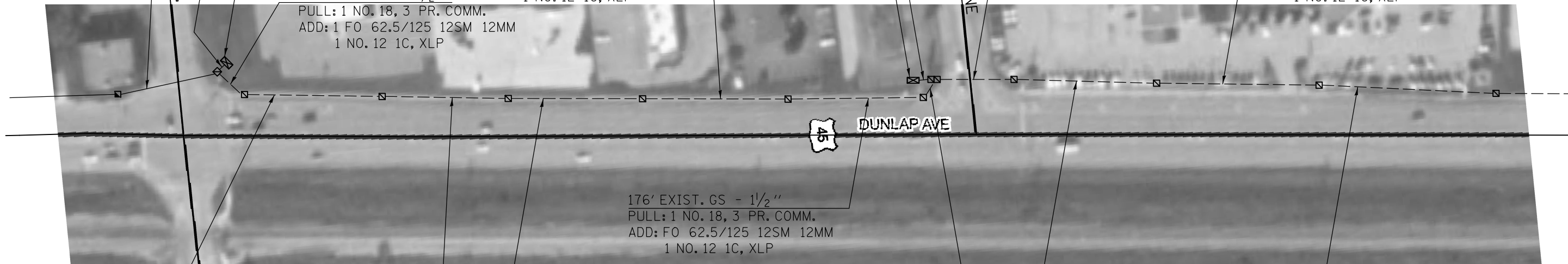
EXIST. TY. 4 CAB.  
TRANSCIVER-FO- 1 EA.

10' EXIST. PVC - 3 1/2"  
PULL: 2 NO. 18, 3 PR. COMM.  
ADD: 2 FO 62.5/125 12SM 12MM

ARBOR TOWNE  
ALLEY

106' EXIST. PVC - 3"  
PULL: 1 NO. 18, 3 PR. COMM.  
ADD: 1 FO 62.5/125 12SM 12MM  
1 NO. 12 1C, XLP

145' EXIST. PVC - 2"  
PULL: 1 NO. 18, 3 PR. COMM.  
ADD: 1 FO 62.5/125 12SM 12MM  
1 NO. 12 1C, XLP



DUNLAP AVE



176' EXIST. GS - 1 1/2"  
PULL: 1 NO. 18, 3 PR. COMM.  
ADD: FO 62.5/125 12SM 12MM  
1 NO. 12 1C, XLP

169' EXIST. GS - 1 1/2"  
PULL: 1 NO. 18, 3 PR. COMM.  
ADD: 1 FO 62.5/125 12SM 12MM  
1 NO. 12 1C, XLP

145' EXIST. GS - 1 1/2"  
PULL: 1 NO. 18, 3 PR. COMM.  
ADD: 1 FO 62.5/125 12SM 12MM  
1 NO. 12 1C, XLP

176' EXIST. GS - 1 1/2"  
PULL: 1 NO. 18, 3 PR. COMM.  
ADD: 1 FO 62.5/125 12SM 12MM  
1 NO. 12 1C, XLP

32' EXIST. PVC - 2 1/2"  
PULL: 1 NO. 18, 3 PR. COMM.  
ADD: 1 FO 62.5/125 12SM 12MM  
1 NO. 12 1C, XLP

164' EXIST. PVC - 2"  
PULL: 1 NO. 18, 3 PR. COMM.  
ADD: 1 FO 62.5/125 12SM 12MM  
1 NO. 12 1C, XLP

219' EXIST. PVC - 2"  
PULL: 1 NO. 18, 3 PR. COMM.  
ADD: 1 FO 62.5/125 12SM 12MM  
1 NO. 12 1C, XLP

FILE NAME =	USER NAME = biggsrd	DESIGNED -	REVISED -
et:\pw\work\p\dot\biggsrd\d0261371\0570911-sht-US45_Plen.dgn		DRAWN -	REVISED -
		CHECKED -	REVISED -
		DATE -	REVISED -

STATE OF ILLINOIS  
DEPARTMENT OF TRANSPORTATION

US 45 (NEIL ST.)

SCALE: SHEET NO. OF SHEETS STA. TO STA.

F.A. RTE.	SECTION	COUNTY	TOTAL SHEETS	SHEET NO.
VAR.	FY2011 INTERCONNECT	Champaign	34	28
			CONTRACT NO. 70911	

ILLINOIS FED. AID PROJECT