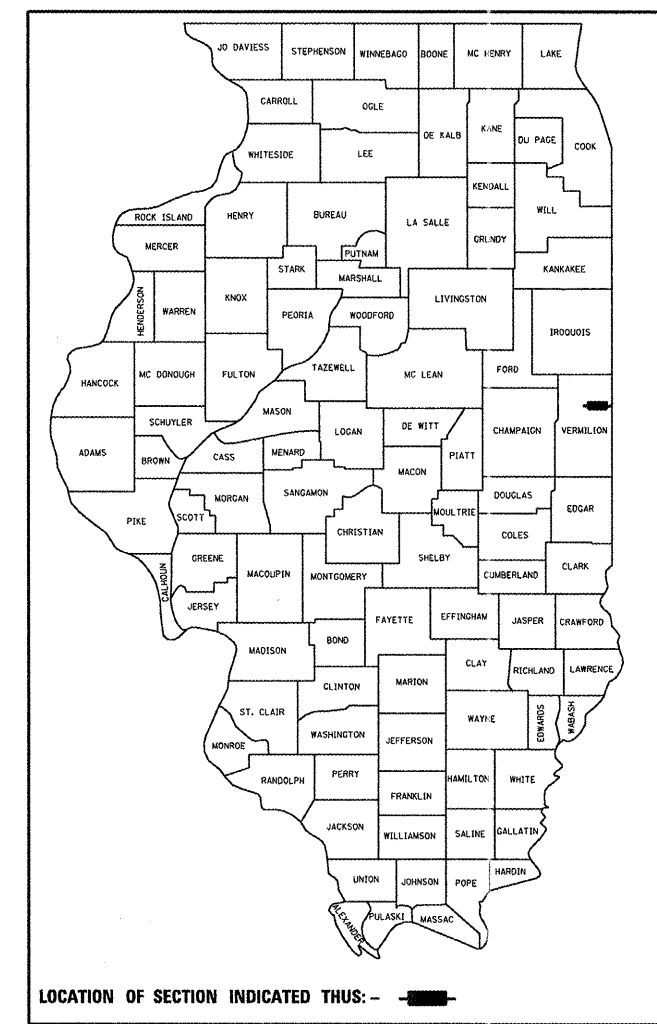


F.A.P. RTE.	SECTION	COUNTY	TOTAL SHEETS	SHEET NO.
711		VERMILION	10	1
		ILLINOIS	CONTRACT NO. 70920	

*POSTING MITIGATION FY2011-3

D-95-017-11



LOCATION OF SECTION INDICATED THUS: - [black rectangle] -

STATE OF ILLINOIS
DEPARTMENT OF TRANSPORTATION
DIVISION OF HIGHWAYS

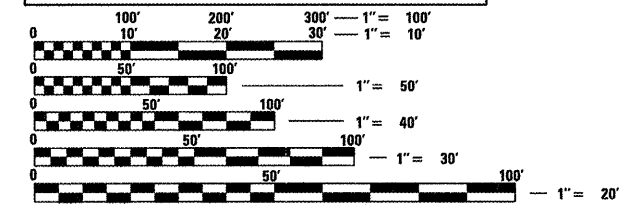
**PROPOSED
HIGHWAY PLANS**

F.A.P. ROUTE 711 (IL 119)
SECTION: POSTING MITIGATION FY2011-3
PROJECT F-0711(013)
VERMILION COUNTY
PPC DECK BEAM BRACING ON S.N. 092-0065
OVER NORTH FORK VERMILION RIVER
2.0 MILES EAST OF IL 1
C-95-017-11

FOR INDEX OF SHEETS, SEE SHEET NO. 2
FOR SUMMARY OF QUANTITIES, SEE SHEET NO. 3

CURRENT ADT / DESIGN ADT
CURRENT ADT: 1,900 (2009)

DESIGN DESIGNATION
N/A
SOUTH ROSS TOWNSHIP

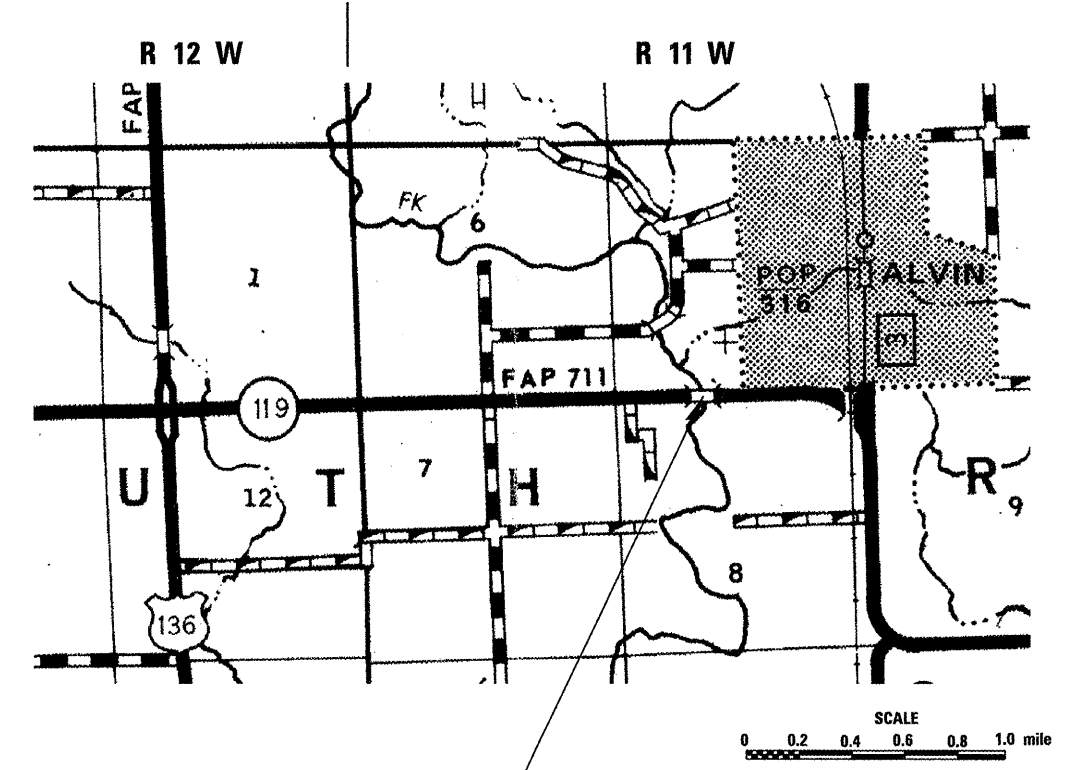


FULL SIZE PLANS HAVE BEEN PREPARED USING STANDARD ENGINEERING SCALES. REDUCED SIZED PLANS WILL NOT CONFORM TO STANDARD SCALES. IN MAKING MEASUREMENTS ON REDUCED PLANS, THE ABOVE SCALES MAY BE USED.

J.U.L.I.E.
JOINT UTILITY LOCATION INFORMATION FOR EXCAVATION
1-800-892-0123
OR 811

PROJECT ENGINEER: TIM BRANDENBURG
TELEPHONE: 217-465-4181

CONTRACT NO. 70920



SECTION POSTING MITIGATION FY2011-3

S.N. 092-0065
STA. 730 + 96.00

GROSS LENGTH = 215.00 FT. = 0.041 MILE
NET LENGTH = 215.00 FT. = 0.041 MILE

STATE OF ILLINOIS
DEPARTMENT OF TRANSPORTATION
DIVISION OF HIGHWAYS

SUBMITTED 3/2 20 11
Joseph K. Conner
DEPUTY DIRECTOR OF HIGHWAYS, REGION 3 ENGINEER

May 13 20 11
Scott E. Stitt, P.E.
Acting ENGINEER OF DESIGN AND ENVIRONMENT

May 13 20 11
Christine M. Ressler
DIRECTOR OF HIGHWAYS, CHIEF ENGINEER

**PRINTED BY THE AUTHORITY
OF THE STATE OF ILLINOIS**

INDEX OF SHEETS

SHEET NO.	DESCRIPTION
1	COVER SHEET
2	INDEX OF SHEETS & LIST OF STANDARDS
2	GENERAL NOTES
3	SUMMARY OF QUANTITIES
4-5	STRUCTURE PLANS

LIST OF STANDARDS

STANDARD NO.	DESCRIPTION
000001-06	STANDARD SYMBOLS, ABBREVIATIONS AND PATTERNS
001006	DECIMAL OF AN INCH AND OF A FOOT
701001-02	OFF-ROAD OPERATIONS, 2L, 2W, MORE THAN 15' (4.5M) AWAY
701006-03	OFF-ROAD OPERATIONS, 2L, 2W, 15' (4.5M) TO 24" (600MM) FROM PAVEMENT EDGE
701201-04	LANE CLOSURE, 2L, 2W, DAY ONLY, FOR SPEEDS >= 45 MPH
701901-01	TRAFFIC CONTROL DEVICES

GENERAL NOTES

G.N.-100
 ENGLISH UNITS OF MEASUREMENT SHALL GOVERN OVER AND SUPERSEDE ANY METRIC UNITS SHOWN
 IN THIS CONTRACT. WHERE INCLUDED, METRIC UNITS ARE FOR INFORMATION ONLY.

CONTRACTOR ACCESS

THE CONTRACTOR SHALL BE RESPONSIBLE FOR DETERMINING AND RESTORING
 ACCESS TO S.N. 092-0065 AT NO ADDITIONAL COMPENSATION TO THE DEPARTMENT.
 SUGGESTED ACCESS THROUGH THE SOUTHWEST QUADRANT

NO COMMITMENTS

•POSTING MITIGATION FY2011-3

FILE NAME =	USER NAME = cearloak.jd	DESIGNED -	REVISED -	STATE OF ILLINOIS DEPARTMENT OF TRANSPORTATION	INDEX OF SHEETS, LIST OF STANDARDS & GENERAL NOTES	F.A.P. RTE.	SECTION	COUNTY	TOTAL SHEETS	SHEET NO.
c:\pwwork\pwwork\cearloak.jd\0254134\0254134.dwg	70920-shr:gennote.dgn	DRAWN -	REVISED -			711	•	VERMILION	10	2
	PLOT SCALE = 40,0000' / IN.	CHECKED -	REVISED -		SCALE: NONE	SHEET NO. 2 OF 10 SHEETS	STA.	TO STA.	ILLINOIS FED. AID PROJECT	
	PLOT DATE = 2/28/2011	DATE -	REVISED -						CONTRACT NO. 70920	

SUMMARY OF QUANTITIES

LOCATION OF WORK: VERMILION COUNTY
 F.A.P. 711 (IL 119)
 RURAL 2-LANE
 S.N. 092-0065
 MINOR STRUCTURE REPAIR
 FUNDING: 80% FED. 20% STATE
 CONSTRUCTION TYPE CODE: 0014

CODE NO.	DESCRIPTION	UNIT	TOTAL QUANTITY
50500405	FURNISHING AND ERECTING STRUCTURAL STEEL	POUND	15,670.0
67100100	MOBILIZATION	L SUM	1.0
70100450	TRAFFIC CONTROL AND PROTECTION, STANDARD 701201	L SUM	1.0

*POSTING MITIGATION FY2011-3

FILE NAME #	USER NAME # cearlockjd	DESIGNED -	REVISED -	STATE OF ILLINOIS DEPARTMENT OF TRANSPORTATION	SUMMARY OF QUANTITIES	F.A.P. RTE.	SECTION	COUNTY	TOTAL SHEETS	SHEET NO.
et\pwork\pwork\cearlockjd\0254134\0254134.dgn	70920-sht-500.dgn	DRAWN -	REVISED -			711	*	VERMILION	10	3
	PLOT SCALE # 40,0000 "/ IN.	CHECKED -	REVISED -		SCALE: NONE	SHEET NO. 3 OF 10 SHEETS		STA.	TO STA.	
	PLOT DATE # 2/28/2011	DATE -	REVISED -		ILLINOIS FED. AID PROJECT					
								CONTRACT NO. 70920		

* Contractor is to verify beam length prior to ordering material. Other sections meeting the section modulus requirements shown may be allowed subject to approval by the Bureau of Bridges and Structures. Maximum Girder depth = 27". No additional payment will be allowed if the contractor chooses a heavier steel section than the one specified in the plans. (Min. $S_x = 411 \text{ in}^3$)

Note A:
 @ Transverse tie \bar{r} 's (4 per span). Place additional shims at midpoints between tie \bar{r} 's. Securely weld shims to top flange of support beam. Minimum shim size is 6" x flange width.

GENERAL NOTES

All structural steel shall conform to AASHTO Classification M-270 Gr. 36, unless otherwise noted.

Plan dimensions and details relative to existing plans are subject to nominal construction variations. The Contractor shall field verify existing dimensions and details affecting new construction and make necessary approved adjustments prior to construction or ordering of materials. Such variations shall not be cause for additional compensation for a change in scope of the work, however, the Contractor will be paid for the quantity actually furnished at the unit price bid for the work.

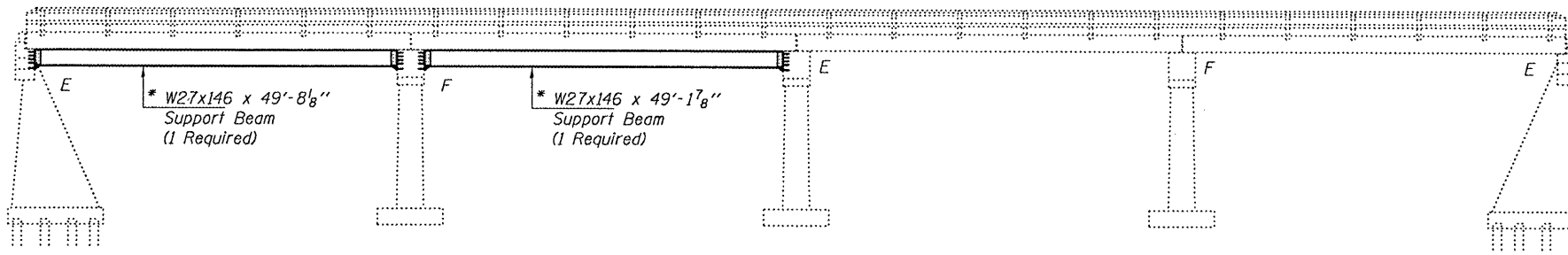
The contractor is advised that the existing PPC Deck Beams are in a deteriorated condition with reduced load carrying capacity. It is the contractor's responsibility to account for the condition of the beams when developing construction procedures.

See Section 584 of the Standard Specifications for Epoxy Grouting of Threaded Rods; Minimum embedment 9".

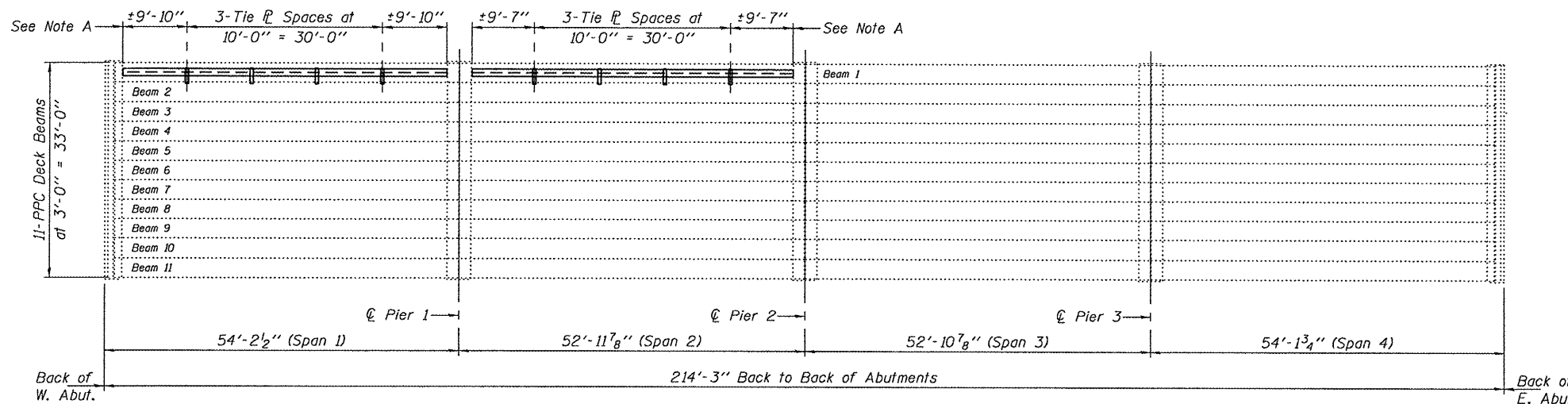
If the contractor's procedure for placement of beams involves placement of cranes or other heavy equipment on the bridge, a detailed procedure shall be submitted to the Engineer for approval. The procedure shall include calculations, prepared and sealed by an Illinois Licensed Structural Engineer, verifying that the equipment and procedure used will not overstress the existing beams. To distribute load to multiple beams and protect the existing surface, in all cases a double layer mat of heavy timbers shall be used at all times under crane tracks or wheels and any outriggers in the down position. If necessary, shims shall be used under the crane mat to ensure uniform contact with the underlying beams.

The cost of epoxy grouting threaded rods on the pier cap, abutments and beams shall be included with Furnishing and Erecting Structural Steel.

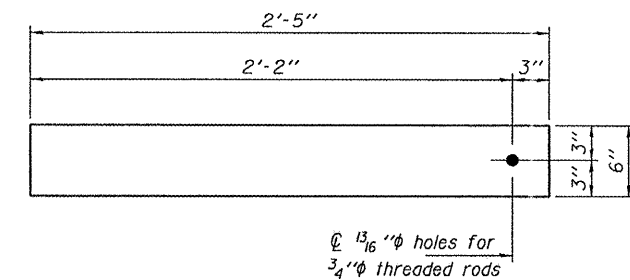
The Contractor has the option of using used steel. See Special Provisions.



ELEVATION



PLAN



TRANSVERSE TIE \bar{r} DETAILS

\bar{r} 1/2" x 2'-5" x 6" (8 Req'd)

TOTAL BILL OF MATERIAL

ITEM	UNIT	QUANTITY
Furnishing and Erecting Structural Steel	Pound	15,670



Expires: November 30, 2012

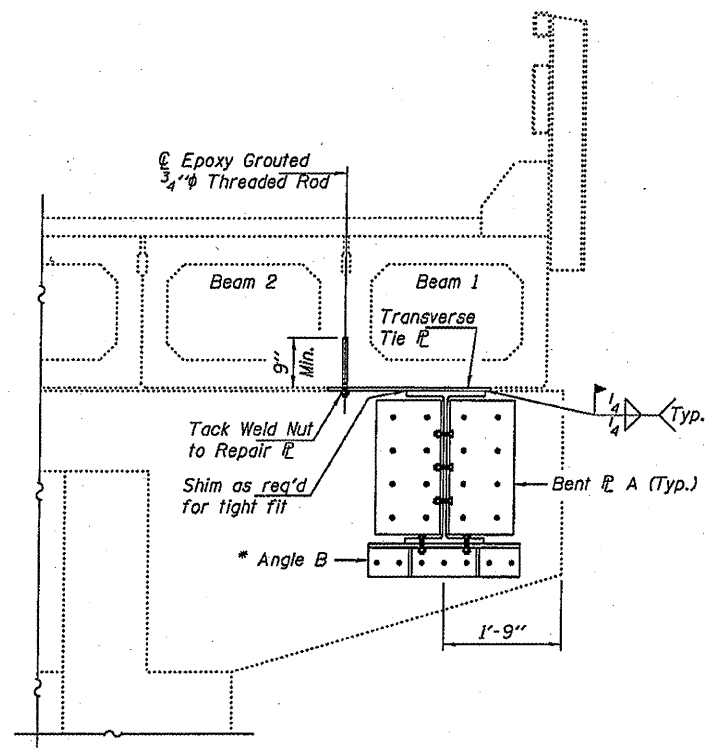
DESIGNED - <i>[Signature]</i>	EXAMINED - <i>[Signature]</i>	DATE - APRIL 29, 2011
CHECKED - <i>[Signature]</i>	PASSED - <i>[Signature]</i>	
DRAWN - Kyle M. Steffen		
CHECKED - <i>[Signature]</i>		

STATE OF ILLINOIS
 DEPARTMENT OF TRANSPORTATION

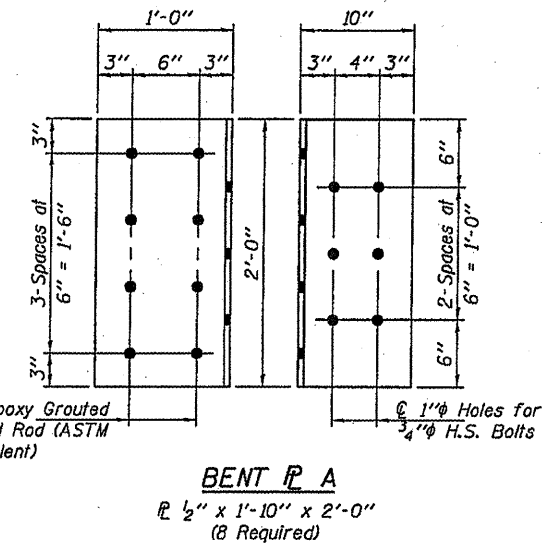
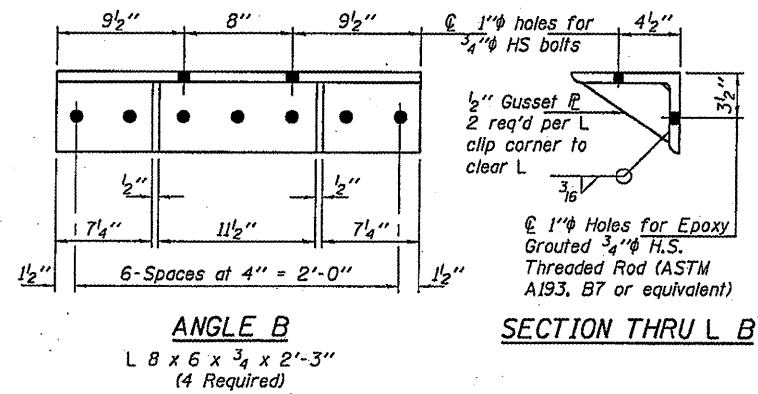
GENERAL PLAN & ELEVATION
 ILLINOIS ROUTE 119 OVER NORTH FORK OF THE VERMILION RIVER
 SN 092-0065

SHEET NO. 1 OF 2 SHEETS

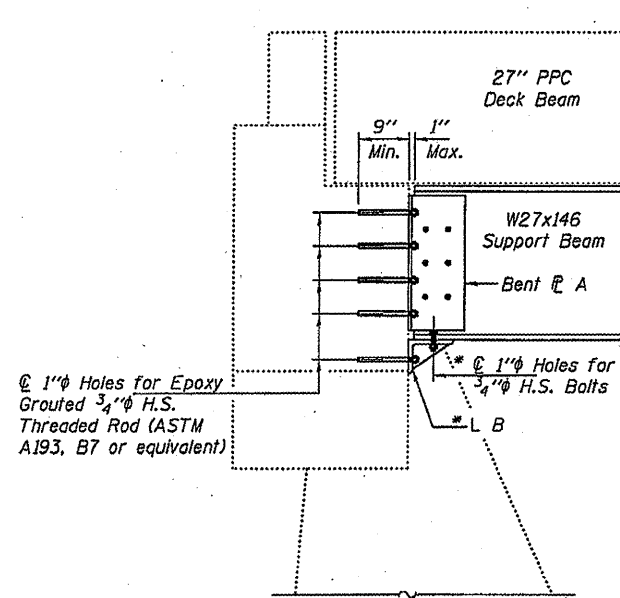
F.A.P. RTE. 711	SECTION POSTING MITIGATION FY2011-3	COUNTY VERMILION	TOTAL SHEETS 10	SHEET NO. 4
CONTRACT NO. 70920			ILLINOIS FED. AID PROJECT	



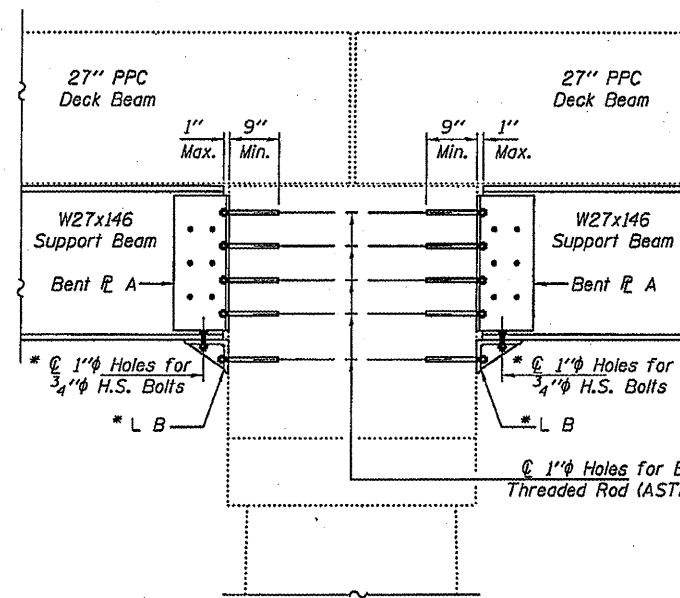
TYPICAL CROSS-SECTION THRU BEAM 1
(West Abutment shown, Piers 1 & 2 similar)



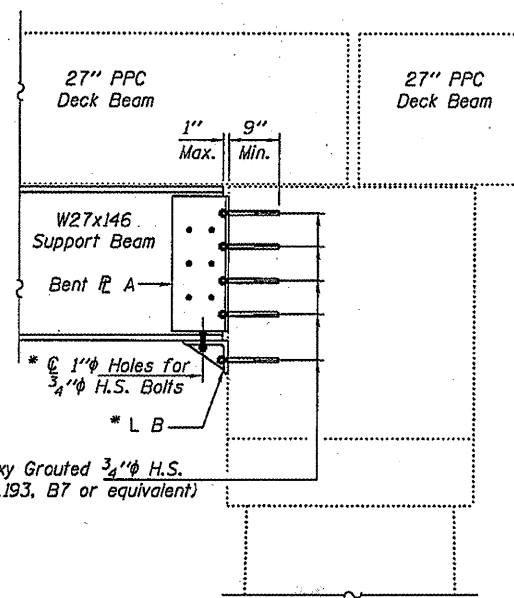
* Use holes in L B to field drill holes in Support Beam.



SECTION THRU ABUTMENT



SECTION THRU PIER 1



SECTION THRU PIER 2

DESIGNED - DAB	EXAMINED - <i>James F. [Signature]</i>
CHECKED - VHV	ACTING ENGINEER OF STRUCTURAL SERVICES
DRAWN - Kyle M. Steffen	PASSED - <i>[Signature]</i>
CHECKED - DAB VHV	ACTING ENGINEER OF BRIDGES AND STRUCTURES

DATE - APRIL 29, 2011

STATE OF ILLINOIS
DEPARTMENT OF TRANSPORTATION

P.P.C. DECK BEAM SUPPORT DETAILS
SN 092-0065
SHEET NO. 2 OF 2 SHEETS

F.A.P. RT# 711	SECTION POSTING MITIGATION FY2011-3	COUNTY VERMILION	TOTAL SHEETS 10	SHEET NO. 5
ILLINOIS FED. AID PROJECT			CONTRACT NO. 70920	

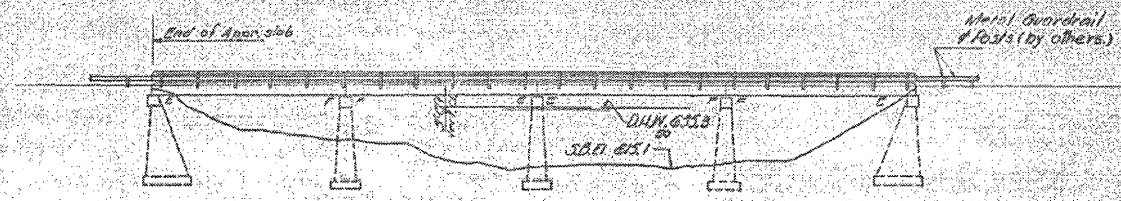
Benchmark: TBM (SE) Top 1st Bolt at S.E. Corner Bridge in curb holding handrail. Elev 641.52.
 Existing Structure:
 Built as S.B.I. Rte. 119, Sec. 116B of Sta. 730+96 in 1932.
 4 Span RCDG with Spill Thru Abutments and R.C. Piers.
 Superstructure to be removed and replaced utilizing stage construction so as to maintain traffic over the structure at all times.
 Existing Structure Number:
 092-0065

STATE OF ILLINOIS
 DEPARTMENT OF TRANSPORTATION

PROJECT NO.	SECTION	SHEET NO.	TOTAL SHEETS
711	VERMILION	16	6

GENERAL NOTES

It shall be the responsibility of the Contractor to verify all dimensions and conditions existing in the field prior to construction and ordering of materials.
 Protective Coat shall not be applied to surfaces to which Waterproofing Membrane Sys. is applied.
 Expansion bolts shall consist of self drilling expansion anchors and 3/4" x 12" hooked bolts.
 Shoulder transition to wingwall shall be dressed with broken concrete.
 Stage construction shall be utilized so as to maintain traffic over the structure at all times.
 Expansion guards which are not cast in the precast unit shall be fabricated and erected in accordance with Article 50.307(c) of the Standard Specifications and are included in quantity of structural steel.
 All structural steel shall be shop pointed with two coats of basic lead silico chromate paint.
 The top surface of the beams shall be finished in accordance with Article 505.06 of the Standard Specifications except that the surface shall not be roughened by brooming. The finished surface shall be free of depressions or high spots with sharp corners.

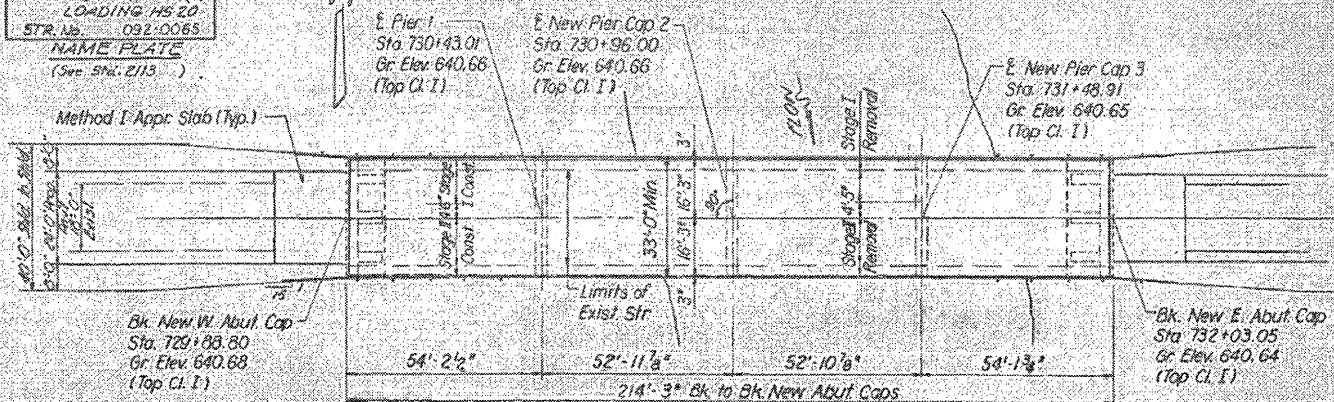


ELEVATION

WATERWAY INFORMATION

Drainage Area: 253 sq. ft.
 Character: level, rolling, cultivated
 Required Opening (50 yd.): 2350 sq. ft.
 Present Opening: 2350 sq. ft.
 Proposed Opening: 2350 sq. ft.
 Q₅₀ = 10,445 c.f.s.
 Q₁₀₀ = 11,870 c.f.s.
 H.W.C.₁₀₀ = 636.8

STATION 730+96
 REBUILT BY
 STATE OF ILLINOIS
 FA.RT.119 SEC.116B BR
 PROJECT BR-F-711(2)
 LOADING HS 20
 STR. NO. 092-0065
 NAME PLATE
 (See Spk. 2113)



PLAN

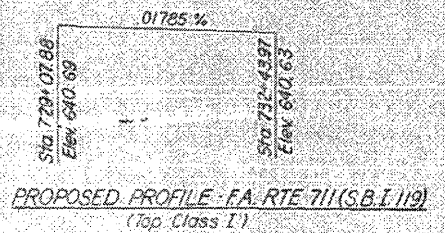
TOTAL BILL OF MATERIAL

Item	Unit	Quantity	Sub	170/yr
Bituminous Concrete Surface Course Class E	Sq. Yd.	87		87
Concrete Bituminous	Sq. Yd.	17		17
Removal of Existing Superstructures	Each			1
Expansion Bolts (3/4" x 12")	Each	158		158
Class A Concrete	Cu. Yd.	17.3	60.9	78.2
Precast Prestressed Concrete Deck Beams	Sq. Ft.	6767		6767
Steel Balling, Type 7	Lin. Ft.	423		423
Reinforcement Bars	Lbs.	1020	7290	8310
Structural Steel	Lbs.	4690		4690
Waterproofing Membrane System	Sq. Yd.	750		750
Protective Coat	Sq. Yd.	70		70
Neoprene Expansion Joint (2")	Lin. Ft.	33		33
Name Plates	Each			1
Temporary Bridge Rail	Lin. Ft.	218		218
Prefabricated Joint Sealer (24")	Lin. Ft.	66		66
Portland Cement Mortar Facing Course	Lin. Ft.	2110		2110
Furnishing Steel H Piles 12" x 36"	Lin. Ft.	100		100

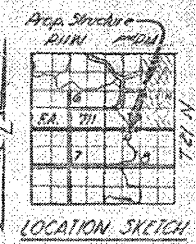
DESIGN STRESSES

FIELD UNITS
 f_c = 4000 psi
 f_s = 20,000 psi (prest.)
 f_s = 35,000 psi (14% strain)
 E = 29,000,000 psi
 Allow 25% for future MS.
 Design Specifications, AASHTO 1977 and 1998 Interim Specifications

PRECAST PREST. UNITS
 f_c = 5000 psi
 f_{ai} = 4000 psi
 f_{ps} = 270,000 psi (9% Strands)
 f_{ps} = 180,000 psi (14% Strands)



PROPOSED PROFILE - FA. RTE 711 (S.B.I. 119)
 (Top Class I)



LOCATION SKETCH

FA. RT. 711 (S.B.I. 119) OVER
 NO. FORK VERMILION RIVER
 FA. RT. 711 SEC. 116B BR
 VERMILION COUNTY
 STATION 730+96

DESIGNED: [Signature]
 CHECKED: [Signature]
 DRAWN: [Signature]
 APPROVED: [Signature]

LOADING HS 20-44

Revised Feb. 28, 1975 S.T.G. J.L.A.
 Revised Feb. 28, 1979 R.K.M. S.A.M. J.P.W.

*POSTING MITIGATION FY2011-3

FILE NAME:	USER NAME = ceorlock.jd	DESIGNED -	REVISED -
c:\pw\work\pvidot\ceorlock.jd\0254134.D	70920-sht-plan.dgn	DRAWN -	REVISED -
	PLOT SCALE = 40.0000' / IN.	CHECKED -	REVISED -
	PLOT DATE = 2/28/2011	DATE -	REVISED -

STATE OF ILLINOIS
 DEPARTMENT OF TRANSPORTATION

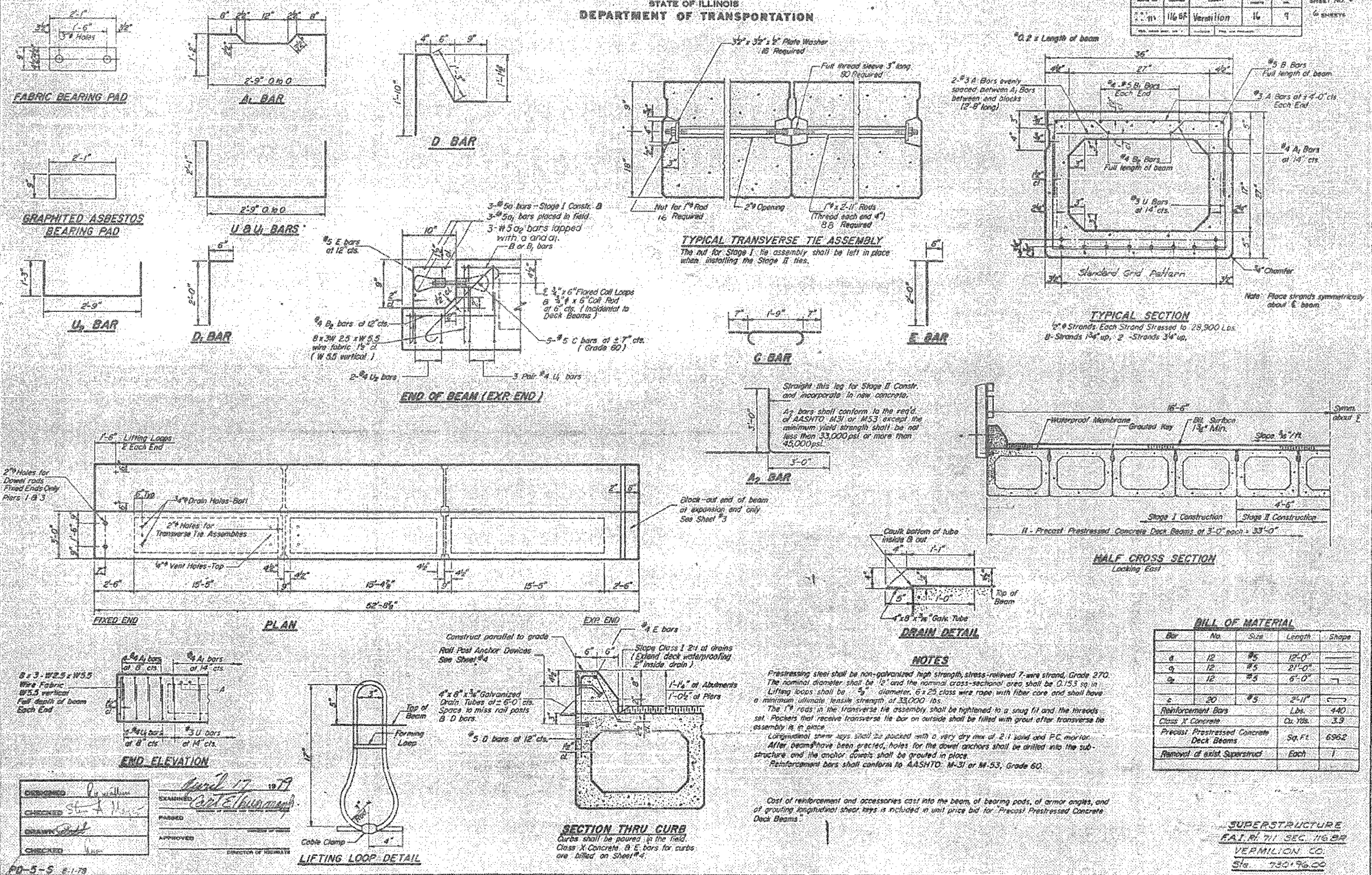
AS-BUILT PLANS
 (FOR INFORMATION ONLY)

SCALE: SHEET NO. 6 OF 10 SHEETS STA. TO STA.

F.A.P. RTE.	SECTION	COUNTY	TOTAL SHEETS	SHEET NO.
711	*	VERMILION	10	6
			CONTRACT NO. 70920	
ILLINOIS FED. AID PROJECT				

STATE OF ILLINOIS
DEPARTMENT OF TRANSPORTATION

DESIGNED	DATE	BY	NO.	SHEET NO.
11/16/87	Verillion	16	7	6 SHEETS



*POSTING MITIGATION FY2011-3

FILE NAME	USER NAME	DESIGNED	REVISED
ce:\work\p\midot\cearlockjd\0254134\070920-sht-plan.dgn	cearlockjd	-	-
PLOT SCALE	DATE	DRAWN	REVISED
40.0000 / IN.	2/28/2011	-	-
PLOT DATE	DATE	CHECKED	REVISED
2/28/2011	-	-	-

STATE OF ILLINOIS
DEPARTMENT OF TRANSPORTATION

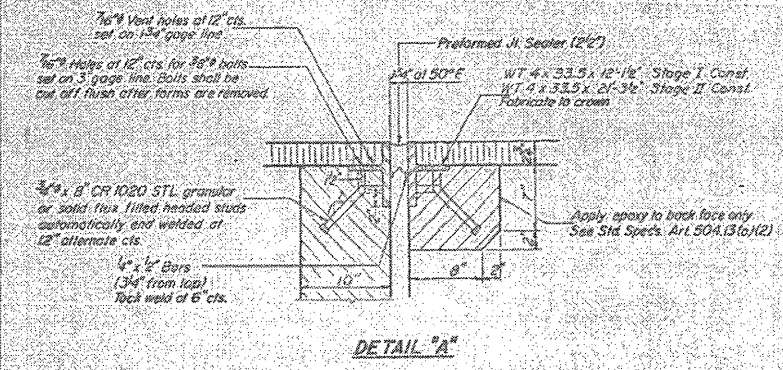
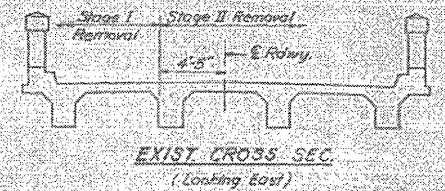
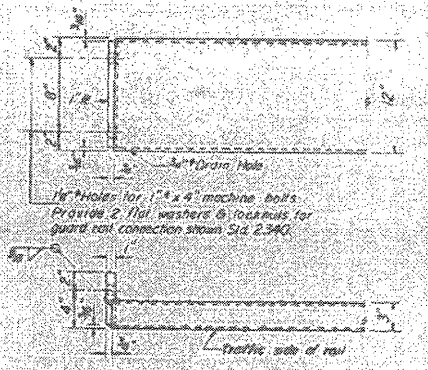
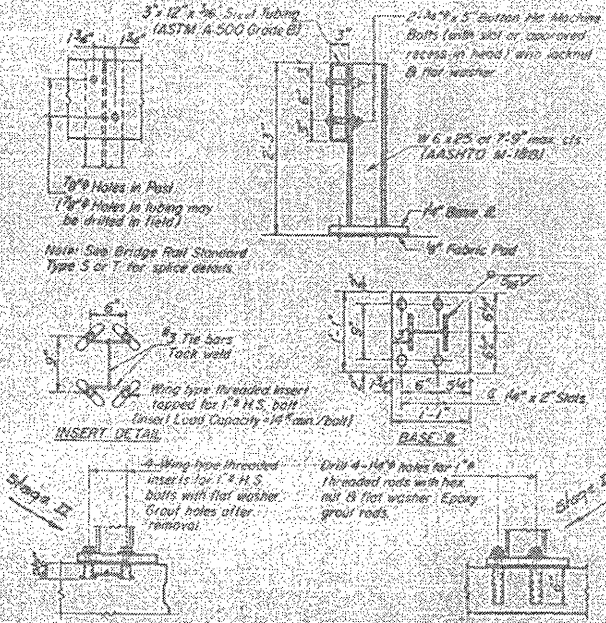
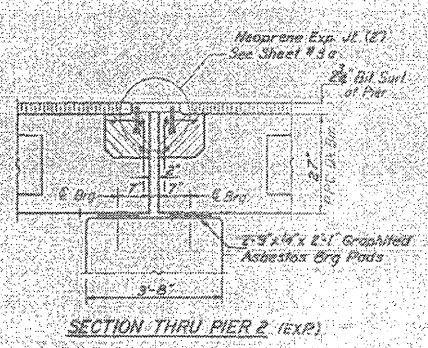
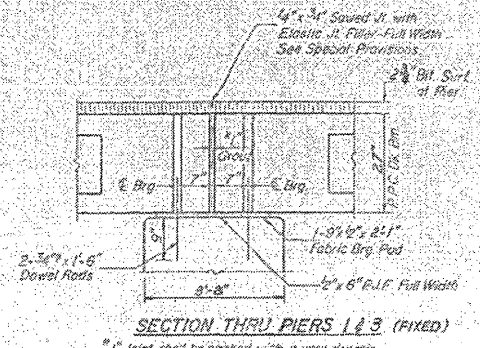
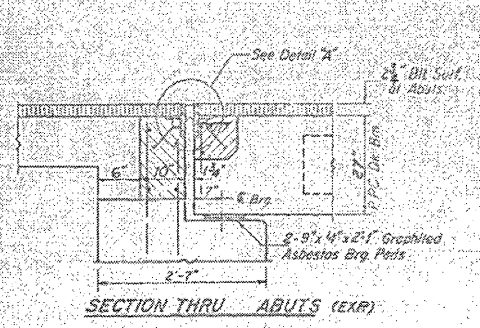
AS-BUILT PLANS
(FOR INFORMATION ONLY)

SCALE: SHEET NO. 7 OF 10 SHEETS STA. TO STA.

F.A.P. RTE.	SECTION	COUNTY	TOTAL SHEETS	SHEET NO.
711		VERMILION	10	7
				CONTRACT NO. 70920
ILLINOIS FED. AID PROJECT				

STATE OF ILLINOIS
DEPARTMENT OF TRANSPORTATION

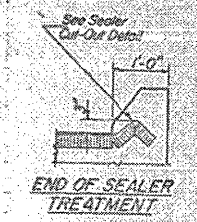
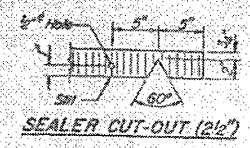
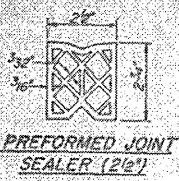
PROJECT NO.	SECTION	COUNTY	TOTAL SHEETS	SHEET NO.
711	VERMILION 16	10	10	8



NOTE: Dimensions are at right angles.
Hatched areas to be poured after beams have been erected and joints grouted.
Ends of beams shall be aligned at the expansion joints. Any linear variation in the beam lengths shall be placed at the fixed joint. See End of Beam Detail for reinforcement.
Hatched Area Quantities:
on the beam are billed with the superstructure sheet #2
on the abutments are billed with the abutment sheet #5.

DESIGNED	EXAMINED
CHECKED	PASSED
DRAWN	APPROVED
CHECKED	

APR 17 1979
[Signature]



SUPERSTRUCTURE DETAILS
E.A. RT 711 SEC 116 BR
VERMILION COUNTY
STA 730+96.00

FILE NAME =	USER NAME =	DESIGNED -	REVISED -
ct:\pwork\pwork\dot\cearlockjd\0254134\0	70920-sh1-plan.dgn	DRAWN -	REVISED -
PLOT SCALE = 40.0000 / IN.	CHECKED -	REVISED -	REVISED -
PLOT DATE = 2/28/2011	DATE -	REVISED -	REVISED -

STATE OF ILLINOIS
DEPARTMENT OF TRANSPORTATION

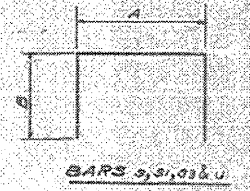
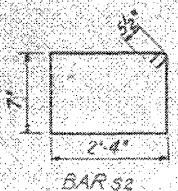
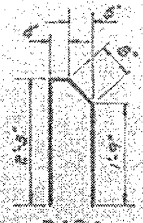
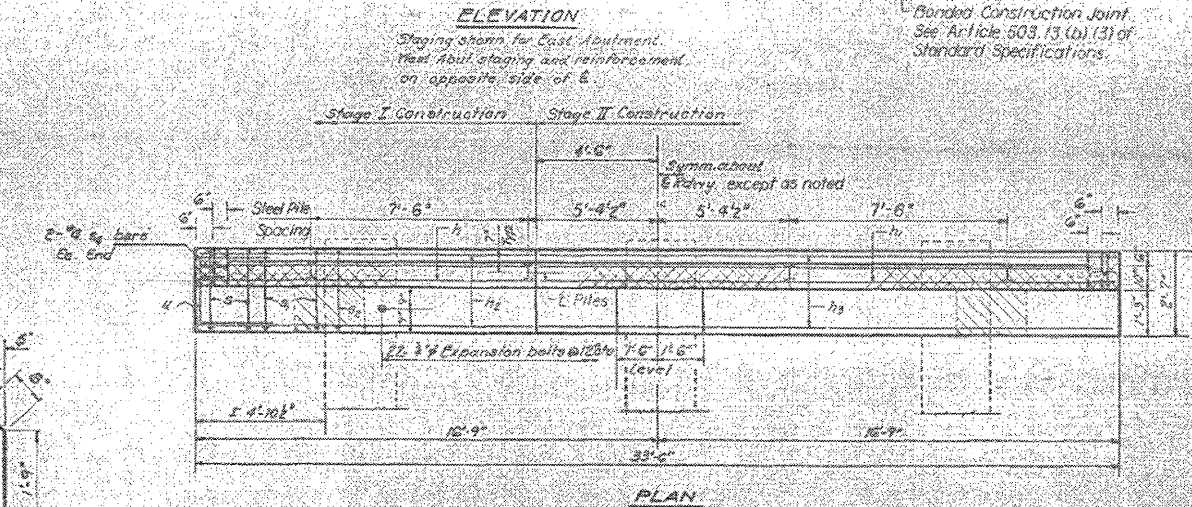
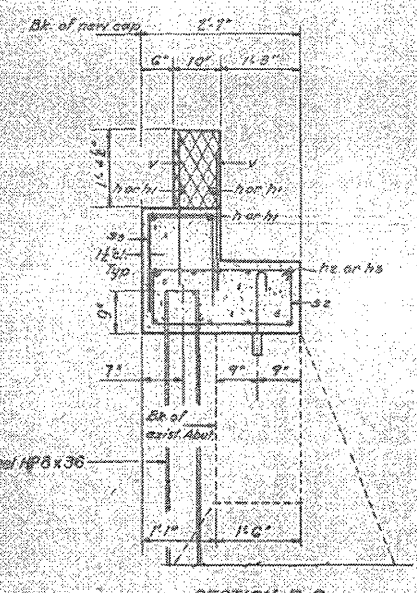
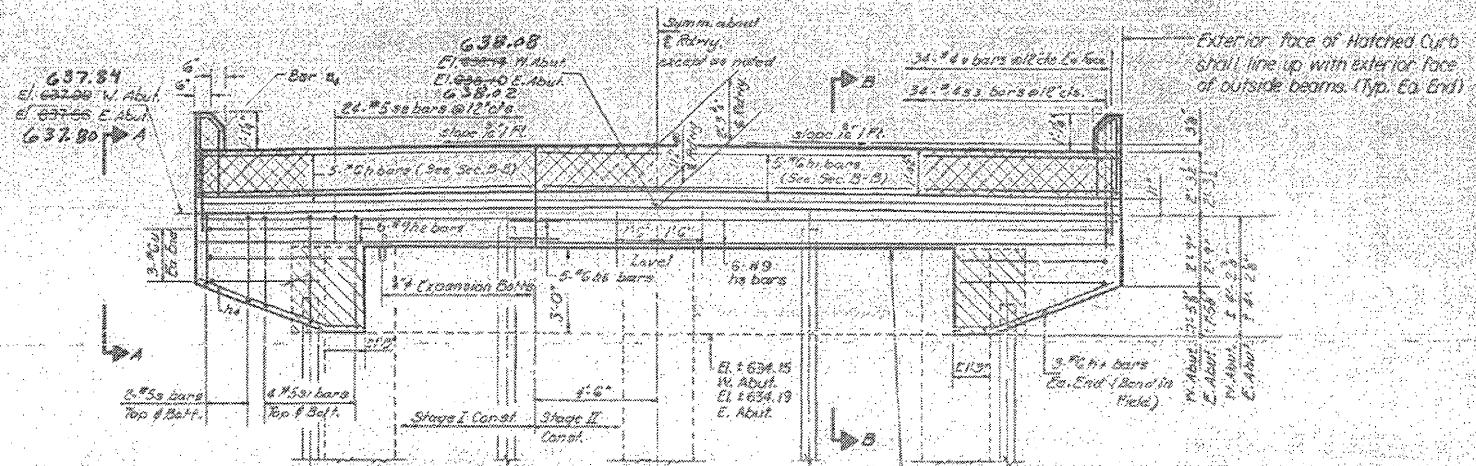
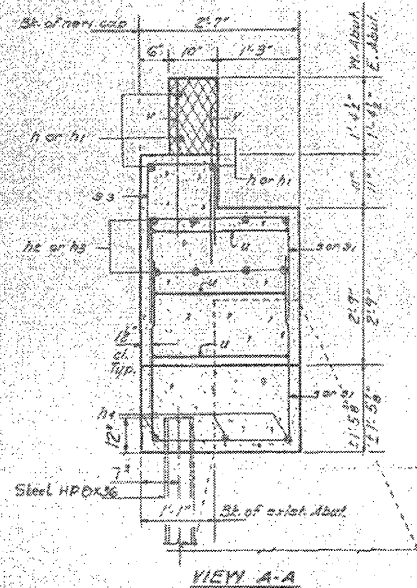
SCALE:	SHEET NO. 8 OF 10 SHEETS	STA.	TO STA.

F.A.P. RTE.	SECTION	COUNTY	TOTAL SHEETS	SHEET NO.
711		VERMILION	10	8
CONTRACT NO. 70920				
ILLINOIS FED. AID PROJECT				

*POSTING MITIGATION FY2011-3

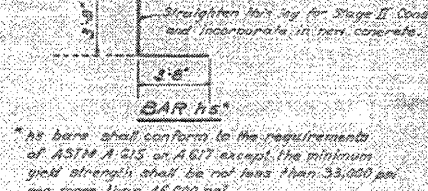
STATE OF ILLINOIS
DEPARTMENT OF TRANSPORTATION

PROJECT NO.	SECTION	SHEET NO.	TOTAL SHEETS
711	VERMILION	16	15



A-B Dimensions

Bar	A	B
s	2'-4"	2'-6"
s1	2'-4"	3'-6"
s3	1'-0"	1'-9"
u	2'-2"	6'-0"



TWO ABUTMENTS
BILL OF MATERIAL

Bar	No.	Size	Length	Shores
s	10	#5	12'-0"	
h1	10	#6	12'-0"	
h2	12	#9	12'-0"	
h3	12	#9	12'-0"	
h4	12	#5	8'-0"	
h5	10	#6	7'-4"	
s	36	#5	7'-4"	
s1	36	#5	9'-4"	
s2	48	#5	8'-9"	
s3	60	#4	4'-6"	
s4	6	#6	5'-0"	
u	12	#6	14'-2"	
v	126	#6	2'-9"	
Reinforcement Bars				Lbs. 3,540
Class 3 Concrete				21,750
Concrete Removal				0
1/2" Expansion Bolts				24
Furnishing Steel				Lm.H. 108
H Piles HP8 x 36				

Notes:
Hatched area indicates concrete removal.
Cross-hatched area to be poured after beams are in place.
Expansion bolts shall be anchored in source concrete.
All edges shall have standard 3" chamfer except as noted.
Clean, straighten existing reinforcement and incorporate in new concrete.
PILE DATA
Type - Steel H Piles HP8 x 36
No. Req'd - 6 + 2 Test Piles, 1 at each abutment.
Length - 18'
Piles shall be placed in holes prepared to the top of existing footing. After placing the piles the prepared holes shall be filled with sand, cast incidental to furnishing Steel H Piles.
The piles shall meet the requirements of AASHTO M222 - Grade 50 Steel.

ABUTMENTS
FA.RT. 711 SEC. 116 BR
VERMILION CO.
STA. 730+96

DESIGNED	P. J. ...
CHECKED	S. ...
DRAWN	S. ...
CHECKED	S. ...

APPROVED
MAY 15 1973
PASSED
W. ...
F. ...

FILE NAME	USER NAME	DESIGNED	REVISED
c:\pwork\pvidat\cearlockj\d0254134\070920-sht-plan.dgn	cearlockj	-	-
PLOT SCALE	48,0000 / IN.	DRAWN	REVISED
PLOT DATE	2/28/2011	CHECKED	REVISED
		DATE	REVISED

STATE OF ILLINOIS
DEPARTMENT OF TRANSPORTATION

AS-BUILT PLANS
(FOR INFORMATION ONLY)

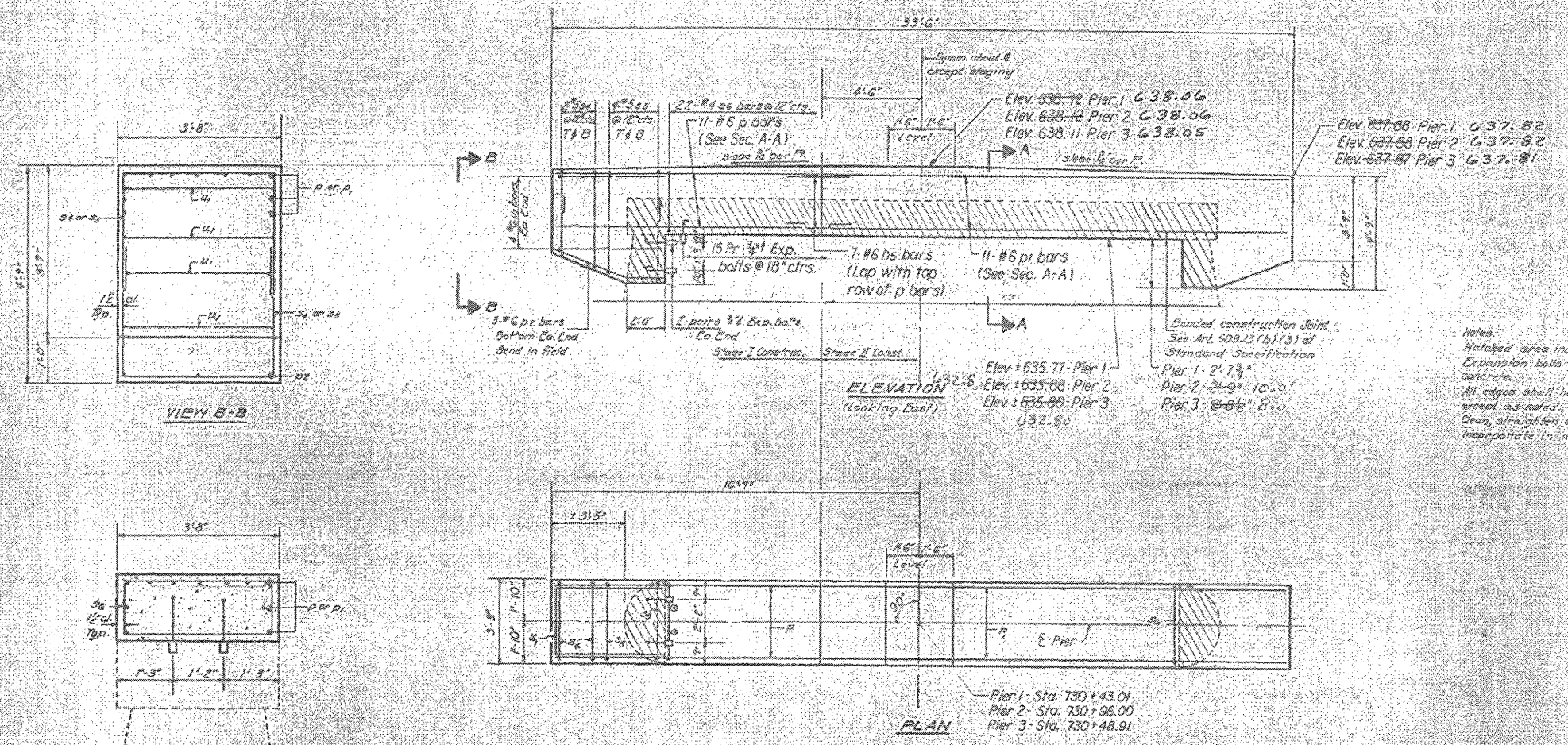
SCALE: SHEET NO. 9 OF 10 SHEETS STA. TO STA.

F.A.P. RTE.	SECTION	COUNTY	TOTAL SHEETS	SHEET NO.
711		VERMILION	10	9
			CONTRACT NO. 70920	
ILLINOIS FED. AID PROJECT				

*POSTING MITIGATION FY2011-3

STATE OF ILLINOIS
DEPARTMENT OF TRANSPORTATION

PROJECT NO.	SECTION	SHEET NO.	TOTAL SHEETS
711	VERMILION 16	14	6 SHEETS



Notes:
Hatched area indicates concrete removal.
Expansion balls shall be anchored in sound concrete.
All edges shall have standard #3 chainbars placed as noted.
Clean, straighten column reinforcement and incorporate in new concrete.

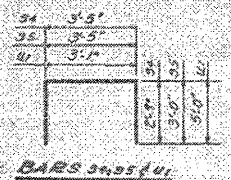
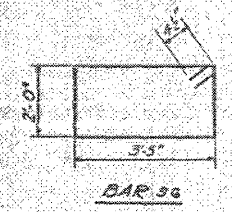
THREE PIERS
BILL OF MATERIAL

Bar	No.	Size	Length	Shape
15	33	#6	8'-0"	L
16	33	#6	12'-0"	---
17	33	#6	2'-0"	---
18	18	#6	3'-0"	---
34	24	#5	8'-11"	□
35	48	#5	7'-5"	□
36	66	#4	11'-7"	□
37	24	#5	15'-1"	□
Class I Concrete	Cu. Yds	466		
Reinforcement Bars	Lbs	3296		
Concrete Removal	Cu. Yds	16		
Expansion Balls	Each	800		

PIERS 1213
PARTIAL SECTION
VERMILION CO.
STA. 730+96

DESIGNED	P. Smith
CHECKED	Suresh T. Desai
DRAWN	Small/Stanley
CHECKED	S.S.

EXAMINED
PASSED
MARCH 19 2013



BAR 34
Straighten this bar for slope II canal and incorporate in new concrete.
*As bars shall conform to the requirements of ASTM A-615 or A-617 except the minimum yield strength shall not be less than 35,000 psi nor more than 45,000 psi.

POSTING MITIGATION FY2011-3

FILE NAME	USER NAME	DESIGNED	REVISED	STATE OF ILLINOIS DEPARTMENT OF TRANSPORTATION	AS-BUILT PLANS (FOR INFORMATION ONLY)	F.A.P. RTE.	SECTION	COUNTY	TOTAL SHEETS	SHEET NO.
...	...	DRAWN	REVISED		SCALE:	711	*	VERMILION	10	10
		CHECKED	REVISED		SHEET NO. 10 OF 10 SHEETS					
		DATE	REVISED		STA.					CONTRACT NO. 70920
					TO STA.					ILLINOIS FED. AID PROJECT