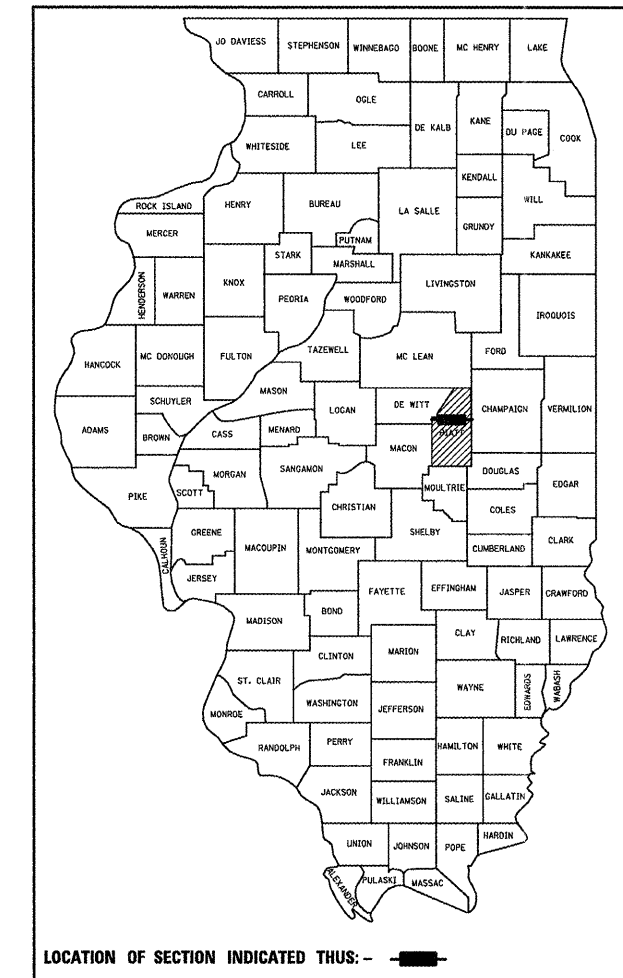


STATE OF ILLINOIS
DEPARTMENT OF TRANSPORTATION
DIVISION OF HIGHWAYS

**PROPOSED
HIGHWAY PLANS**
FAU ROUTE 7533 (CISCO-MONTICELLO RD)
FAS ROUTE 1531 (CISCO-MONTICELLO RD)
SECTION (10,11)RS
MISCELLANEOUS
PIATT COUNTY
600E TO BRIDGE ST IN MONTICELLO

F.A.S. RTE.	SECTION	COUNTY	TOTAL SHEETS	SHEET NO.
1531	(10,11)RS	PIATT	18	1
		ILLINOIS	CONTRACT NO. 70921	

D-95-018-11



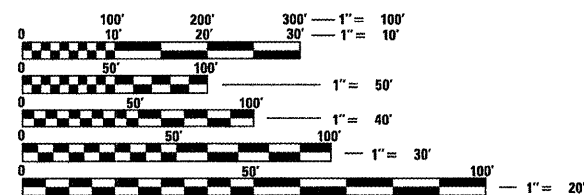
FOR INDEX OF SHEETS, SEE SHEET NO. 2
FOR SUMMARY OF QUANTITIES, SEE SHEET NO. 4

STRUCTURE INFORMATION

S.N.	SCOPE OF WORK
074-2006	HMA RESURFACING(2.5")
074-8058	HMA RESURFACING(2.5")

C-95-018-11

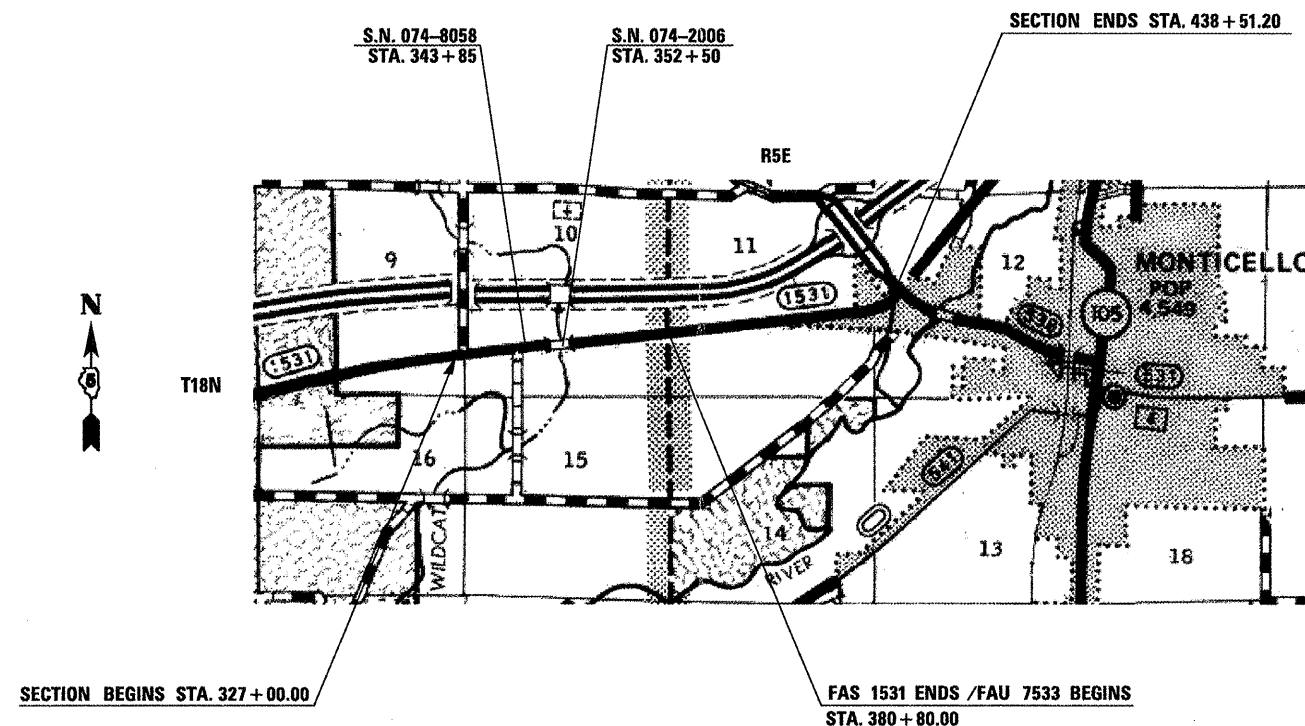
CURRENT ADT	
MAJOR COLLECTOR	
FAS 1531 (CISCO - MONTICELLO RD) = 2000 (2010)	
SU = 4.4%	MU = 0.7%



FULL SIZE PLANS HAVE BEEN PREPARED USING STANDARD ENGINEERING SCALES. REDUCED SIZED PLANS WILL NOT CONFORM TO STANDARD SCALES. IN MAKING MEASUREMENTS ON REDUCED PLANS, THE ABOVE SCALES MAY BE USED.

J.U.L.I.E.
JOINT UTILITY LOCATION INFORMATION FOR EXCAVATION
1-800-892-0123 TOWNSHIPS
OR 811 MONTICELLO, BRANCH

PROJECT ENGINEER: NANCY FASIG
SQUAD LEADER: STEVE COOMBS
(217) 465-4181
CONTRACT NO. 70921



GROSS LENGTH = 11,151.2 FT. = 2.112 MILE
NET LENGTH = 11,151.2 FT. = 2.112 MILE

STATE OF ILLINOIS
DEPARTMENT OF TRANSPORTATION
DIVISION OF HIGHWAYS

SUBMITTED 3/11 20 11

James E. Coombs
DEPUTY DIRECTOR OF HIGHWAYS, REGION ENGINEER

May 13 20 11
Scott E. Stitt, P.E., BC
acting ENGINEER OF DESIGN AND ENVIRONMENT

May 13 20 11
Christopher M. Reed, Jr.
DIRECTOR OF HIGHWAYS, CHIEF ENGINEER

PRINTED BY THE AUTHORITY
OF THE STATE OF ILLINOIS