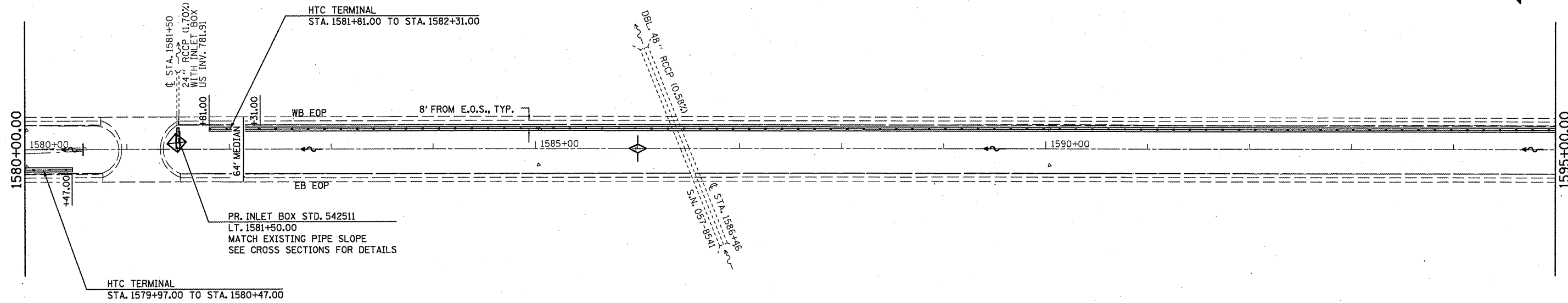


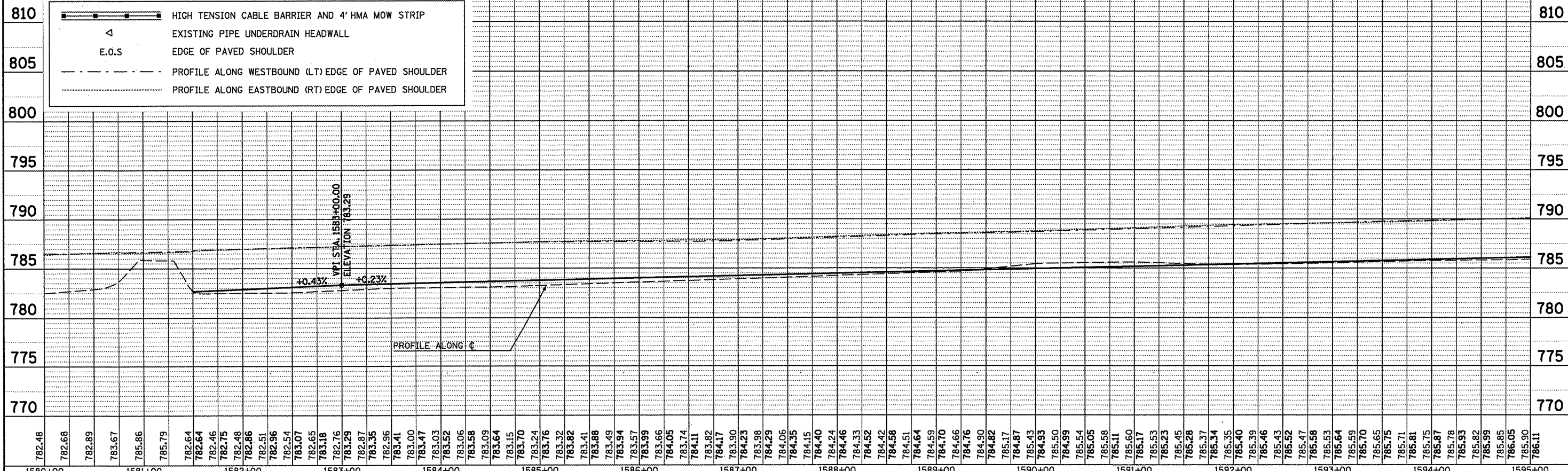
PLAN	SURVEYED	DATE
NOTE BOOK	ALIGNED	BY
NO.	CHECKED	
	DATE	



MEDIAN INLET BOX REMOVAL - 1 EACH
 PIPE CULVERT, CL. A, TY1, 24" - 8 FOOT
 CONCRETE COLLAR - 0.45 CU YD

PROFILE	SURVEYED	DATE
NOTE BOOK	GRADES CHECKED	BY
NO.	DATE	
	STRUCTURE NOTATIONS CHRD	

LEGEND



FILE NAME =	USER NAME = keysrb	DESIGNED -	REVISED -	<p>STATE OF ILLINOIS DEPARTMENT OF TRANSPORTATION</p> <p>REVISOR SHEET 6-6-11 PLAN AND PROFILE</p>	F.A.I. RTE.	SECTION	COUNTY	TOTAL SHEETS	SHEET NO.
o:\pw_work\pw\dots\keysrb\261049\0570927\sh-t-plnprf_50.dgn		DRAWN -	REVISED -		74	FY11 HSIP-5	MCLEAN	101	11
PLOT SCALE = 100.0000' / in.		CHECKED -	REVISED -		CONTRACT NO. 70927				
PLOT DATE = 5/5/2011		DATE -	REVISED -		ILLINOIS FED. AID PROJECT				