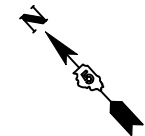
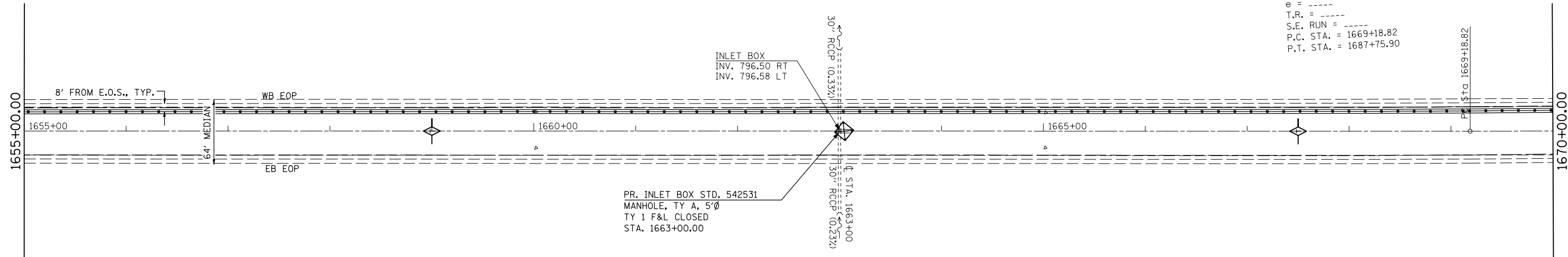


EXIST. CURVE 50
 PI STA. = 1678+48.27
 $\Delta = 6^\circ 11' 25''$ (LT)
 $D = 0^\circ 20' 00''$
 $R = 17,188.88'$
 $T = 929.44'$
 $L = 1,857.08'$
 $E = 25.11'$
 $e = \text{---}$
 $T.R. = \text{---}$
 $S.E. \text{ RUN} = \text{---}$
 $P.C. \text{ STA.} = 1669+18.82$
 $P.T. \text{ STA.} = 1687+75.90$



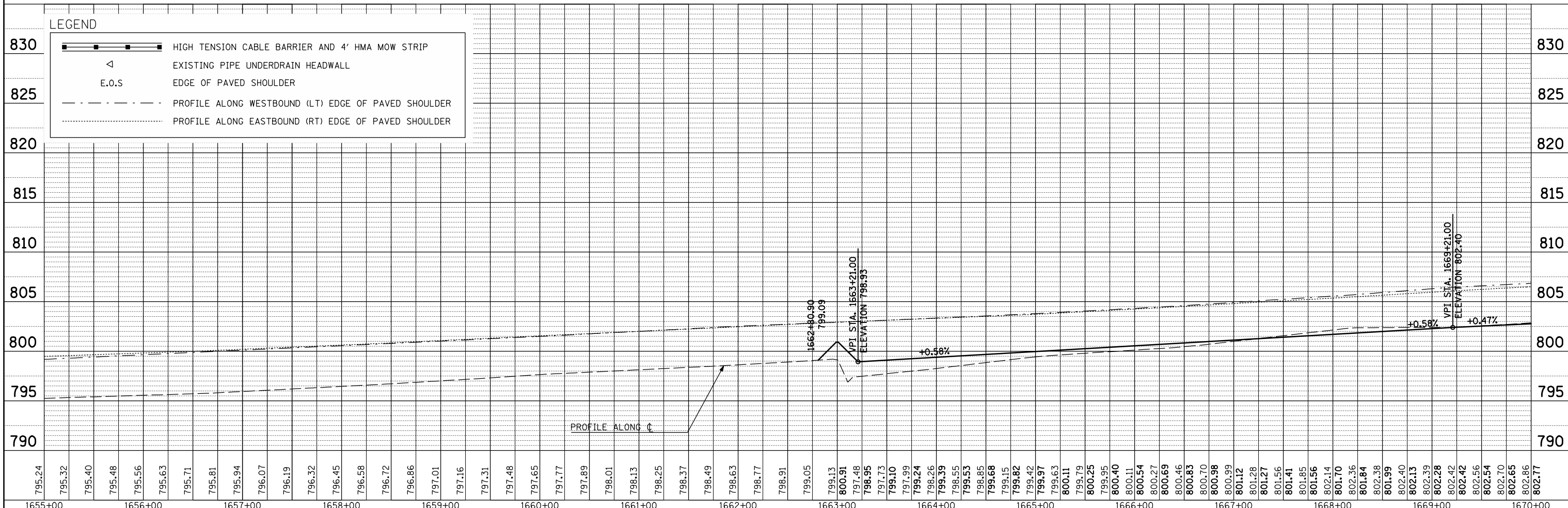
PLAN	SURVEYED	BY	DATE
	PLOTTED		
	NOTED		
	FILE NAME		



PR. INLET BOX STD. 542531
 MANHOLE, TY A, 5'Ø
 TY 1 F&L CLOSED
 STA. 1663+00.00

MEDIAN INLET BOX REMOVAL - 1 EACH
 PIPE CULVERT, CL A, TY1, 24" - 6 FOOT
 PIPE CULVERT, CL A, TY1, 30" - 8 FOOT
 CONCRETE COLLAR - 1.14 CU YD

PROFILE	SURVEYED	BY	DATE
	PLOTTED		
	NOTED		
	FILE NAME		



FILE NAME =	USER NAME = keyarb	DESIGNED -	REVISED -	STATE OF ILLINOIS DEPARTMENT OF TRANSPORTATION	PLAN AND PROFILE				F.A.I. RTE. 74	SECTION FY11 HSIP-5	COUNTY MCLEAN	TOTAL SHEETS 101	SHEET NO. 16
ct:\pwork\pwork\keyarb\d0261049\0570927	shp-plnpr_f_50.dgn	DRAWN -	REVISED -		SCALE:	SHEET NO.	OF SHEETS	STA.	TO STA.	CONTRACT NO. 70927			
		CHECKED -	REVISED -		ILLINOIS FED. AID PROJECT								
		DATE -	REVISED -										