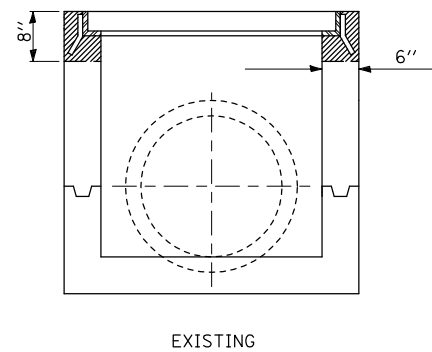
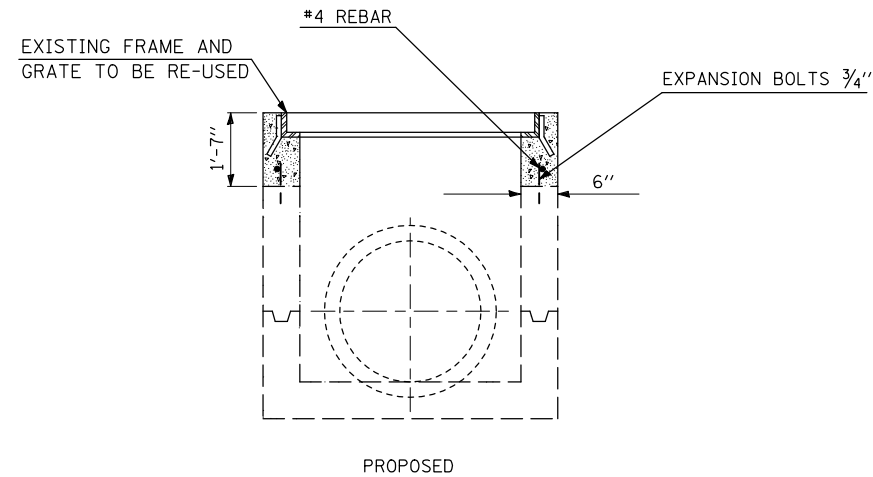
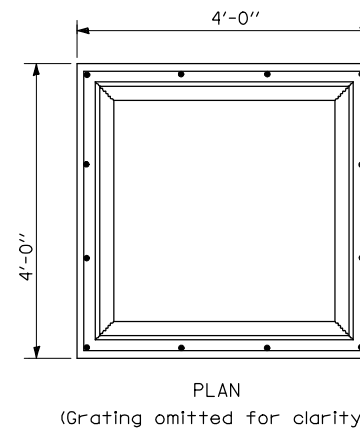

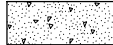


INLET BOXES TO BE ADJUSTED (SPECIAL)



 CONCRETE REMOVAL
 CLASS S.I. CONCRETE

NOTES

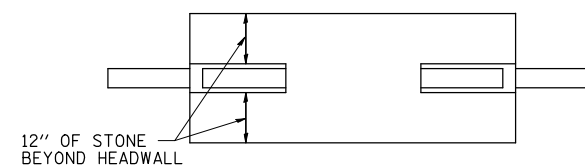
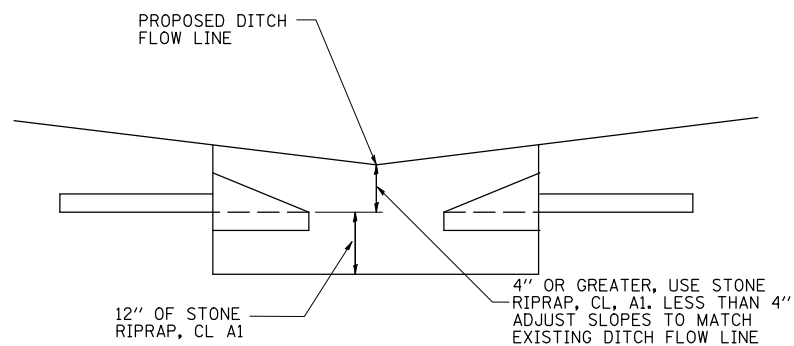
EXPANSION BOLTS SHALL EXTEND A MINIMUM 9" INTO THE EXISTING AND PROPOSED CONCRETE

ALL WORK AND MATERIALS SHALL BE IN ACCORDANCE WITH APPLICABLE PORTIONS OF SECTION 602.

THIS WORK WILL BE PAID FOR AT THE CONTRACT UNIT PRICE EACH FOR "INLETS BOXES TO BE ADJUSTED (SPECIAL)" WHICH SHALL INCLUDE ALL LABOR, EQUIPMENT & MATERIAL NECESSARY TO COMPLETE THE WORK.

ESTIMATE QUANTITIES:
 CONCRETE REMOVAL 0.13 CU YD
 CLASS S.I. CONCRETE 0.37 CU YD
 REINFORCEMENT BARS 9.4 LBS
 EXPANSION BOLTS 12.0 EACH

UNDERDRAIN OUTLET BELOW DITCH GRADE



FILE NAME =	USER NAME = keysrb	DESIGNED -	REVISED -
ct:\pw\work\p\dot\keysrb\0261049\0570927-sht-details.dgn		DRAWN -	REVISED -
	PLOT SCALE = 40.0000' / IN.	CHECKED -	REVISED -
	PLOT DATE = 3/25/2011	DATE -	REVISED -

STATE OF ILLINOIS
DEPARTMENT OF TRANSPORTATION

INLET BOXES TO BE ADJUSTED (SPECIAL) DETAIL
PIPE UNDERDRAIN OUTLET BELOW GRADE DETAIL

SCALE: SHEET NO. OF SHEETS STA. TO STA.

F.A.I. RTE.	SECTION	COUNTY	TOTAL SHEETS	SHEET NO.
74	FY11 HSIP-5	MCLEAN	101	32
FED. ROAD DIST. NO.			ILLINOIS FED. AID PROJECT	
			CONTRACT NO. 70927	