

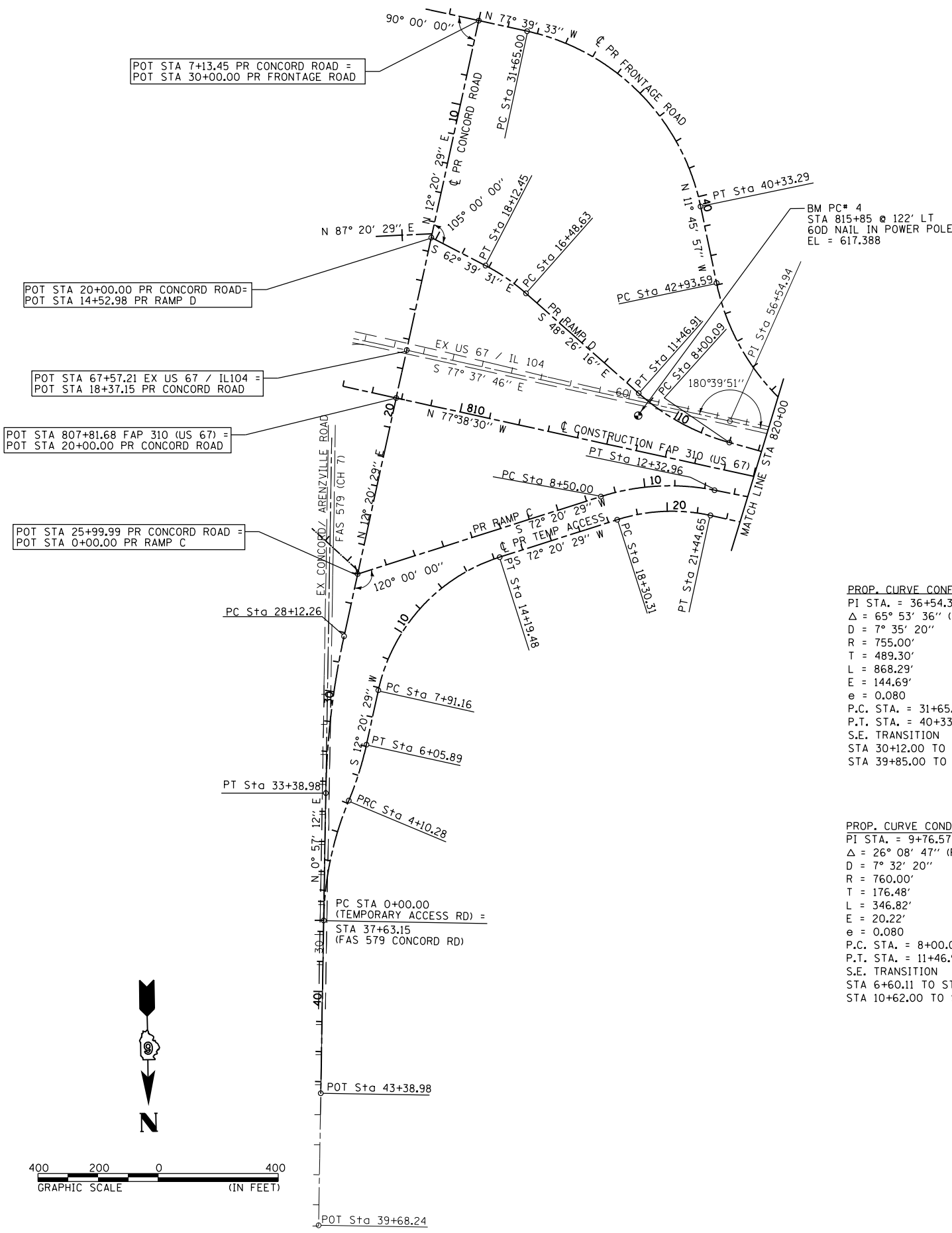
F.A.P. RTE.	SECTION	COUNTY	TOTAL SHEETS	SHEET NO.
310	69-3(3HB)	MORGAN	793	90
STA.		TO STA.		
FED. ROAD DIST. NO.	ILLINOIS	FED. AID PROJECT		

3:58:09 PM

Mar-25-2011 03:58:09PM

\$FILE\$

DESCRIPTION	COORDINATES	
	NORTH	EAST
PR RAMP D		
PC 8+00.09	1,129,445.009	2,237,839.125
PI 9+76.57	1,129,398.096	2,238,009.260
PT 11+46.91	1,129,281.011	2,238,141.311
PC 16+48.63	1,128,948.148	2,238,516.721
PI 17+30.96	1,128,893.529	2,238,578.323
PT 18+12.45	1,128,855.716	2,238,651.454
POT 20+15.77	1,128,762.329	2,238,832.067
PR RAMP C		
POT 0+00.00	1,129,882.835	2,239,077.226
PC 8+50.00	1,129,624.993	2,238,267.280
PI 10+45.63	1,129,565.648	2,238,080.861
PT 12+32.96	1,129,603.690	2,237,888.957
PR TEMP ACCESS		
PC 0+00.00	1,131,036.626	2,239,190.522
PI 2+07.64	1,130,829.012	2,239,187.068
PRC 4+10.28	1,130,637.481	2,239,106.873
PI 5+08.35	1,130,547.014	2,239,068.994
PT 6+05.89	1,130,451.204	2,239,048.032
PC 7+91.16	1,130,270.221	2,239,008.434
PI 11+37.57	1,129,931.816	2,238,934.394
PT 14+19.48	1,129,826.734	2,238,604.306
PC 18+30.31	1,129,702.110	2,238,212.829
PI 19+91.18	1,129,653.313	2,238,059.547
PT 21+44.65	1,129,687.741	2,237,902.411
PR FRONTAGE ROAD		
POT 30+00.00	1,128,039.887	2,238,674.002
PC 31+65.00	1,128,075.152	2,238,512.815
PI 36+54.30	1,128,179.728	2,238,034.816
PT 40+33.29	1,128,658.751	2,237,935.040
PC 42+93.59	1,128,913.577	2,237,881.963
PR CONCORD ROAD		
POT 7+13.45	1,128,039.887	2,238,674.002
POT 14+52.98	1,128,762.329	2,238,832.067
POT 18+37.15	1,129,137.625	2,238,914.179
POT 20+00.00	1,129,296.711	2,238,948.986
POT 25+99.99	1,129,882.835	2,239,077.225
PC 28+12.26	1,130,090.195	2,239,122.594
PI 30+76.49	1,130,348.318	2,239,179.069
PT 33+38.98	1,130,612.511	2,239,183.465



PROP. CURVE RUNARD1-1
 PI STA. = 2+07.64
 $\Delta = 21^\circ 45' 57''$ (RT)
 D = 5' 18' 19"
 R = 1,080.00'
 T = 207.64'
 L = 410.28'
 E = 19.78'
 e = NC
 P.C. STA. = 0+00.00
 P.R.C. STA. = 4+10.28

PROP. CURVE RUNARD1-2
 PI STA. = 5+08.35
 $\Delta = 10^\circ 22' 40''$ (LT)
 D = 5' 18' 19"
 R = 1,080.00'
 T = 98.08'
 L = 195.62'
 E = 4.44'
 e = NC
 P.R.C. STA. = 4+10.28
 P.T. STA. = 6+05.89

PROP. CURVE RUNARD1-3
 PI STA. = 11+37.57
 $\Delta = 60^\circ 00' 00''$ (RT)
 D = 9' 32' 57"
 R = 600.00'
 T = 346.41'
 L = 628.32'
 E = 92.82'
 e = 0.080
 P.C. STA. = 7+91.16
 P.T. STA. = 14+19.48
 S.E. TRANSITION
 STA 6+41.00 TO STA 8+45.00
 STA 13+65.00 TO STA 15+69.00

PROP. CURVE RUNARD1-4
 PI STA. = 19+91.18
 $\Delta = 30^\circ 01' 00''$ (RT)
 D = 9' 32' 57"
 R = 600.00'
 T = 160.86'
 L = 314.33'
 E = 21.19'
 e = 0.080
 P.C. STA. = 18+30.31
 P.T. STA. = 21+44.65
 S.E. TRANSITION
 STA 16+81.00 TO STA 18+85.00
 STA 20+90.00 TO STA 22+94.00

PROP. CURVE CONFR-3
 PI STA. = 36+54.30
 $\Delta = 65^\circ 53' 36''$ (RT)
 D = 7' 35' 20"
 R = 755.00'
 T = 489.30'
 L = 868.29'
 E = 144.69'
 e = 0.080
 P.C. STA. = 31+65.00
 P.T. STA. = 40+33.29
 S.E. TRANSITION
 STA 30+12.00 TO STA 32+24.00
 STA 39+85.00 TO STA 41+63.00

PROP. CURVE CONFR-4
 PI STA. = 47+76.42
 $\Delta = 65^\circ 11' 58''$ (LT)
 D = 7' 35' 20"
 R = 755.00'
 T = 482.84'
 L = 859.15'
 E = 141.19'
 e = 0.080
 P.C. STA. = 42+93.59
 P.T. STA. = 51+52.73
 S.E. TRANSITION
 STA 41+63.00 TO STA 43+41.00
 STA 50+93.00 TO STA 53+05.00

PROP. CURVE COND-1
 PI STA. = 9+76.57
 $\Delta = 26^\circ 08' 47''$ (RT)
 D = 7' 32' 20"
 R = 760.00'
 T = 176.48'
 L = 346.82'
 E = 20.22'
 e = 0.080
 P.C. STA. = 8+00.09
 P.T. STA. = 11+46.91
 S.E. TRANSITION
 STA 6+60.11 TO STA 8+70.11
 STA 10+62.00 TO STA 13+66.00

PROP. CURVE COND-2
 PI STA. = 17+30.96
 $\Delta = 14^\circ 13' 15''$ (LT)
 D = 8' 40' 52"
 R = 660.00'
 T = 82.33'
 L = 163.81'
 E = 5.12'
 e = 0.058
 P.C. STA. = 16+48.63
 P.T. STA. = 18+12.45
 S.E. TRANSITION
 STA 15+69.00 TO STA 16+88.00
 STA 17+73.00 TO STA 18+92.00

PROP. CURVE CONCI
 PI STA. = 10+45.63
 $\Delta = 28^\circ 52' 16''$ (RT)
 D = 7' 32' 20"
 R = 760.00'
 T = 195.64'
 L = 382.96'
 E = 24.78'
 e = 0.080
 P.C. STA. = 8+50.00
 P.T. STA. = 12+32.96
 S.E. TRANSITION
 STA 7+11.00 TO STA 9+19.00

PROP. CURVE CONCORD-1
 PI STA. = 30+76.49
 $\Delta = 11^\circ 23' 17''$ (LT)
 D = 2' 09' 44"
 R = 2,650.00'
 T = 264.23'
 L = 526.71'
 E = 13.14'
 e = 0.047
 P.C. STA. = 28+12.26
 P.T. STA. = 33+38.97
 S.E. TRANSITION
 STA 26+67.00 TO STA 28+60.00
 STA 32+91.00 TO STA 34+84.00

REVISIONS	
NAME	DATE

ILLINOIS DEPARTMENT OF TRANSPORTATION
 ALIGNMENT & BENCHMARK DATA
 SHEET 2 OF 9
 FAP 310 (US 67/IL 104)

DATE _____ DRAWN BY Lin
 CHECKED BY _____