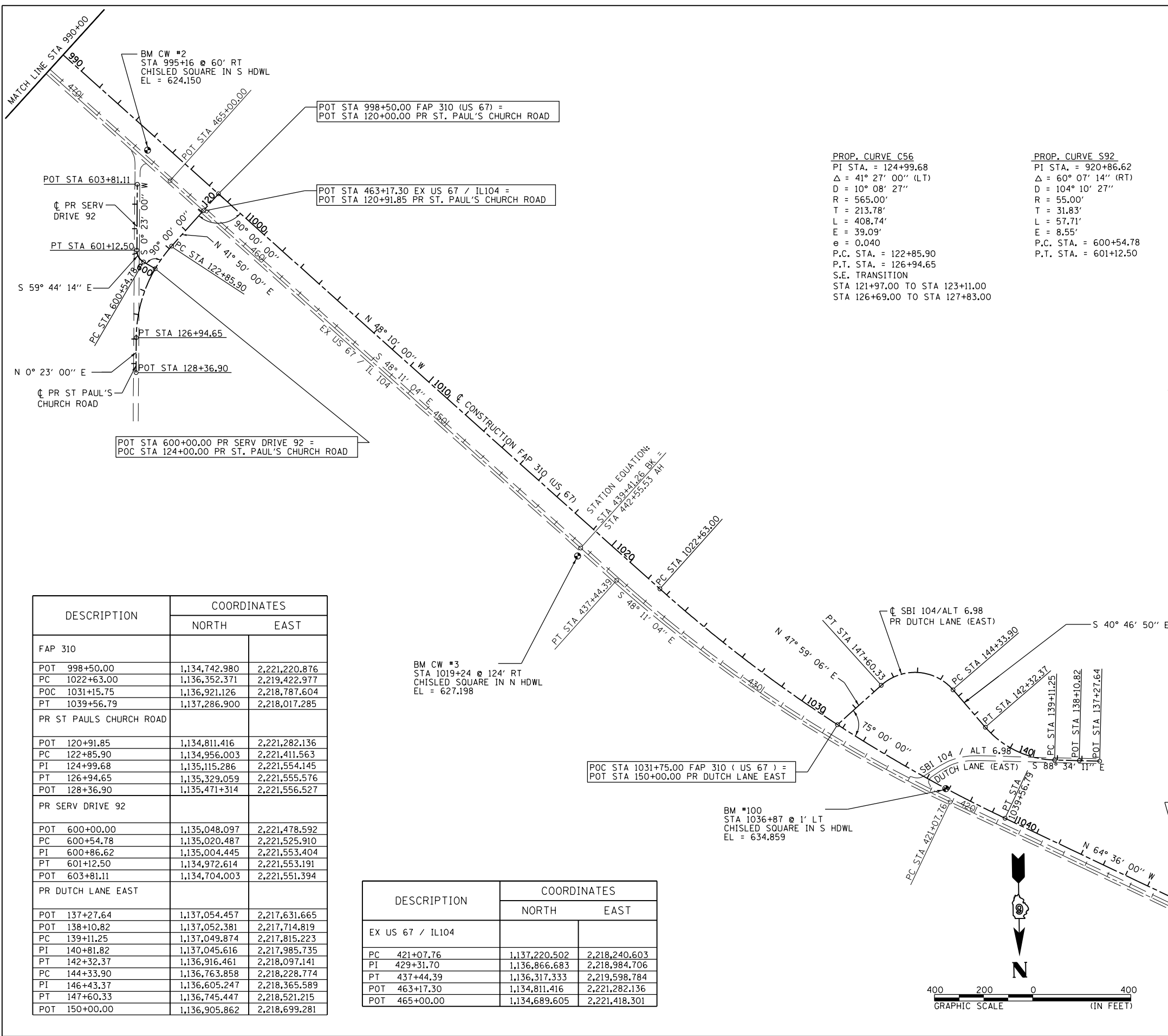


F.A.P. RTE.	SECTION	COUNTY	TOTAL SHEETS	SHEET NO.
310	69-3(3HB)	MORGAN	793	95
STA.		TO STA.		
FED. ROAD DIST. NO.	ILLINOIS	FED. AID PROJECT		

3:58:34 PM  
Mar-25-2011 03:58:34 PM  
\$FILE\$

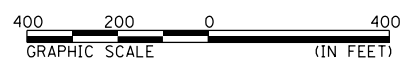


<p><b>PROP. CURVE C56</b>                  PI STA. = 124+99.68  <math>\Delta = 41^\circ 27' 00''</math> (LT)                  D = 10° 08' 27"                  R = 565.00'                  T = 213.78'                  L = 408.74'                  E = 39.09'                  e = 0.040                  P.C. STA. = 122+85.90                  P.T. STA. = 126+94.65                  S.E. TRANSITION                  STA 121+97.00 TO STA 123+11.00                  STA 126+69.00 TO STA 127+83.00</p>	<p><b>PROP. CURVE S92</b>                  PI STA. = 920+86.62  <math>\Delta = 60^\circ 07' 14''</math> (RT)                  D = 104° 10' 27"                  R = 55.00'                  T = 31.83'                  L = 57.71'                  E = 8.55'                  P.C. STA. = 600+54.78                  P.T. STA. = 601+12.50</p>	<p><b>EXIST. CURVE 222</b>                  PI STA. = 429+31.70  <math>\Delta = 16^\circ 23' 05''</math> (RT)                  D = 1° 00' 04"                  R = 5,723.16'                  T = 823.94'                  L = 1,636.63'                  E = 59.01'                  P.C. STA. = 421+07.76                  P.T. STA. = 437+44.39</p>	<p><b>PROP. CURVE MLE18</b>                  PI STA. = 1031+15.75  <math>\Delta = 16^\circ 26' 00''</math> (LT)                  D = 0° 58' 13"                  R = 5,905.50'                  T = 852.75'                  L = 1,693.79'                  E = 61.25'                  e = 0.033                  P.C. STA. = 1022+63.00                  P.T. STA. = 1039+56.79                  S.E. TRANSITION                  STA 1021+20.00 TO STA 1023+13.00                  STA 1039+07.00 TO STA 1041+00.00</p>
--	---	--	--

<p><b>PROP. CURVE C40</b>                  PI STA. = 140+81.82  <math>\Delta = 47^\circ 47' 21''</math> (RT)                  D = 14° 52' 55"                  R = 385.00'                  T = 170.57'                  L = 321.12'                  E = 36.09'                  e = 0.060                  P.C. STA. = 139+11.25                  P.T. STA. = 142+32.37                  S.E. TRANSITION                  STA 138+04.00 TO STA 139+47.00                  STA 141+97.00 TO STA 143+00.00</p>	<p><b>PROP. CURVE C41</b>                  PI STA. = 146+43.37  <math>\Delta = 91^\circ 14' 04''</math> (LT)                  D = 27° 56' 57"                  R = 205.00'                  T = 209.47'                  L = 326.43'                  E = 88.09'                  e = 0.040                  P.C. STA. = 144+33.90                  P.T. STA. = 147+60.33                  S.E. TRANSITION                  STA 143+60.00 TO STA 144+55.00                  STA 147+39.00 TO STA 148+34.00</p>
--	--

DESCRIPTION	COORDINATES	
	NORTH	EAST
FAP 310		
POT 998+50.00	1,134,742.980	2,221,220.876
PC 1022+63.00	1,136,352.371	2,219,422.977
POC 1031+15.75	1,136,921.126	2,218,787.604
PT 1039+56.79	1,137,286.900	2,218,017.285
PR ST PAULS CHURCH ROAD		
POT 120+91.85	1,134,811.416	2,221,282.136
PC 122+85.90	1,134,956.003	2,221,411.563
PI 124+99.68	1,135,115.286	2,221,554.145
PT 126+94.65	1,135,329.059	2,221,555.576
POT 128+36.90	1,135,471+314	2,221,556.527
PR SERV DRIVE 92		
POT 600+00.00	1,135,048.097	2,221,478.592
PC 600+54.78	1,135,020.487	2,221,525.910
PI 600+86.62	1,135,004.445	2,221,553.404
PT 601+12.50	1,134,972.614	2,221,553.191
POT 603+81.11	1,134,704.003	2,221,551.394
PR DUTCH LANE EAST		
POT 137+27.64	1,137,054.457	2,217,631.665
POT 138+10.82	1,137,052.381	2,217,714.819
PC 139+11.25	1,137,049.874	2,217,815.223
PI 140+81.82	1,137,045.616	2,217,985.735
PT 142+32.37	1,136,916.461	2,218,097.141
PC 144+33.90	1,136,763.858	2,218,228.774
PI 146+43.37	1,136,605.247	2,218,365.589
PT 147+60.33	1,136,745.447	2,218,521.215
POT 150+00.00	1,136,905.862	2,218,699.281

DESCRIPTION	COORDINATES	
	NORTH	EAST
EX US 67 / IL104		
PC 421+07.76	1,137,220.502	2,218,240.603
PI 429+31.70	1,136,866.683	2,218,984.706
PT 437+44.39	1,136,317.333	2,219,598.784
POT 463+17.30	1,134,811.416	2,221,282.136
POT 465+00.00	1,134,689.605	2,221,418.301



REVISIONS	
NAME	DATE

ILLINOIS DEPARTMENT OF TRANSPORTATION  
 ALIGNMENT & BENCHMARK DATA  
 SHEET 7 OF 9  
 FAP 310 (US 67/IL 104)  
 DATE \_\_\_\_\_  
 DRAWN BY Lin  
 CHECKED BY \_\_\_\_\_