

F.A.P. RTE.	SECTION	COUNTY	TOTAL SHEETS	SHEET NO.
310	69-3(3HB)	MORGAN	793	103
STA.		TO STA.		
FED. ROAD DIST. NO.		ILLINOIS	FED. AID PROJECT	

1:09:56 PM
Mar-29-2011 01:09:56PM

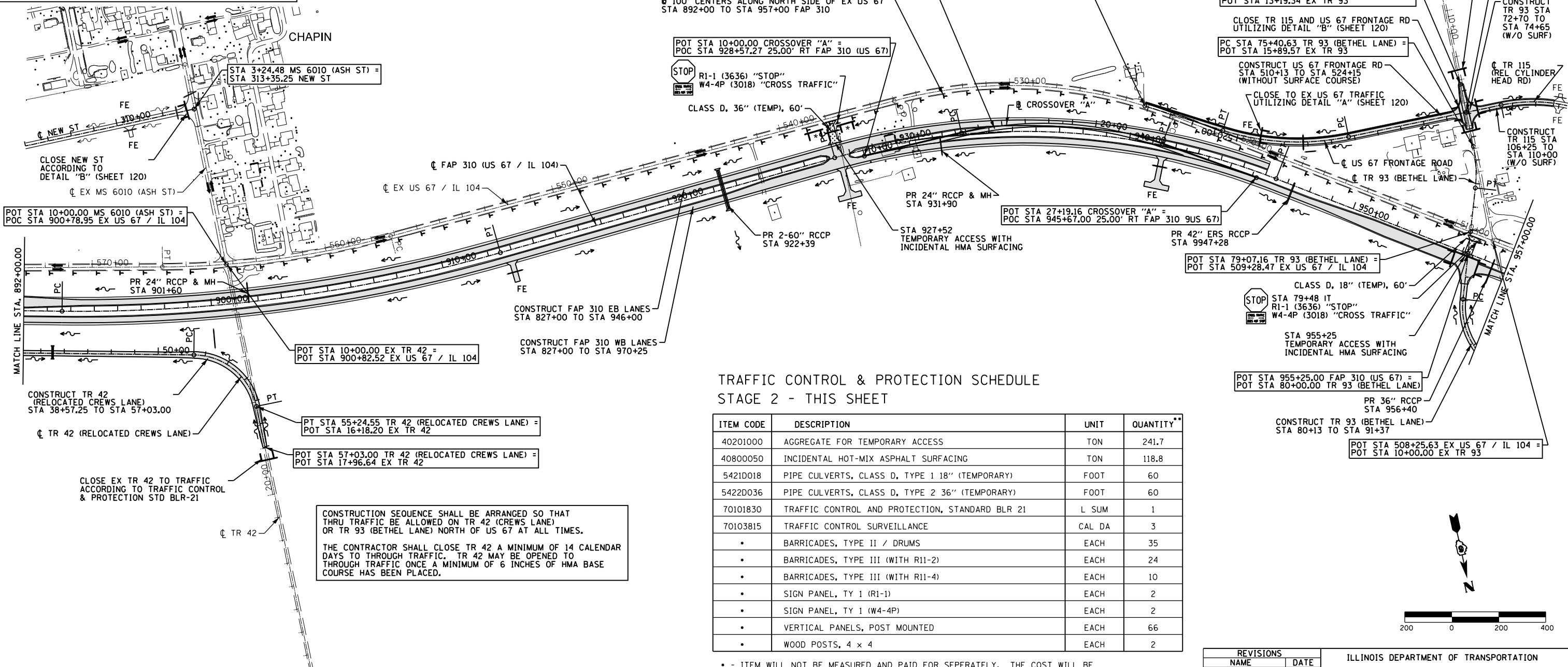
LEGEND

- STAGE 2 CONSTRUCTION
- STAGE 2 PAVEMENT REMOVAL
- AGGREGATE FOR TEMPORARY ACCESS
- TYPE III BARRICADES WITH R11-2 (4830) "ROAD CLOSED"
- TYPE III BARRICADES WITH R11-4 (4830) "ROAD CLOSED TO THRU TRAFFIC"
- PROPOSED VP-1L (1236) "VERTICAL PANELS"
- DIRECTION OF TRAFFIC

UTILIZE TRAFFIC CONTROL & PROTECTION STANDARDS 701001, 701006, AND 701011 FOR CONSTRUCTION ADJACENT TO ROADWAYS OPEN TO TRAFFIC.

W20-1 (4848) "ROAD CONSTRUCTION AHEAD" SHALL BE INSTALLED ON ALL SIDE ROADS WITHIN 200' OF CONSTRUCTION ACTIVITIES AND AS DIRECTED BY THE ENGINEER.

ALL SIGNS SHALL BE MOUNTED ACCORDING TO STANDARD 701901 OR METHOD APPROVED BY THE ENGINEER.



**TRAFFIC CONTROL & PROTECTION SCHEDULE
STAGE 2 - THIS SHEET**

ITEM CODE	DESCRIPTION	UNIT	QUANTITY**
40201000	AGGREGATE FOR TEMPORARY ACCESS	TON	241.7
40800050	INCIDENTAL HOT-MIX ASPHALT SURFACING	TON	118.8
5421D018	PIPE CULVERTS, CLASS D, TYPE 1 18" (TEMPORARY)	FOOT	60
5422D036	PIPE CULVERTS, CLASS D, TYPE 2 36" (TEMPORARY)	FOOT	60
70101830	TRAFFIC CONTROL AND PROTECTION, STANDARD BLR 21	L SUM	1
70103815	TRAFFIC CONTROL SURVEILLANCE	CAL DA	3
	BARRICADES, TYPE II / DRUMS	EACH	35
	BARRICADES, TYPE III (WITH R11-2)	EACH	24
	BARRICADES, TYPE III (WITH R11-4)	EACH	10
	SIGN PANEL, TY 1 (R1-1)	EACH	2
	SIGN PANEL, TY 1 (W4-4P)	EACH	2
	VERTICAL PANELS, POST MOUNTED	EACH	66
	WOOD POSTS, 4 x 4	EACH	2

- * - ITEM WILL NOT BE MEASURED AND PAID FOR SEPARATELY. THE COST WILL BE INCLUDED IN THE CONTRACT UNIT BID PRICES OF THE TRAFFIC CONTROL PAY ITEMS IN THE CONTRACT.
- ** - QUANTITY MAY BE ADJUSTED ACCORDING TO SITE CONDITIONS AND AS DIRECTED BY THE ENGINEER.

SEE SHEET 125 FOR STAGE CONSTRUCTION PAVEMENT MARKING SCHEDULE

CONSTRUCTION SEQUENCE SHALL BE ARRANGED SO THAT THRU TRAFFIC BE ALLOWED ON TR 42 (CREWS LANE) OR TR 93 (BETHEL LANE) NORTH OF US 67 AT ALL TIMES.

THE CONTRACTOR SHALL CLOSE TR 42 A MINIMUM OF 14 CALENDAR DAYS TO THROUGH TRAFFIC. TR 42 MAY BE OPENED TO THROUGH TRAFFIC ONCE A MINIMUM OF 6 INCHES OF HMA BASE COURSE HAS BEEN PLACED.

REVISIONS

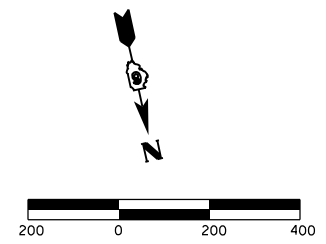
NAME	DATE

ILLINOIS DEPARTMENT OF TRANSPORTATION

**TRAFFIC CONTROL & STAGING
STAGE 2 - 892+00 TO 957+00
FAP 310 (US 67/IL 104)
SHEET 5 OF 27**

DATE 7/09

DRAWN BY SEB
CHECKED BY



\$FILE\$