

F.A.P. RTE.	SECTION	COUNTY	TOTAL SHEETS	SHEET NO.
310	69-3(3HB)	MORGAN	793	104
STA.		TO STA.		
FED. ROAD DIST. NO.	ILLINOIS	FED. AID PROJECT		

TRAFFIC CONTROL & PROTECTION SCHEDULE
STAGE 2 - THIS SHEET

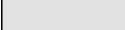






ITEM CODE	DESCRIPTION	UNIT	QUANTITY**
70101830	TRAFFIC CONTROL AND PROTECTION, STANDARD BLR 21	L SUM	1
5422D030	PIPE CULVERTS, CLASS D, TYPE 2 30" (TEMPORARY)	FOOT	120
•	BARRICADES, TYPE II / DRUMS	EACH	20
•	BARRICADES, TYPE III (WITH R11-2)	EACH	2
•	VERTICAL PANELS, POST MOUNTED	EACH	25

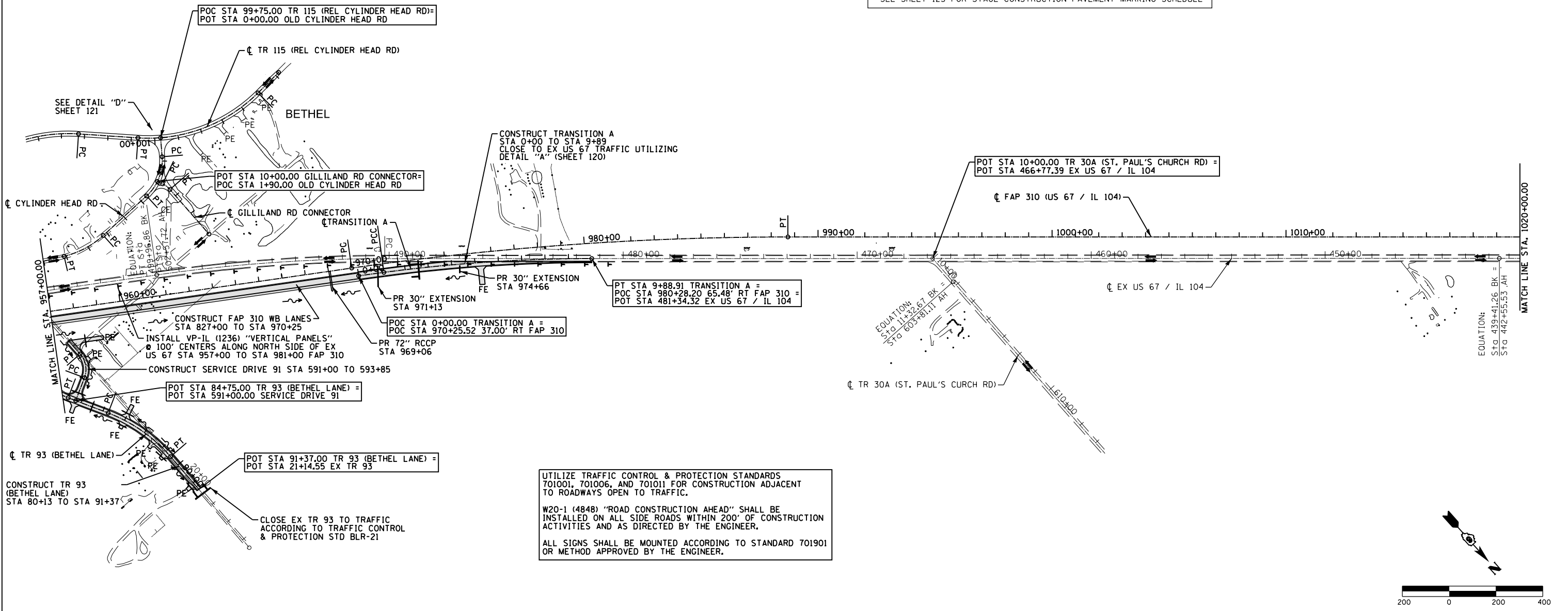
- ITEM WILL NOT BE MEASURED AND PAID FOR SEPERATELY. THE COST WILL BE INCLUDED IN THE CONTRACT UNIT BID PRICES OF THE TRAFFIC CONTROL PAY ITEMS IN THE CONTRACT.
- ** - QUANTITY MAY BE ADJUSTED ACCORDING TO SITE CONDITIONS AND AS DIRECTED BY THE ENGINEER.

SEE SHEET 125 FOR STAGE CONSTRUCTION PAVEMENT MARKING SCHEDULE

1:10:02 PM
Mar-29-2011 01:10:02PM

LEGEND

-  STAGE 2 CONSTRUCTION
-  STAGE 2 PAVEMENT REMOVAL
-  AGGREGATE FOR TEMPORARY ACCESS
-  TYPE III BARRICADES WITH R11-2 (4830) "ROAD CLOSED"
-  TYPE III BARRICADES WITH R11-4 (4830) "ROAD CLOSED TO THRU TRAFFIC"
-  PROPOSED VP-IL (1236) "VERTICAL PANELS"
-  DIRECTION OF TRAFFIC



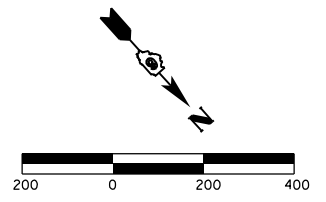
UTILIZE TRAFFIC CONTROL & PROTECTION STANDARDS 701001, 701006, AND 701011 FOR CONSTRUCTION ADJACENT TO ROADWAYS OPEN TO TRAFFIC.

W20-1 (4848) "ROAD CONSTRUCTION AHEAD" SHALL BE INSTALLED ON ALL SIDE ROADS WITHIN 200' OF CONSTRUCTION ACTIVITIES AND AS DIRECTED BY THE ENGINEER.

ALL SIGNS SHALL BE MOUNTED ACCORDING TO STANDARD 701901 OR METHOD APPROVED BY THE ENGINEER.

CONSTRUCTION SEQUENCE SHALL BE ARRANGED SO THAT THRU TRAFFIC BE ALLOWED ON TR 42 (CREWS LANE) OR TR 93 (BETHEL LANE) NORTH OF US 67 AT ALL TIMES

THE CONTRACTOR SHALL CLOSE TR 93 A MINIMUM OF 14 CALENDAR DAYS TO THROUGH TRAFFIC. TR 93 MAY BE OPENED TO THROUGH TRAFFIC ONCE A MINIMUM OF 6 INCHES OF HMA BASE COURSE HAS BEEN PLACED.



REVISIONS	
NAME	DATE

ILLINOIS DEPARTMENT OF TRANSPORTATION

TRAFFIC CONTROL & STAGING
STAGE 2 - 957+00 TO 1020+00
FAP 310 (US 67/IL 104)
SHEET 6 OF 27

DATE 7/09

DRAWN BY SEB
CHECKED BY

\$ FILE \$