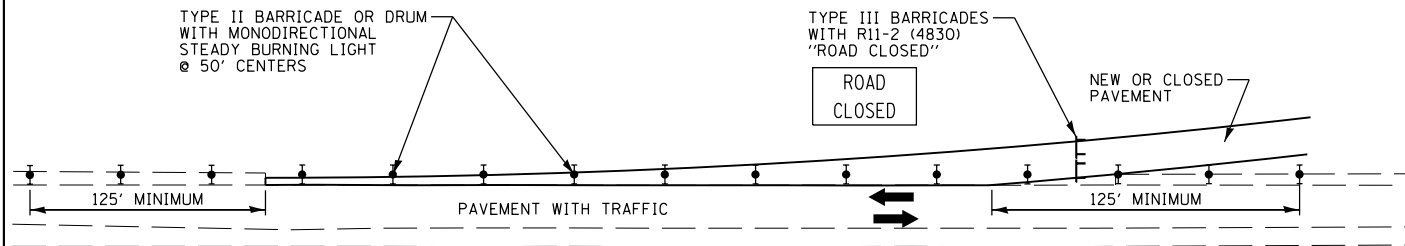


F.A.P. RTE.	SECTION	COUNTY	TOTAL SHEETS	SHEET NO.
310	69-3(3HB)	MORGAN	793	120
STA.		TO STA.		
FED. ROAD DIST. NO.		ILLINOIS	FED. AID PROJECT	

1:11:41 PM
Mar-29-2011 01:11:41 PM

DETAIL "A" - PAVEMENT CLOSURE

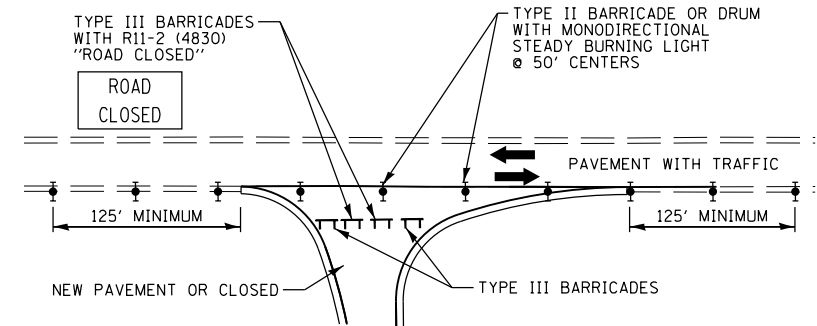
NOT TO SCALE



TRAFFIC CONTROL SET UP FOR DETAIL "A" WILL NOT BE MEASURED AND PAID FOR SEPARATELY. THE COST WILL BE CONSIDERED TO BE INCLUDED IN THE CONTRACT UNIT BID PRICES OF THE TRAFFIC CONTROL AND PAY ITEMS INCLUDED IN THE CONTRACT. THE TEMPORARY SIGNS, BARRICADES, AND DRUMS WILL REMAIN THE PROPERTY OF THE CONTRACTOR. TEMPORARY PAVEMENT STRIPING SHALL BE PAID FOR SEPARATELY.

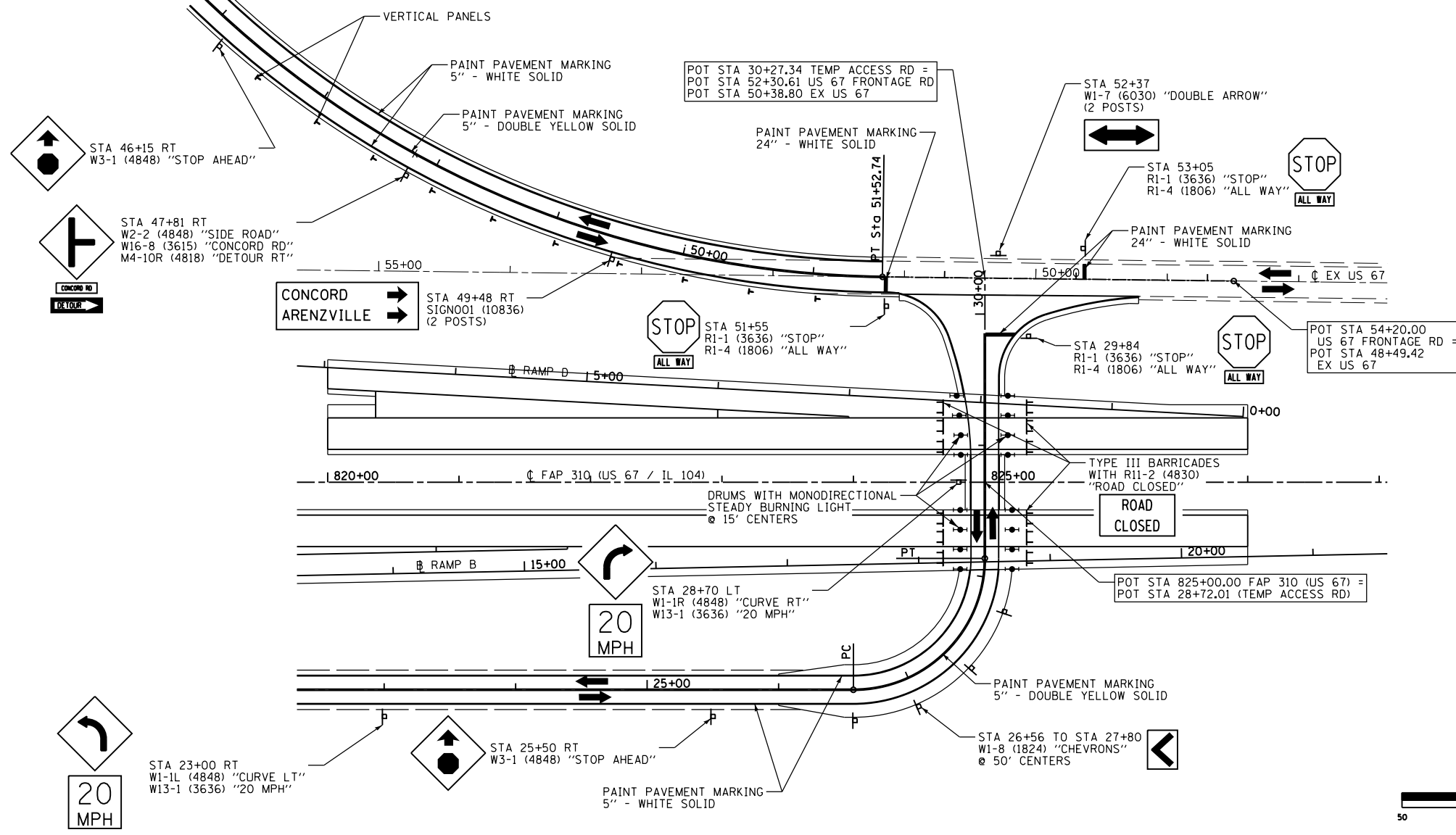
DETAIL "B" - PAVEMENT CLOSURE

NOT TO SCALE



TRAFFIC CONTROL SET UP FOR DETAIL "B" WILL NOT BE MEASURED AND PAID FOR SEPARATELY. THE COST WILL BE CONSIDERED TO BE INCLUDED IN THE CONTRACT UNIT BID PRICES OF THE TRAFFIC CONTROL AND PAY ITEMS INCLUDED IN THE CONTRACT. THE TEMPORARY SIGNS, BARRICADES, AND DRUMS WILL REMAIN THE PROPERTY OF THE CONTRACTOR. TEMPORARY PAVEMENT STRIPING SHALL BE PAID FOR SEPARATELY.

DETAIL "C" - TEMPORARY ACCESS RD & EX US 67 INTERSECTION



**TRAFFIC CONTROL & PROTECTION SCHEDULE
STAGE 2 - DETAIL "C"**

ITEM CODE	DESCRIPTION	UNIT	QUANTITY**
•	BARRICADES, TYPE II / DRUMS	EACH	16
•	BARRICADES, TYPE III (WITH R11-2)	EACH	12
•	SIGN PANEL, TY 1 (M4-10R)	EACH	1
•	SIGN PANEL, TY 1 (R1-1)	EACH	3
•	SIGN PANEL, TY 1 (R1-4)	EACH	3
•	SIGN PANEL, TY 1 (W16-8)	EACH	1
•	SIGN PANEL, TY 2 (W1-1R)	EACH	1
•	SIGN PANEL, TY 2 (W13-1)	EACH	1
•	SIGN PANEL, TY 2 (W1-7)	EACH	1
•	SIGN PANEL, TY 2 (W1-8)	EACH	4
•	SIGN PANEL, TY 2 (W2-2)	EACH	1
•	SIGN PANEL, TY 2 (W3-1)	EACH	2
•	SIGN PANEL, TY 3 (SIGN001)	EACH	1
•	WOOD POSTS, 4 x 4	EACH	15

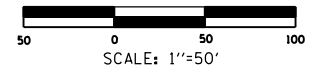
- ITEM WILL NOT BE MEASURED AND PAID FOR SEPERATELY. THE COST WILL BE INCLUDED IN THE CONTRACT UNIT BID PRICES OF THE TRAFFIC CONTROL PAY ITEMS IN THE CONTRACT.
- ** - QUANTITY MAY BE ADJUSTED ACCORDING TO SITE CONDITIONS AND AS DIRECTED BY THE ENGINEER.

SEE SHEET 125 FOR STAGE CONSTRUCTION PAVEMENT MARKING SCHEDULE

REVISIONS	
NAME	DATE

ILLINOIS DEPARTMENT OF TRANSPORTATION
**TRAFFIC CONTROL AND STAGING
 DETAILS**
 FAP 310 (US 67/IL 104)
 SHEET 22 OF 27

DATE 7/09
 DRAWN BY SEB
 CHECKED BY



\$FILE\$