

F.A.P. RTE.	SECTION	COUNTY	TOTAL SHEETS	SHEET NO.
310	69-3(3HB)	MORGAN	793	132

PROP. CURVE PD01
 PI STA. = 101+05.21
 $\Delta = 72^\circ 48' 48''$ (RT)
 $D = 93^\circ 55' 39''$
 $R = 61.00'$
 $T = 44.98'$
 $L = 77.52'$
 $E = 14.79'$
 $e = NC$
 P.C. STA. = 100+60.23
 P.T. STA. = 101+37.75

PROP. CURVE PD02
 PI STA. = 103+53.59
 $\Delta = 82^\circ 49' 52''$ (LT)
 $D = 93^\circ 55' 39''$
 $R = 61.00'$
 $T = 53.81'$
 $L = 88.19'$
 $E = 20.34'$
 $e = NC$
 P.C. STA. = 102+99.78
 P.T. STA. = 103+87.97

11 STA. 581+02.0 SKEW = 9° RT AH (SERVICE DRIVE 81)
 PRECAST REINF CONC END SECTION, 24" \emptyset STD (542301)
 PIPE CULVERT, CLASS A, TYPE 2, 24" \emptyset , 116'
 PRECAST REINF CONC END SECTION, 24" \emptyset STD (542301)
 USFL STA. 581+10.9, 56.0' LT, EL 610.80
 DSFL STA. 580+92.7, 58.7' RT, EL 610.22
 TRENCH BACKFILL = 22.6 CU YD

10 STA. 18+50 29' RT (EXISTING US 67)
 PIPE CULVERT, CLASS D, TYPE 1 -18" \emptyset ERS - x 76'
 METAL END SECTION (STD. 542406) - 2 EACH
 USFL 614.67 - STA. 18+12.0, 28.4' RT
 DSFL 614.39 - STA. 18+88.0, 29.4' RT
 TRENCH BACKFILL = 8.4 CU YD

EXIST. CURVE 305
 PI STA. = 30+75.44
 $\Delta = 5^\circ 32' 52''$ (RT)
 $D = 0^\circ 32' 47''$
 $R = 10,484.88'$
 $T = 508.00'$
 $L = 1,015.20'$
 $E = 12.30'$
 P.C. STA. = 25+67.44
 P.T. STA. = 35+82.64

EXIST. CURVE 304
 PI STA. = 21+00.03
 $\Delta = 4^\circ 36' 00''$ (LT)
 $D = 0^\circ 30' 13''$
 $R = 11,375.65'$
 $T = 456.90'$
 $L = 913.30'$
 $E = 9.17'$
 P.C. STA. = 16+43.14
 P.T. STA. = 25+56.44

ROBERTA WERRIES
 PARCEL NO. 6084110

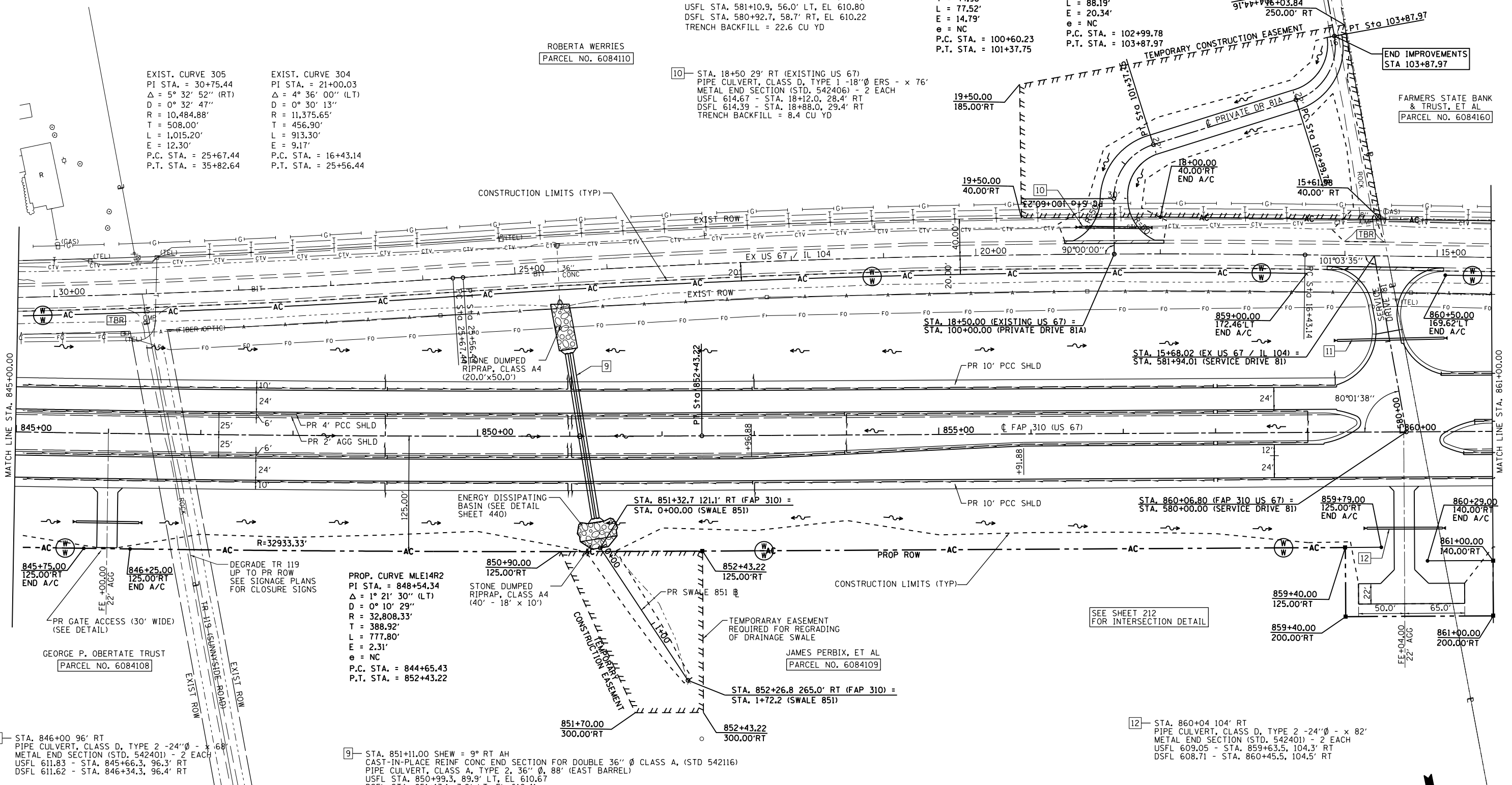
FARMERS STATE BANK & TRUST, ET AL
 PARCEL NO. 6084160

1:12:56 PM

Mar-29-2011 01:12:56PM

MATCH LINE STA. 845+00.00

MATCH LINE STA. 861+00.00

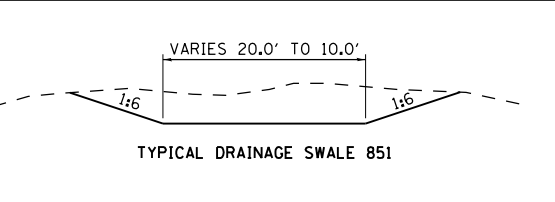


9A STA. 846+00 96' RT
 PIPE CULVERT, CLASS D, TYPE 2 -24" \emptyset - x 68'
 METAL END SECTION (STD. 542401) - 2 EACH
 USFL 611.83 - STA. 845+66.3, 96.3' RT
 DSFL 611.62 - STA. 846+34.3, 96.4' RT

PROP. CURVE MLE14R2
 PI STA. = 848+54.34
 $\Delta = 1^\circ 21' 30''$ (LT)
 $D = 0^\circ 10' 29''$
 $R = 32,808.33'$
 $T = 388.92'$
 $L = 777.80'$
 $E = 2.31'$
 $e = NC$
 P.C. STA. = 844+65.43
 P.T. STA. = 852+43.22

850+90.00 125.00' RT
 852+43.22 125.00' RT
 STONE DUMPED RIPRAP, CLASS A4 (40' - 18' x 10')

12 STA. 860+04 104' RT
 PIPE CULVERT, CLASS D, TYPE 2 -24" \emptyset - x 82'
 METAL END SECTION (STD. 542401) - 2 EACH
 USFL 609.05 - STA. 859+63.5, 104.3' RT
 DSFL 608.71 - STA. 860+45.5, 104.5' RT



\$FILE\$