

| F.A.P. RTE. | SECTION | COUNTY | TOTAL SHEETS | SHEET NO. |
|---------------------|-----------|---------------------------|--------------|-----------|
| 310 | 69-3(3HB) | MORGAN | 793 | 134 |
| STA. | | TO STA. | | |
| FED. ROAD DIST. NO. | | ILLINOIS FED. AID PROJECT | | |

SEC 2, T 15 N, R 12 W, 3rd PM

BM PC #10
 STA 866+08 @ 148' LT
 CHISLED SQUARE IN NORTH HDWL
 EL = 606.088

15— STA. 1+87 29' RT (US 67 FRONTAGE ROAD)
 PIPE CULVERT, CLASS D, TYPE 1 - 18"Ø ERS - x 42'
 METAL END SECTION (STD. 542406) - 2 EACH
 USFL 613.60 - STA. 1+67.0, 29.4' RT
 DSFL 613.09 - STA. 2+09.0, 29.0' RT

13— STA. 866+07.00
 PRECAST REINF CONC END SECTION 60" Ø, STD (542301) - 2 EACH
 PIPE CULVERT, CLASS A, TYPE 2, 60" Ø, 84'
 USFL STA. 866+07.0, 87.1' LT, EL 601.92
 DSFL STA. 866+07.0, 3.1' LT, EL 601.58
 REINF CONC PIPE TEE, 60" PIPE W 36" RISER W MEDIAN INLET STD (604106)
 STA. 866+07.0, 0.0' RT, TG EL 608.73
 PIPE CULVERT, CLASS A, TYPE 2, 60" Ø, 86'
 USFL STA. 866+07.0, 2.9' RT, EL 601.56
 DSFL STA. 866+07.0, 88.9' RT, EL 601.21
 D.A.=82.1 ACRES 050=114 CFS 0100=135 CFS
 TRENCH BACKFILL = 69.0 CU YD

14— STA. 866+07.0 LT
 CONCRETE COLLAR - SEE DETAIL ON SHEET 434
 PRECAST CONCRETE BOX CULVERT 3'x3', 4'
 BOX CULVERT END SECTION NO. 1 - 1 EACH
 USFL 601.99 - STA. 866+07.0, 147.8' LT
 DSFL 601.99 - STA. 866+07.0, 143.8' LT

BEGIN IMPROVEMENTS
 US 67 FRONTAGE RD
 STA. 3+00.00 (EX US 67/IL 104)

870+00.00 (5+40.66)
 END WOVEN WIRE
 BEGIN CHAIN LINK

FARMERS STATE BANK & TRUST, ET AL
 PARCEL NO. 6084160

FARMERS STATE BANK & TRUST, ET AL
 PARCEL NO. 6084111

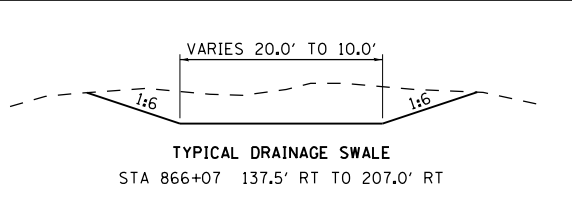
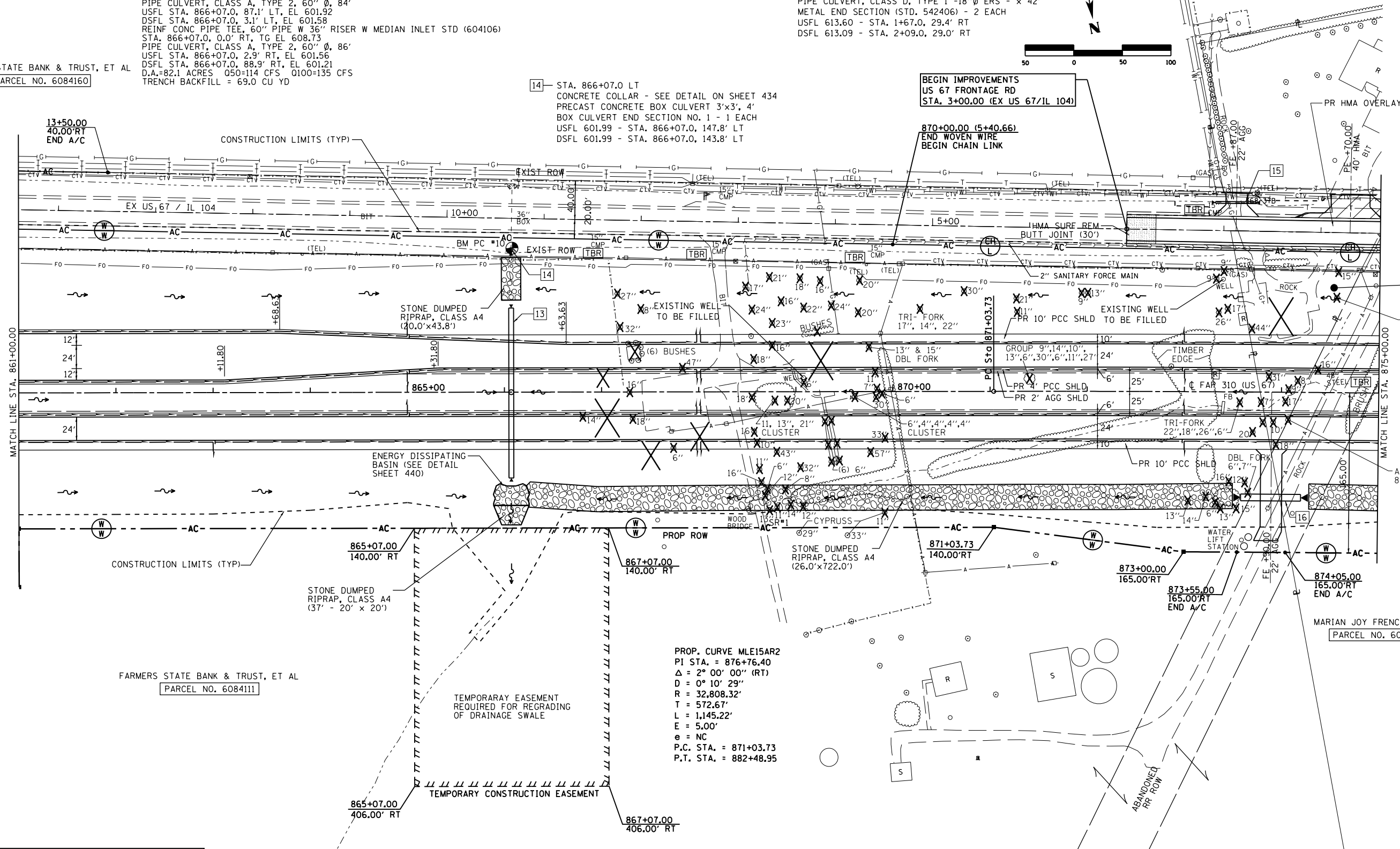
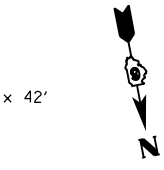
MARIAN JOY FRENCH BECKER
 PARCEL NO. 6084115

HAROLD & PATRICIA L. BOLDT
 PARCEL NO. 6084112

PROP. CURVE MLE15AR2
 PI STA. = 876+76.40
 $\Delta = 2^\circ 00' 00''$ (RT)
 $D = 0^\circ 10' 29''$
 $R = 32,808.32'$
 $T = 572.67'$
 $L = 1,145.22'$
 $E = 5.00'$
 $e = NC$
 P.C. STA. = 871+03.73
 P.T. STA. = 882+48.95

TEMPORARY EASEMENT
 REQUIRED FOR REGRADING
 OF DRAINAGE SWALE

TEMPORARY CONSTRUCTION EASEMENT



1:13:08 PM
 Mar-29-2011 01:13:08 PM
 \$FILE\$

SEC 2, T 15 N, R 12 W, 3rd PM