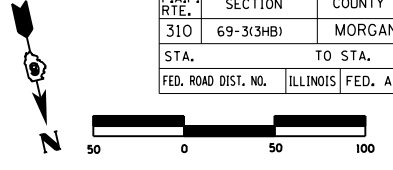


F.A.P. RTE.	SECTION	COUNTY	TOTAL SHEETS	SHEET NO.
310	69-3(3HB)	MORGAN	793	136
STA.		TO STA.		
FED. ROAD DIST. NO.		ILLINOIS	FED. AID PROJECT	



1:13:19 PM

Mar-29-2011 01:13:19PM

17- STA. 877+21.00  
 PRECAST REINF CONC END SECTION 72" Ø, STD (542301) - 2 EACH  
 PIPE CULVERT, CLASS A, TYPE 2, 72" Ø, 80'  
 USFL STA. 877+21.0, 83.1' LT, EL 604.90  
 DSFL STA. 877+21.0, 3.1' LT, EL 604.43  
 REINF CONC PIPE TEE, 72" PIPE W 36" RISER W MEDIAN INLET STD (604106)  
 STA. 877+21.0, 0.0' RT, TG EL 612.07  
 PIPE CULVERT, CLASS A, TYPE 2, 72" Ø, 80'  
 USFL STA. 877+21.0, 2.9' RT, EL 604.39  
 DSFL STA. 877+21.0, 82.9' RT, EL 603.92  
 D.A.=200.6 Q50=214 CFS Q100=252 CFS  
 TRENCH BACKFILL = 84.1 CU YD

BM TB #4  
 STA 884+40 @ 226' LT  
 CHISLED "+" IN NW BOLT OF SIGN  
 EL = 621.280

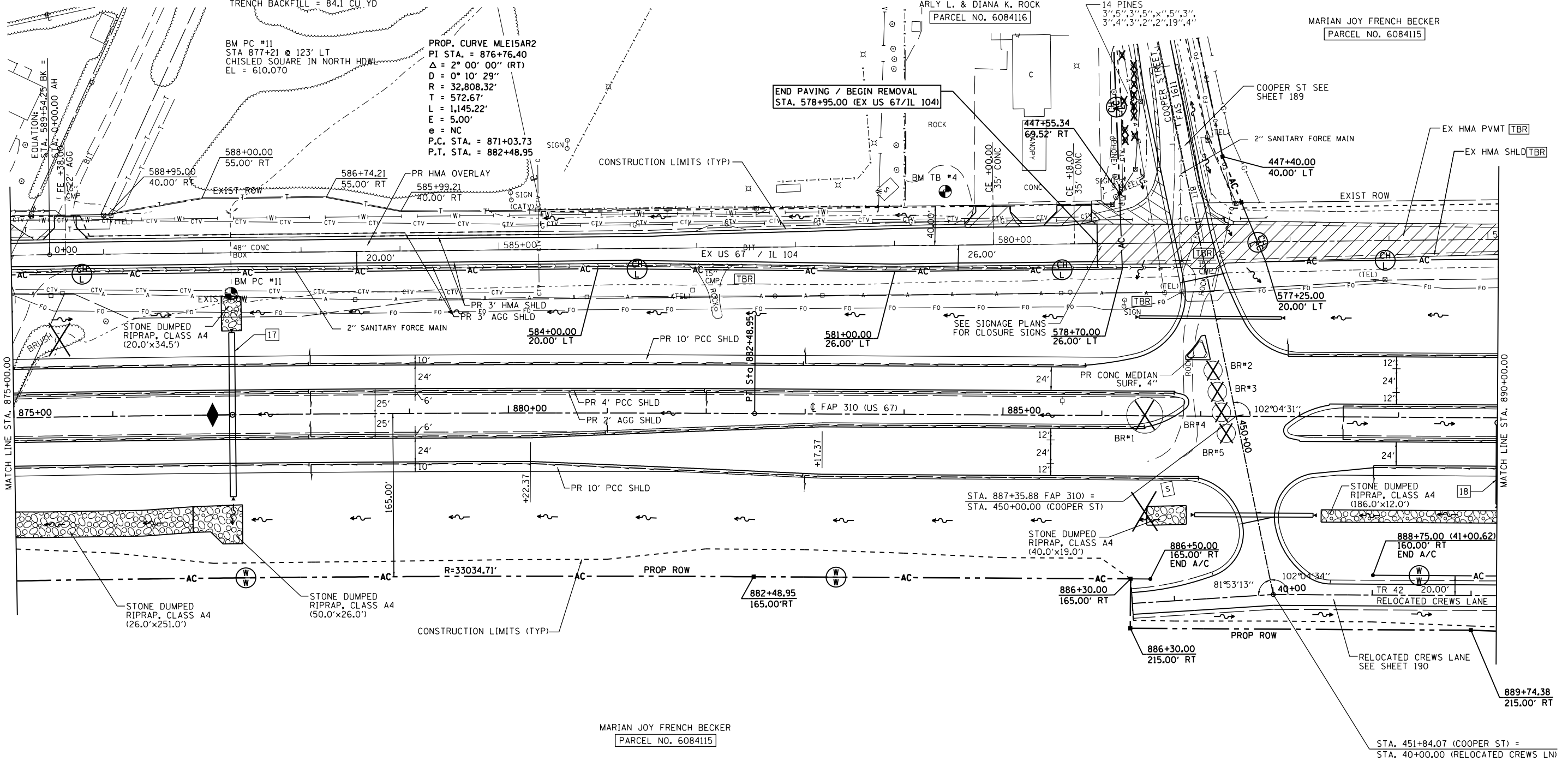
PROP. CURVE MLE15AR2  
 PI STA. = 876+76.40  
 $\Delta = 2^\circ 00' 00''$  (RT)  
 $D = 0^\circ 10' 29''$   
 $R = 32,808.32'$   
 $T = 572.67'$   
 $L = 1,145.22'$   
 $E = 5.00'$   
 $e = NC$   
 P.C. STA. = 871+03.73  
 P.T. STA. = 882+48.95

BM PC #11  
 STA 877+21 @ 123' LT  
 CHISLED SQUARE IN NORTH HDWL  
 EL = 610.070

ANDY S. & STACEY R. ROCK  
 ARLY L. & DIANA K. ROCK  
 PARCEL NO. 6084116

MARIAN JOY FRENCH BECKER  
 PARCEL NO. 6084115

END PAVING / BEGIN REMOVAL  
 STA. 578+95.00 (EX US 67/IL 104)



STONE DUMPED RIPRAP, CLASS A4 (20.0'x34.5')

STONE DUMPED RIPRAP, CLASS A4 (26.0'x251.0')

STONE DUMPED RIPRAP, CLASS A4 (50.0'x26.0')

STA. 887+35.88 FAP 310) =  
 STA. 450+00.00 (COOPER ST)

STONE DUMPED RIPRAP, CLASS A4 (40.0'x19.0')

886+50.00  
 165.00' RT  
 END A/C

STONE DUMPED RIPRAP, CLASS A4 (186.0'x12.0')

888+75.00 (41+00.62)  
 160.00' RT  
 END A/C

STA. 451+84.07 (COOPER ST) =  
 STA. 40+00.00 (RELOCATED CREWS LN)

18- STA. 890+00.00 RT  
 MANHOLE TYPE A, 5'Ø W MEDIAN INLET STD (604106) FLAT SLAB TOP  
 STA. 890+00.0, 5.0' RT, EL 615.80  
 PIPE CULVERT, CLASS A, TYPE 2, 24" Ø, 80'  
 USFL STA. 890+00.0, 7.5' RT, EL 611.19  
 DSFL STA. 890+00.0, 87.5' RT, EL 610.71  
 PRECAST REINF CONC END SECTION 24" Ø, STD (542301)  
 TRENCH BACKFILL = 31.2 CU YD

SEE SHEET 213 FOR INTERSECTION DETAIL

MARIAN JOY FRENCH BECKER  
 PARCEL NO. 6084115