

F.A.P. RTE.	SECTION	COUNTY	TOTAL SHEETS	SHEET NO.
310	69-3(3HB)	MORGAN	793	138

STA. TO STA.  
ILLINOIS FED. AID PROJECT

BM PC #14  
STA 904+07 @ 220' LT  
CHISLED "4" IN N BOLT OF FH  
EL = 622.881

1:13:31 PM  
Mar-29-2011 01:13:31 PM  
FILE\$

19- STA. 573+32 29' RT  
PIPE CULVERT, CLASS D, TYPE 1, 18"Ø ERS, 44'  
METAL END SECTION STD (542406) - 2 EACH  
USFL 616.84 - STA. 573+53.4, 27.7' RT  
DSFL 616.33 - STA. 573+09.4, 29.3' RT

21- STA. 901+60.00 LT  
MANHOLE TYPE A, 5'Ø W MEDIAN INLET STD (604106) FLAT SLAB TOP  
PIPE CULVERT, CLASS A, TYPE 2, 24" Ø, 80'  
PRECAST REINF CONC END SECTION 24" Ø, STD (542301)  
USFL STA. 901+60.0, 2.5' LT, EL 615.56  
DSFL STA. 900+05.0, 82.5' LT, EL 615.02  
INLET STA. 900+05.0, 0.0' LT, TG EL 619.39  
TRENCH BACKFILL = 23.7 CU YD

22- STA. 901+60.00 (563+50.75 US 67 FRONTAGE RD)  
PRECAST REINF CONC END SECTION, 24"Ø, STD (542301)  
PIPE CULVERT, CLASS A, TYPE 1, 24", 58'  
PRECAST REINF CONC END SECTION, 24"Ø, STD (542301)  
USFL 616.59 - STA. 901+60.00, 191.6' LT  
DSFL 615.61 - STA. 901+60.00, 133.6' LT  
TRENCH BACKFILL = 9.9 CU YD

EXIST. CURVE 231  
PI STA. = 562+11.91  
Δ = 14° 45' 34" (RT)  
D = 1° 29' 57"  
R = 3,821.89'  
T = 495.00'  
L = 984.52'  
E = 31.92'  
P.C. STA. = 557+16.91  
P.T. STA. = 567+01.43

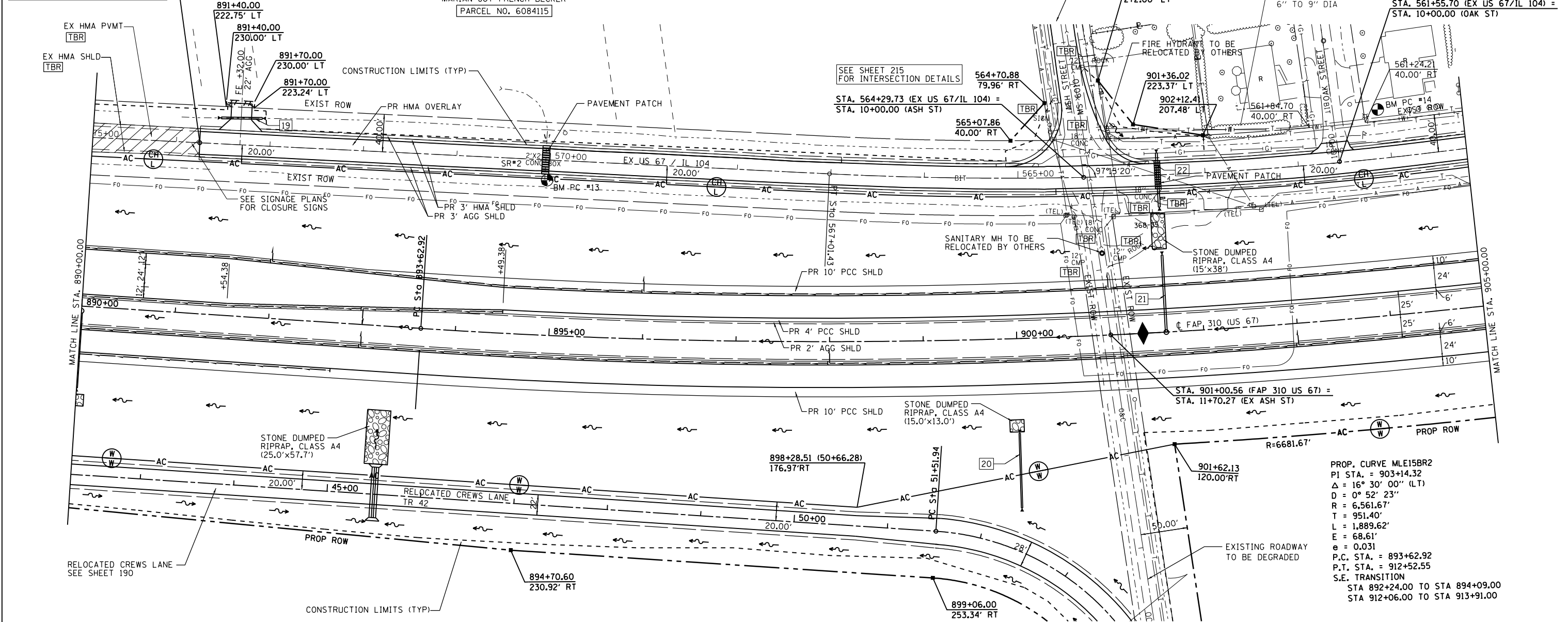
BM PC #13  
STA 894+88 @ 166' LT  
CHISLED SQUARE IN NORTH PIPE CULV  
EL = 618.787

JOHN C. & DIXIE L. WILLIAMS  
PARCEL NO. 6084152

MARIAN JOY FRENCH BECKER  
PARCEL NO. 6084115

STA. 561+55.70 (EX US 67/IL 104) =  
STA. 10+00.00 (OAK ST)

END REMOVAL / BEGIN PAVING  
STA. 573+75.00 (EX US 67/IL 104)



PROP. CURVE MLE15BR2  
PI STA. = 903+14.32  
Δ = 16° 30' 00" (LT)  
D = 0° 52' 23"  
R = 6,561.67'  
T = 951.40'  
L = 1,889.62'  
E = 68.61'  
e = 0.031  
P.C. STA. = 893+62.92  
P.T. STA. = 912+52.55  
S.E. TRANSITION  
STA 892+24.00 TO STA 894+09.00  
STA 912+06.00 TO STA 913+91.00

20- STA. 900+00 RT  
PIPE CULVERT, CLASS D, TYPE 1, 18"Ø, 80'  
METAL END SECTION STD (542406) - 2 EACH  
USFL 617.12 - STA. 900+00.0, 181.0' RT  
DSFL 616.01 - STA. 900+00.0, 101.0' RT

MARIAN JOY FRENCH BECKER  
PARCEL NO. 6084115

