

F.A.P. RTE.	SECTION	COUNTY	TOTAL SHEETS	SHEET NO.
310	69-3(3HB)	MORGAN	793	139
STA.		TO STA.		
FED. ROAD DIST. NO.	ILLINOIS	FED. AID	PROJECT	

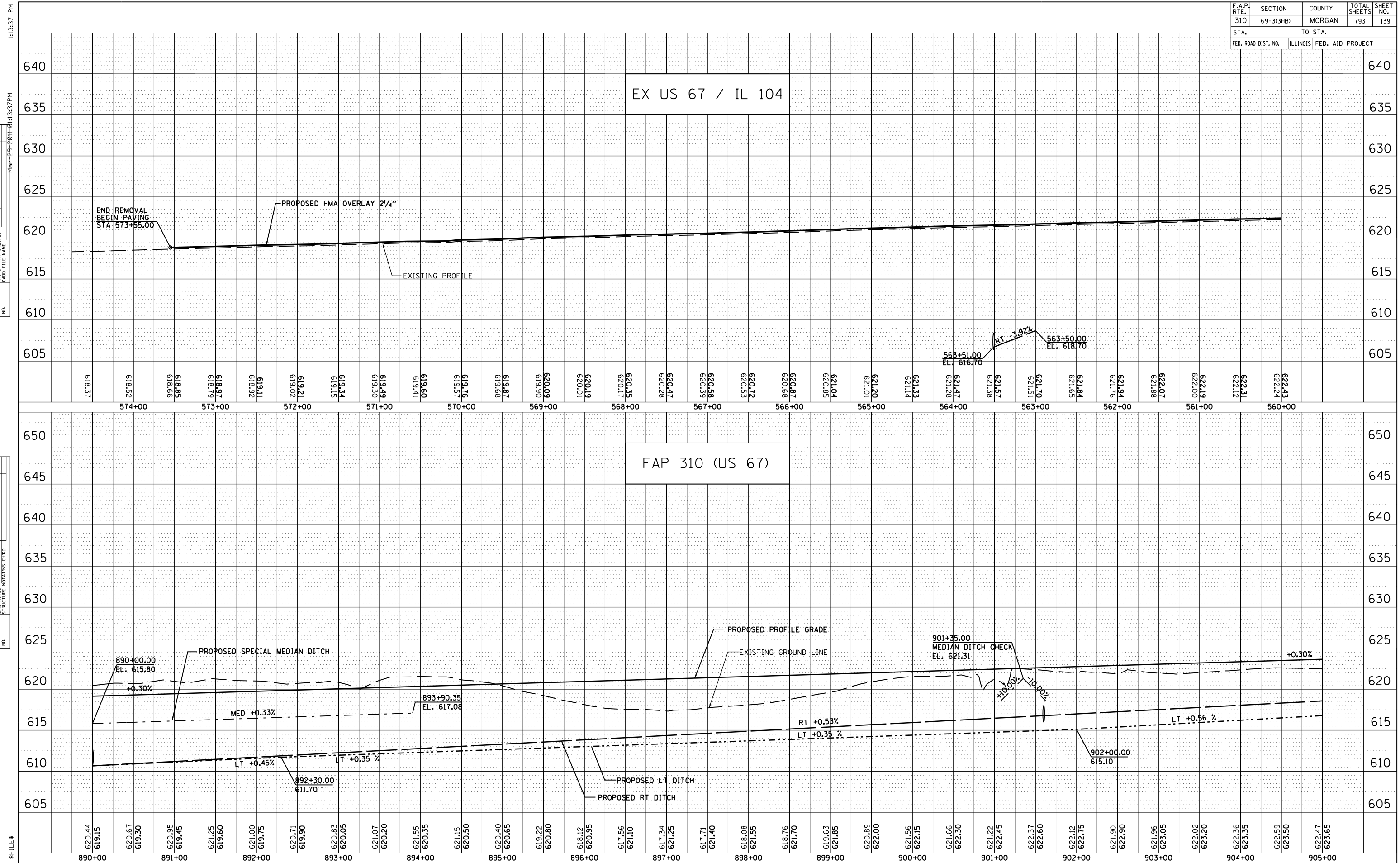
1:13:37 PM

PLAN	SURVEYED	DATE
NO.	BY	

1:13:37 PM

PROFILE	SURVEYED	DATE
NO.	BY	

\$/FILE \$



EX US 67 / IL 104

FAP 310 (US 67)

SECTION 69-3(3HB)

MORGAN COUNTY