

F.A.P. RTE.	SECTION	COUNTY	TOTAL SHEETS	SHEET NO.
310	69-3(3HB)	MORGAN	793	140
STA.		TO STA.		
FED. ROAD DIST. NO.		ILLINOIS	FED. AID PROJECT	

1:13:43 PM

Mar-29-2011 01:13:43PM

\$FILE\$

SEC 2, T 15 N, R 12 W, 3rd PM

SEC 3, T 15 N, R 12 W, 3rd PM

PROP. CURVE MLE15BR2
 PI STA. = 903+14.32
 $\Delta = 16^\circ 30' 00''$ (LT)
 $D = 0^\circ 52' 23''$
 $R = 6,561.67'$
 $T = 951.40'$
 $L = 1,889.62'$
 $E = 68.61'$
 $e = 0.031$
 P.C. STA. = 893+62.92
 P.T. STA. = 912+52.55
 S.E. TRANSITION

EXIST. CURVE 231
 PI STA. = 562+11.91
 $\Delta = 14^\circ 45' 34''$ (RT)
 $D = 1^\circ 29' 57''$
 $R = 3,821.89'$
 $T = 495.00'$
 $L = 984.52'$
 $E = 31.92'$
 P.C. STA. = 557+16.91
 P.T. STA. = 567+01.43

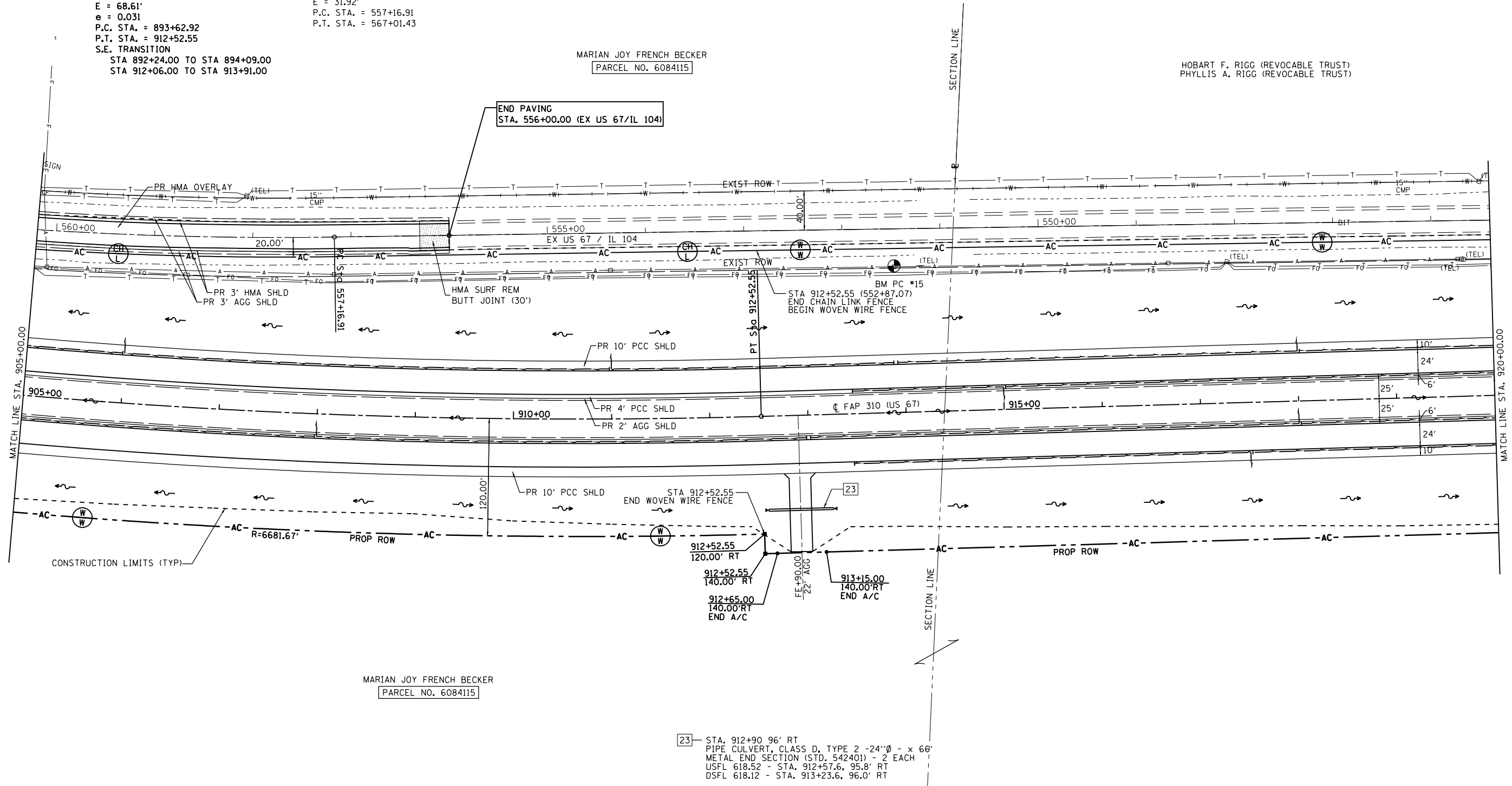
BM PC #13
 STA 913+92 @ 149' LT
 60d NAIL IN POWER POLE
 EL = 625.714

STA 892+24.00 TO STA 894+09.00
 STA 912+06.00 TO STA 913+91.00

MARIAN JOY FRENCH BECKER
 PARCEL NO. 6084115

HOBART F. RIGG (REVOCABLE TRUST)
 PHYLLIS A. RIGG (REVOCABLE TRUST)

END PAVING
 STA. 556+00.00 (EX US 67/IL 104)



MARIAN JOY FRENCH BECKER
 PARCEL NO. 6084115

23 - STA. 912+90.96' RT
 PIPE CULVERT, CLASS D, TYPE 2 - 24"Ø - x 66'
 METAL END SECTION (STD. 542401) - 2 EACH
 USFL 618.52 - STA. 912+57.6, 95.8' RT
 DSFL 618.12 - STA. 913+23.6, 96.0' RT

SEC 2, T 15 N, R 12 W, 3rd PM

SEC 3, T 15 N, R 12 W, 3rd PM

SECTION 69-3(3HB)

MORGAN COUNTY

