

F.A.P. RTE.	SECTION	COUNTY	TOTAL SHEETS	SHEET NO.
310	69-3(3HB)	MORGAN	793	142
STA.	TO STA.			
FED. ROAD DIST. NO.	ILLINOIS	FED. AID PROJECT		



1:13:56 PM

Mar-29-2011 01:13:56PM

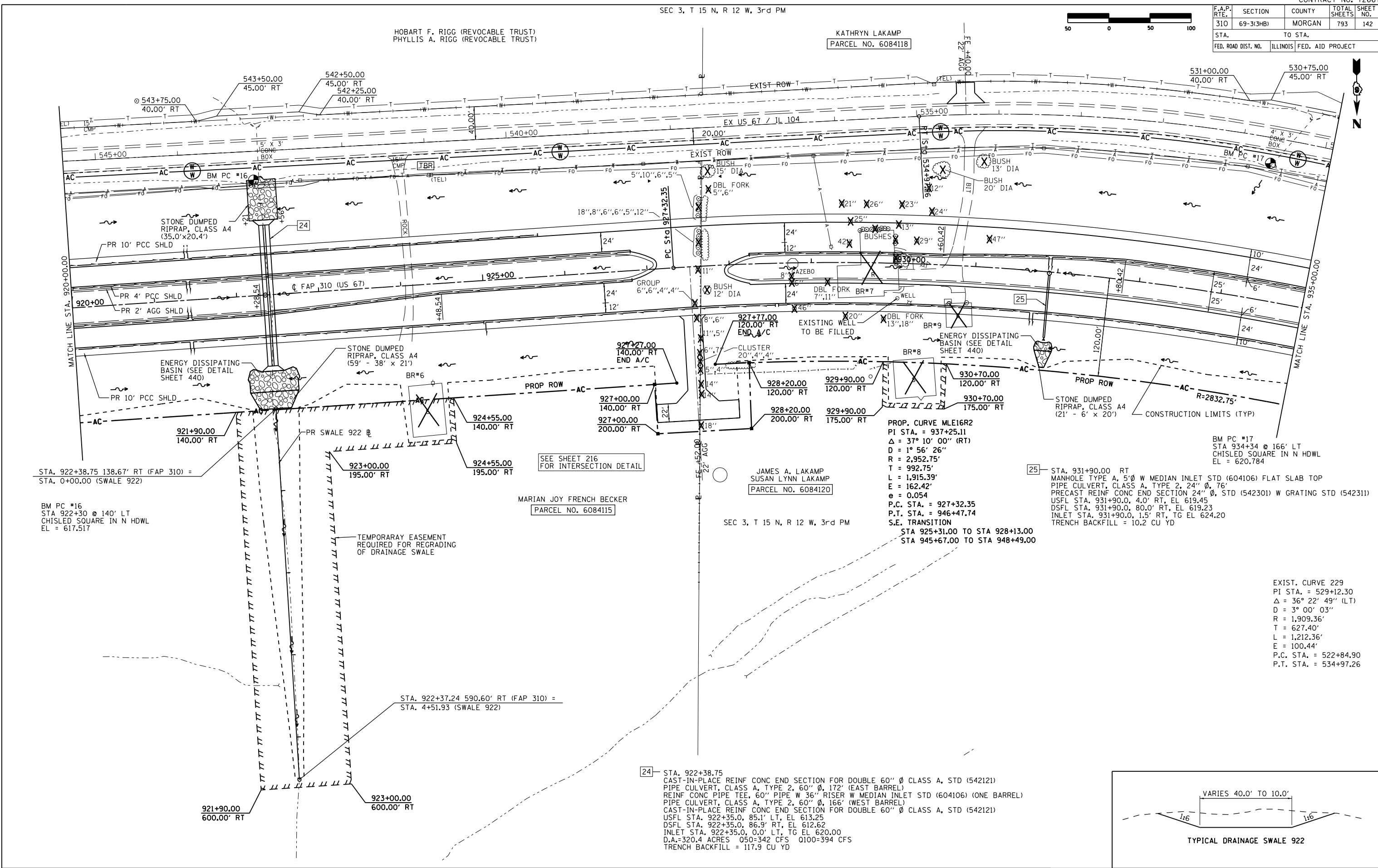
\$FILE\$

HOBART F. RIGG (REVOCABLE TRUST)
 PHYLLIS A. RIGG (REVOCABLE TRUST)

KATHRYN LAKAMP
 PARCEL NO. 6084118

MARIAN JOY FRENCH BECKER
 PARCEL NO. 6084115

JAMES A. LAKAMP
 SUSAN LYNN LAKAMP
 PARCEL NO. 6084120



STA. 922+38.75 138.67' RT (FAP 310) =
 STA. 0+00.00 (SWALE 922)

BM PC #16
 STA 922+30 @ 140' LT
 CHISLED SQUARE IN N HDWL
 EL = 617.517

TEMPORARY EASEMENT
 REQUIRED FOR REGRADING
 OF DRAINAGE SWALE

STA. 922+37.24 590.60' RT (FAP 310) =
 STA. 4+51.93 (SWALE 922)

SEE SHEET 216
 FOR INTERSECTION DETAIL

PROP. CURVE MLE16R2
 PI STA. = 937+25.11
 $\Delta = 37^\circ 10' 00''$ (RT)
 $D = 1^\circ 56' 26''$
 $R = 2,952.75'$
 $T = 992.75'$
 $L = 1,915.39'$
 $E = 162.42'$
 $e = 0.054$
 P.C. STA. = 927+32.35
 P.T. STA. = 946+47.74
 S.E. TRANSITION

STA 925+31.00 TO STA 928+13.00
 STA 945+67.00 TO STA 948+49.00

EXIST. CURVE 229
 PI STA. = 529+12.30
 $\Delta = 36^\circ 22' 49''$ (LT)
 $D = 3^\circ 00' 03''$
 $R = 1,909.36'$
 $T = 627.40'$
 $L = 1,212.36'$
 $E = 100.44'$
 P.C. STA. = 522+84.90
 P.T. STA. = 534+97.26

24 STA. 922+38.75
 CAST-IN-PLACE REINF CONC END SECTION FOR DOUBLE 60" \emptyset CLASS A, STD (542121)
 PIPE CULVERT, CLASS A, TYPE 2, 60" \emptyset , 172' (EAST BARREL)
 REINF CONC PIPE TEE, 60" PIPE W 36" RISER W MEDIAN INLET STD (604106) (ONE BARREL)
 PIPE CULVERT, CLASS A, TYPE 2, 60" \emptyset , 166' (WEST BARREL)
 CAST-IN-PLACE REINF CONC END SECTION FOR DOUBLE 60" \emptyset CLASS A, STD (542121)
 USFL STA. 922+35.0, 85.1' LT, EL 613.25
 DSFL STA. 922+35.0, 86.9' RT, EL 612.62
 INLET STA. 922+35.0, 0.0' LT, TG EL 620.00
 D.A.=320.4 ACRES Q50-342 CFS Q100-394 CFS
 TRENCH BACKFILL = 117.9 CU YD

