

F.A.P. RTE.	SECTION	COUNTY	TOTAL SHEETS	SHEET NO.
310	69-3(3HB)	MORGAN	793	150
STA. TO STA.		ILLINOIS FED. AID PROJECT		

SEC 4, T 15 N, R 12 W, 3rd PM

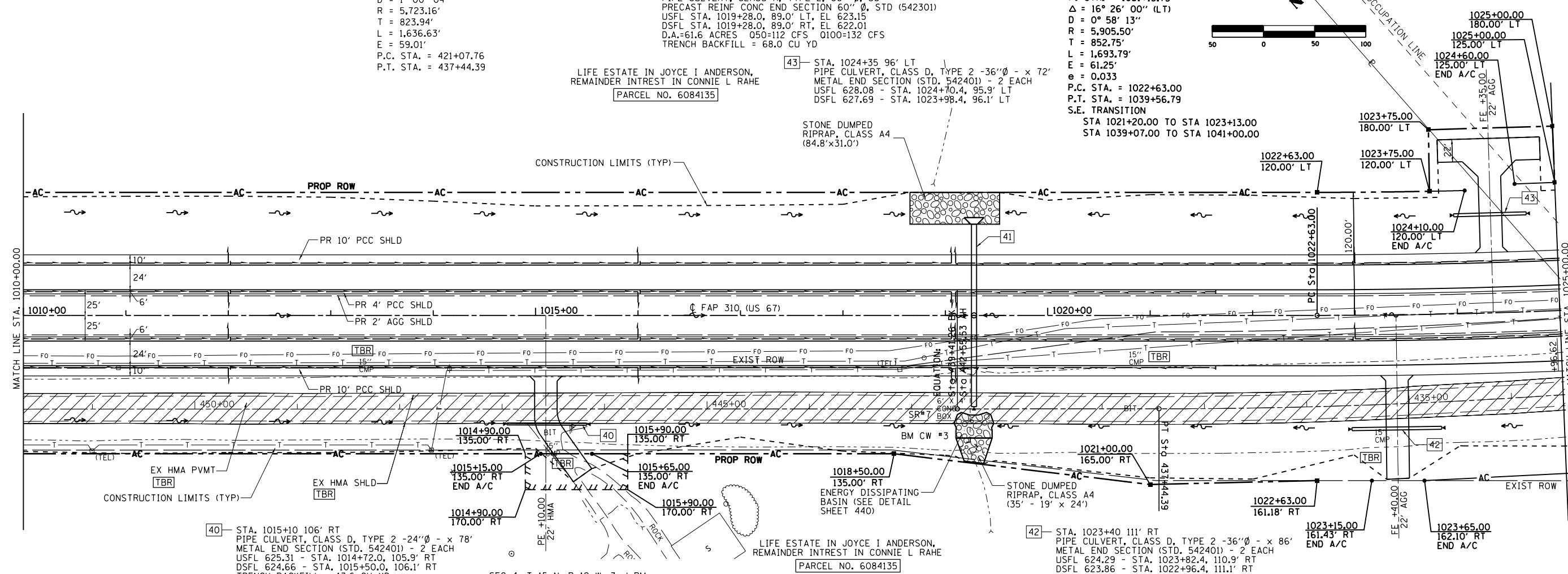
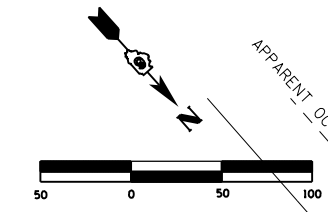
EXIST. CURVE 222
 PI STA. = 429+31.70
 $\Delta = 16^\circ 23' 05''$ (RT)
 $D = 1^\circ 00' 04''$
 $R = 5,723.16'$
 $T = 823.94'$
 $L = 1,636.63'$
 $E = 59.01'$
 P.C. STA. = 421+07.76
 P.T. STA. = 437+44.39

41- STA. 1019+28.00
 6.5' X 5.5' DROP BOX INLET (SEE SHEET 346 FOR CULVERT DETAILS)
 PIPE CULVERT, CLASS A, TYPE 2, 60" ϕ , 86"
 REINF CONC PIPE TEE, 60" PIPE W 36" RISER W MEDIAN INLET STD (604106)
 STA. 1019+28.0, 0.0' RT, TG EL 630.99
 PIPE CULVERT, CLASS A, TYPE 2, 60" ϕ , 86"
 PRECAST REINF CONC END SECTION 60" ϕ , STD (542301)
 USFL STA. 1019+28.0, 89.0' LT, EL 623.15
 DSFL STA. 1019+28.0, 89.0' RT, EL 622.01
 D.A.=61.6 ACRES 050=112 CFS 0100=132 CFS
 TRENCH BACKFILL = 68.0 CU YD

LIFE ESTATE IN JOYCE I ANDERSON,
 REMAINDER INTREST IN CONNIE L RAHE
 [PARCEL NO. 6084135]

43- STA. 1024+35 96' LT
 PIPE CULVERT, CLASS D, TYPE 2 -36" ϕ - x 72"
 METAL END SECTION (STD. 542401) - 2 EACH
 USFL 628.08 - STA. 1024+70.4, 95.9' LT
 DSFL 627.69 - STA. 1023+98.4, 96.1' LT

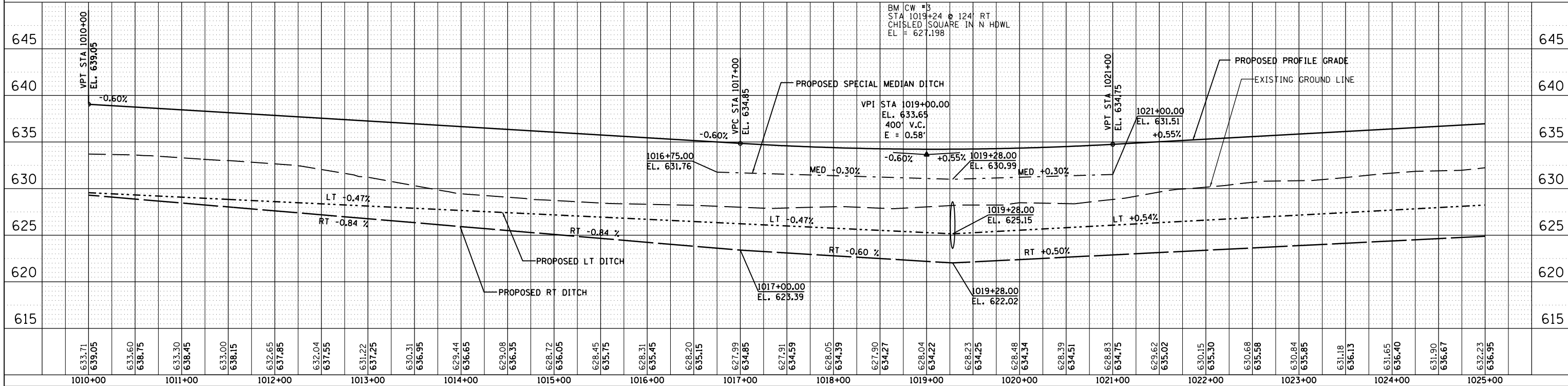
PROP. CURVE MLE18
 PI STA. = 1031+15.75
 $\Delta = 16^\circ 26' 00''$ (LT)
 $D = 0^\circ 58' 13''$
 $R = 5,905.50'$
 $T = 852.75'$
 $L = 1,693.79'$
 $E = 61.25'$
 $e = 0.033$
 P.C. STA. = 1022+63.00
 P.T. STA. = 1039+56.79
 S.E. TRANSITION
 STA 1021+20.00 TO STA 1023+13.00
 STA 1039+07.00 TO STA 1041+00.00



40- STA. 1015+10 106' RT
 PIPE CULVERT, CLASS D, TYPE 2 -24" ϕ - x 78"
 METAL END SECTION (STD. 542401) - 2 EACH
 USFL 625.31 - STA. 1014+72.0, 105.9' RT
 DSFL 624.66 - STA. 1015+50.0, 106.1' RT
 TRENCH BACKFILL = 13.6 CU YD

LIFE ESTATE IN JOYCE I ANDERSON,
 REMAINDER INTREST IN CONNIE L RAHE
 [PARCEL NO. 6084135]

42- STA. 1023+40 111' RT
 PIPE CULVERT, CLASS D, TYPE 2 -36" ϕ - x 86"
 METAL END SECTION (STD. 542401) - 2 EACH
 USFL 624.29 - STA. 1023+82.4, 110.9' RT
 DSFL 623.86 - STA. 1022+96.4, 111.1' RT



PLAN	DATE	BY
SURVEYED		
PLOTTED		
CHECKED		
NO. OF WAY CHECKED		
CADD FILE NAME		

PROFILE	DATE	BY
SURVEYED		
PLOTTED		
CHECKED		
NO. OF WAY CHECKED		
STRUCTURE NOTATIONS CHKD		

1:14:45 PM

1:14:45 PM

\$FILE\$