

1:15:34 PM
Mar-29-2011 01:15:34PM

SEC 33, T 16 N, R 12 W, 3rd PM

SEC 32, T 16 N, R 12 W, 3rd PM

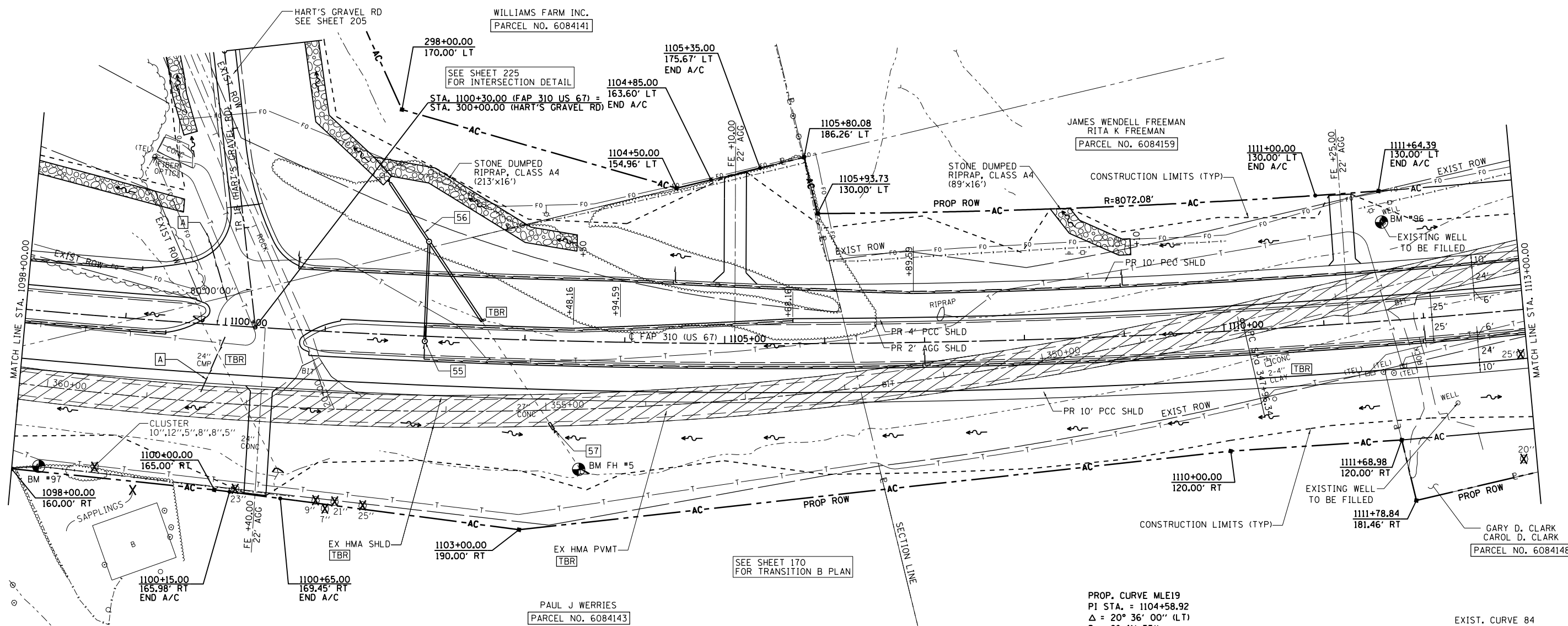
CONTRACT NO. 72667

F.A.P. RTE.	SECTION	COUNTY	TOTAL SHEETS	SHEET NO.
310	69-3(3HB)	MORGAN	793	158
STA.		TO STA.		
FED. ROAD DIST. NO.		ILLINOIS	FED. AID PROJECT	

BM #96
 STA 1111+65 @ 96' LT
 CHISLED SQUARE IN CONC
 FDN OF WELL
 EL = 616.777



A— TRANSVERSE DRAINS, COMPLETE
 (SEE DETAIL)



SEE SHEET 170
 FOR TRANSITION B PLAN

55— STA. 1102+00.00 LT
 MANHOLE TYPE A, 5' Ø W MEDIAN INLET STD (604106) FLAT SLAB TOP
 INLET STA 1102+00.0, 5.0' RT, TG EL = 599.797
 PIPE CULVERT, CLASS A, TYPE 3, 24" Ø, 96'
 USFL STA. 1102+00.0, 2.5' RT, EL 589.50
 DSFL STA. 1102+00.0, 92.2' LT, EL 588.55
 TRENCH BACKFILL = 14.5 CU YD

56— STA. 1102+68.70 SKEW 35° RT AH
 CONCRETE COLLAR (SEE DETAIL SHEET 434)
 PIPE CULVERT, CLASS A, TYPE 3, 30" Ø, 94'
 USFL STA 1102+56.5, 17.1' LT, EL 588.70
 DSFL STA 1102+01.9, 92.6' LT, EL 585.88
 TRENCH BACKFILL = 25.4 CU YD
 MANHOLE TYPE A, 5' Ø WITH FRAME AND LID, CLOSED, TYPE 1
 FLAT SLAB TOP RIM EL 594.30
 PIPE CULVERT, CLASS A, TYPE 4, 30" Ø, 68'
 USFL STA. 1101+98.6, 96.7' LT, EL 575.49
 DSFL STA. 1101+57.9, 151.6' LT, EL 572.20
 PRECAST REINF CONC END SECTION 30" Ø, STD (542301)

57— STA. 1102+68.70 SKEW 35° RT AH
 PIPE CULVERT REMOVAL, 55'
 CONCRETE COLLAR (SEE DETAIL SHEET 434)
 PIPE CULVERT, CLASS A, TYPE 1, 30" Ø, 8'
 USFL STA. 1103+31.2, 88.8' RT, EL 595.95
 DSFL STA. 1103+26.7, 82.2' RT, EL 595.51
 PRECAST REINF CONC END SECTION 30" Ø, STD (542301)

PROP. CURVE MLE19
 PI STA. = 1104+58.92
 $\Delta = 20^\circ 36' 00''$ (LT)
 D = 0° 41' 55"
 R = 8,202.08'
 T = 1,490.57'
 L = 2,948.96'
 E = 134.34'
 e = 0.025
 P.C. STA. = 1089+68.35
 P.T. STA. = 1119+17.31
 S.E. TRANSITION
 STA 1088+44.00 TO STA 1090+06.00
 STA 1118+80.00 TO STA 1120+42.00

EXIST. CURVE 84
 PI STA. = 355+35.94
 $\Delta = 24^\circ 16' 39''$ (RT)
 D = 1° 39' 59"
 R = 3,438.56'
 T = 739.60'
 L = 1,457.00'
 E = 78.64'
 P.C. STA. = 347+96.34
 P.T. STA. = 362+53.34

BM #97
 STA 1098+27 @ 155' RT
 TOP CTR CONC ROW MKR
 EL = 603.584

BM FH #5
 STA 1103+58 @ 128' RT
 CHISLED SQUARE IN N HDWL
 EL = 602.458

SEC 33, T 16 N, R 12 W, 3rd PM

SEC 32, T 16 N, R 12 W, 3rd PM

SECTION 69-3(3HB)

MORGAN COUNTY