

F.A.P. RTE.	SECTION	COUNTY	TOTAL SHEETS	SHEET NO.
310	69-3(3HB)	MORGAN	793	160

SEC 32, T 16 N, R 12 W, 3rd PM

PROP. CURVE MLE19
 PI STA. = 1104+58.92
 $\Delta = 20^\circ 36' 00''$ (LT)
 $D = 0^\circ 41' 55''$
 $R = 8,202.08'$
 $T = 1,490.57'$
 $L = 2,948.96'$
 $E = 134.34'$
 $e = 0.025$
 P.C. STA. = 1089+68.35
 P.T. STA. = 1119+17.31
 S.E. TRANSITION
 STA 1088+44.00 TO STA 1090+06.00
 STA 1118+80.00 TO STA 1120+42.00

JAMES WENDELL FREEMAN
 RITA K FREEMAN
 PARCEL NO. 6084159

59- STA. 1120+72.00
 PRECAST REINF CONC END SECTION 24" ϕ , STD (542301) - 2 EACH
 PIPE CULVERT, CLASS A, TYPE 2, 24" ϕ , 88'
 USFL STA. 1120+72.0, 2.5' LT, EL 604.27
 DSFL STA. 1120+72.0, 90.5' LT, EL 603.69
 MANHOLE TYPE A, 5' ϕ W MEDIAN INLET STD (604106) FLAT SLAB TOP
 STA. 1120+72.0, 0.0' RT, INV EL 503.77, TG EL 609.91
 PIPE CULVERT, CLASS A, TYPE 2, 24" ϕ , 76'
 USFL STA. 1120+72.0, 78.5' RT, EL 607.04
 DSFL STA. 1120+72.0, 2.5' RT, EL 606.50
 D.A.=3.1 ACRES 050=13 CFS 0100=15 CFS
 TRENCH BACKFILL = 40.9 CU YD

60- STA. 1125+25.00 LT
 PRECAST REINF CONC END SECTION 24" ϕ , STD (542301)
 PIPE CULVERT, CLASS A, TYPE 2, 24" ϕ , 74'
 MANHOLE TYPE A, 5' ϕ W MEDIAN INLET STD (604106) FLAT SLAB TOP
 STA. 1125+25.0, 5.0' LT, INV EL 604.95, TG EL 609.16
 USFL STA. 1125+25.0, 7.5' LT, EL 605.45
 DSFL STA. 1125+25.0, 81.5' LT, EL 605.02
 TRENCH BACKFILL = 10.2 CU YD

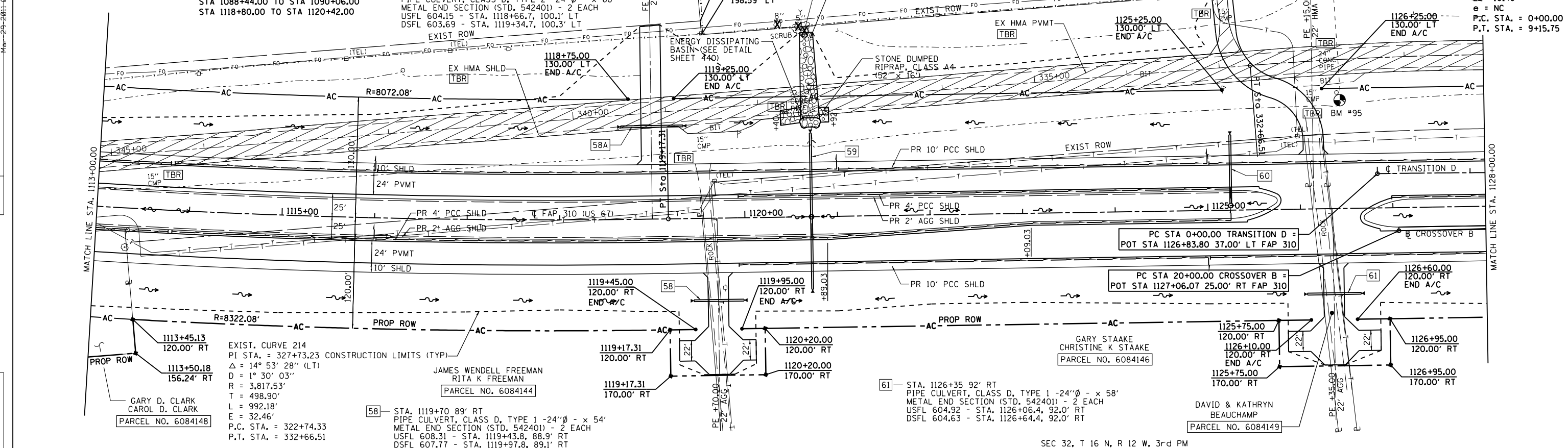
JEFFERY S HILL
 KAROL F HILL
 PARCEL NO. 6084163

PROP. CURVE TRANS
 1127+12.99 PI STA. = 4+58.20
 $\Delta = 5^\circ 14' 49''$ (RT)
 $D = 0^\circ 34' 23''$
 $R = 10,000.00'$
 $L = 458.20'$
 $E = 915.75'$
 $e = 10.49'$
 $e = NC$
 P.C. STA. = 0+00.00
 P.T. STA. = 9+15.75

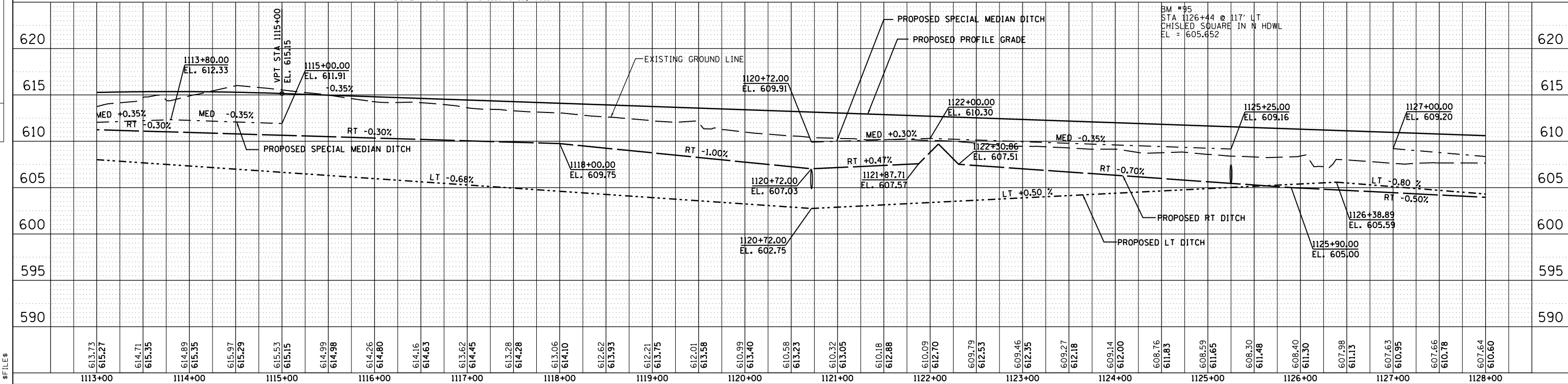


PLAN	DATE	BY
SURVEYED		
PLOTTED		
CHECKED		
DATE		

PROFILE	DATE	BY
SURVEYED		
PLOTTED		
CHECKED		
DATE		



SEC 32, T 16 N, R 12 W, 3rd PM



\$FILES