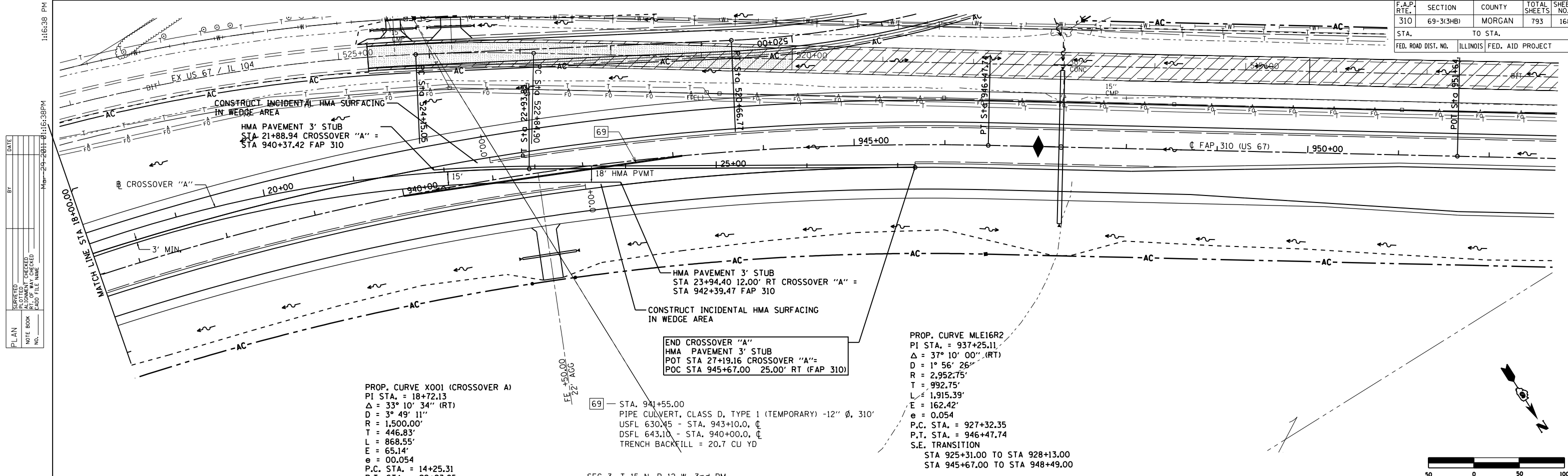


F.A.P. RTE.	SECTION	COUNTY	TOTAL SHEETS	SHEET NO.
310	69-3(3HB)	MORGAN	793	168
STA. 310		TO STA. 310		
FED. ROAD DIST. NO.		ILLINOIS FED. AID PROJECT		



PLAN	DATE
SURVEYED	
PLOTTED	
CHECKED	
BY	
NO. OF WAY CHECKED	
CADD FILE NAME	

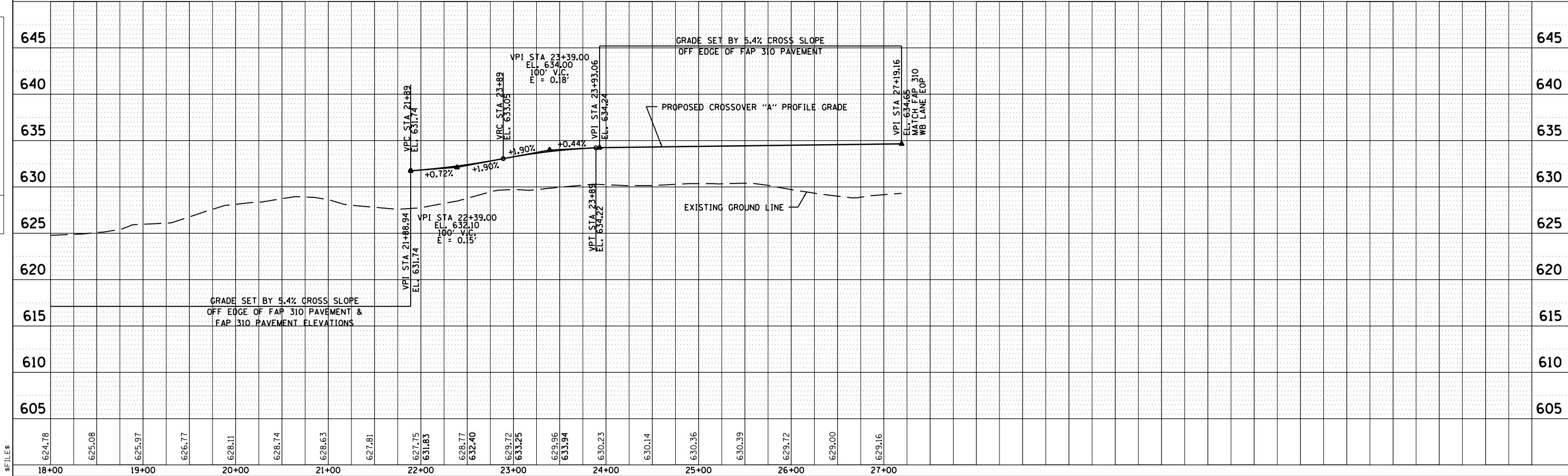
PROFILE	DATE
SURVEYED	
PLOTTED	
CHECKED	
BY	
NOTATION CHKD	

PROP. CURVE X001 (CROSSOVER A)  
 PI STA. = 18+72.13  
 $\Delta = 33^\circ 10' 34''$  (RT)  
 $D = 3^\circ 49' 11''$   
 $R = 1,500.00'$   
 $T = 446.83'$   
 $L = 868.55'$   
 $E = 65.14'$   
 $e = 00.054$   
 P.C. STA. = 14+25.31  
 P.T. STA. = 22+93.85

[69] STA. 941+55.00  
 PIPE CULVERT, CLASS D, TYPE 1 (TEMPORARY) -12"  $\phi$ , 310'  
 USFL 630.45 - STA. 943+10.0,  $\phi$   
 DSFL 643.10 - STA. 940+00.0,  $\phi$   
 TRENCH BACKFILL = 20.7 CU YD

PROP. CURVE MLE16R2  
 PI STA. = 937+25.11  
 $\Delta = 37^\circ 10' 00''$  (RT)  
 $D = 1^\circ 56' 26''$   
 $R = 2,952.75'$   
 $T = 992.75'$   
 $L = 1,915.39'$   
 $E = 162.42'$   
 $e = 0.054$   
 P.C. STA. = 927+32.35  
 P.T. STA. = 946+47.74  
 S.E. TRANSITION  
 STA 925+31.00 TO STA 928+13.00  
 STA 945+67.00 TO STA 948+49.00

SEC 3, T 15 N, R 12 W, 3rd PM



\$FILE\$