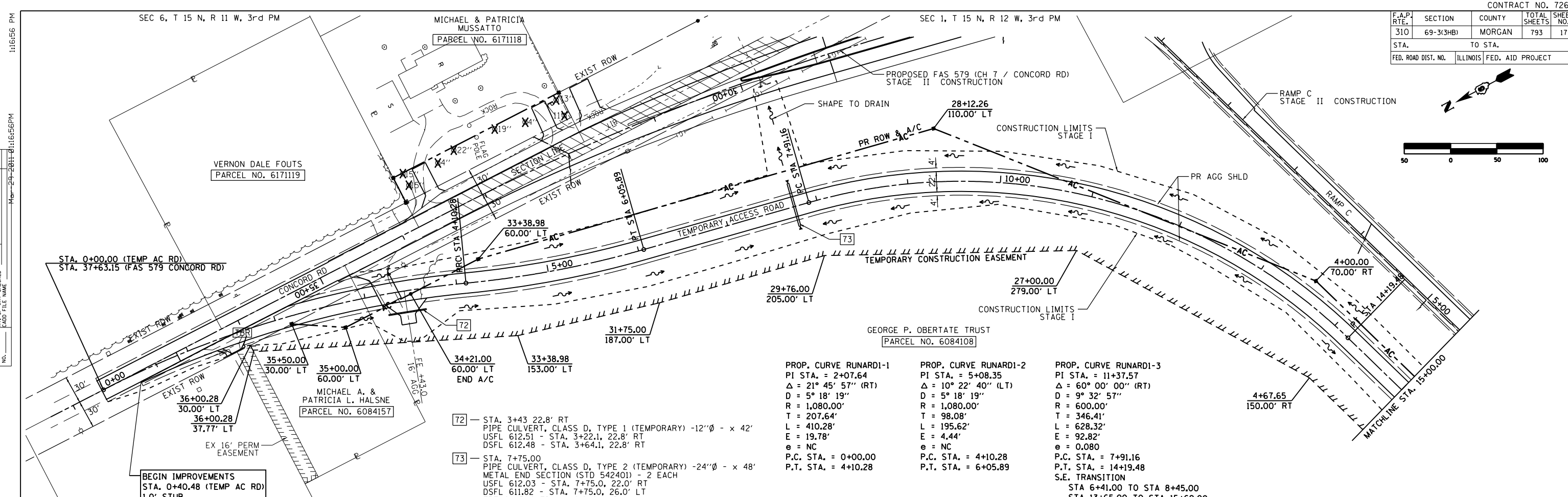
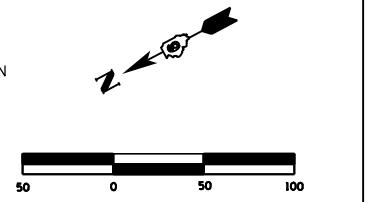
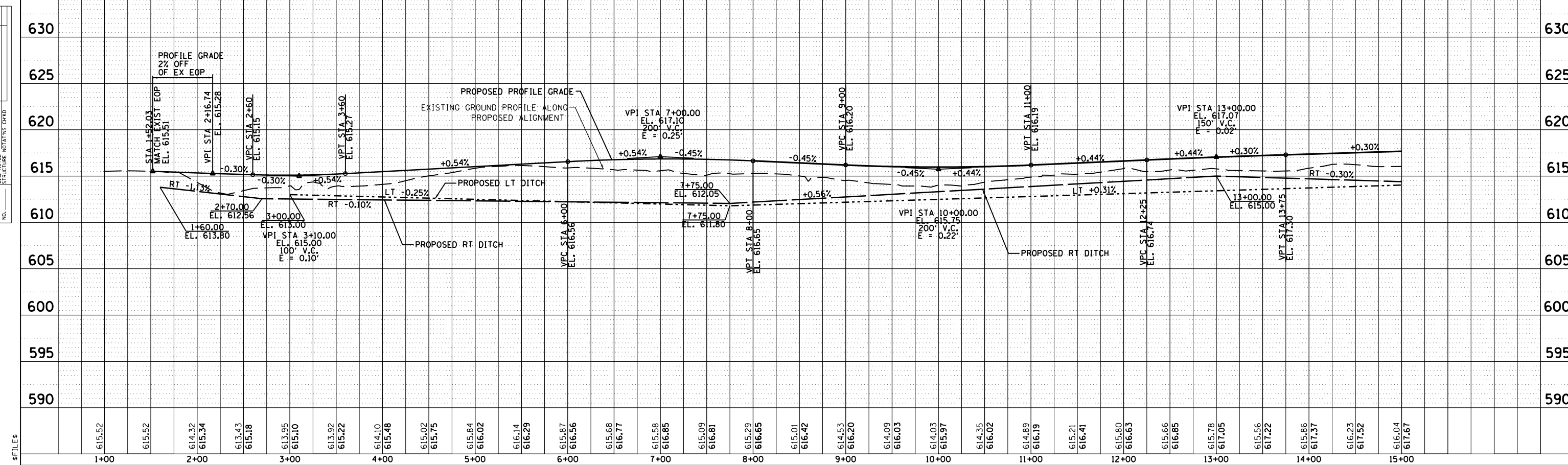


F.A.P. RTE.	SECTION	COUNTY	TOTAL SHEETS	SHEET NO.
310	69-3(3HB)	MORGAN	793	171
STA.		TO STA.		
FED. ROAD DIST. NO.		ILLINOIS FED. AID PROJECT		



PROP. CURVE RUNARD1-1	PROP. CURVE RUNARD1-2	PROP. CURVE RUNARD1-3
PI STA. = 2+07.64	PI STA. = 5+08.35	PI STA. = 11+37.57
$\Delta = 21^\circ 45' 57''$ (RT)	$\Delta = 10^\circ 22' 40''$ (LT)	$\Delta = 60^\circ 00' 00''$ (RT)
$D = 5^\circ 18' 19''$	$D = 5^\circ 18' 19''$	$D = 9^\circ 32' 57''$
$R = 1,080.00'$	$R = 1,080.00'$	$R = 600.00'$
$T = 207.64'$	$T = 98.08'$	$T = 346.41'$
$L = 410.28'$	$L = 195.62'$	$L = 628.32'$
$E = 19.78'$	$E = 4.44'$	$E = 92.82'$
$e = NC$	$e = NC$	$e = 0.080$
P.C. STA. = 0+00.00	P.C. STA. = 4+10.28	P.C. STA. = 7+91.16
P.T. STA. = 4+10.28	P.T. STA. = 6+05.89	P.T. STA. = 14+19.48
		S.E. TRANSITION
		STA 6+41.00 TO STA 8+45.00
		STA 13+65.00 TO STA 15+69.00

- 72 - STA. 3+43.22.8' RT
PIPE CULVERT, CLASS D, TYPE 1 (TEMPORARY) -12"Ø - x 42'
USFL 612.51 - STA. 3+22.1, 22.8' RT
DSFL 612.48 - STA. 3+64.1, 22.8' RT
- 73 - STA. 7+75.00
PIPE CULVERT, CLASS D, TYPE 2 (TEMPORARY) -24"Ø - x 48'
METAL END SECTION (STD 542401) - 2 EACH
USFL 612.03 - STA. 7+75.0, 22.0' RT
DSFL 611.82 - STA. 7+75.0, 26.0' LT
TRENCH BACKFILL = 6.2 CU YD



PLAN	DATE
SURVEYED	
PLOTTED	
CHECKED	
BY	
NO.	

PROFILE	DATE
SURVEYED	
PLOTTED	
CHECKED	
BY	
NO.	