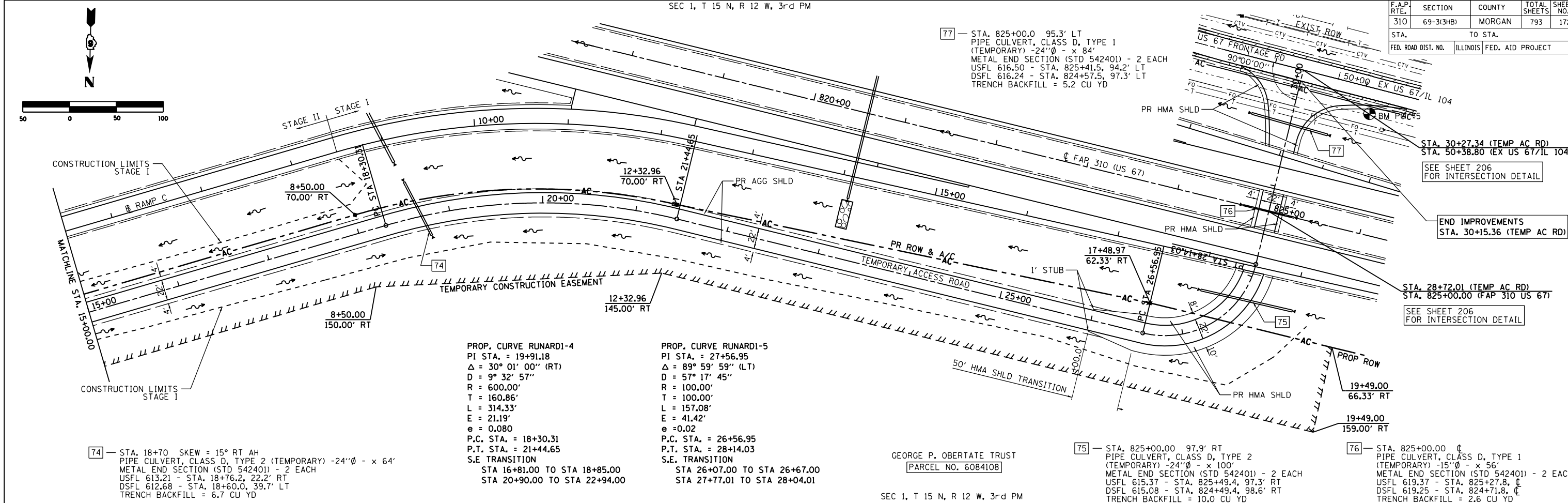


F.A.P. RTE.	SECTION	COUNTY	TOTAL SHEETS	SHEET NO.
310	69-3(3HB)	MORGAN	793	172
STA. 69-3(3HB)		TO STA.		
FED. ROAD DIST. NO.		ILLINOIS FED. AID PROJECT		

SEC 1, T 15 N, R 12 W, 3rd PM

1:16:57 PM
 PLAN SURVEYED BY DATE
 PLOTTED BY
 CHECKED BY
 NOTE BOOK NO.
 DATE FILED
 PROFILE SURVEYED BY DATE
 PLOTTED BY
 CHECKED BY
 NOTE BOOK NO.
 DATE FILED

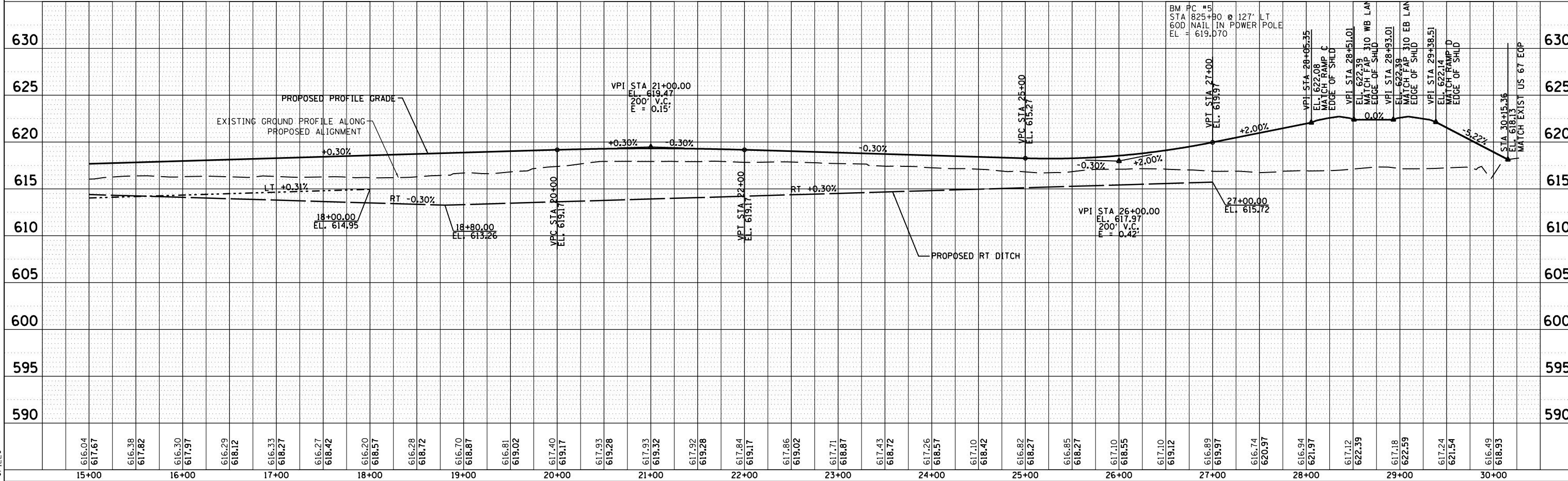


PROP. CURVE RUNARD1-4
 PI STA. = 19+91.18
 $\Delta = 30^\circ 01' 00''$ (RT)
 $D = 9^\circ 32' 57''$
 $R = 600.00'$
 $T = 160.86'$
 $L = 314.33'$
 $E = 21.19'$
 $e = 0.080$
 P.C. STA. = 18+30.31
 P.T. STA. = 21+44.65
 S.E. TRANSITION
 STA 16+81.00 TO STA 18+85.00
 STA 20+90.00 TO STA 22+94.00

PROP. CURVE RUNARD1-5
 PI STA. = 27+56.95
 $\Delta = 89^\circ 59' 59''$ (LT)
 $D = 57^\circ 17' 45''$
 $R = 100.00'$
 $T = 100.00'$
 $L = 157.08'$
 $E = 41.42'$
 $e = 0.02$
 P.C. STA. = 26+56.95
 P.T. STA. = 28+14.03
 S.E. TRANSITION
 STA 26+07.00 TO STA 26+67.00
 STA 27+77.01 TO STA 28+04.01

GEORGE P. OBERTATE TRUST
 PARCEL NO. 6084108

SEC 1, T 15 N, R 12 W, 3rd PM



SECTION 69-3(3HB)

MORGAN COUNTY