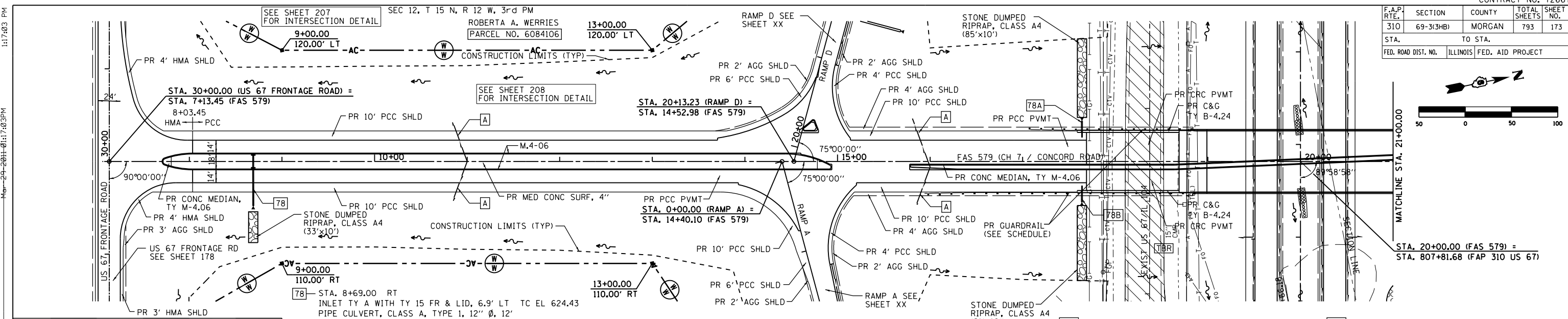
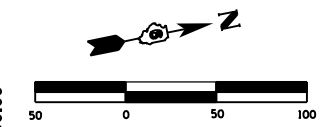


F.A.P. RTE.	SECTION	COUNTY	TOTAL SHEETS	SHEET NO.
310	69-3(3HB)	MORGAN	793	173
STA.		TO STA.		
FED. ROAD DIST. NO.		ILLINOIS FED. AID PROJECT		



78 - STA. 8+69.00 RT
 INLET TY A WITH TY 15 FR & LID, 6.9' LT TC EL 624.43
 PIPE CULVERT, CLASS A, TYPE 1, 12" Ø, 12'
 USFL STA. 8+69.0, 5.9' LT, EL 621.59 DSFL STA. 8+69.0, 5.9' RT, EL 621.09
 INLET TY A WITH TY 15 FR & LID, 6.9' RT TC EL 624.43
 PIPE CULVERT, CLASS A, TYPE 1, 12" Ø, 40'
 USFL STA. 8+69.0, 7.9' RT, EL 619.59
 DSFL STA. 8+69.0, 47.9' RT, EL 619.19
 PRECAST REINF CONC END SECTION 12"Ø, STD (542301) 1 EACH
 TRENCH BACKFILL = 5.2 CU YD

ROBERTA A. WERRIES
 PARCEL NO. 6084106
 SEC 12, T 15 N, R 12 W, 3rd PM

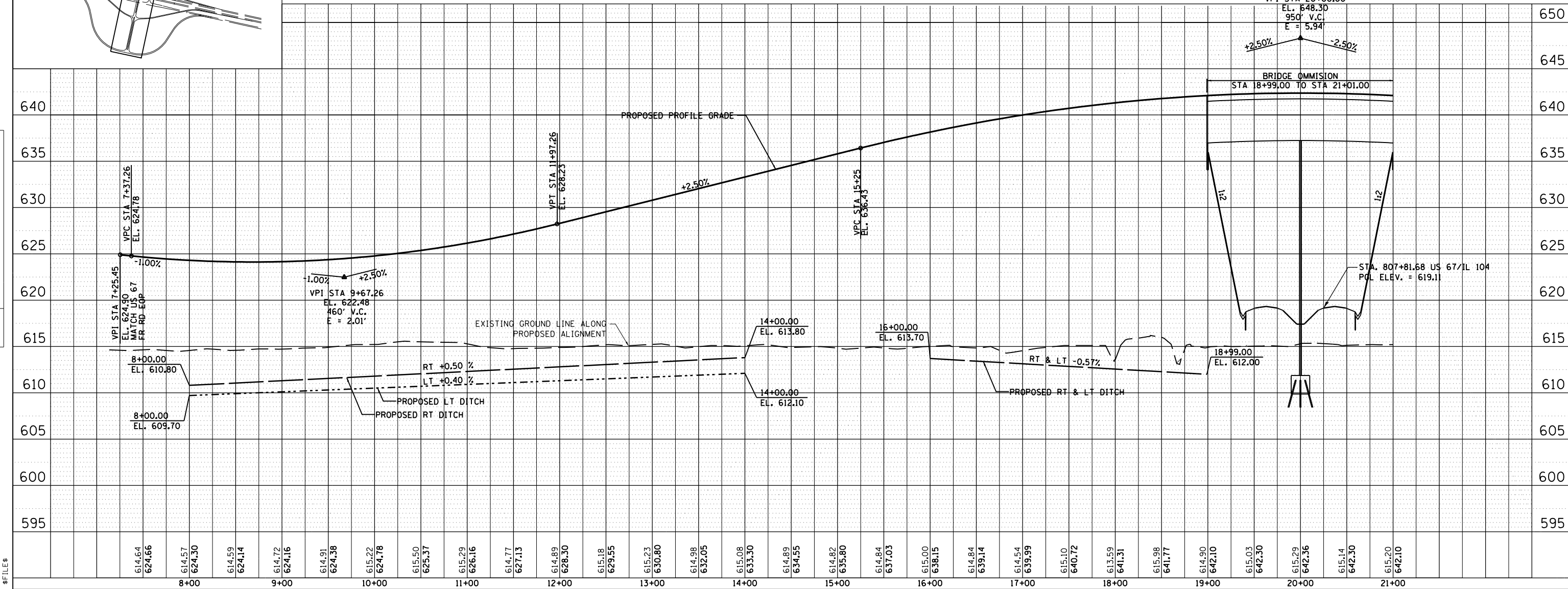
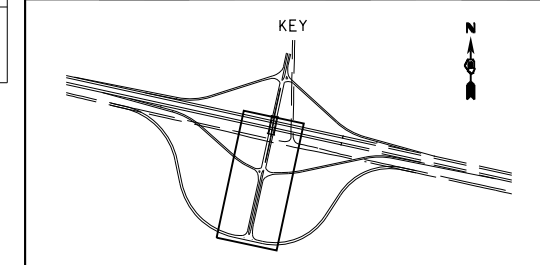
A - TRANSVERSE DRAINS, COMPLETE
 (SEE DETAIL)

78A - STA. 17+64.00 LT
 TYPE F INLET BOX (STD 610001) - 1 EACH
 PIPE DRAIN 12"Ø, 12'
 METAL END SECTION (STD 542401) - 1 EACH
 USFL STA. 17+64.0, 31.8' LT, EL 637.84
 DSFL STA. 17+64.0, 43.8' LT, EL 637.60

78B - STA. 17+64.00 RT
 TYPE F INLET BOX (STD 610001) - 1 EACH
 PIPE DRAIN 12"Ø, 12'
 METAL END SECTION (STD 542401) - 1 EACH
 USFL STA. 17+64.0, 31.8' RT, EL 637.84
 DSFL STA. 17+64.0, 43.8' RT, EL 637.60

DATE	BY	REVISION

DATE	BY	REVISION



614.64	614.57	614.59	614.72	614.91	615.22	615.50	615.29	614.77	614.89	615.18	615.23	614.98	615.08	614.89	614.82	614.84	615.00	614.84	614.54	615.10	613.59	615.98	614.90	615.03	615.29	615.14	615.20
624.66	624.30	624.14	624.16	624.38	624.78	625.37	626.16	627.13	628.30	629.55	630.80	632.05	633.30	634.55	635.80	637.03	638.15	639.14	639.99	640.72	641.31	641.77	642.10	642.30	642.36	642.30	642.10
8+00	8+00	9+00	9+00	10+00	10+00	11+00	11+00	12+00	12+00	13+00	13+00	14+00	14+00	15+00	15+00	16+00	16+00	17+00	17+00	18+00	18+00	19+00	19+00	20+00	20+00	21+00	21+00